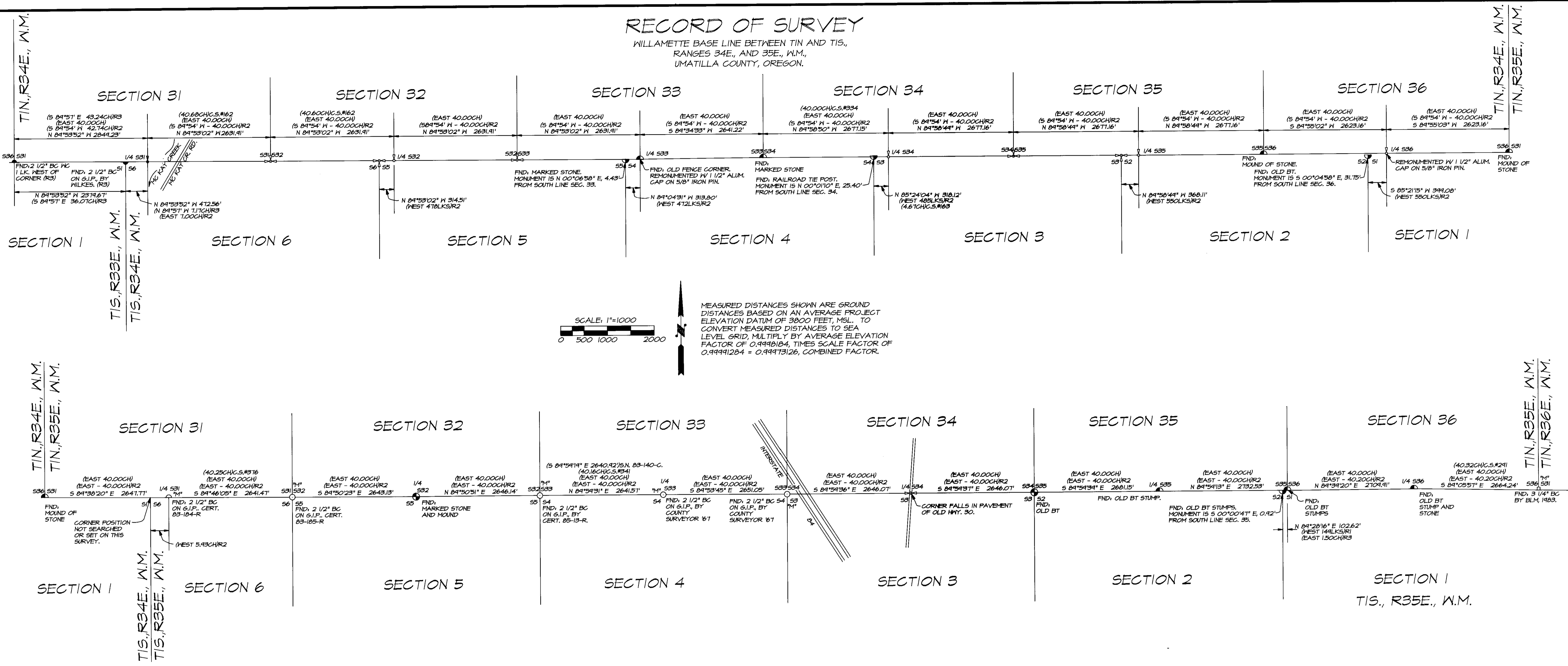
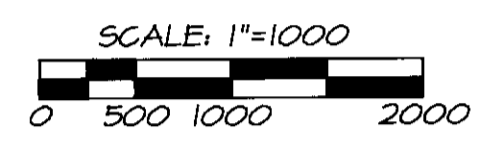


RECORD OF SURVEY

WILLAMETTE BASE LINE BETWEEN T1N AND T1S,
RANGES 34E., AND 35E., W.M.,
UMATILLA COUNTY, OREGON.



MEASURED DISTANCES SHOWN ARE GROUND DISTANCES BASED ON AN AVERAGE PROJECT ELEVATION DATUM OF 3800 FEET, MSL. TO CONVERT MEASURED DISTANCES TO SEA LEVEL GRID, MULTIPLY BY AVERAGE ELEVATION FACTOR OF 0.99991284, TIMES SCALE FACTOR OF 0.99991284 = 0.99982568, COMBINED FACTOR.



LEGEND

- RE-ESTABLISHED CORNER AND REMONUMENTED WITH A 2 1/2" BRASS CAP ON A 1 1/4" X 30" GALVANIZED IRON PIPE, UNLESS OTHERWISE NOTED. SEE CORNER RECORD FILED SEPARATELY.
- FOUND CORNER MONUMENT AS NOTED.
- FOUND CORNER MONUMENT AND REMONUMENTED WITH A 2 1/2" BRASS CAP ON A 1 1/4" X 30" GALVANIZED IRON PIPE, UNLESS OTHERWISE NOTED. SEE CORNER RECORD FILED SEPARATELY.
- THE LETTER "M" BESIDE A CORNER MONUMENT SYMBOL INDICATES THE CORNER MONUMENT WAS MAINTAINED DURING THIS SURVEY. SEE CORNER RECORD FILED SEPARATELY.
- FOUND 2 1/2" BRASS CAP ON A 2" G.I.P. FROM GLO SURVEY BY L. E. WILKES, IN 1917.
- FOUND 3 1/4" BLM BRASS CAP ON 2 1/2" GALVANIZED IRON PIPE FROM 1983 REMONUMENTATION BY BLM.
- G.I.P. INDICATES GALVANIZED IRON PIPE.
- RECORD FROM GLO CONTRACT NO. 102, BY TIMOTHY W. DAVENPORT, DATED JULY 20, 1863.
- RECORD FROM GLO CONTRACT NO. 451, BY RUFUS S. MOORE, DATED JUNE 12, 1882.
- RECORD FROM SPECIAL GLO CONTRACT, BY JAMES P. CURRIN & JAMES E. NOLAND, DATED MAY 4, 1887.
- RECORD FROM GLO SURVEY BY L.E. WILKES, DATED FEBRUARY 20, 1917.
- INDICATES COUNTY SURVEY RECORD FROM "RECORD OF PRIVATE SURVEYS", BOOKS 1 & 2.
- INDICATES RECORD MEASUREMENT, COUNTY SURVEY NUMBER (S.N.), INDICATED.

NARRATIVE OF SURVEY

THE PURPOSE OF THIS SURVEY WAS TO RECOVER, RE-ESTABLISH, REMONUMENT, OR MAINTAIN CERTAIN SECTION AND 1/4 SECTION CORNERS ALONG THE WILLAMETTE BASE LINE, IN RANGES 34 AND 35 EAST, THE SURVEY WORK WAS AUTHORIZED BY UMATILLA COUNTY BOARD OF COMMISSIONERS, AND FUNDED BY THE PUBLIC LAND CORNER MONUMENTATION FUND.

INFORMATION RECORDED IN THE COUNTY SURVEYOR'S OFFICE FOR THIS SURVEY INCLUDES THIS RECORD OF SURVEY AND LAND CORNER RECORDS FOR CORNERS REMONUMENTED OR MAINTAINED TO CURRENT COUNTY STANDARDS.

HORIZONTAL CONTROL FOR THIS PROJECT WAS FIXED BY GLOBAL POSITIONING SYSTEM OBSERVATIONS ON SEVERAL STATIONS ALONG THE PROJECT BASE LINE. THE GPS OBSERVATIONS WERE MADE AS PART OF A LARGER CONTROL SURVEY AND WERE CONSTRAINED TO HIGH PRECISION STATIONS "BIG HILL RESET", "FORE" AND "GOVE". A GROUND SURVEY TRAVERSE WAS RUN BETWEEN EACH GPS CONTROL STATION AND GROUND SURVEY OBSERVATIONS WERE ADJUSTED TO GPS STATION POSITIONS BY LEAST SQUARES METHODS.

GROUND SURVEY TRAVERSE MEASUREMENTS WERE MADE WITH A LIETZ SET 3 B ONE SECOND AUTOMATIC TOTAL STATION. GPS OBSERVATIONS WERE MADE WITH 3 ASHTECH P-12 DUAL FREQUENCY RECEIVERS WITH FIXED HEIGHT ANTENNA TRIPODS. GPS DATA WAS PROCESSED AND ADJUSTED BY LEAST SQUARES METHODS ON ASHTECH FILLNET PROCESSING SOFTWARE.

BEARINGS REPORTED ON THIS RECORD OF SURVEY ARE GEODETIC BASED ON THE CONVERGENCE ANGLE OF +01°25'13", APPLIED AT THE SOUTHWEST CORNER OF SECTION 31, T1N, R35E., W.M., PRIOR TO ADJUSTMENTS OF GROUND TRAVERSES OBSERVED BY TOTAL STATION. GPS STATION POSITIONS WERE CONVERTED TO AN AVERAGE GROUND DATUM OF 3800 FEET MSL. STATE PLANE CO-ORDINATES REPORTED FOR EACH CORNER ON THE LAND CORNER RECORD FORMS ARE BASED ON AN AVERAGE PROJECT DATUM OF 3800 FEET MSL AND GRID FACTOR OF 0.99991284.

HISTORY OF SURVEYS

SURVEYS IN TOWNSHIP 1 NORTH, RANGES 34 AND 35 EAST OF THE WILLAMETTE MERIDIAN, BEGAN IN 1863 WITH THE SURVEY OF THE WILLAMETTE BASE LINE, BY TIMOTHY W. DAVENPORT. IN 1887, JAMES P. CURRIN AND JAMES E. NOLAND RESURVEYED THE BASE LINE THROUGH TOWNSHIP 1 NORTH, RANGE 34 EAST, AND RETRACED THE BASE LINE THROUGH TOWNSHIP 1 NORTH, RANGE 35 EAST. RUFUS S. MOORE SUBDIVIDED PORTIONS OF TOWNSHIP 1 SOUTH, RANGE 35 EAST, IN 1882. CURRIN AND NOLAND ALSO SUBDIVIDED PORTIONS OF TOWNSHIP 1 SOUTH, RANGE 34 EAST, AND TOWNSHIP 1 SOUTH, RANGE 35 EAST, IN 1887. IN 1917, L.E. WILKES RETRACED PORTIONS OF TOWNSHIP 1 SOUTH, RANGE 34 EAST, AND TOWNSHIP 1 NORTH, RANGE 34 EAST, WHILE SURVEYING THE DIMINISHED RESERVATION BOUNDARY.

LAND CORNER RECORD FORMS:

THE LAND CORNER RECORD FORMS, FILED SEPARATELY, CONTAIN EXPLANATIONS, HISTORIES, AND METHODS OF RE-ESTABLISHMENT, REMONUMENTATION, AND MAINTENANCE FOR CORNERS VISITED ON THIS SURVEY. STATE PLANE CO-ORDINATE VALUES ARE ALSO REPORTED. LAND CORNER RECORD FORMS SHOULD BE CONSULTED FOR SPECIFIC INFORMATION ON EACH CORNER.

RECORDED BY
Umatilla County Surveyor
Date: 2-95
Book: 11
No. 95-16-C

REGISTERED PROFESSIONAL LAND SURVEYOR <i>William R. Wells</i> OREGON JULY 22, 1977 WILLIAM R. WELLS 1108 RENEWS 6/30/96	WILLIAM R. WELLS, PLS 357 N.E. HWY. 11 P.O. BOX 1696 PENDLETON, OR 97801 PHONE: (503) 276-6362 DATE: NOV. 94 DR. BY: RDE/DT CK. BY: MFW No: 94-218	PROJECT: PUBLIC LAND CORNER REMONUMENTATION FOR UMATILLA COUNTY TOWNSHIPS 1 NORTH AND 1 SOUTH, RANGES 34 EAST AND 35 EAST, W.M., UMATILLA COUNTY.
---	--	--