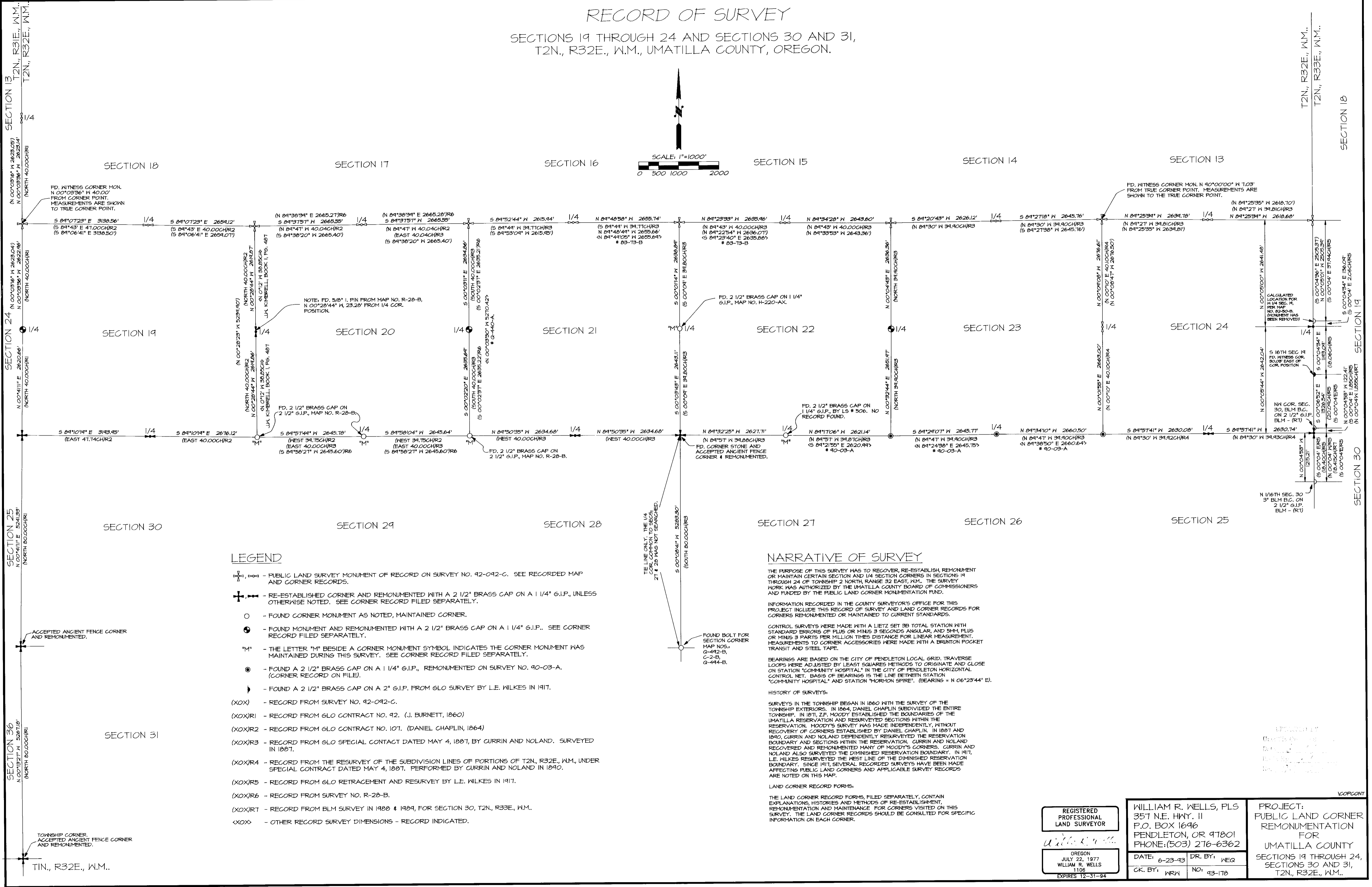
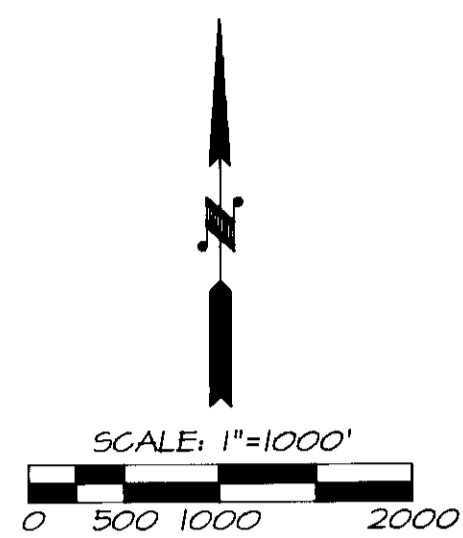


RECORD OF SURVEY

SECTIONS 19 THROUGH 24 AND SECTIONS 30 AND 31,
T2N., R32E., W.M., UMATILLA COUNTY, OREGON.



LEGEND

- ⊕ - PUBLIC LAND SURVEY MONUMENT OF RECORD ON SURVEY NO. 92-092-G. SEE RECORDED MAP AND CORNER RECORDS.
- ⊕ - RE-ESTABLISHED CORNER AND REMONUMENTED WITH A 2 1/2" BRASS CAP ON A 1 1/4" G.I.P., UNLESS OTHERWISE NOTED. SEE CORNER RECORD FILED SEPARATELY.
- - FOUND CORNER MONUMENT AS NOTED, MAINTAINED CORNER.
- ⊕ - FOUND MONUMENT AND REMONUMENTED WITH A 2 1/2" BRASS CAP ON A 1 1/4" G.I.P.. SEE CORNER RECORD FILED SEPARATELY.
- "M" - THE LETTER "M" BESIDE A CORNER MONUMENT SYMBOL INDICATES THE CORNER MONUMENT WAS MAINTAINED DURING THIS SURVEY. SEE CORNER RECORD FILED SEPARATELY.
- ⊕ - FOUND A 2 1/2" BRASS CAP ON A 1 1/4" G.I.P., REMONUMENTED ON SURVEY NO. 90-03-A. (CORNER RECORD ON FILE).
- ⊕ - FOUND A 2 1/2" BRASS CAP ON A 2" G.I.P. FROM GLO SURVEY BY L.E. WILKES IN 1917.
- (XOX) - RECORD FROM SURVEY NO. 92-092-G.
- (XOX)R1 - RECORD FROM GLO CONTRACT NO. 92. (J. BURNETT, 1860)
- (XOX)R2 - RECORD FROM GLO CONTRACT NO. 107. (DANIEL CHAPLIN, 1864)
- (XOX)R3 - RECORD FROM GLO SPECIAL CONTACT DATED MAY 4, 1887, BY CURRIN AND NOLAND. SURVEYED IN 1887.
- (XOX)R4 - RECORD FROM THE RESURVEY OF THE SUBDIVISION LINES OF PORTIONS OF T2N., R32E., W.M., UNDER SPECIAL CONTRACT DATED MAY 4, 1887. PERFORMED BY CURRIN AND NOLAND IN 1890.
- (XOX)R5 - RECORD FROM GLO RETRACEMENT AND RESURVEY BY L.E. WILKES IN 1917.
- (XOX)R6 - RECORD FROM SURVEY NO. R-28-B.
- (XOX)R7 - RECORD FROM BLM SURVEY IN 1988 & 1989, FOR SECTION 30, T2N., R32E., W.M..
- XXX - OTHER RECORD SURVEY DIMENSIONS - RECORD INDICATED.

NARRATIVE OF SURVEY

THE PURPOSE OF THIS SURVEY WAS TO RECOVER, RE-ESTABLISH, REMONUMENT OR MAINTAIN CERTAIN SECTION AND 1/4 SECTION CORNERS IN SECTIONS 19 THROUGH 24 OF TOWNSHIP 2 NORTH, RANGE 32 EAST, W.M.. THE SURVEY WORK WAS AUTHORIZED BY THE UMATILLA COUNTY BOARD OF COMMISSIONERS AND FUNDED BY THE PUBLIC LAND CORNER MONUMENTATION FUND.

INFORMATION RECORDED IN THE COUNTY SURVEYOR'S OFFICE FOR THIS PROJECT INCLUDE THIS RECORD OF SURVEY AND LAND CORNER RECORDS FOR CORNERS REMONUMENTED OR MAINTAINED TO CURRENT STANDARDS.

CONTROL SURVEYS WERE MADE WITH A LIETZ SET 3B TOTAL STATION WITH STANDARD ERRORS OF PLUS OR MINUS 3 SECONDS ANGULAR, AND 5MM, PLUS OR MINUS 3 PARTS PER MILLION TIMES DISTANCE FOR LINEAR MEASUREMENT. MEASUREMENTS TO CORNER ACCESSORIES WERE MADE WITH A BRUNTON POCKET TRANSIT AND STEEL TAPE.

BEARINGS ARE BASED ON THE CITY OF PENDLETON LOCAL GRID. TRAVERSE LOOPS WERE ADJUSTED BY LEAST SQUARES METHODS TO ORIGINATE AND CLOSE ON STATION "COMMUNITY HOSPITAL" IN THE CITY OF PENDLETON HORIZONTAL CONTROL NET. BASIS OF BEARINGS IS THE LINE BETWEEN STATION "COMMUNITY HOSPITAL" AND STATION "MORMON SPIRE". (BEARINGS = N 06°23'44" E).

HISTORY OF SURVEYS:

SURVEYS IN THE TOWNSHIP BEGAN IN 1860 WITH THE SURVEY OF THE TOWNSHIP EXTERIORS. IN 1864, DANIEL CHAPLIN SUBDIVIDED THE ENTIRE TOWNSHIP. IN 1871, Z.F. MOODY ESTABLISHED THE BOUNDARIES OF THE UMATILLA RESERVATION AND RESURVEYED SECTIONS WITHIN THE RESERVATION. MOODY'S SURVEY WAS MADE INDEPENDENTLY, WITHOUT RECOVERY OF CORNERS ESTABLISHED BY DANIEL CHAPLIN. IN 1887 AND 1890, CURRIN AND NOLAND DEPENDENTLY RESURVEYED THE RESERVATION BOUNDARY AND SECTIONS WITHIN THE RESERVATION. CURRIN AND NOLAND RECOVERED AND REMONUMENTED MANY OF MOODY'S CORNERS. CURRIN AND NOLAND ALSO SURVEYED THE DIMINISHED RESERVATION BOUNDARY. IN 1917, L.E. WILKES RESURVEYED THE WEST LINE OF THE DIMINISHED RESERVATION BOUNDARY. SINCE 1917, SEVERAL RECORDED SURVEYS HAVE BEEN MADE AFFECTING PUBLIC LAND CORNERS AND APPLICABLE SURVEY RECORDS ARE NOTED ON THIS MAP.

LAND CORNER RECORD FORMS:

THE LAND CORNER RECORD FORMS, FILED SEPARATELY, CONTAIN EXPLANATIONS, HISTORIES AND METHODS OF RE-ESTABLISHMENT, REMONUMENTATION AND MAINTENANCE FOR CORNERS VISITED ON THIS SURVEY. THE LAND CORNER RECORDS SHOULD BE CONSULTED FOR SPECIFIC INFORMATION ON EACH CORNER.

REGISTERED
PROFESSIONAL
LAND SURVEYOR

William R. Wells

OREGON
JULY 22, 1977
WILLIAM R. WELLS
1108
EXPIRES 12-31-94

WILLIAM R. WELLS, PLS
357 N.E. HWY. 11
P.O. BOX 1696
PENDLETON, OR 97801
PHONE: (503) 276-6362

DATE: 6-23-93 DR. BY: WEG
CK. BY: MFK NO: 93-178

PROJECT:
PUBLIC LAND CORNER
REMONUMENTATION
FOR
UMATILLA COUNTY

SECTIONS 19 THROUGH 24,
SECTIONS 30 AND 31,
T2N., R32E., W.M..

VCOPCONT