

**NARRATIVE OF SURVEY**

THE PURPOSE OF THIS SURVEY WAS TO MONUMENT PORTIONS OF THE BOUNDARIES OF FOUR PARCELS OF LAND WHICH WILL BE REDEFINED FROM FOUR EXISTING TAX LOTS. THE "BOUNDARY LINE ADJUSTMENTS", DESCRIPTIONS AND MAP ARE TO BE SUBMITTED TO THE UMATILLA COUNTY PLANNING DEPARTMENT FOR APPROVAL.

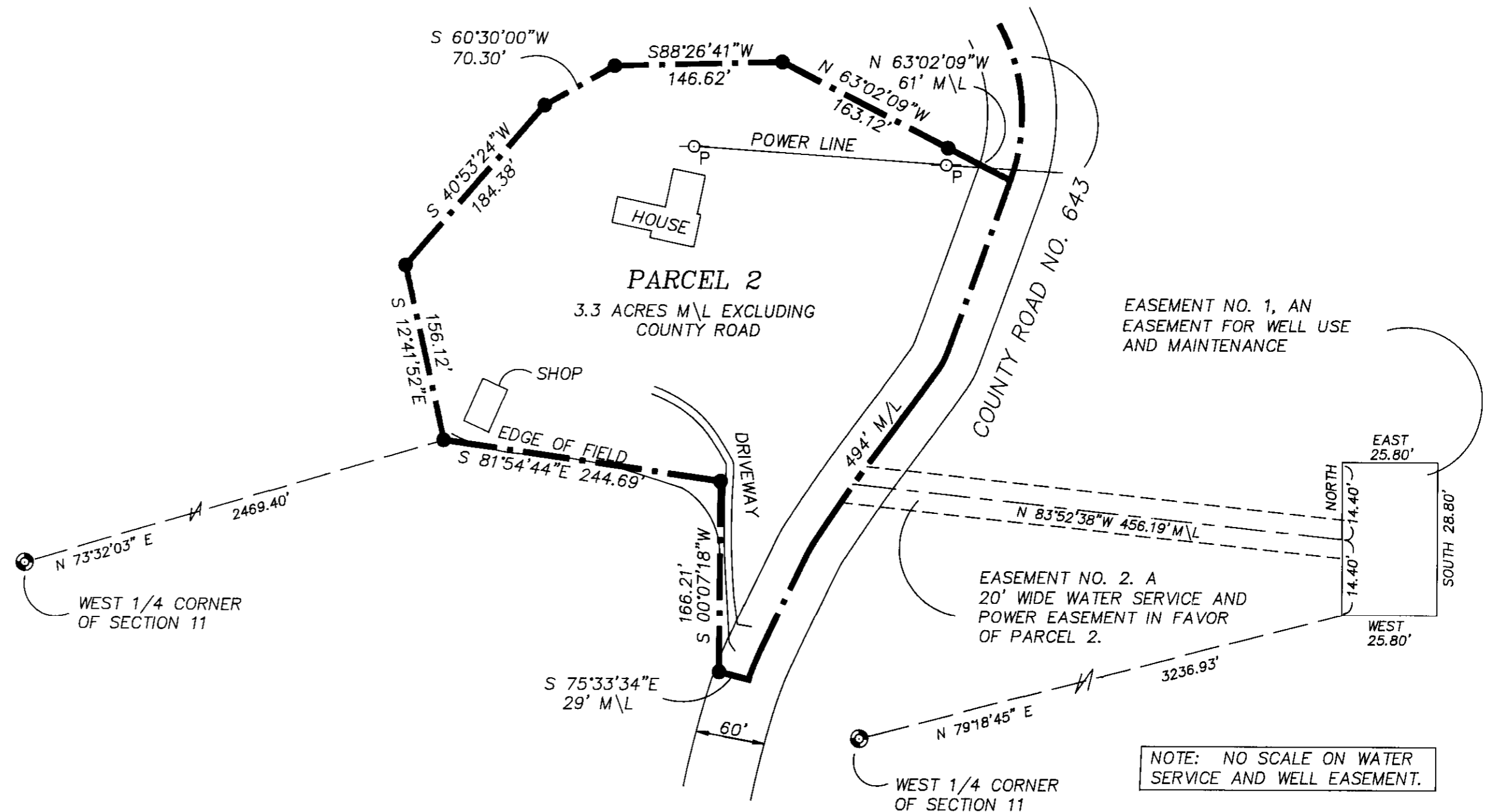
SECTION LINES AND BREAKDOWN LINES WITHIN SECTIONS 10 AND 11 WERE NOT RETRACED AND REMONUMENTED ON THIS SURVEY. THEREFORE, CALLS TO SECTION AND SECTION BREAKDOWN LINES ARE GIVEN IN A "MORE OR LESS" MANNER. STATE HIGHWAY MAP TIES TO THE WEST 1/4 CORNER OF SECTION 11 WERE USED TO REESTABLISH AND REMONUMENT THIS CORNER. THE REDEFINED PARCELS ARE TIED TO THIS REMONUMENTED CORNER.

SUFFICIENT MONUMENTATION OF THE RIGHT-OF-WAY OF STATE HIGHWAY 30 WAS FOUND TO ESTABLISH RIGHT-OF-WAY LOCATIONS THROUGHOUT THE SURVEYED AREA. MANY OF THE STATE HIGHWAY MONUMENTS HAVE BEEN DESTROYED BY FARMING OPERATIONS, AND SEVERAL CONCRETE MONUMENTS WERE FOUND LOOSE IN WORKED FIELDS.

THE THREE 1/2 INCH IRON PINS FOUND ON THE SOUTHWEST PORTION OF THE PROPERTY APPEAR TO HAVE BEEN ESTABLISHED BY A SURVEYOR BECAUSE OF THERE RELATIONSHIP TO A PORTION OF THE DEED DESCRIPTION. THE SAME SURVEYOR MUST HAVE WRITTEN PORTIONS OF THE DEED DESCRIPTION. ALTHOUGH NO RECORD WAS FOUND FOR THE PINS IN THE COUNTY SURVEYOR'S OFFICE, I ACCEPTED THE OBSERVED LOCATION OF THESE PINS AND INCORPORATED THEM INTO THE PRESENT SURVEY. I DO NOTE THAT THE PERSON ESTABLISHING THESE PINS AND PREPARING PORTIONS OF THE DEED DESCRIPTION ROTATED THE THETA ANGLE BETWEEN TRUE AND GRID NORTH IN THE WRONG DIRECTION, RESULTING IN DEED BEARINGS IN THIS AREA BEING APPROXIMATELY 3 DEGREES OUT OF ALIGNMENT WITH TRUE NORTH.

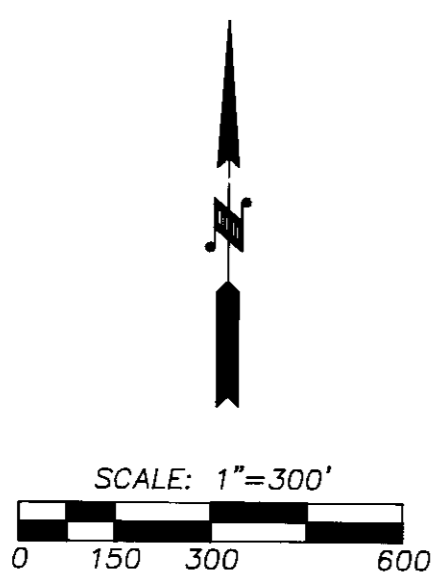
THE PRESENT SURVEY WAS MADE WITH A TWO PERSON CREW USING A LIETZ 1 SECOND AUTOMATIC TOTAL STATION. BASIS OF BEARINGS IS A SOLAR OBSERVATION AS NOTED ON THIS PLAT.

NOTE: THAT PORTION OF THE NORTHEAST 1/4 OF SECTION 10 LOCATED EAST OF THE EASTERLY RIGHT-OF-WAY LINE OF STATE HIGHWAY NO. 11 HAS NOT BEEN CONVEYED TO THE WINNS BY DEED DESCRIPTION. THE WINNS ARE NOW IN THE PROCESS OF ACQUIRING THESE LANDS.



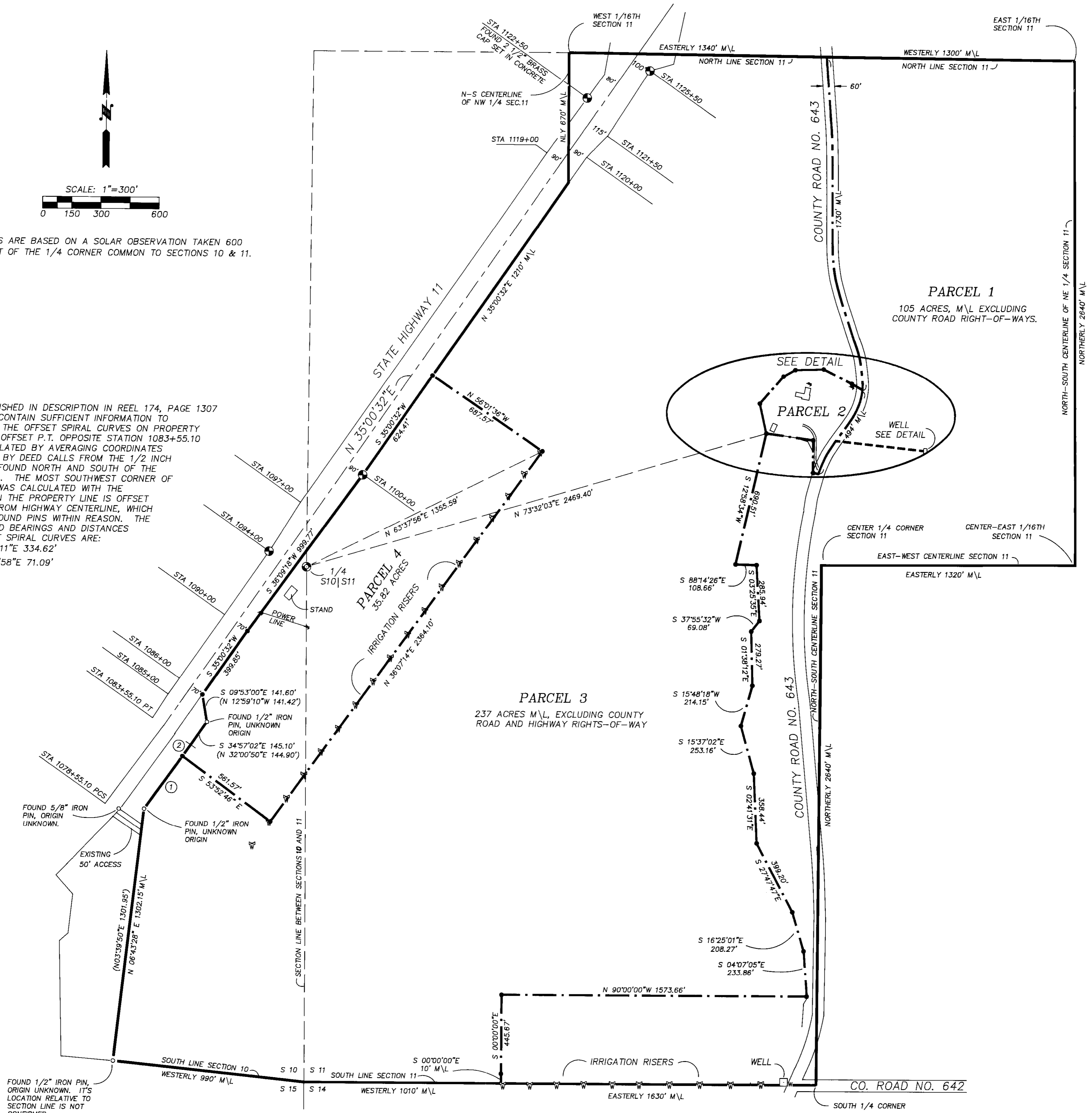
**DETAIL OF PARCEL 2**

SCALE 1" = 100'



BEARINGS ARE BASED ON A SOLAR OBSERVATION TAKEN 600 FEET WEST OF THE 1/4 CORNER COMMON TO SECTIONS 10 & 11.

NOTE: DATA FURNISHED IN DESCRIPTION IN REEL 174, PAGE 1307 DOES NOT CONTAIN SUFFICIENT INFORMATION TO CALCULATE THE OFFSET SPIRAL CURVES ON PROPERTY LINE. THE OFFSET P.T. OPPOSITE STATION 1083+55.10 WAS CALCULATED BY AVERAGING COORDINATES GENERATED BY DEED CALLS FROM THE 1/2 INCH IRON PINS FOUND NORTH AND SOUTH OF THE OFFSET P.T.. THE MOST SOUTHWEST CORNER OF PARCEL 4 WAS CALCULATED WITH THE ASSUMPTION THE PROPERTY LINE IS OFFSET 170 FEET FROM HIGHWAY CENTERLINE, WHICH MATCHES FOUND PINS WITHIN REASON. THE LONG CHORD BEARINGS AND DISTANCES FOR OFFSET SPIRAL CURVES ARE:  
 ① N 36°01'11"E 334.62'  
 ② N 34°58'58"E 71.09'



**LEGEND**

- - SET 5/8" BY 30" IRON ROD WITH 1 1/2" YELLOW PLASTIC CAP MARKED "W.R. WELLS - PLS 1106".
- ⊙ - STATE HIGHWAY DEPARTMENT RIGHT-OF-WAY MONUMENT. FOUND 5/8" IRON PINS UNLESS OTHERWISE NOTED.
- - OTHER MONUMENTS FOUND AS NOTED.
- ⊙ - RE-ESTABLISHED POSITION OF GLO CORNER AND REMONUMENTED WITH 2 1/2" BRASS CAP ON 1 1/2" BY 30" GALV. IRON PIPE. SEE CORNER RECORD FILED SEPARATELY..
- ⊙ - EXISTING IRRIGATION RISER.
- (XOX) - RECORD FROM CORRECTION DEED RECORDED IN REEL 174, PAGE 1307, DEED RECORDS.

REGISTERED PROFESSIONAL LAND SURVEYOR  
*William R. Wells*  
 OREGON  
 JULY 22, 1977  
 WILLIAM R. WELLS  
 1106

WILLIAM R. WELLS, PLS  
 357 N.E. HWY. 11  
 P.O. BOX 1696  
 PENDLETON, ORE. 97801  
 PHONE: (503) 276-6362  
 DATE: 2/15/91 DR. BY: WJ  
 CK BY: WRW NO: 91-89

RECEIVED BY  
 Umatilla County Surveyor  
 Date: 3-9-91  
 Rec'd By: [Signature]  
 No. 91-17-C  
 PROJECT:  
 BOUNDARY LINE ADJUSTMENT  
 FOR  
 PRESTON AND ARLENE WINN  
 LOCATED IN  
 SECTIONS 10, AND 11, T4N, R35E, W.M.,  
 UMATILLA COUNTY, OREGON