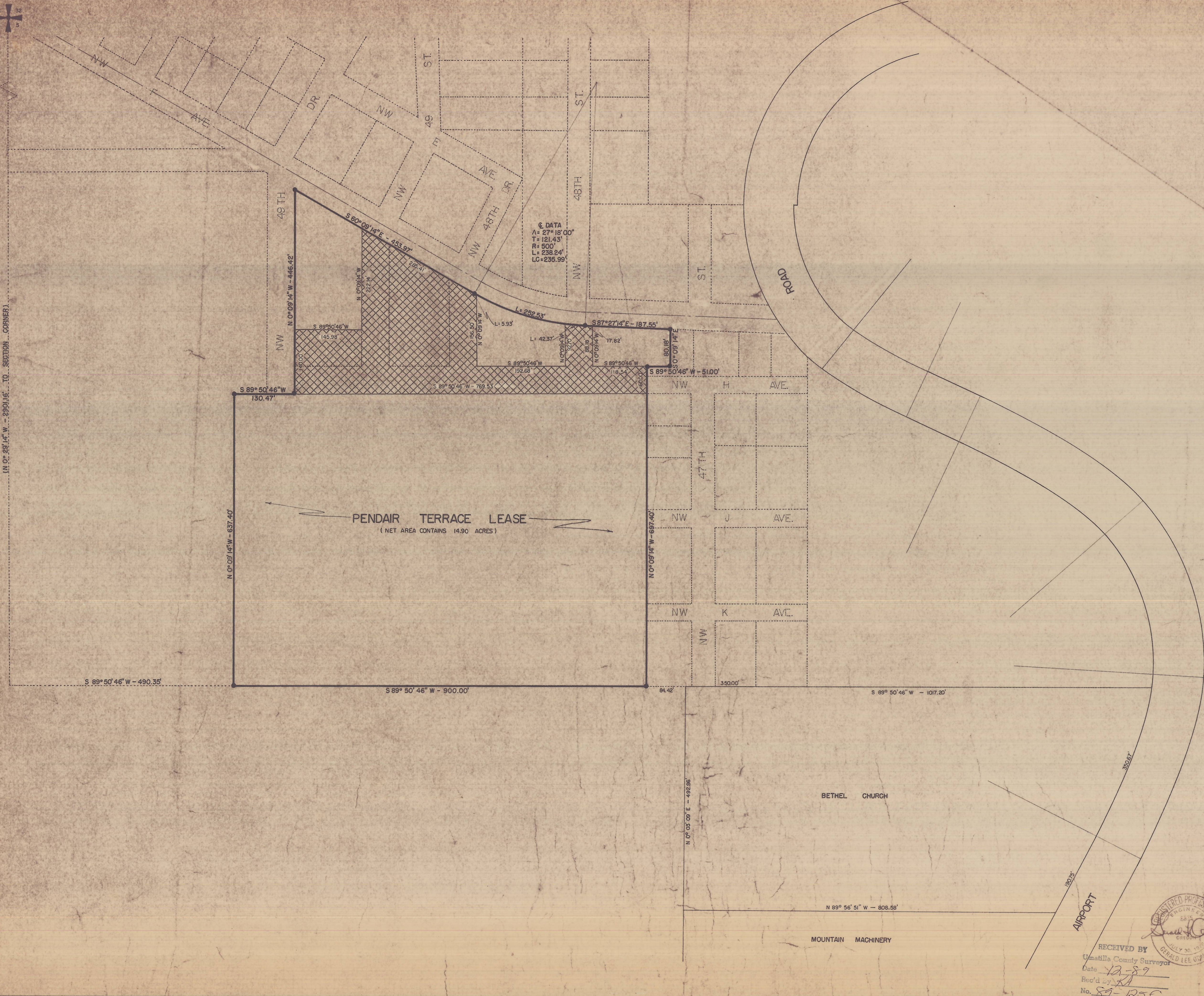


(N 0° 29' 14" W - 290.16' TO SECTION CORNER)



DATA  
A= 27° 18' 00"  
T= 121.43'  
R= 500'  
L= 238.24'  
LC= 235.99'

PENDAIR TERRACE LEASE  
(NET AREA CONTAINS 14.90 ACRES)

▲ FOUND BRASS CAP  
CENTER SECTION 5

NOTE: ALL INFORMATION SHOWN IS BASED  
ON PENDLETON LOCAL GRID.

- - SET 5/8" IRON PIN
- ▨ - AREA TO BE EXCLUDED WITHIN LEASE

BETHEL CHURCH

MOUNTAIN MACHINERY

AIRPORT



RECEIVED BY  
Umatilla County Surveyor  
Date 12-28-76  
Rec'd by [Signature]  
No. 89-125C

CITY OF PENDLETON ENGINEERING DEPT.		
PENDAIR TERRACE LEASE		
DATE: 7-14-76	SCALE: 1"=100'	SHEET OF 1
DN: FLY	CKD: DLS	

24-7752