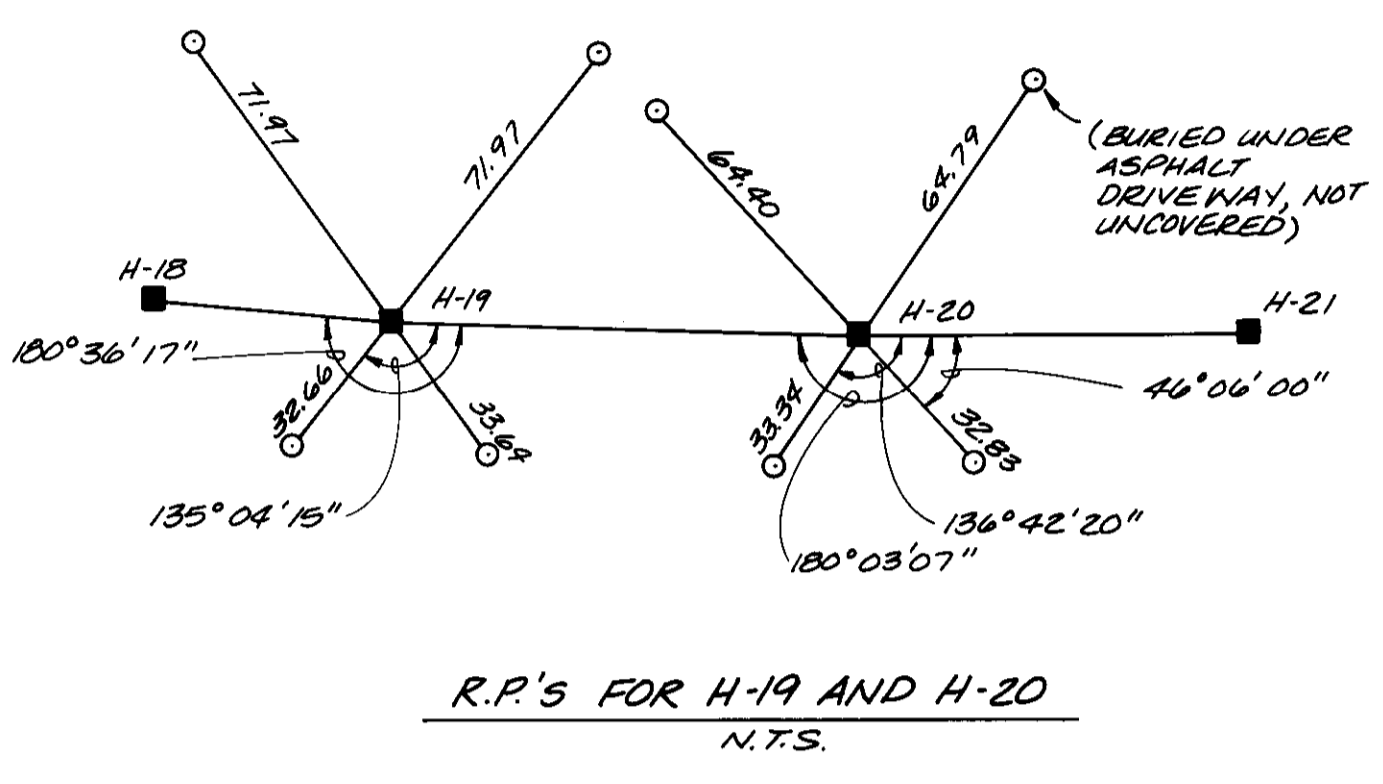
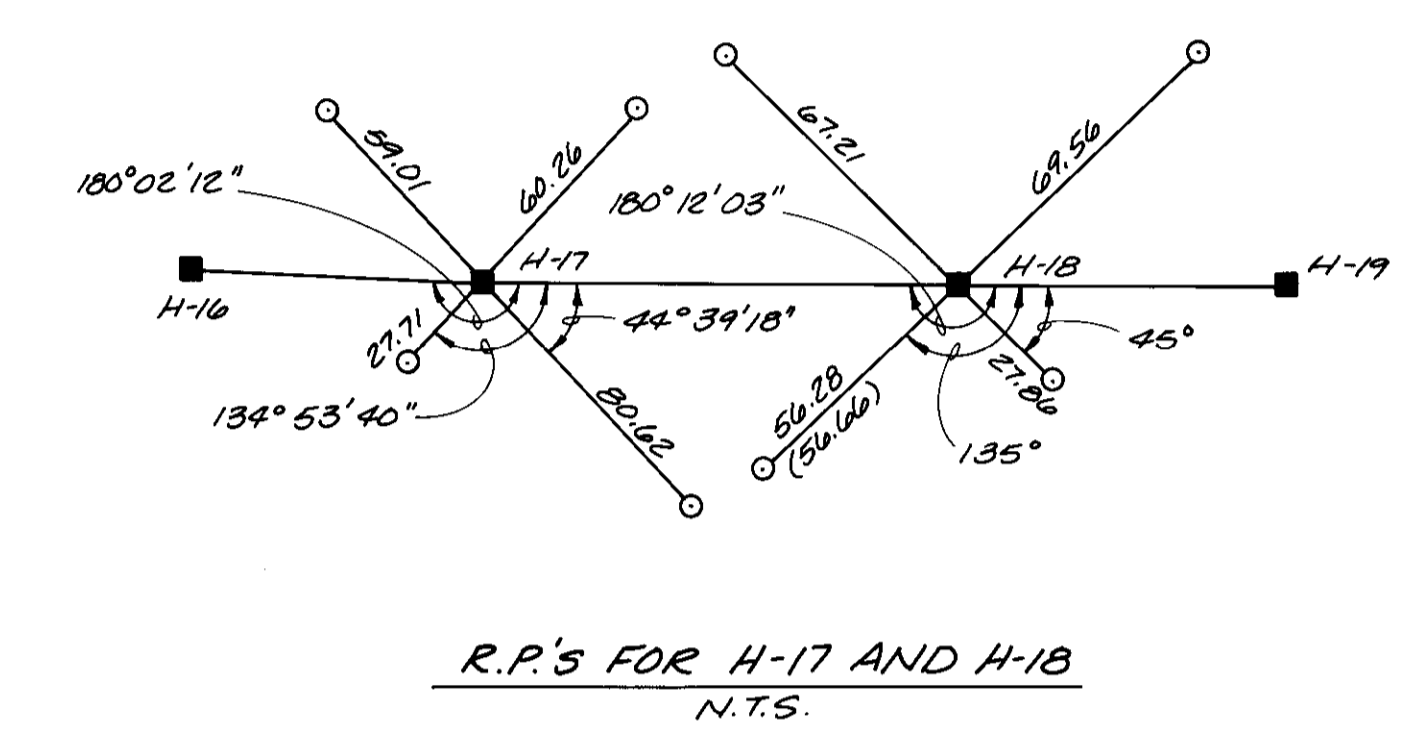
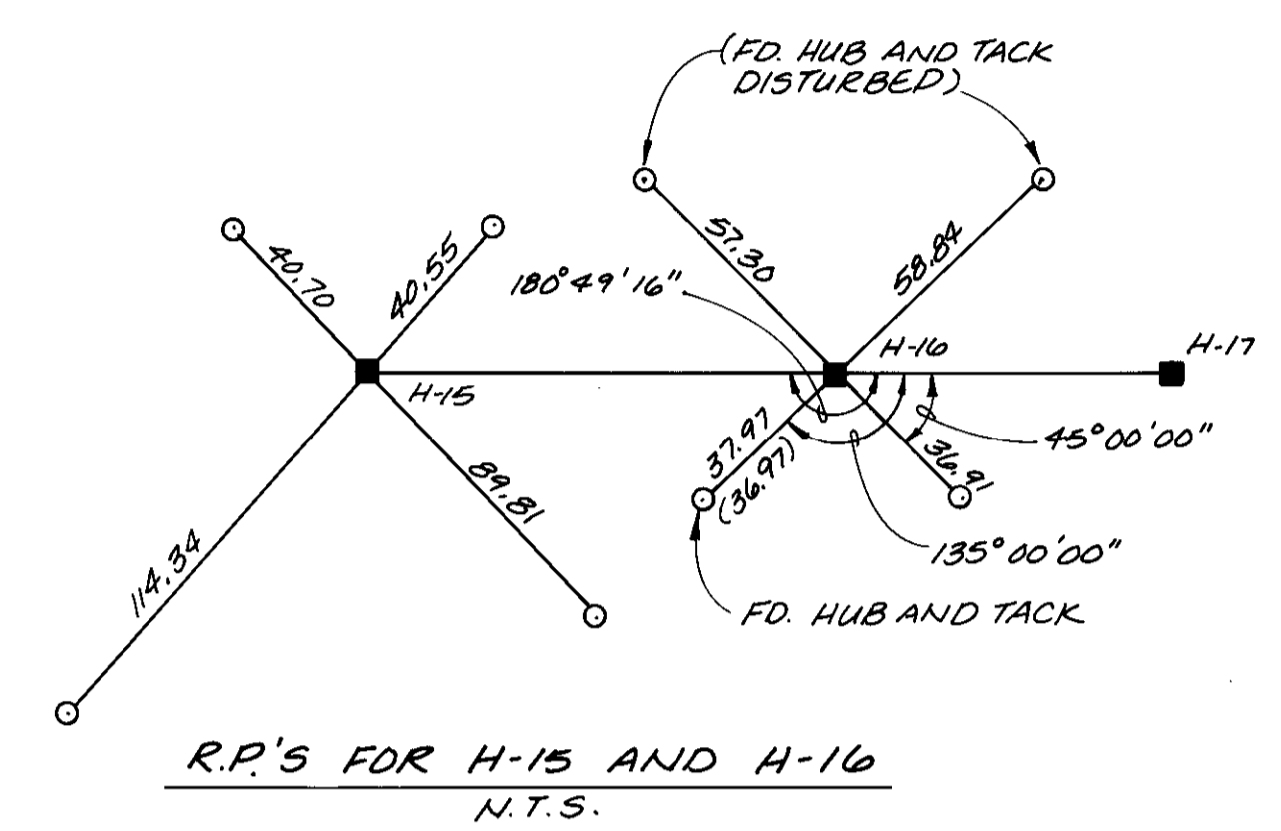


BASIS OF BEARINGS

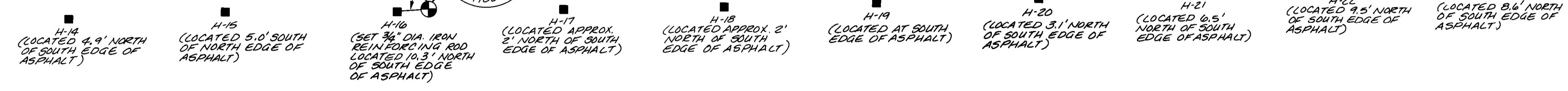
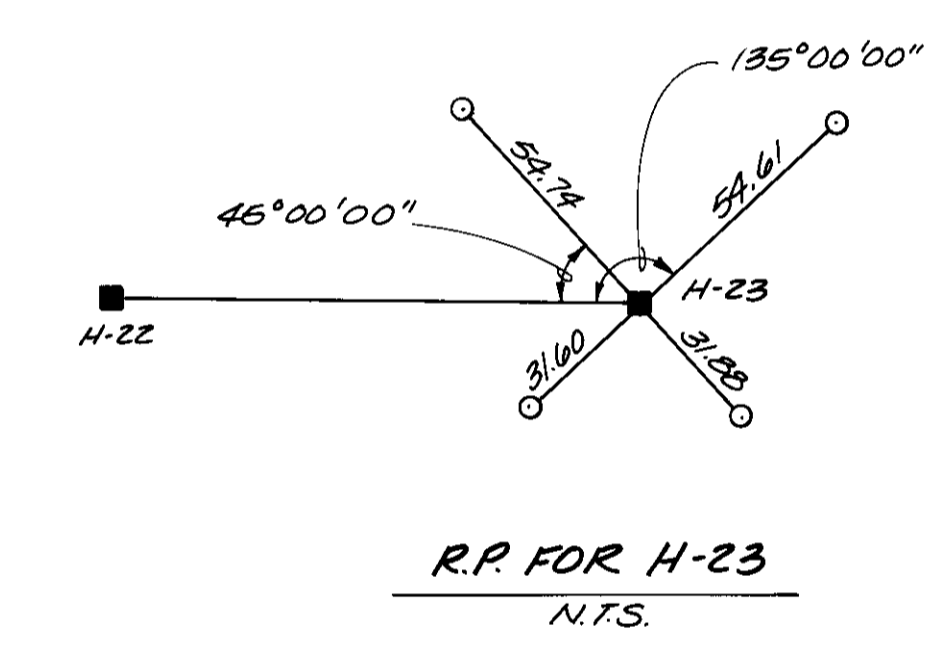
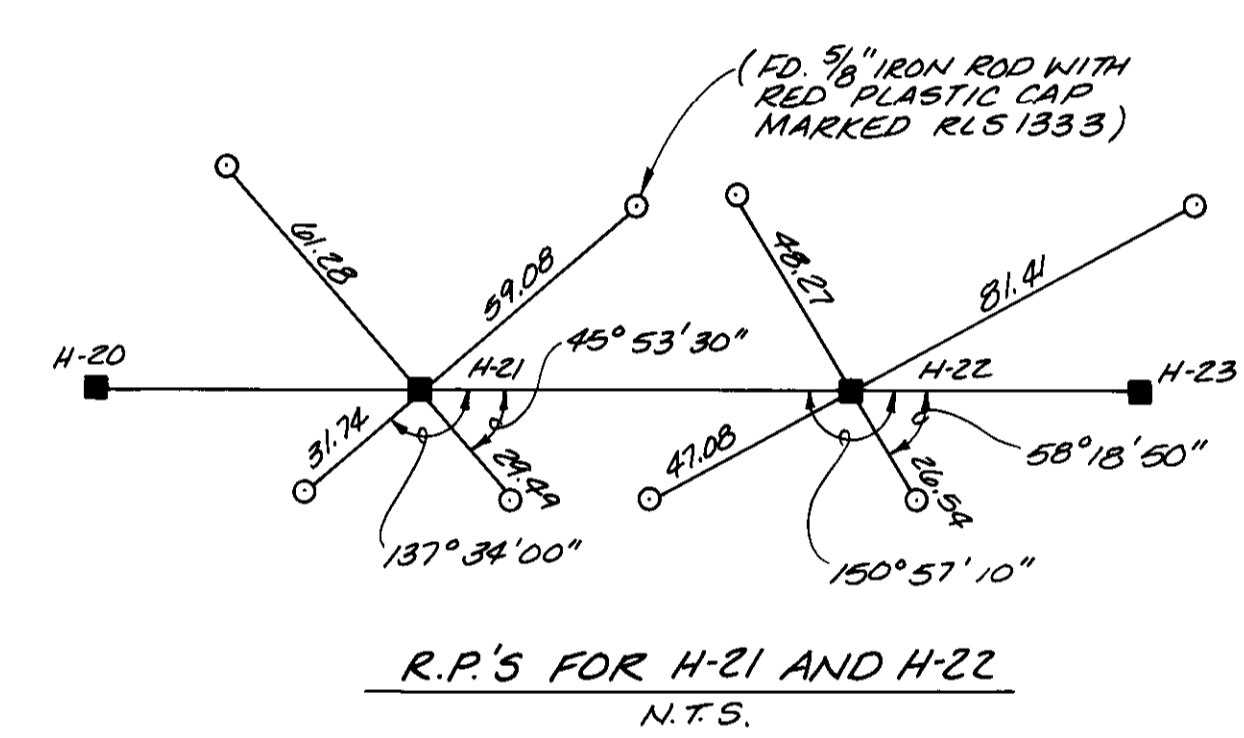
Grid North, NAD 1927, Oregon North Zone, from survey ties to U.S. Coast and Geodetic Survey Stations "Mission" and "Mission Azimuth". (See Narrative of Survey)

- LEGEND**
- Set 5/8"x30" Iron Rod (concrete-reinforcing rod), 6" below surface of asphalt roadway, with 2" diameter aluminum cap attached, marked as shown, and accessible through an aluminum monument cover with hinged lid, marked "Survey Monument - Do Not Disturb". Monument cover is set flush in the roadway and encased in concrete. Refer to Oregon Corner Restoration forms filed separately for additional information.
 - Set 5/8"x30" Iron Rod (concrete-reinforcing rod) unless otherwise noted, 4" to 7" below surface of asphalt roadway, with 2" diameter aluminum cap attached, accessible through an aluminum monument cover with hinged lid, marked "Survey Monument - Do Not Disturb". Monument cover is set flush in the roadway and encased in concrete. Monument markings include a punch mark at the point of measurement, the "H" designation, and "LS 1099 1988".
 - Found unmarked 5/8" Iron Reinforcing Rod at reference point, unless otherwise noted. (See Narrative of Survey)
 - () Dimension determined by Anderson-Perry & Associates, Inc.



OREGON STATE PLANE COORDINATES (north zone)

STATION	EAST	NORTH
H14	2468684.58	734838.47
H15	2469185.66	734860.05
H16	2469734.89	734860.14
H17	2470266.83	734867.74
H18	2470781.12	734875.41
H19	2471268.85	734884.25
H20	2471788.07	734899.13
H21	2472283.51	734913.77
H22	2472764.29	734929.58
H23	2473255.24	734944.20



NARRATIVE OF SURVEY

This survey was performed at the request of EDT Construction for the purpose of reestablishing certain survey monuments located within the Umatilla Indian Reservation in Sections 10 and 11, Township 2 North, Range 33 East, Willamette Meridian, Umatilla County, Oregon. A brief discussion of the history of activities surrounding these survey monuments is necessary to enhance the user's understanding of this survey.

During 1972, ground control and aerial mapping surveys were conducted in this area by Aerial Mapping Company of Oregon under Contract No. DOT-FH10-2514. These surveys were performed under the supervision of George Pongracz-Bartha, Oregon Registered Land Survey No. 426. As part of the ground control surveys, randomly located control points designated "H 14 through H 23" were established along a portion of Umatilla Co. Road No. 900 and along Umatilla Co. Road No. 908 (Short Mile Road). The ground control surveys were performed with a one-second theodolite and electronic distance-measuring device. U.S. Coast & Geodetic Survey stations MISSION and MISSION AZIMUTH were used to establish the coordinate basis and the orientation of these surveys. A closed traverse was run and adjusted by the Compass Rule method with distances measured on the ground reduced to their grid equivalent by a ratio of 0.9999323. The ratio of traverse closure after angular closure adjustment was 1:54000+. The information given above concerning the 1972 survey by Aerial Mapping Co. has been extracted from their Report of Survey, dated November, 1972, a copy of said report having been furnished to Anderson-Perry & Associates, Inc.

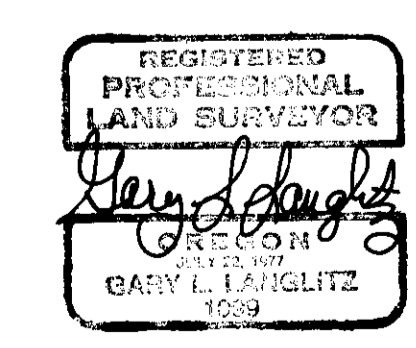
During 1988, while under contract with the Dept. of Interior, Bureau of Indian Affairs, EDT Construction undertook to reconstruct a portion of County Road 900 and all of Short Mile Road. Their contract required that the aerial survey control points designated H 14 to H 23 be referenced and reset after the completion of construction. Also, the West 1/4 corner and the Center 1/4 corner of Section 11 were to be referenced and reset.

In March, 1988, Whiteshield Inc. from Grandview, Washington, at the request of EDT Construction, recovered or reset the control points H 14 to H 23 and also recovered the two 1/4 corners mentioned above. Their survey crew then established reference points for each of these twelve survey positions. Copies of the reference point diagrams and descriptions of their survey activities have been furnished to Anderson-Perry & Associates, Inc.

EDT Construction completed the reconstruction of these roadways early in August, 1988, and requested that Anderson-Perry & Associates, Inc. reestablish the twelve survey positions from the reference points as established by Whiteshield Inc. and record the appropriate documents with the Umatilla County Surveyor. On August 17-18, Gary Langlitz, LS 1099, assisted by Steven J. Anderson, recovered the existing reference points as depicted on this survey map. The actual survey point locations were reestablished from the recovered reference points. Any discrepancies found in the distance measurements to the reference points is noted on this map. The angular relationships of the reference points were not verified by Anderson-Perry & Associates, Inc. On August 25, Ed Stryker and Steven J. Anderson, employees of Anderson-Perry & Associates, Inc., set and marked the monuments and placed the monument covers as described on this map.

This survey map, therefore, documents the origin and current condition of ten survey control points which were initially established in 1972 by Aerial Mapping Company of Oregon. Also documented on this map and on Oregon Corner Restoration Forms filed separately, is the referencing and restoration of the West 1/4 corner and the Center 1/4 corner of Section 11, T2N, R33E. It should be noted by the user of this map that, unless specifically noted otherwise, all coordinates, directions, distances, and descriptions shown hereon have been transcribed directly from the records furnished to Anderson-Perry & Associates, Inc. concerning the Aerial Mapping Co. of Oregon surveys performed in 1972 and the surveys performed in March, 1988 by Whiteshield Inc.

RECEIVED BY
Umatilla County Surveyor
Date 12-88
Rec'd by KA
No. 88-87-C



MONUMENTATION SURVEY

LOCATED IN THE NE 1/4 AND THE SE 1/4 OF SECTION 10, AND IN THE NE 1/4, THE SE 1/4, THE NW 1/4, AND THE SW 1/4 OF SECTION 11, T.2 N., R.33 E., WILLAMETTE MERIDIAN, UMATILLA COUNTY, OREGON

FOR: EDT CONSTRUCTION 7409 N.E. HAZEL DELL AVE. SUITE D WASHINGTON, WA 98066

SCALE: 1" = 200'

DATE: AUG. 1988

JOB NO. W7506-70

anderson perry & associates, inc.
SURVEYING • ENGINEERING • MATERIALS TESTING

LA GRANDE, OR WALLA WALLA, WA. LEWISTON, ID.