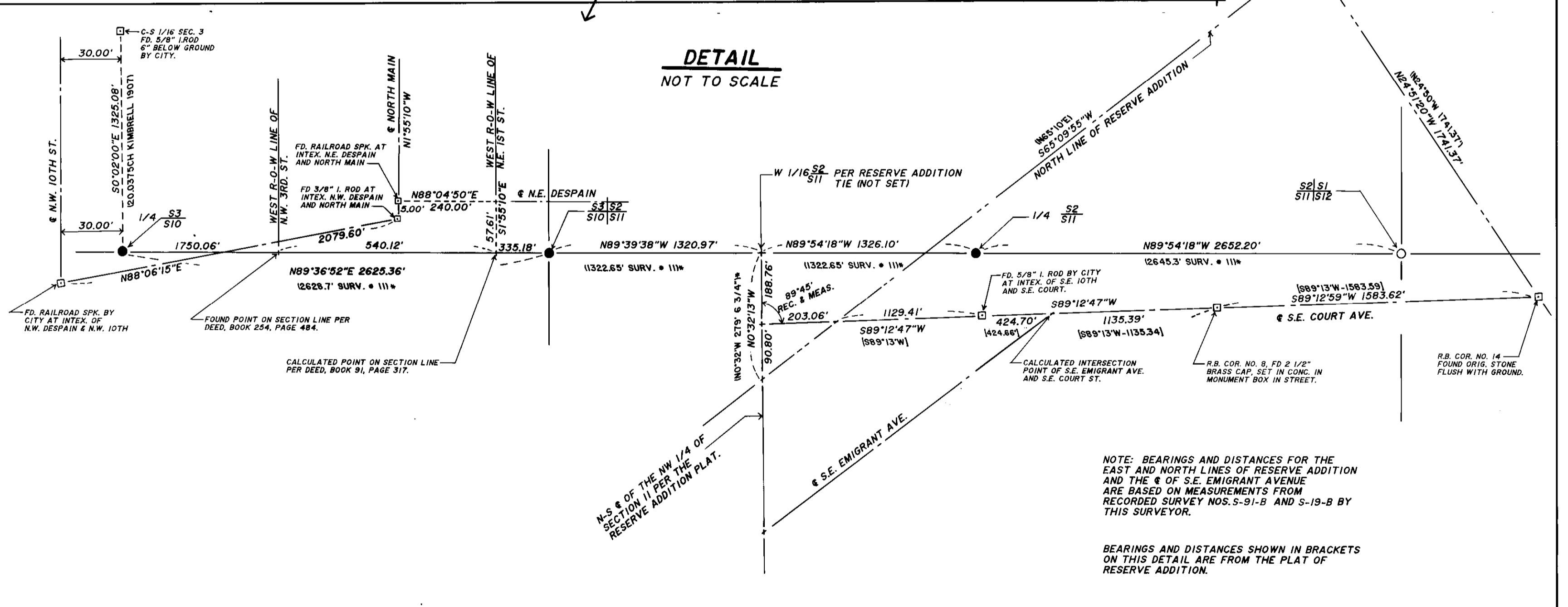


**LEGEND**

- - CORNER REESTABLISHED BY SURVEY, AND REMONUMENTED WITH 2 1/2" BRASS CAP ON 1/2" x 30" G.I.P. UNLESS OTHERWISE NOTED. SEE CORNER RECORD.
  - ⊙ - CORNER REMONUMENTED FROM EXISTING EVIDENCE. SET 2 1/2" BRASS CAP ON 1/2" x 30" G.I.P. UNLESS OTHERWISE NOTED. SEE CORNER RECORD.
  - - OTHER MONUMENTS USED IN THIS SURVEY AS NOTED.
  - - FOUND MONUMENT AS INDICATED. SEE CORNER RECORD.
- (X)OXIRI - GLO RECORD FROM CONTRACT NO. 107.  
 (X)OXIR3 - GLO RECORD FROM CONTRACT NO. 106.  
 (X)OXIR6 - SPECIAL CONTRACT AND INSTRUCTIONS DATED MAY 4, 1887 AS SURVEYED BY JAMES CURRIN & JAMES NOLAND.  
 (X)OXIR7 - SURVEYED UNDER GROUP 29 INSTRUCTION BY JOHN WILKES IN 1917.  
 \* - INDICATES RECORD USED IN CORNER REESTABLISHMENT.  
 (X)OXI - OTHER RECORDS ARE AS INDICATED IN PARENTHESIS.

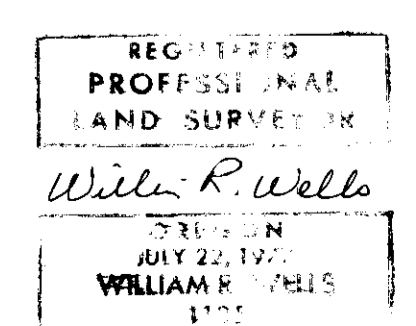
**NOTE:**

BEARINGS FOR SECTIONS 1 THROUGH 4 ARE BASED ON THE BEARING BETWEEN THE 3/8" IRON ROD AT THE INTERSECTION OF NORTH MAIN AND N.W. DESPAIN AND THE 2 1/2" BRASS CAP MONUMENTING THE S.W. CORNER OF SECTION 3 BEING S88°57'33"W.



**NARRATIVE OF SURVEY**  
SEE SURVEY NARRATIVE FILED ON SEPARATE SHEETS.

RECEIVED BY  
Umatilla County Surveyor  
Date: 5-88  
Rec'd By: KA  
No. 88-19-C



WILLIAM R. WELLS, PLS LAND SURVEYING SERVICES P.O. BOX 1696 PENDLETON, OREGON 97801 PHONE: 503 276 6362		PROJECT: PUBLIC LAND CORNER REESTABLISHMENT & REMONUMENTATION SURVEY FOR UMATILLA COUNTY LOCATED IN SECTIONS 1 THROUGH 6 T2N R32E W.M. UMATILLA COUNTY, OREGON	
Date: 3-30-88	Dr. By: AWG		
Ck. By: WRW	No: 87-26		