

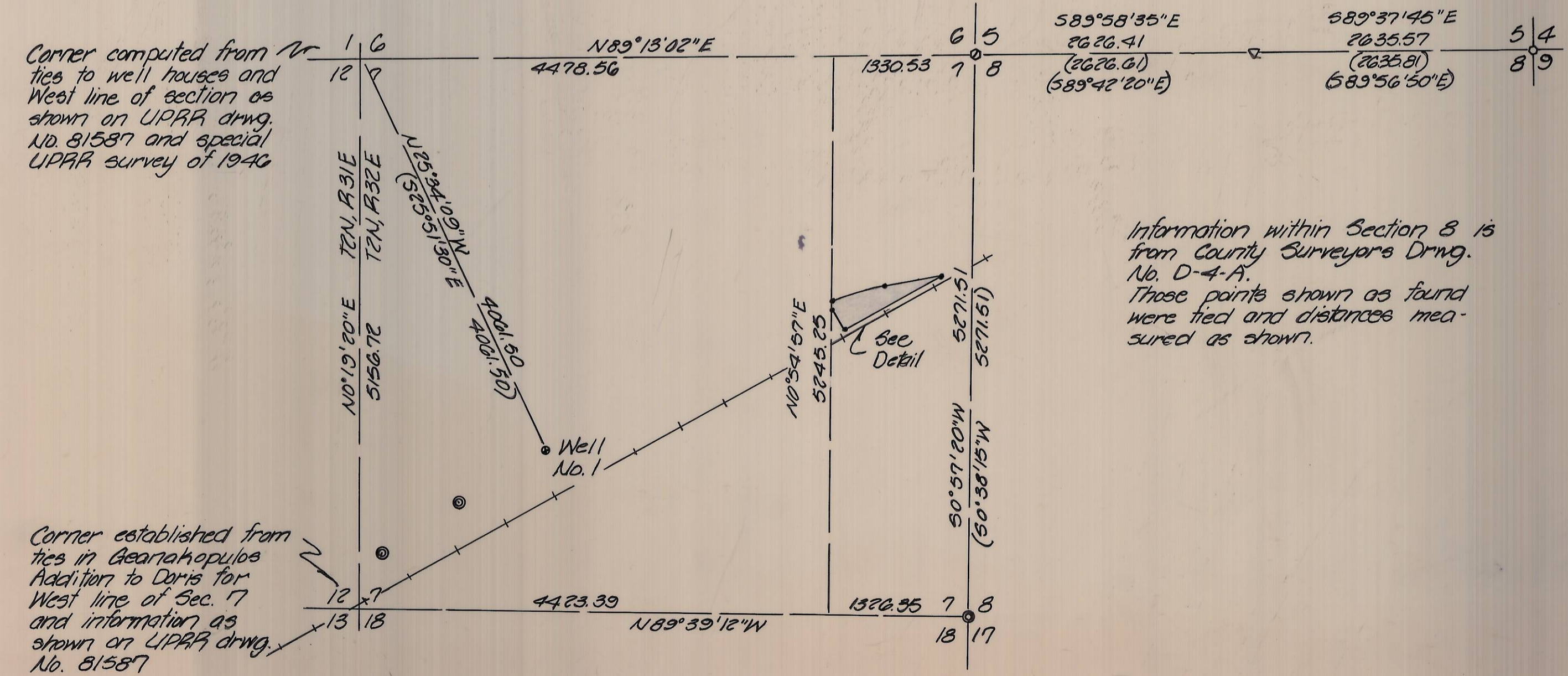
NARRATIVE:

The purpose of this survey was to establish the boundaries of a four acre parcel of land being leased to Pendleton Grain Growers. The South line of the parcel is 66 feet from the present mainline as shown on the Union Pacific Railroad Drwg. No. 81587. The North line is 50 feet South of the centerline of the 1881 alignment for the original track. Points were found that appeared to be the old roadbed of this track, and they fit information for the South right-of-way line of the 1881 track as shown on UPRR Drwg. No. 81587 at Station 2116+90. This point had been established in the past for the Part of Umatilla, County Surveyor's Drwg. No. J-81-B.

The West line is established from the West line of the East half of the East half of Section 7. This was established by breaking down the section as shown on the accompanying sketch. The East line of the section was established from ties to the section corners and information on County Surveyor's Drwg. No. D-4-A.

The Southwest section corner was established by tying to points in Gearakopoulos Addition and projecting the West line of Section 7 from the Gearakopoulos Plot to intersect the UPRR mainline. Information on the UPRR Drwg. No. 81587 was used to establish the section corner. The Northwest section corner was established from a tie off of Well No. 1 as shown on UPRR Drwg. No. 81587. This computed point was established in the field and no evidence was found of the original corner.

Bearings are based upon ties into the City of Pendleton Local Coordinate System on County Surveyor's Drwg. No. 84-65-C.



SECTION BREAKDOWN
1" = 1000'

- denotes set 3/8" x 30" iron pin with aluminum cap stamped PLB 933
- o denotes find 3/8" iron pin set by this firm 2-5-85 for Brenda
- () denotes record bearing and distance
- o denotes find iron pin in concrete
- ▽ denotes find 3/4" iron pin
- o denotes find hub set from ties
- o denotes find Brass Cap on 2" galvanized iron pipe
- o denotes find Brass Cap in Gearakopoulos Addition

Information within Section 8 is from County Surveyor's Drwg. No. D-4-A. These points shown as found were tied and distances measured as shown.

Corner computed from ties to well houses and West line of section as shown on UPRR drwg. No. 81587 and special UPRR survey of 1940

Corner established from ties in Gearakopoulos Addition to Davis for West line of Sec. 7 and information as shown on UPRR drwg. No. 81587

KRUMBEIN ENGINEERING LTD. ENGINEERS - SURVEYORS - PLANNERS 381 S.E. Second Pendleton, Oregon	Scale 1" = 100'	Drn. By MLD	Drwg. No. 85-23D	Revision 1
	Date 10-7-85	Ckd. By DHW	Job No. 85-124	Revision 2
Survey for PGG		REGISTERED PROFESSIONAL LAND SURVEYOR 		RECEIVED BY Umatilla County Surveyor Date 10-14-85 Rec'd By KA No. 85-157-C
NE 1/4, Sec 7, T2N, R32E, W1M.				