

**CORNER ACCESSORIES & MARKS ON BRASS CAP MONUMENTS SET**

See accompanying No. on map, Lt., Twp., Range, Date & PLS 848 are also stamped on all monuments. All Bearing Trees are scribed in accordance with B.L.M. Manual of Surveying Instructions. See Certified Record of Land Corner Monumentation, as filed in the office of the Umatilla County Surveyor, for complete description of History, Evidence Found, Monument Set & Accessories Established. All Bearing Trees have Brass Washers stamped PLS 848 nailed just above the B T scribing & Bearing Tree signs nailed just above the blaze, Red band painted around each tree above the blaze.

- 1) 1/4 S11 S12 A Pine 15" dia. Bears S13°E, 91.5 ft.  
A " 11" dia. " N29°E, 2.8 ft.
- 2) S2 S11 S12 A Fir 8" dia. Bears N56°W, 27.6 ft.  
A Pine 12" dia. " N 9°E, 36.2 ft.  
A Fir 15" dia. " S14°E, 30.3 ft.  
A Fir 15" dia. " S39°W, 47.2 ft.
- 3) 1/4 S11 S12 A Pine 16" dia. Bears N2°W, 8.8 ft.  
A Fir 9" dia. " S53°E, 23.9 ft.
- 4) 1/4 S12 S7 A Pine 14" dia. Bears S39°E, 120.4 ft.  
No tree available in sec. 12
- 5) S E 1/6 S12 A Pine 16" dia. Bears N43°W, 121.3 ft.  
A " 14" dia. " N 86°E, 30.5 ft.
- 6) S1/6 S12 A Pine 14" dia. Bears N 63°E, 85.8 ft.  
No tree available to the West
- 7) S1/6 S11 S12 No trees available
- 8) S10 S11 S13 S14 A Pine 14" dia. Bears S 58°W, 146.3 ft.  
A Juniper 8" dia. Bears S62°E, 116.8 ft.  
No trees available sec. 10 B 11
- 9) N 1/6 S11 S14 No trees available
- 10) E 1/6 S11 S14 No trees available
- 11) E 1/6 S12 S13 A Fir 9" dia. Bears S56°W, 4.5 ft.  
A Fir 18" dia. Bears N54°E, 30.0 ft.
- 12) S12 S13 S18 A Fir 18" dia. Bears N47°W, 13.7 ft.  
A Tamarack 6" dia. Bears North, 6.8 ft.  
A Fir 15" dia. Bears S65°E, 28.2 ft.  
A Fir 8" dia. Bears S27°W, 4.4 ft.
- 13) N 1/6 S13 S18 A Pine 16" dia. Bears N19°E, 2.6 ft.  
A Pine 10" dia. " S36°W, 44.3 ft.
- 14) NE 1/6 S13 A Juniper 10" dia. Bears S64°W, 9.5 ft.  
No tree available
- 15) NE 1/6 S14 A Pine 9" dia. Bears N66°E, 35.1 ft.  
A " 20" dia. " N 2°E, 34.0 ft.
- 16) N 1/6 S14 A Pine 16" dia. Bears N71°W, 29.5 ft.  
A " 14" dia. " S19°E, 69.3 ft.
- 17) NW 1/6 S14 A Pine 22" dia. Bears N 6°E, 84.5 ft.  
A " 12" dia. " S19°W, 87.8 ft.
- 18) W 1/6 S14 A Fir 9" dia. Bears N24°E, 21.4 ft.  
A " 8" dia. " S25°E, 15.3 ft.
- 19) C 1/4 S13 A Pine 8" dia. Bears N2°E, 22.0 ft.  
A " 10" dia. " S 82°W, 15.7 ft.
- 20) E 1/6 S13 S13 A Pine 10" dia. Bears N41°E, 38.5 ft.  
A " 9" dia. " S 57°E, 55.8 ft.
- 21) 1/4 S13 S18 A Pine 10" dia. Bears N37°W, 43.5 ft.  
A " 20" dia. " N 1°E, 16.3 ft.
- 22) SE 1/6 S14 A Pine 12" dia. Bears N38°E, 20.8 ft.  
A " 17" dia. " S18°E, 22.8 ft.
- 23) S 1/6 S14 A Pine 14" dia. Bears West, 30.8 ft.  
A " 18" dia. " S 52°E, 87.2 ft.
- 24) SW 1/6 S14 A Tamarack 16" dia. Bears N50°E, 45.4 ft.  
A Fir 11" dia. " S70°E, 6.0 ft.
- 25) W 1/6 S14 S23 A Fir 6" dia. Bears N4°W, 6.2 ft.  
A " 10" dia. " S17°W, 17.0 ft.
- 26) E 1/6 S14 S23 A Pine 11" dia. Bears N44°W, 100.5 ft.  
A " 13" dia. " S 45°W, 63.9 ft.
- 27) E 1/6 S13 S24 A Fir 9" dia. Bears N14°W, 4.5 ft.  
A " 15" dia. Bears S62°W, 16.5 ft.
- 28) NE 1/6 S23 A Pine 10" dia. Bears N48°E, 6.8 ft.  
A " 9" dia. Bears S57°W, 12.4 ft.
- 29) N 1/6 S23 C A Pine 20" dia. Bears S71°E, 14.2 ft.  
A " 12" dia. " S 52°W, 31.2 ft.
- 30) 1/4 S22 S23 No trees available
- 31) C 1/4 S23 A Pine 24" dia. Bears N28°E, 20.2 ft.  
A " 4" x 4" Wood Post " South, 5.0 ft.
- 32) S23 S24 A Pine 9" dia. Bears N3°W, 35.2 ft.  
A " 10" dia. " N 74°E, 25.9 ft.
- 33) NW 1/6 S24 C A Pine 10" dia. Bears N43°W, 24.1 ft.  
A " 10" dia. " S12°E, 26.2 ft.
- 34) E 1/6 S24 C A Pine 12" dia. Bears N23°E, 107.4 ft.  
A Pine 12" dia. Bears S1°W, 41.5 ft.
- 35) S24 S19 A Fir 11" dia. Bears N25°E, 12.3 ft.  
A Pine 12" dia. " S 67°W, 5.7 ft.
- 36) S24 S19 S16 A Pine 16" dia. Bears S27°E, 60.6 ft.  
A " 16" dia. " S38°W, 61.5 ft.
- 37) S E 1/6 S24 A Pine 11" dia. Bears N56°W, 42.2 ft.  
A " 11" dia. " S20°E, 67.4 ft.
- 38) S E 1/6 S23 A Pine 14" dia. Bears S64°W, 196.0 ft.  
No other tree available
- 39) S 1/6 S23 C A Pine 14" dia. Bears S 82°E, 34.3 ft.  
A " 10" dia. " S 50°W, 91.4 ft.
- 40) E 1/6 S23 S26 A Fir 16" dia. Bears N17°E, 7.2 ft.  
A " 16" dia. " S33°W, 7.2 ft.
- 41) S23 S24 S25 A Pine 20" dia. Bears N42°W, 102.6 ft.  
A " 10" dia. " S 29°W, 93.4 ft.  
No tree available in NE quad.
- 42) W 1/6 S21 S25 No trees available
- 43) 1/4 S24 S25 A Pine 18" dia. Bears N76°E, 116.8 ft.  
A " 14" dia. " S 49°E, 42.3 ft.
- 44) S25 S16 A Pine 16" dia. Bears N39°E, 7.7 ft.  
A " 16" dia. " S64°W, 8.5 ft.
- 45) N 1/6 S25 No trees available
- 46) 1/4 S26 S25 A Pine 14" dia. Bears S 45°W, 33.7 ft.  
A " 10" dia. " N 27°E, 55.3 ft.  
3/4" x 24" steel pin at cor.
- 47) W 1/6 S25 C A Pine 8" dia. Bears S 3°E, 23.2 ft.  
A " 8" dia. " N 54°E, 67.7 ft.
- 48) C 1/4 S25 A Pine 13" dia. Bears N13°W, 19.4 ft.  
A " 14" dia. " S 27°E, 62.9 ft.
- 49) E 1/6 S25 C A Pine 10" dia. Bears S61°W, 118.2 ft.  
No other tree available
- 50) S25 S30 Steel post 7.0 ft. North  
Steel post 6.2 ft. West No trees available
- 51) S 1/6 S25 S30 A Pine 10" dia. Bears N88°W, 56.2 ft.  
A " 14" dia. " N 9°E, 65.5 ft.
- 52) S E 1/6 S25 A Lodgepole Pine 9" dia. Bears N1°E, 30.6 ft.  
A Fir 8" dia. Bears S19°E, 8.2 ft.
- 53) S 1/6 S25 C A Pine 12" dia. Bears N51°W, 53.8 ft.  
A " 13" dia. " S88°E, 7.7 ft.
- 54) SW 1/6 S25 A Pine 13" dia. Bears N52°E, 103.0 ft.  
A " 12" dia. " S79°W, 201.2 ft.
- 55) W 1/6 S25 S36 A Pine 20" dia. Bears N22°W, 192.8 ft.  
No other tree available

**LEGEND**

● Set 3"x30" Galvanized Iron Pipe With 3" Brass Cap Monument at Corner Position.

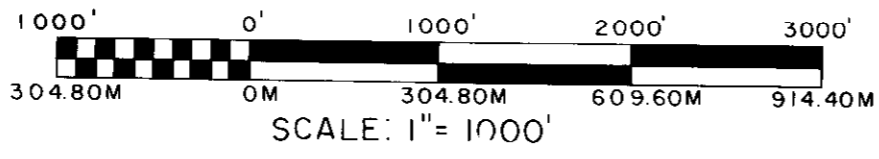
○ Found Brass Cap Monument of Record

----- National Forest Boundary Posted (Steel Posts & Bdry. Signs Set at Max. 400' Intervals & approx. 5' ea. Way from Land Corners.)

( ) Record Bearing & Distance

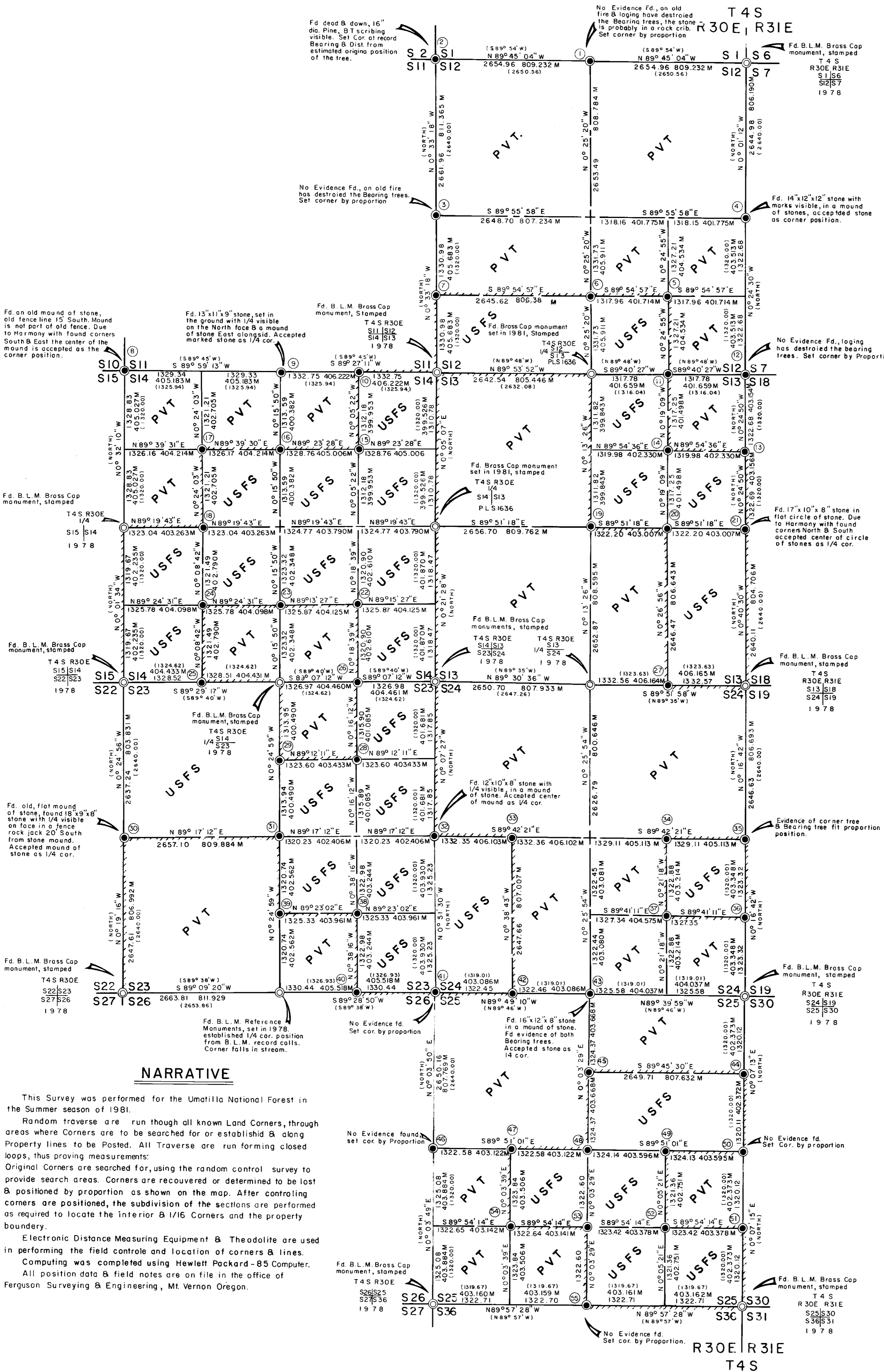
B. L. M. Bureau of Land Management U.S. Dept. of the Interior

Mag. Dec. = 20° E



SCALE: 1" = 1000'

**BASIS OF BEARINGS**  
SOLAR OBSERVATIONS CONVERTED TO GRID BEARINGS AT CENTER OF PROJECT.



**NARRATIVE**

This Survey was performed for the Umatilla National Forest in the Summer season of 1981. Random traverse are run through all known Land Corners, through areas where Corners are to be searched for or established & along Property lines to be Posted. All Traverse are run forming closed loops, thus proving measurements. Original Corners are searched for, using the random control survey to provide search areas. Corners are recovered or determined to be lost & positioned by proportion as shown on the map. After controlling corners are positioned, the subdivision of the sections are performed as required to locate the interior B 1/16 Corners and the property boundary. Electronic Distance Measuring Equipment & Theodolite are used in performing the field control and location of corners & lines. Computing was completed using Hewlett Packard - 85 Computer. All position data & field notes are on file in the office of Ferguson Surveying & Engineering, Mt. Vernon Oregon.

I, Douglas M. Ferguson, Registered Professional Land Surveyor in the State of Oregon, hereby certify that this plot and the notes hereon, or attached, are a correct representation of the survey I performed, during April through September, 1981, for the U.S. Forest Service, in accordance with the statutes of the State of Oregon and with the articles of my contract.

*Douglas M. Ferguson*  
Douglas M. Ferguson  
Registered Professional Land Surveyor  
Oregon Licence 848

**HISTORY**

Township Exterior & Subdivision (T4S, R30E) originally surveyed in 1882, by George S. Pershin, under "General Land Office" contract No. 430. In 1978 the "Bureau of Land Management" remonumented Corners, as noted above on the map by "B.L.M. Brass Cap monument". In early 1981, Corners as shown above where monumented by Dennis Gaylor, P.L.S. 1636.

<b>FERGUSON SURVEYING &amp; ENGINEERING</b> MT. VERNON, OR.	
MAP OF SURVEY	
SUBDIVISION OF SECTIONS 12, 13, 14, 23, 24, & 25 T 4 S, R 30 E UMATILLA COUNTY OREGON	
FOR: UMATILLA NATIONAL FOREST BY: D.M. FERGUSON	
DATE: 1981	SHEET 1 OF 1
SCALE: 1" = 1000'	DRAWN BY: D.M. FERGUSON