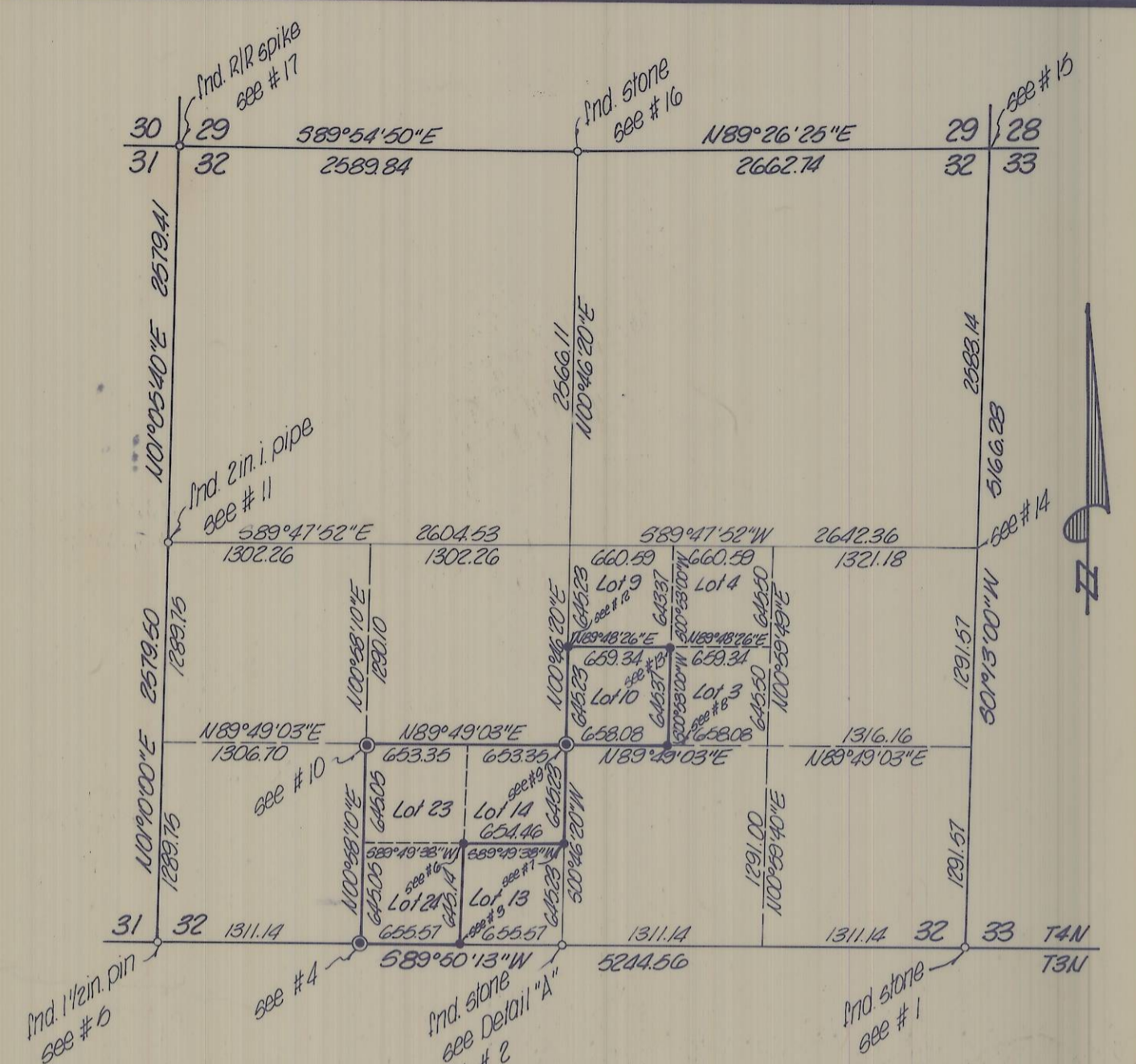
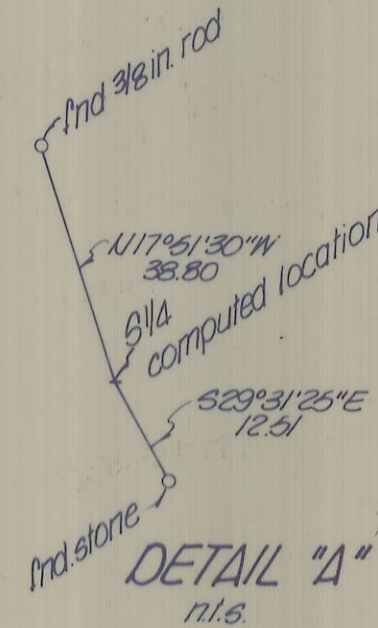


- denotes Brass Cap set
- denotes 3/8 in iron pin set, with aluminum cap where noted
- denotes monument found as noted



SECTION 32, T4N, R37E, W.M.
1" = 1000'

7. Corner fell in tree, so 3/8 in iron pin was set on line 500'46'20"W 0.35 ft.
8. Set 3/8 in iron pin with aluminum cap.
9. 5 1/4 C.C. Set Brass Cap for corner and scribed bearing trees:
Fir 12 in dia., bears N10°20'W 34.80 ft.
Fir 19 in dia., bears S46°38'E 44.15 ft.
10. SW 1/16 Set Brass Cap for corner and scribed bearing trees:
Fir 8 in dia., bears N38°00'W 16.50 ft.
Fir 12 in dia., bears N41°54'E 13.70 ft.
11. 1/4 31/32 Found 2 in iron pipe, set by streamer in 1974 (Co. drwg. no. L-58-B).
12. Set 3/8 in iron pin
13. Set 3/8 in iron pin with aluminum cap.
14. 1/4 32/33 Computed position by the proportionate method.
15. 29/32 | 28/33 Computed position based on survey by Krumbeln Engineering, Co., for Hepworth in 1976 (Co. drwg. no. M-22-B).
16. 1/4 29/32 Found stone and bearing trees.
17. 30/31 | 29/32 Found railroad spike, as used previously by other surveyors.

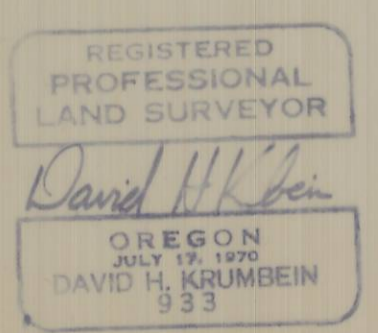
NOTE
Bearings are based on the NW corner and the N 1/4 corner of Section 32, T4N, R37E, W.M., from a survey by Krumbeln Engineering, Co., for Clair Cochran, dated November 22, 1976, Umatilla County Survey Records drawing no. M-2-C.

NARRATIVE

The purpose of this survey is to monument Lots 10, 14, 23, and 24 of the 1884 Plat of Duran & Downing Timber Lots Section 32, T4N, R37E, W.M. as recorded in Umatilla County Plat Book 1, Page 100. All corners found are part of a closed traverse.

- Reference Surveys
 Survey for Tony Rosemerier, by Guy Streamer, dated November 9, 1974, Umatilla County Survey Records drawing no. L-58-B
 Survey for Iola Hepworth, by Krumbeln Engineering, Co., dated November 18, 1976, Umatilla County Survey Records drawing no. M-22-B
 Survey for Clair Cochran, by Krumbeln Engineering, Co., dated November 22, 1976, Umatilla County Survey Records drawing no. M-2-C

1. 31/32 Found stone with "X", was used by surveyor Newbill, September 5, 1957
2. 1/4 30/32 Found stone with "X", set by streamer in 1974, to be South 10.90 ft and East 6.13 ft from the proportioned position as shown on the drawing for Rosemerier (Co. drwg. no. L-58-B). I proportioned new position based on ties to the SW and SE section corners
3. Set 3/8 in iron pin with aluminum cap, found 3/8 in rod N27°51'22"W 52.47 ft. No record of rod found in Umatilla County Surveyor's office.
4. SW 1/16 Set Brass Cap for corner and scribed bearing trees:
Fir 14 in dia., bears N42°10'W 70.00 ft.
Fir 20 in dia., bears S32°30'E 49.70 ft.
6. 31/32 Found 1 1/2 in iron pin, set by streamer in 1974 (Co. drwg. no. L-58-B)
6. Set 3/8 in iron pin with aluminum cap, N24°16'53"W 66.68 ft. Found 12 in pipe. No record of pipe found in Umatilla County Surveyor's office.



RECEIVED BY
 Umatilla County Surveyor
 Date 7-81
 Rec'd By BLS
 No. S-104-B

KRUMBEIN ENGINEERING CO. ENGINEERS - SURVEYORS - PLANNERS 221 S. Main, Pendleton, Oregon	SCALE 1" = 200'
	DATE June 17, 1981
Survey for STANLEY W. STROUD	
5/2 of Section 32, T4N, R37E, W.M.	
DRN. BY MAI	CKD. BY D.H.K.
DRNG. NO. 31-26C	