

Fd. 3" Brass Cap Mon. of record. Stamped:

T5S R30E
S6 S5
S7 S8
1978
B.L.M.

Fd. 3" Brass Cap Mon. of record. Stamped: T5S R30E

1/4 S5
S8
1974
PLS 644

Fd. 3 1/2" Brass Cap Mon. of record. Stamped:

T5S R30E
S5 S4
S8 S9
1978
B.L.M.

Fd. Remains of Original Post, Surrounded by a Mound of Stones.

Fd. 3 1/2" Brass Cap Mon. of record. Stamped:

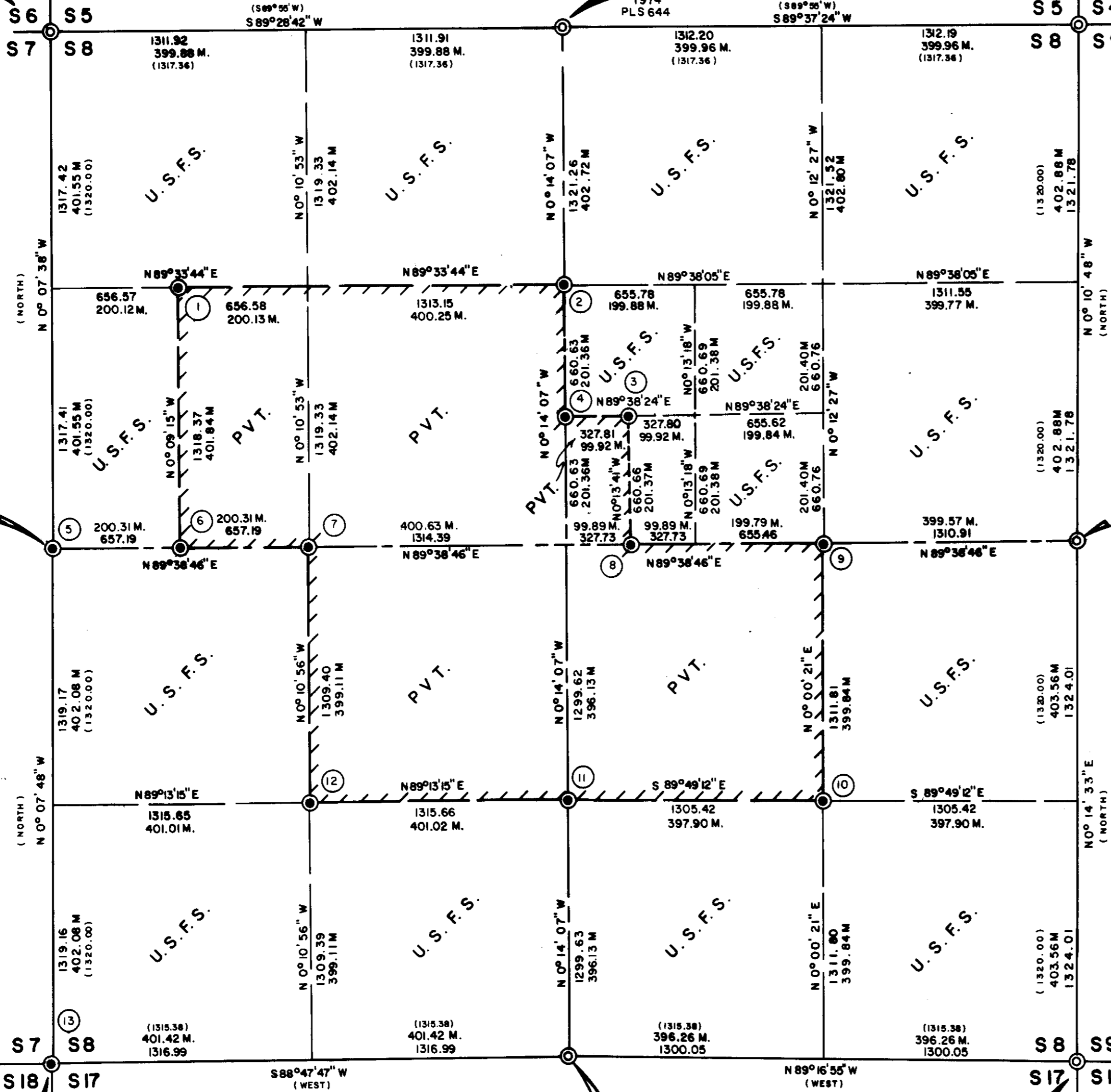
T5S R30E
1/4 S7
S18
1978
B.L.M.

No Evidence Fd. Adjacent Road Construction obliterated all original evidence. Set Corner Position by Proportion.

Fd. 3 1/2" Brass Cap Mon. of record. Stamped:

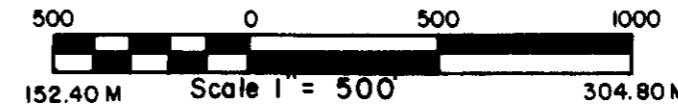
T5S R30E
1/4 S17
S18 S17
1978
B.L.M.

NOTE: B.L.M. as shown above, denotes Bureau of Land Management.



LEGEND

- Set 3" x 30" Galv. Iron Pipe, with 3" Brass Cap for Corner Monument.
- Found Monument of record.
- ▤ National Forest Boundary (Steel posts & signs, set at max. 400' intervals).
- () Record Bearing & Distance.



BASIS OF BEARINGS

SOLAR OBSERVATION
MEAN MAGNETIC DECLINATION, 20°E

3.2808 Ft. = 1.00 Meter

CORNER ACCESSORIES & MARKS ON BRASS CAP MONUMENTS

See corresponding No. on Map Lt., Twp., Rang., Date & P.L.S. 848 are also shown on all Monuments. Bearing Trees are Scribed in accordance with B.L.M. Manual of Surveying Instructions.

See "Certified Record of Land Corner Monumentation", as filed in the office of the Umatilla County Surveyor for complete description of History, Evidence Found, Monument Set & Accessories Established. All Bearing Trees have Brass Washers stamped "PLS 848, Nailed flush in lower blaze, Red bands & Bearing Tree Signs.

- ① S8 A Tamarack 14" dia. bears S69°W 23.7 ft.
C-W-NW-1/64 A L.P. Pine 8" dia. bears N7°W 31.0 ft.
- ② N 1/16 S8 A Pine 8" dia. bears S26°W 39.6 ft.
A Pine 8" dia. bears S44°E 43.0 ft.
- ③ S8 A Tamarack 7" dia. bears N24°E 19.9 ft.
C-W-SW-NE 1/256 A Fir 7" dia. bears S2°W 16.3 ft.
- ④ S8 A Pine 7" dia. bears N63°30'W 22.6 ft.
C-S-N-1/64 A Pine 18" dia. bears N38°E 64.4 ft.
- ⑤ S7 1/4 S8 A Fir 14" dia. bears N15°E 24.4 ft.
A Fir 12" dia. bears N16°W 23.8 ft.
- ⑥ S8 A Fir 17" dia. bears N4°E 11.2 ft.
C-W-W-1/64 A Fir 10" dia. bears S3°W 16.3 ft.
- ⑦ C-W-1/16 S8 A L.P. Pine 10" dia. bears N61°W 29.4 ft.
S8 A L.P. Pine 5" dia. bears S29°E 4.3 ft.
- ⑧ 3/4" x 24" Steel pin set in road for cor., a Brass Cap Mon. stamped S8 bears N0°13'41"W 37.8 ft.
C-W-E 1/256 A L.P. Pine 7" dia. bears S75°30'E 50.0 ft.
W-C A L.P. Pine 11" dia. bears S5°40'W 65.9 ft.
Note: trees reference 3/4" x 24" pin.
- ⑨ C-E-1/16 S8 A Pine 14" dia. bears N13°W 74.7 ft.
S8 A Pine 9" dia. bears S30°30'W 33.5 ft.
- ⑩ SE-1/16 S8 A Tamarack 15" dia. bears N21°E 8.9 ft.
A L.P. Pine 8" dia. bears S3°E 45.3 ft.
- ⑪ S 1/8 S8 A Fir 15" dia. bears N86°E 7.6 ft.
C A Pine 10" dia. bears S50°45'W 28.4 ft.
- ⑫ SW-1/16 S8 A Fir 16" dia. bears S47°45'E 48.7 ft.
S8 A Fir 8" dia. bears S87°30'W 11.2 ft.
- ⑬ S7 1/8 S8 A Fir 12" dia. bears N51°42'E 63.5 ft.
S18 S17 A Fir 12" dia. bears S55°30'E 21.2 ft.
A Fir 12" dia. bears S61°40'W 65.0 ft.
(No trees available in sec. 7)
A Steel post bears N48°W 6.0 ft.

Note: Pine Indicates Ponderosa Pine
L.P. Pine Indicates Lodge Pole Pine

FIELD BOOKS are on file in the office of Ferguson Surveying, Mt. Vernon Or. & show trav. data, describe all corners found & established. Books contain all field data pertinent to this survey.

REGISTERED PROFESSIONAL LAND SURVEYOR

OREGON
JULY 12, 1969
DOUGLAS M. FERGUSON
848

HISTORY
Township was originally surveyed in 1883 Under General Land Office Contract, No. 468 by F.W. Campbell. In 1974, P.L.S. 644 Monumented Corners as shown, & in 1978 the Bureau of Land Management Monumented Corners as shown.

I, Douglas M. Ferguson, Registered Professional Land Surveyor in the State of Oregon, hereby certify that this plat and the notes hereon, or attached, are a correct representation of the survey I performed, During July _____ October 1980, for the U.S. Forest Service, in accordance with the statutes of the State of Oregon and with the articles of my contract.

Douglas M. Ferguson /s/ Douglas M. Ferguson
Registered Professional Land Surveyor
Oregon Licence 848

SURVEY METHOD Electronic Distance Measuring Equipment & Theodolite, Running random Trav. through known(found) corners and providing controle for the establishment of the required comers & marking of property line.

OREGON EAST ENGINEERING, INC.
MT. VERNON, OR.
Map of Survey
SUBDIVISION OF SECTION 8
T5S, R30E W.M.
Umatilla County Oregon
For: Umatilla National Forest By: D.M. Ferguson
Date: Nov. 1980 Sheet 1 of 1
Scale: 1" = 500' Drawn By: D.M.F.