

BASIS OF BEARING IS NORTH ON EASTLY LINE OF SECTION 13 AS PER GLO FIELD NOTES



JEFFERIS'S 2ND ADDITION

FOUND 5/8 REBAR SET BY H.R. LAUGHERY (1977)

FOUND 5/8 REBAR SET BY H.R. LAUGHERY (1977)

BLOCK IV NICHOLS' 2ND ADDITION

SET 2 3/8" O.D. x 28" GALVANIZED I.P. IN STONE MOUND WITH 6" STEEL FENCE POST ALONGSIDE. COR. LIES ON WLY SIDE OF ELY LEVEE OF WALLA-WALLA RIVER.

NOTE:

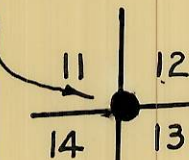
COR. 12/18 LOCATED AT POINT SLY 54.8 FT. ALONG SLY PROLONGATION OF N-S FENCE LINE FROM INTERSECTION OF SAID PROLONGATION WITH THE SLY LINE OF BLK. IV, NICHOLS' 2ND ADD. TO MILTON. SAID SLY LINE LOCATED AT RECORD 303.93 FT. SLY AND PARALLEL WITH NLY LINE OF BLOCK IV AS ESTABLISHED BY H.R. LAUGHERY IN 1977 AS PER PLAT OF JEFFERIS'S 2ND ADD. TO MILTON-FREEWATER.

LEGEND:

- CORNER FOUND
- CORNER SET
- (R) RECORD DISTANCE
- (M) MEASURED DISTANCE

SECTION 13

FOUND WOOD FENCE POST IN N-S PLOWLINE APPROX. 20' SOUTH OF WLY AND NE'LY PLOWLINES
SET 2 3/8" O.D. x 28" GALVANIZED I.P. WITH 6" STEEL FENCE POST ALONGSIDE



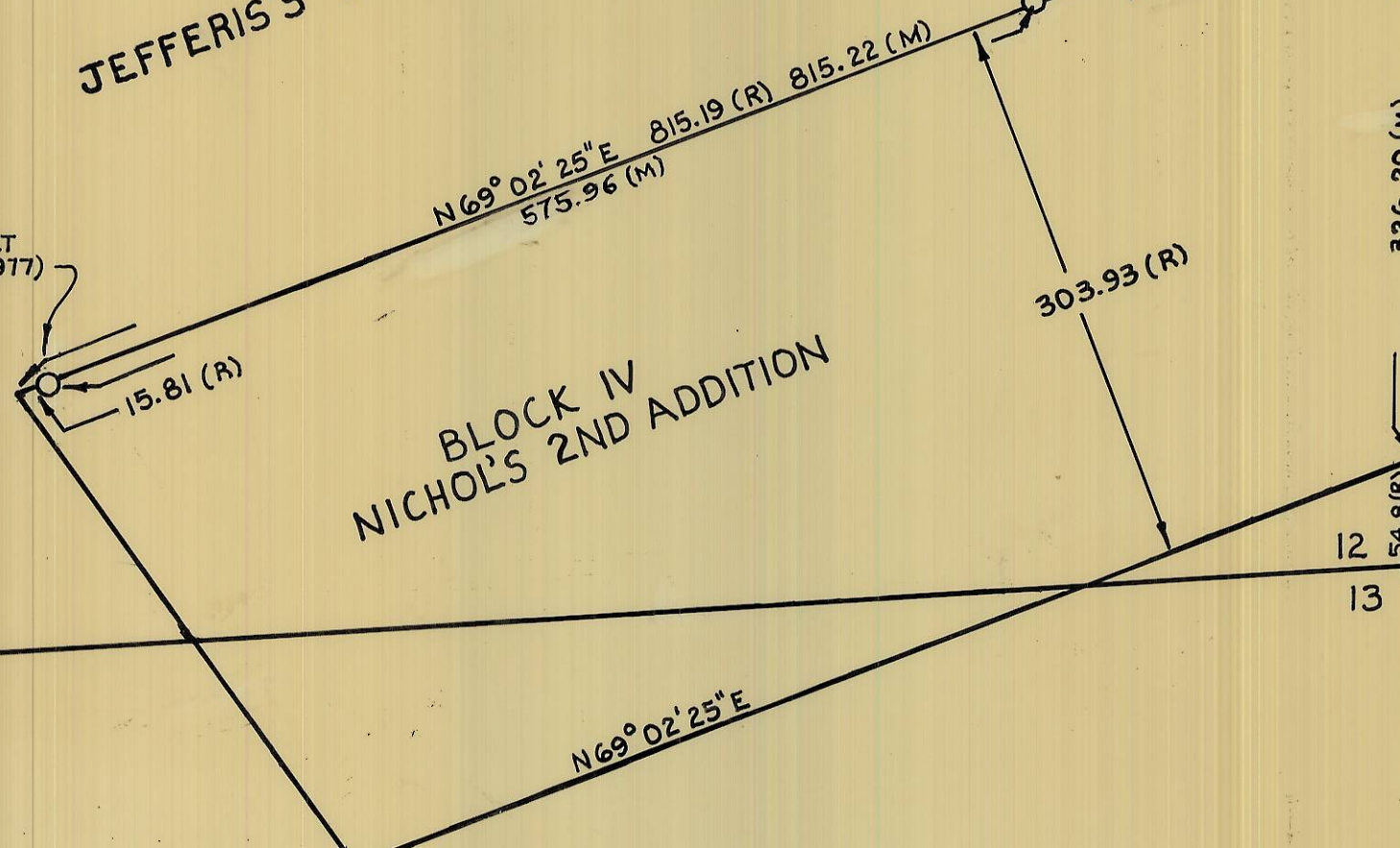
S 86° 24' 19" E
5222.17 (M)

N 1° 01' 02" E
5487.22 (M)



S 88° 12' 11" E
5311.93 (M)

FOUND 2" O.D. IRON FENCE POST AT 4 PT. IN N-S FENCE LINE



N 0° 20' 09" E
326.20 (M)

54.8 (R)

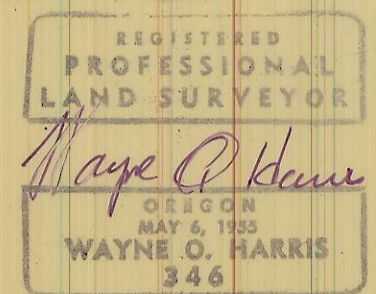
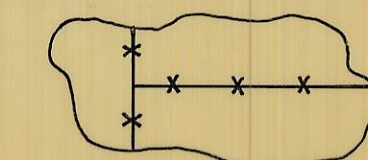
DUE NORTH
5325.51 (M)

RANGE 35
RANGE 36

13 18
24 19

RECEIVED BY
Umatilla County Surveyor
Date 6-12-80
Rec'd By ELS

No. R-118-B
FOUND FENCE CORNER



WAYNE HARRIS Co. Inc.
ENGINEERS SURVEYORS PLANNERS
PENDLETON, ORE.
KEY ADDITION BOUNDARY SURVEY
LOCATION OF SECTION CORNERS
IN
S13 T5N R35E WM

SCALE	DATE	DRN. BY	CHKD.	DRW. NO.
1" = 100'	5-21-80	FLM	F&M	80-190B