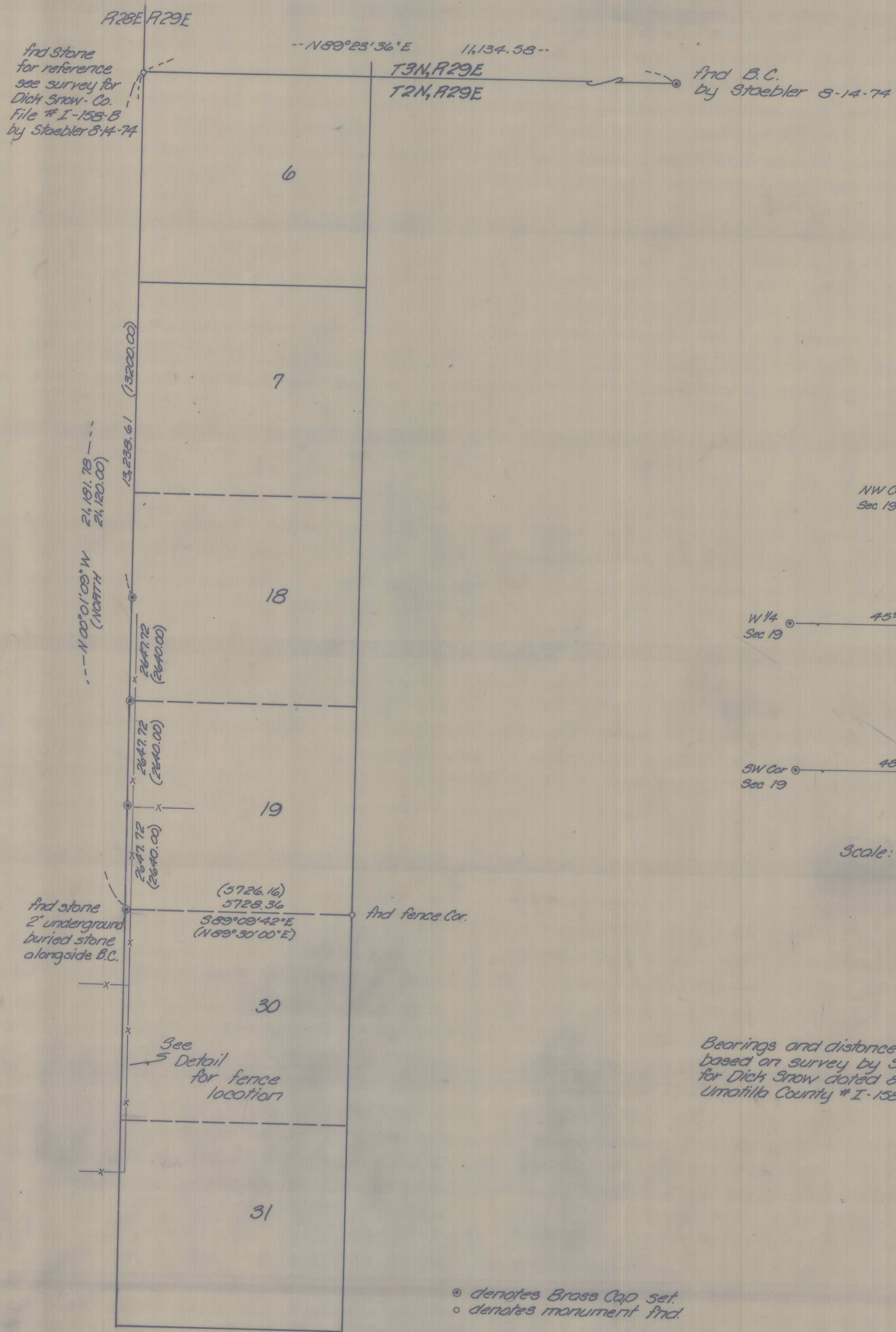
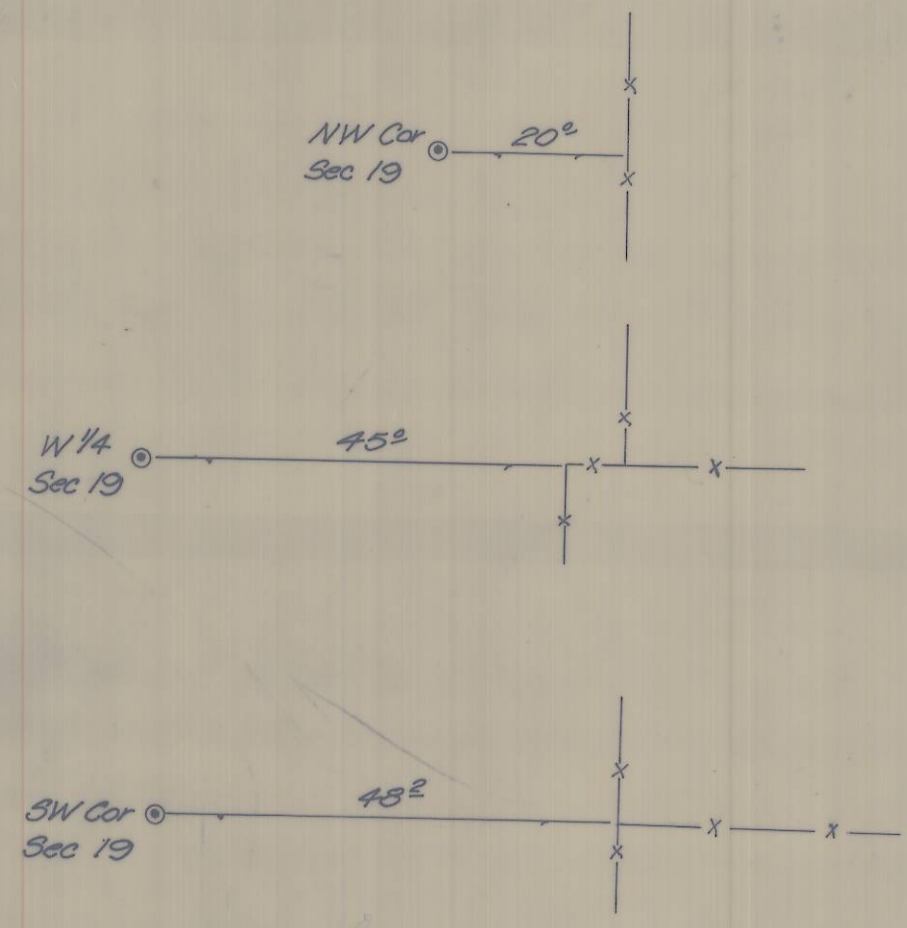


31



DETAIL



Scale: 1" = 20'

Bearings and distances are true, based on survey by Stoebler for Dick Snow dated 5-14-74, Umatilla County # I-158-B.

⊙ denotes Brass Cap set.
○ denotes monument find.

REGISTERED PROFESSIONAL LAND SURVEYOR
Terry E. Hamby
ORIGON
JULY 14, 1978
TERRY E. HAMBY
1438

RECEIVED BY
Umatilla County Surveyor
Date 7-3-80
Rec'd by ELS
No. R-41-B

| | |
|---|---------------------|
| KRUMBEIN ENGINEERING CO. ENGINEERS - SURVEYORS - PLANNERS 221 S. Main, Pendleton, Oregon | SCALE 1" = 2000' |
| | DATE 2-29-80 |
| | DRN. BY M.L.J. |
| | CKD. BY T.E.H. |
| Survey for U.E.C.A. Township Line T2N, R28E & R29E, W.M. | |
| DRNG. NO. 80-116 | |