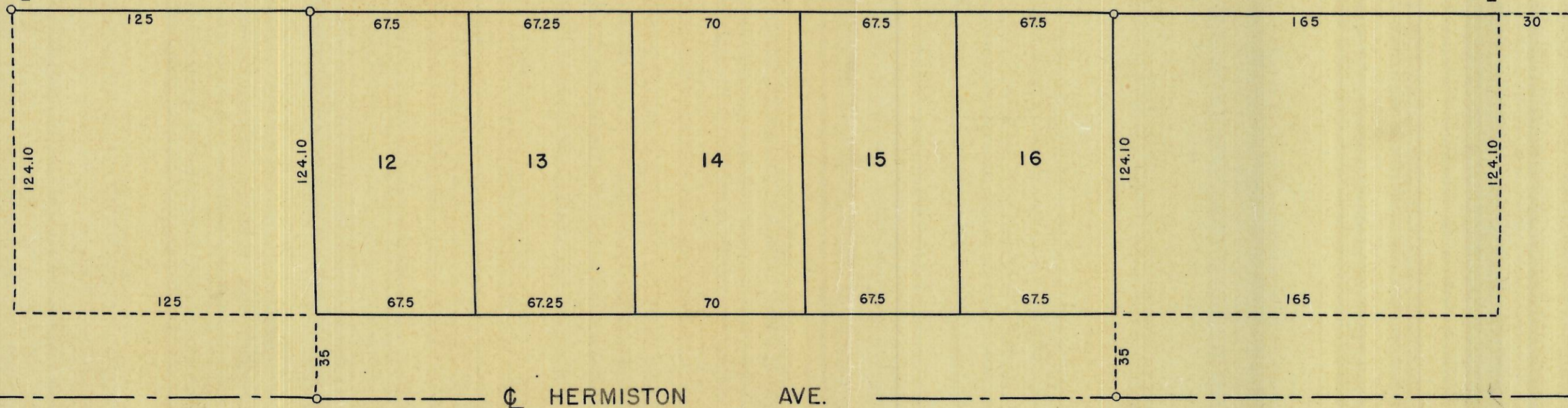
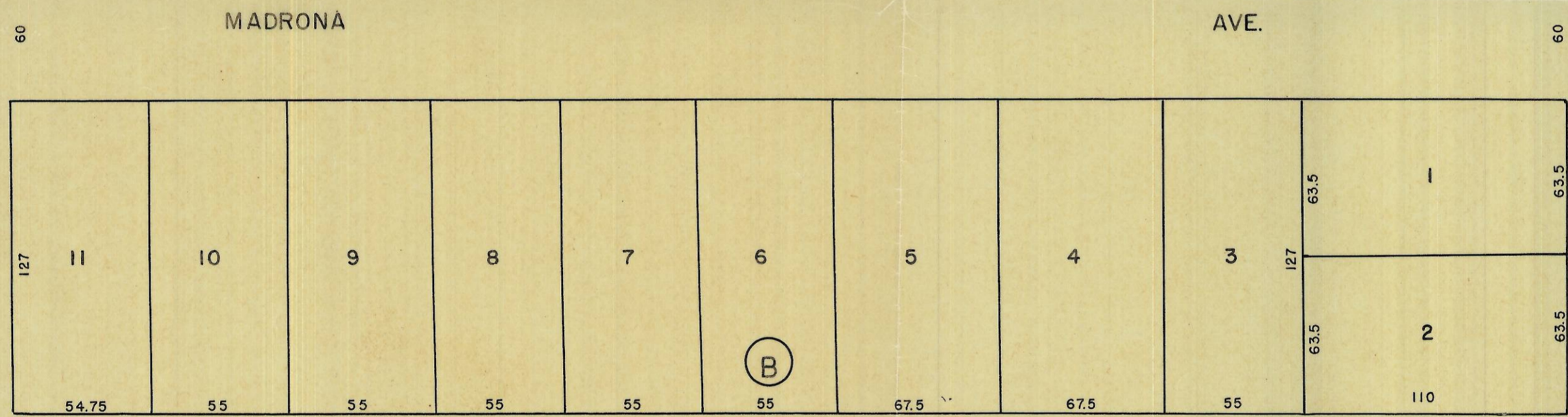
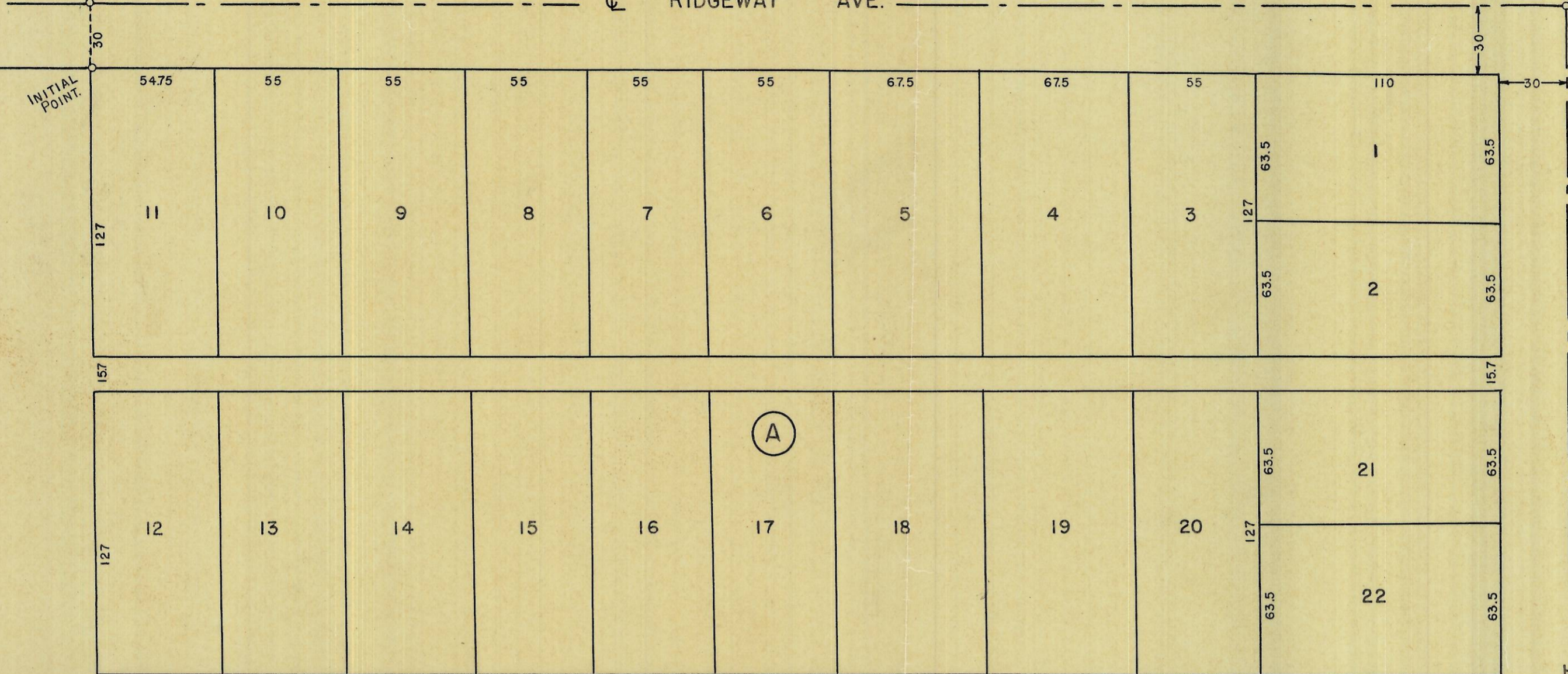


INITIAL POINT OF THIRD ADDITION TO HERMISTON

132

IRON PIN - CENTER OF SEC. 10 T.4 N. R.28 E. W.M.



PRELIMINARY SKETCH.
 OF
 HILL VIEW ADDITION.
 IN
 HERMISTON, OREGON.
 SCAL 1"= 50'
 JULY 16 1947.

4-1325-B

80
G-1325-B
4028 10DB