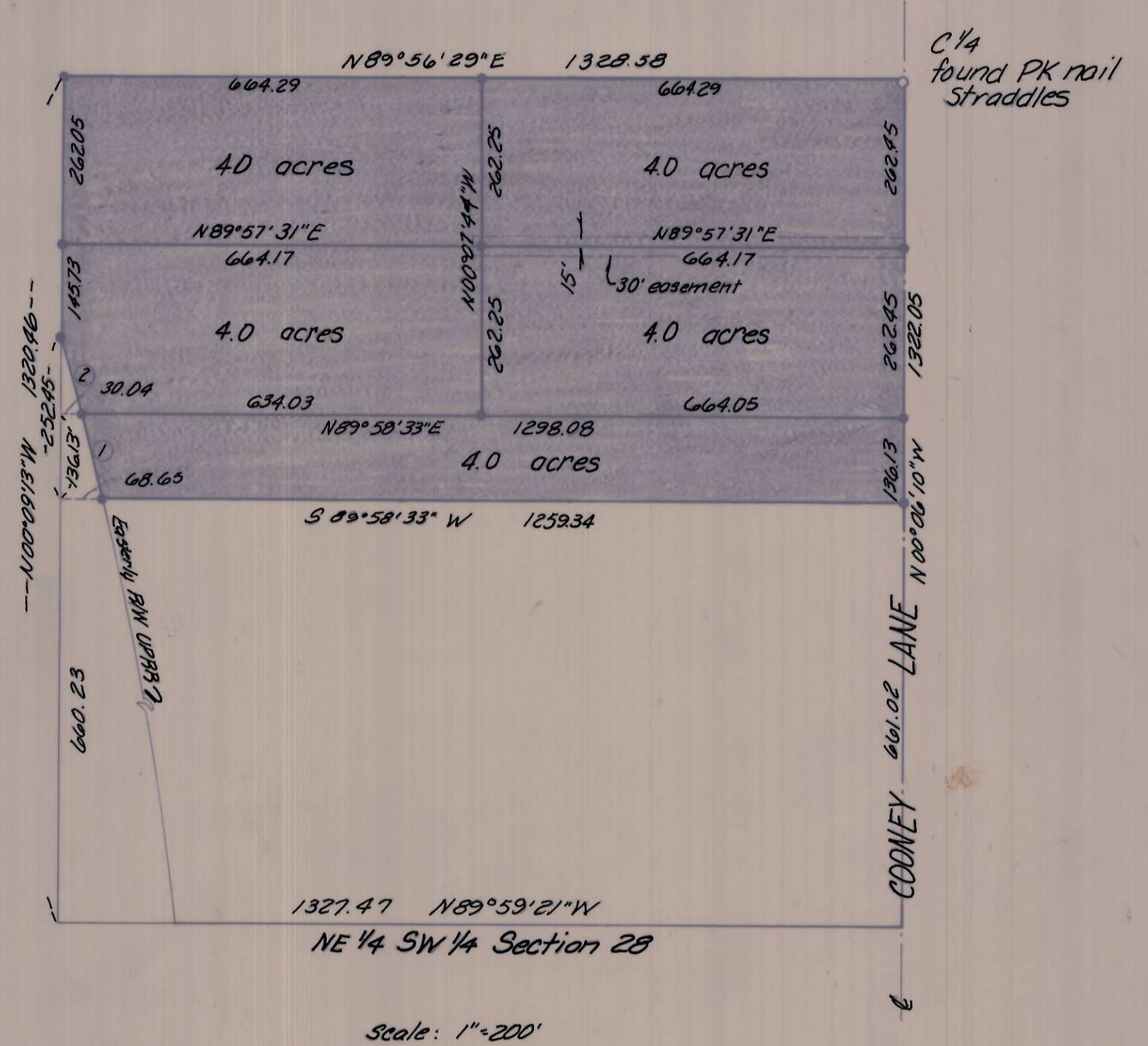
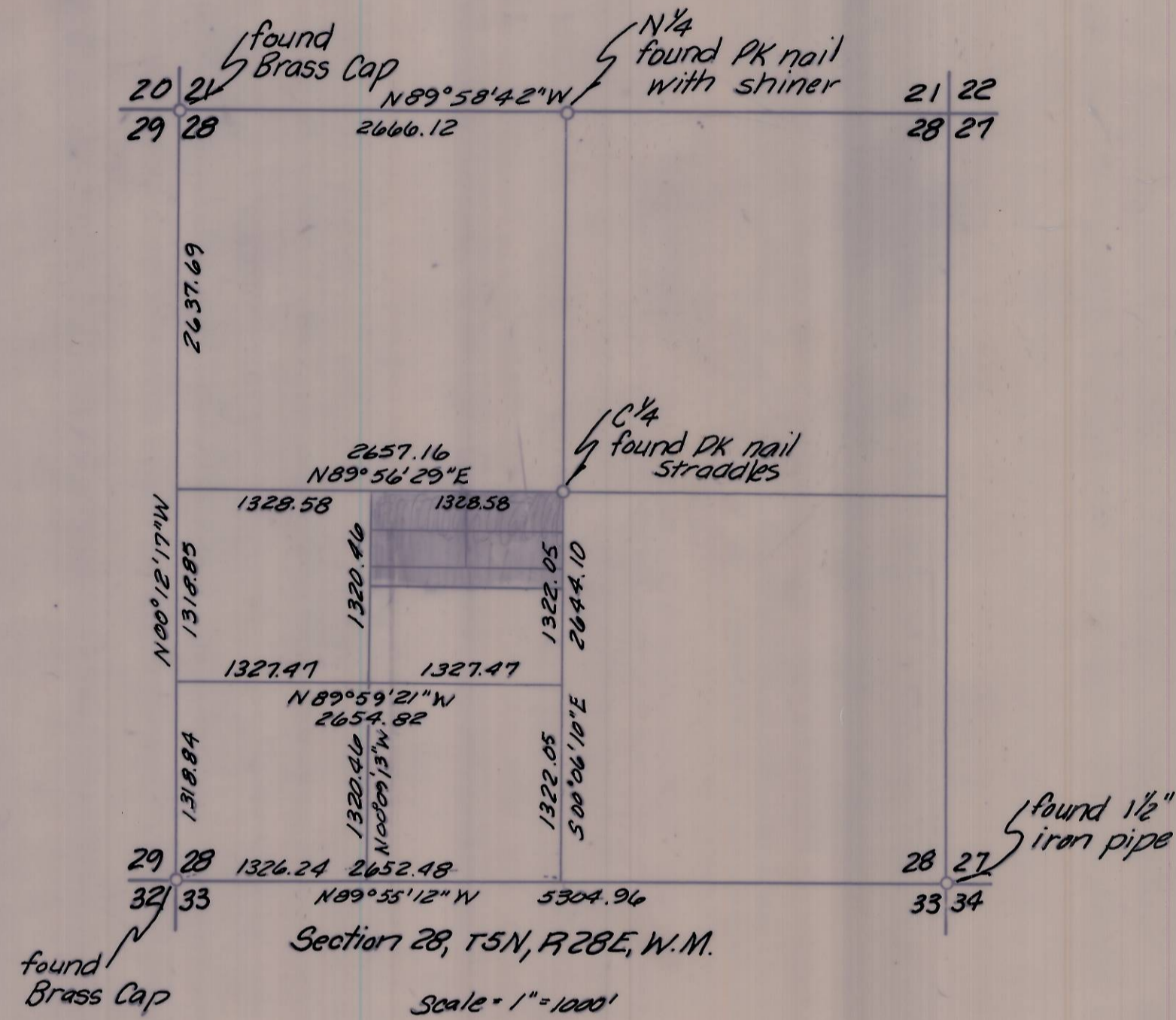


CURVE DATA

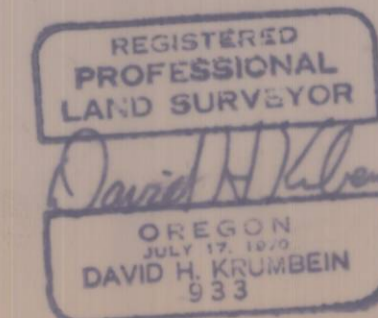
NO.	RADIUS	CH. BEARING	CHORD	ARC
①	5679.58	N15°58'47"W	141.58	141.58
②	5679.58	N14°37'12"W	120.20	120.20



- denotes 5/8" iron pin with aluminum cap set
- denotes monuments found as noted

NOTE:

Bearings are based on the North line of Section 28 being as shown from Wayne Harris Co., Inc. Survey Drawing No. 75-315 A, Umatilla County Survey No. J-100.



RECEIVED BY
 Umatilla County Surveyor
 Date 8-20-79
 Rec'd By G.M.J.
 No. Q-1214-B

Revised Sept 12, 1979 MA
 Revised August 10, 1979 MA

KRUMBEIN ENGINEERING CO.
 ENGINEERS - SURVEYORS - PLANNERS
 221 S. Main, Pendleton, Oregon

Survey for
BOB JOHNSON

NE 1/4, SW 1/4, Sec 28, T5N, R28E Westland Dev.

SCALE	05 STONN
DATE	8-1-79
DRN. BY	M.L.J.
CKD BY	G.F.B.
DRNG. NO.	79-560