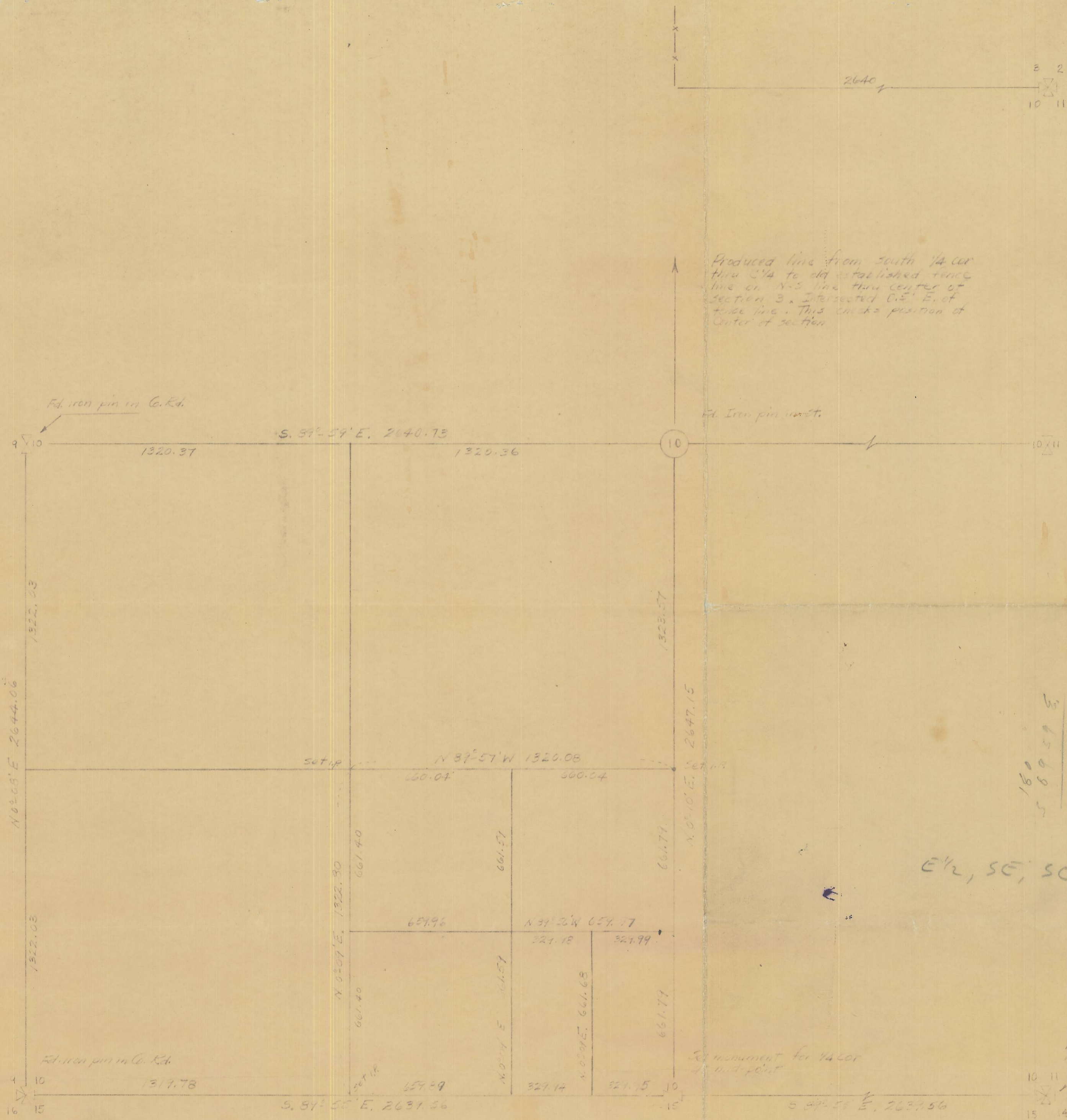


Q-615-B  
4N 2810CC

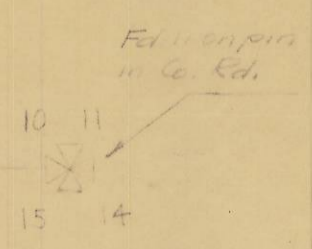
SURVEY of 1/4 sec. 10  
SW<sup>A</sup> section 10

Produced line from south 1/4 cor  
thru C/4 to old established fence  
line on N-S line thru center of  
section 3. Intersected C/4 E. of  
fence line. This checks position of  
center of section.



160  
5 89 59 5  
50.01  
150.00  
200.00

E 1/2, SE, SW



STRANIX & OFNER	
ENGINEERS	
PEN. LETON	OREGON
SURVEY OF SW 1/4, SEC. 10	
T4N, R28E, WM. 661	
DRAWN BY J.T.J.	
DATE: 5-24-49	

10-101

STRANIX AND OFNER  
ENGINEERS  
PENDLETON, OREGON  
PHONE 492

June 23, 1949

Mr. Frank B. Hayes  
County Engineer  
Umatilla County  
Pendleton, Oregon

Dear Sir:

The following is an abstract of the field notes of the survey made to establish the boundary lines of the J. C. Nye property in the SE $\frac{1}{4}$ , SW $\frac{1}{4}$ , section 10, T.4 N., R28 E., W.M.

Located the following corners: The SW corner, sec. 10, an iron pin in the Co. Rd. The SE corner, sec. 10, an iron pipe in the Co. Rd. The East  $\frac{1}{4}$  cor., section 10, an OSHD monument. The West  $\frac{1}{4}$  corner, section 10, an iron pin in the Co. Rd. The center of section 10, an iron pin in the center of Ridgeway Ave.

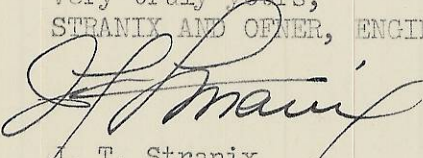
Then proceeded to re-establish the South  $\frac{1}{4}$  corner of section 10, at the mid-point between the SE and SW corners. Set a concrete monument in the Co. Rd.

In order to check the position of the pin found at the center of section a search was made for the North  $\frac{1}{4}$  corner. No monument was found. However, a fence line running through the center of section three is recognized as by local people. To check the position of the fence, located the NE corner of section 10 and chained west to the fence line a distance of 2640 ft. This checks the position of the fence line. Then ran from the South  $\frac{1}{4}$  corner, through the center of section and intersected the fence line 0.5 east of the center of the most southerly fence post. With this verification the pin at the center of section was used.

Then measured the four sides of the SW $\frac{1}{4}$  and established the exterior 1/16 corners. Then ran lines from the exterior 1/16 corners and established the center of the SW $\frac{1}{4}$  of section 10.

Then measured the four sides of the SW $\frac{1}{4}$  and established the exterior 1/64 corners. Then ran lines from the exterior 1/64 corners and established the center of the SE $\frac{1}{4}$ , SW $\frac{1}{4}$ , section 10. Dimensions are shown on the accompanying plat.

Very truly yours,  
STRANIX AND OFNER, ENGINEERS,

  
J. T. Stranix