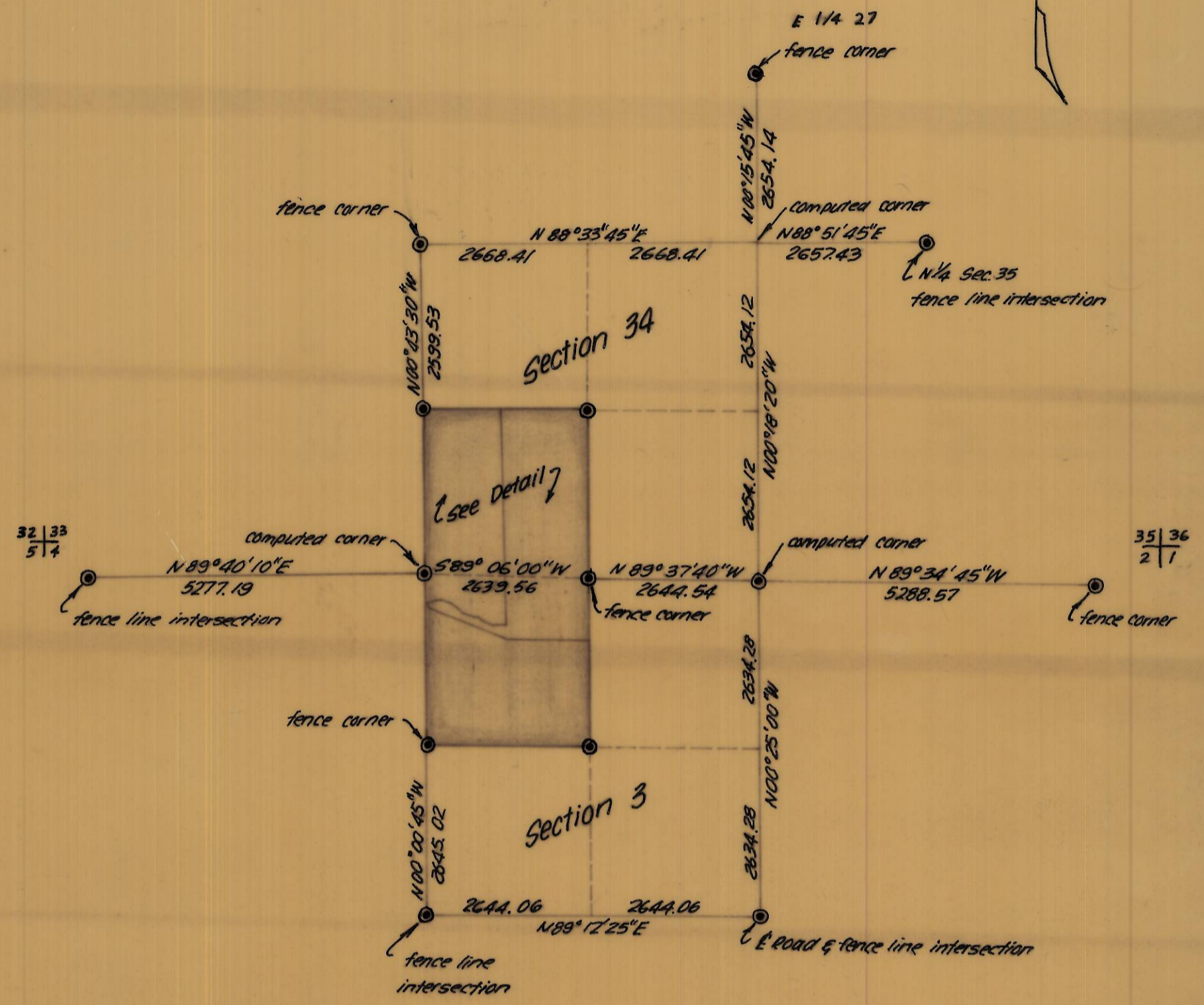


E. of draw

1.	N 75° 01' 00" E	78.88
2.	S 86° 22' 40" E	109.30
3.	S 76° 40' 55" E	75.71
4.	S 79° 34' 55" E	76.32
5.	S 57° 43' 20" E	184.96
6.	S 65° 19' 10" E	144.57
7.	S 79° 05' 30" E	42.63
8.	S 66° 55' 50" E	197.56
9.	S 80° 44' 00" E	44.43
10.	S 53° 31' 40" E	70.88
11.	S 87° 59' 45" E	170.69



REGISTERED PROFESSIONAL LAND SURVEYOR
David H. Krumben
OREGON
DAVID H. KRUMBEIN
933

KRUMBEIN ENGINEERING CO.
ENGINEERS - SURVEYORS - PLANNERS
216 S.E. 1st, Pendleton, Oregon

Survey for Timmermann's
S.W. 1/4 Section 34, T4N, R31E W.M.
N.W. 1/4 Section 3, T3N, R31E W.M.

SCALE
As Shown
DATE
Nov. 8, 1976
DRN. BY
R.L.P.
CKD. BY
D.H.K.
DRNG. NO.
76-586