

TRANSIT STATION NO. 1 =
 S. 20°34'10" W, 1471.46 H.
 FROM N.E. COR. SEC. 34.
 JULY 2, 1976
 LATITUDE 45°41'04"
 DECLINATION 22°59'27" N.
 VERTICAL ANGLE 49°39'19"
 MEAN DECLINATION 21° E

TRANSIT STATION NO. 31 =
 S. 83°31'07" W, 394.10 H.
 FROM SE COR SW4 SEC. 32
 JULY 14, 1976
 LATITUDE 45°46'26"
 DECLINATION 21°35'14" N.
 VERTICAL ANGLE 44°54'26"
 MEAN DECLINATION 21° E

TRANSIT STATION NO. 51 =
 N. 78°51'01" W, 351.07 H.
 FROM N.E. COR. SEC. 27
 JULY 2, 1976
 LATITUDE 45°48'12"
 DECLINATION 22°59'34" N.
 VERTICAL ANGLE 43°08'16"
 MEAN DECLINATION 21° E

ENGINEER'S STATEMENT

I, JAMES D. HANLEY, A REGISTERED ENGINEER IN THE STATE OF OREGON, HEREBY CERTIFY THAT THIS PLAT AND THE NOTES HEREON, OR ATTACHED, ARE A CORRECT REPRESENTATION OF A SURVEY PERFORMED BY ME DURING JULY, 1976, FOR THE U.S. FOREST SERVICE, IN ACCORDANCE WITH THE STATUTES OF THE STATE OF OREGON AND WITH THE ARTICLES OF MY CONTRACT.

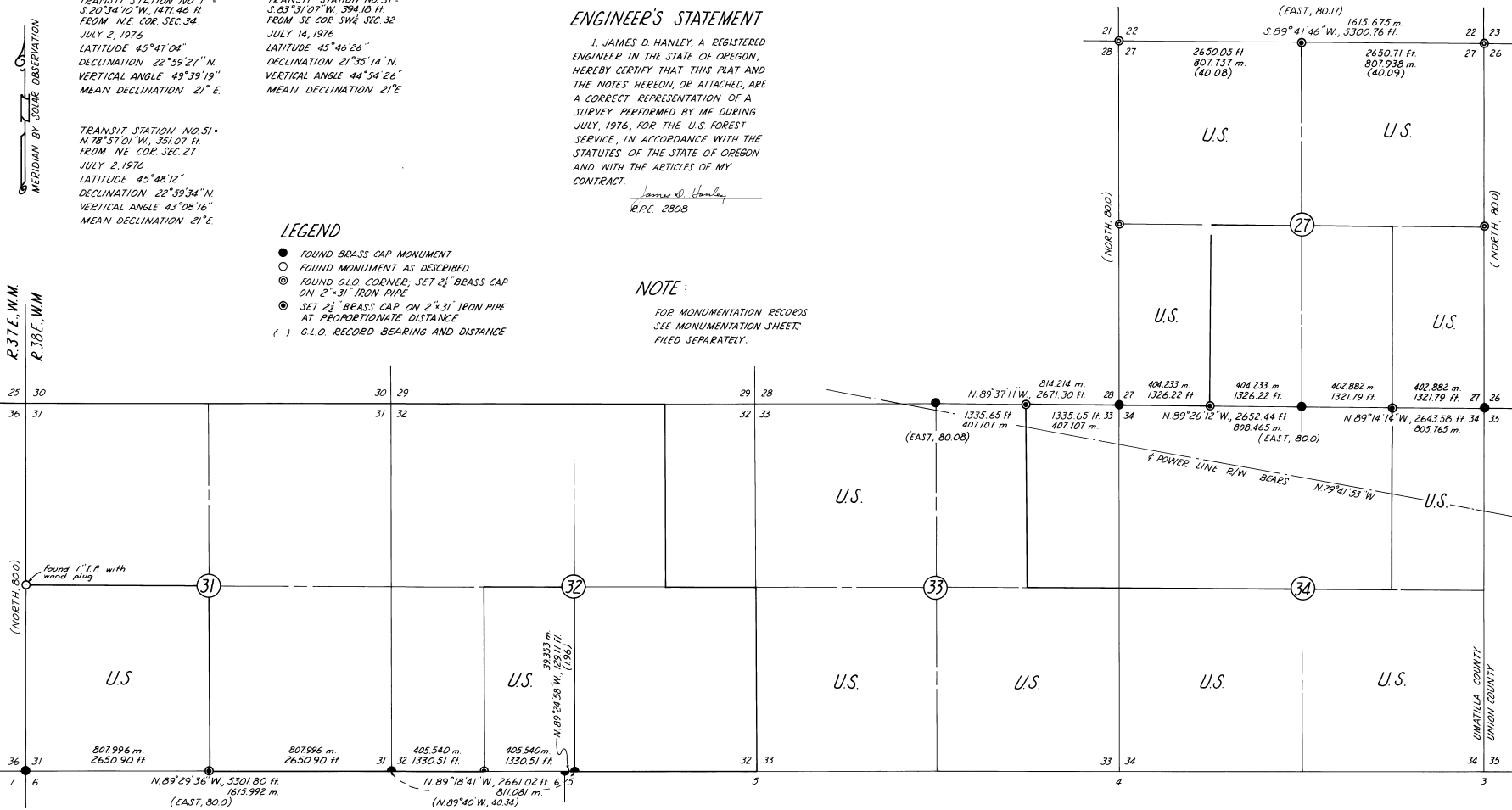
James D. Hanley
 R.P.E. 2808

LEGEND

- FOUND BRASS CAP MONUMENT
- FOUND MONUMENT AS DESCRIBED
- ⊙ FOUND G.L.O. CORNER, SET 2 1/2" BRASS CAP ON 2" x 31" IRON PIPE
- ⊙ SET 2 1/2" BRASS CAP ON 2" x 31" IRON PIPE AT PROPORTIONATE DISTANCE
- () G.L.O. RECORDED BEARING AND DISTANCE

NOTE:

FOR MONUMENTATION RECORDS SEE MONUMENTATION SHEETS FILED SEPARATELY.



DESCRIPTIONS OF U.S. GOVERNMENT LANDS

- | | | | | |
|-------------------------------------------------------------------------------|---------------------------------|---------------------------------------------------|-----------------------------------------------------------------------------|---------------------------------------------------------------|
| SECTION 27
ALL NE 1/4
E 1/2 SE 1/4
W 1/2 SW 1/4
ALL NW 1/4 | SECTION 31
ALL SW 1/4 | SECTION 32
E 1/2 NE 1/4
E 1/2 SW 1/4 | SECTION 33
W 1/2 NE 1/4
ALL SE 1/4
ALL SW 1/4
ALL NW 1/4 | SECTION 34
E 1/2 NE 1/4
ALL SE 1/4
ALL SW 1/4 |
|-------------------------------------------------------------------------------|---------------------------------|---------------------------------------------------|-----------------------------------------------------------------------------|---------------------------------------------------------------|

PLAT OF SURVEY
 FOR U.S. FOREST SERVICE
 CONTRACT NO. 004971N

SCALE 1" = 1000 H.
 JULY 2-29, 1976



R. 37 E., 1/4 M.
 R. 38 E., 1/4 M.

(NORTH, 800)

T. 4 N.,
 T. 3 N.

(EAST, 80.17)
 S. 89° 41' 46" W, 5300.76 H.
 2650.05 H. 807.737 H. (40.08)
 2650.71 H. 807.938 H. (40.09)
 1615.675 m
 3300.76 H.
 814.214 m
 2671.30 H.
 404.233 m
 1326.22 H.
 404.233 m
 1326.22 H.
 402.882 m
 1321.79 H.
 402.882 m
 1321.79 H.
 1335.65 H. 407.107 m
 1335.65 H. 407.107 m
 N. 89° 26' 12" W, 2652.44 H. 808.465 m (EAST, 80.0)
 N. 89° 14' 14" W, 2643.55 H. 805.765 m
 N. 89° 37' 11" W, 814.214 m
 1335.65 H. 407.107 m (EAST, 80.08)
 1335.65 H. 407.107 m
 N. 89° 26' 12" W, 2652.44 H. 808.465 m (EAST, 80.0)
 N. 89° 14' 14" W, 2643.55 H. 805.765 m
 N. 79° 41' 53" W
 E POWER LINE R/W BEARS
 (NORTH, 800)
 (NORTH, 800)
 DIMATILLA COUNTY UNION COUNTY