

CERTIFICATION

I, G. DENNIS EDWARDS A REGISTERED PROFESSIONAL LAND SURVEYOR HEREBY CERTIFY THAT ON 7/9/75 A SURVEY WAS STARTED AND COMPLETED ON 7/14/75 OF THE LANDS SHOWN HEREON BY ME OR UNDER MY DIRECTION THAT THE PROPERTY CORNERS ARE MARKED AS SHOWN, AND THAT THIS MAP IS A TRUE AND ACCURATE REPRESENTATION OF SAID SURVEY.

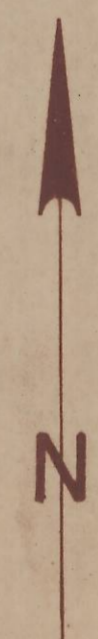
DESCRIPTION

THE EAST 1/2 OF THE NE. 1/4 OF THE NW. 1/4 AND THE NW. 1/4 OF THE NE. 1/4 OF THE NW. 1/4, SEC. 34, T. 5N., R. 28E., W.M., UMATILLA COUNTY.

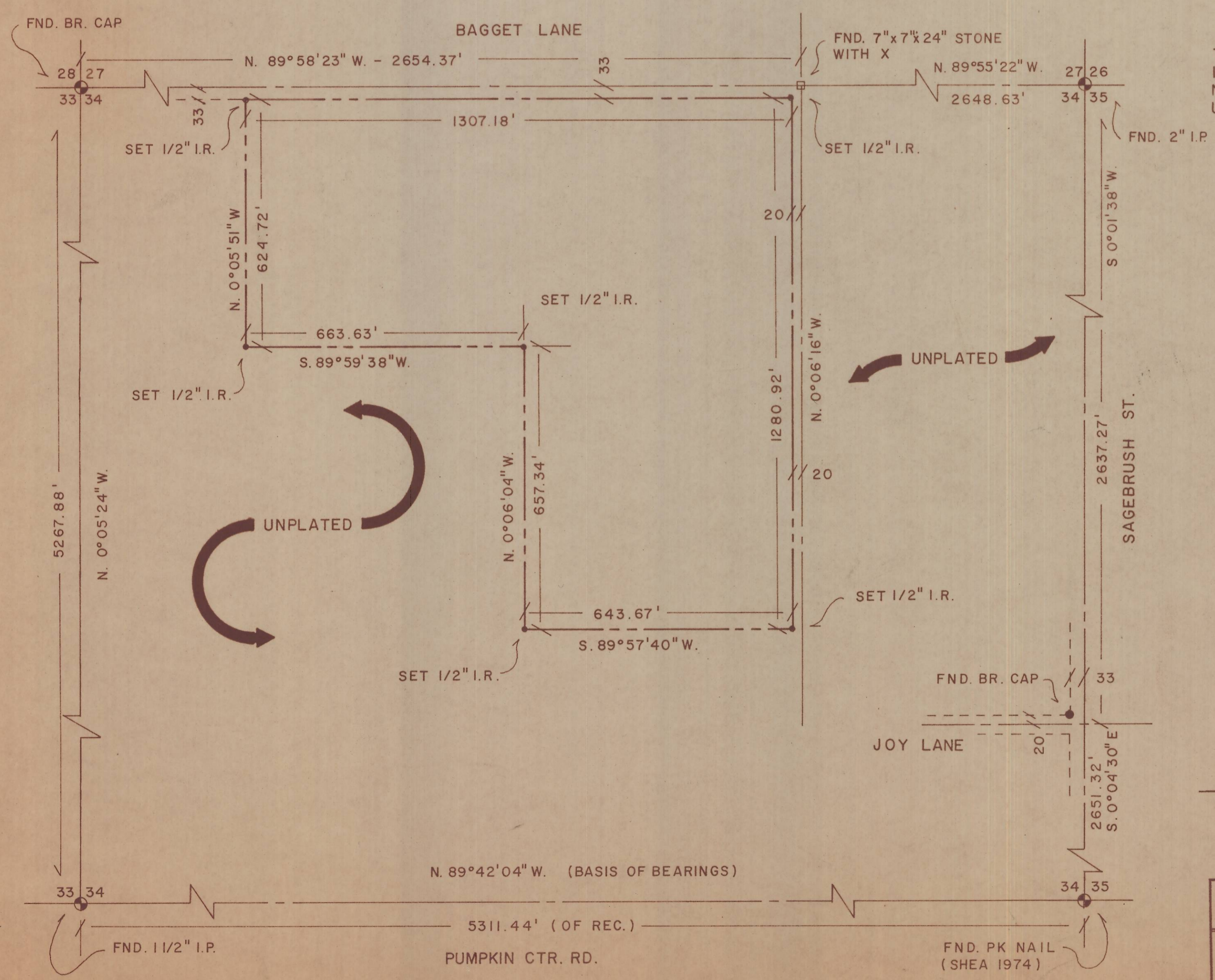
REGISTERED PROFESSIONAL LAND SURVEYOR
G. Dennis Edwards
 OREGON
 JULY 28, 1971
 G. DENNIS EDWARDS

LEGEND

- SECTION OR CENTER LINE
- - - RIGHT OF WAY LINE
- PROPERTY LINE
- 1/2" IRON BAR
- 7x7x24" STONE
- ⊙ SECTION CORNER
- BRASS CAP



SCALE: 1" = 200'



SURVEY FOR		UNIVERSAL REALTY INC. (KENNEY DACK)	
GASCHLER & ASSOCIATES			
ONTARIO, OREGON		HERMISTON, OREGON	
DESIGNED BY:	DRAWN BY: <i>L.E.</i>	APPROVED BY:	
DATE: 7/16/75	DRAWING NO. B - 2	BK	PG
SHEET 1 OF 1	JOB NO. HSO - 0475	REVISED:	