

RIDGEWAY AVENUE

BASIS OF BEARING
C.S. 07-298-B (N89°47'10"W) 2640.34

RECORD OF SURVEY

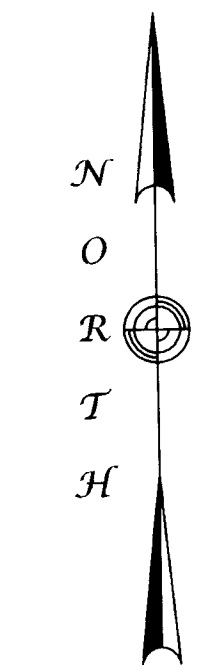
LOTS 3 AND 4, BLOCK "A",
THIRD ADDITION TO HERMISTON

NORTHEAST 1/4 OF SOUTHWEST 1/4,
SECTION 10, TWN. 4 N., RA. 28 E., W.M.

CITY OF HERMISTON
UMATILLA COUNTY, OREGON

W1/4
SEC. 10
B.C. (BROKEN)
IN MON. CASE

N.W. 11TH ST.



GLEN MEADOWS ADDITION

N0°25'30"E 601.58
(N0°24'09"E 601.58) [600.00]

DEED 2022-7350528

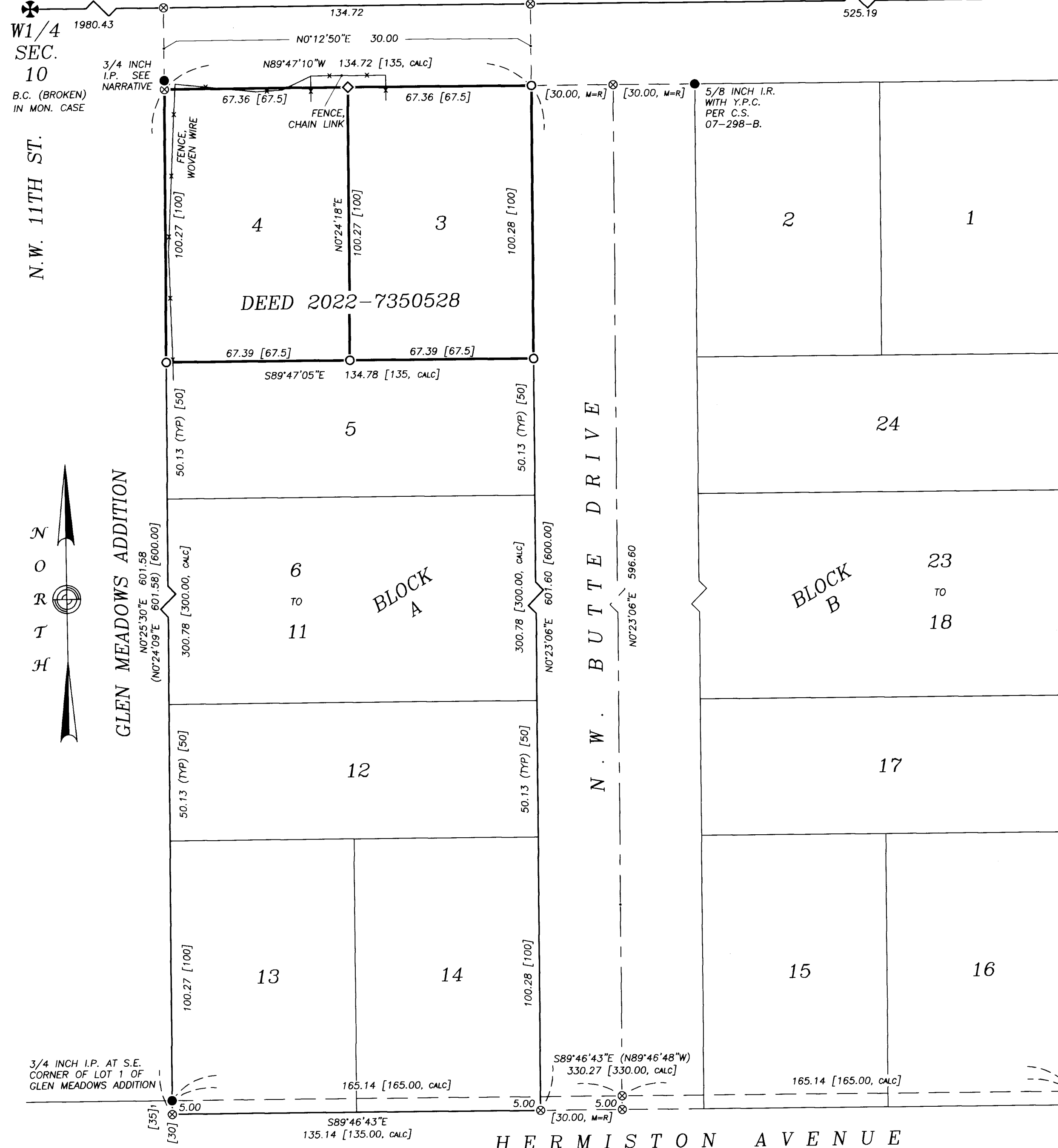
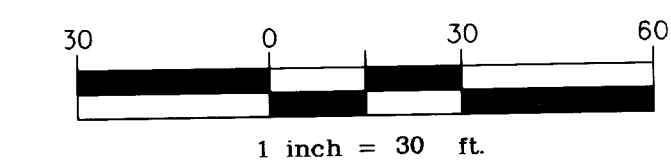
BLOCK A

BLOCK B

BUTTE DRIVE

HERMISTON AVENUE

3/4 INCH I.P. AT S.E.
CORNER OF LOT 1 OF
GLEN MEADOWS ADDITION



C1/4
1/2 INCH I.R. AT
INTERSECTION WITH
N.W. 7TH ST.

REFERENCES

- UMATILLA COUNTY DEED 2022-7350528.
- SUBDIVISION PLATS
THIRD ADDITION TO HERMISTON (1946)
- GLEN MEADOWS ADDITION (1949)
- SURVEYS
07-298-B
S-034-AX (1981)

LEGEND

- Public Land Survey Corner, as noted
- Monument of record, as noted
- Set, a 5/8 x 30 inch iron rebar with lt. blue plastic cap mkd: "WALLOWA ASSOCIATES".
- Set, in concrete pad, a 1 inch concrete nail with 3/4 inch brass washer mkd: "LS 2872".
- Calculated position, monument neither found nor set
- Property lines
- Fences, as noted
- [xxx] DIMENSION PER "PLAT OF THIRD ADDITION TO HERMISTON"
- [xxx] DIMENSION PER "GLEN MEADOWS ADDITION TO THE CITY OF HERMISTON"
- (xxx) DIMENSION PER C.S. 07-298-B
- (xxx, M=R) MEASURED EQUALS RECORD PER DOCUMENT SHOWN
- [xxx, calc] CALCULATED DISTANCE PER RECORD SHOWN
- I.R. IRON ROD
- I.P. IRON PIPE
- B.C. BRASS CAP
- Y.P.C. YELLOW PLASTIC CAP
- C.S. COUNTY SURVEY
- TYP DISTANCE, TYPICAL

NARRATIVE

THIS SURVEY WAS PERFORMED TO REESTABLISH THE CORNERS OF UMATILLA COUNTY DEED 2022-7350528, BEING LOTS 3 AND 4 OF BLOCK "A" OF THIRD ADDITION TO HERMISTON. THE RESOLUTION OF THE BLOCK "A" LOT LINES IS BASED UPON THE EDWARDS SURVEY C.S. 07-298-B.

A 3/4 INCH IRON PIPE WAS RECOVERED AT THE NORTHWEST CORNER OF LOT 4. IT HAS BEEN THE ONLY MONUMENT RECOVERED FROM THE SAID SUBDIVISION. THE PIPE IS 0.4 NORTH OF THE SOUTH RIGHT-OF-WAY OF RIDGEWAY AVENUE. A SECOND 3/4 INCH IRON PIPE WAS RECOVERED AT THE SOUTHEAST CORNER OF GLEN MEADOWS ADDITION. THESE TWO (2) PIPES WERE HELD AS THE WEST LINE OF BLOCK "A".

THE SOUTH LINES OF THE THIRD ADDITION TO HERMISTON IS 30.00 FEET NORTH OF THE CENTERLINE OF HERMISTON AVENUE. THE PROPERTIES ADJACENT ON BOTH THE EAST AND WEST SIDES OF THE SAME ARE 35.00 FEET FROM CENTERLINE.

THE SOUTHWEST CORNER OF LOT 13, BLOCK "A" WAS CALCULATED AT AN EXTENSION OF THE WEST LINE DETERMINED BY THE ABOVE-MENTIONED PIPES. IT IS 5.00 FEET SOUTH OF THE SECOND PIPE.

THE NORTHERLY CENTERLINE OF BUTTE DRIVE WAS DETERMINED AT A 30.00 OFFSET FROM THE IRON ROD RECOVERED AT THE NORTHWEST CORNER OF LOT 2, BLOCK "B". A POINT ON THE SOUTHERLY CENTERLINE WAS DETERMINED AT THE MIDPOINT OF THE LINE BETWEEN PIPE #2 AND A CALCULATED POINT ON THE 35.00 FOOT RIGHT-OF-WAY, ALONG THE EAST LINE OF LOT 16, AS MEASURED FROM THE SHOWN RAILROAD SPIKE PER SURVEYS 07-298-B AND S-034-AX.

THE NORTH, EAST AND SOUTH LINES OF BLOCK "A" WERE DETERMINED AT 30.00 OFFSETS FROM THE CENTERLINES OF EACH RIDGEWAY AVENUE, BUTTE DRIVE AND HERMISTON AVENUE. ALL LOT CORNERS OF BLOCK "A" WERE DETERMINED PROPORTIONALLY.

THIS SURVEY WAS ACCOMPLISHED WITH TRIMBLE R-B G.P.S. RECEIVERS AND A NIKON DTM-522 THEODOLITE WITH ELECTRONIC DISTANCE MEASURING CAPABILITY.

RECORD OF SURVEY		
FOR: DANIEL LITTCHE-HEALY		
LOCATED WITHIN NORTHEAST QUARTER OF SOUTHWEST QUARTER, SECTION 10 TOWNSHIP 4 NORTH, RANGE 28 EAST, W.M. UMATILLA COUNTY, OREGON		
Wallowa Associates 303 S.E. Alamo Street Enterprise, Oregon 97828 (541) 426-9049		
SCALE 1 IN. = 30 FT.	SHEET No. 1 OF 1	DATE OF SURVEY Beginning: 9 APR 24 Ending: 10 APR 24
DRAWN BY R J L	CHECKED K L P	PROJECT No. D243-01 / 3422dlh

RECEIVED BY
Umatilla County Surveyor
Date: 6/5/24
Rec'd By: CT
No.: 24-054-B

REGISTERED
PROFESSIONAL
LAND SURVEYOR

OREGON
JULY 14, 1998
RODNEY J. LEWIS
2872
EXPIRES 12-31-24