

RECORD OF SURVEY

SET & FOUND MONUMENT NOTES:

- ▲ A NORTHWEST BUILDING CORNER BEARS N 66°18'16" E, 0.2' & N 23°35'50" W, 0.3' FROM SET MONUMENT.
- ▲ B NORTHERLY CORNER OF BUILDING WALL JOG BEARS N 66°23'18" E, 0.2' & N 23°35'46" W, 0.2' FROM CORNER POINT. SET WITNESS CORNER N 23°35'46" W, 1.56' FROM CORNER TO AVOID BUILDING. THE WITNESS CORNER IS A 4 1/2" "MAGSPIKE" AND 1 1/2" WASHER STAMPED "PLS 1106", SET IN ASPHALT.
- ▲ C FOUND 1" O.D. PIPE N 53°07' E, 0.4' FROM SET MONUMENT. ORIGIN OF PIPE IS UNKNOWN.
- ▲ D SET IN ASPHALT.
- ▲ E SET IN CONCRETE SIDEWALK.

SHORT LINE TABLE

NO.	BEARING	DISTANCE	RECORD
L1	S 23°35'46" E	10.56'	
L2	N 23°35'41" W	10.71'	(10.71')
L3	N 66°18'16" E	30.01'	
L4	N 66°18'16" E	30.00'	
L5	S 66°18'16" W	30.00'	
L6	N 66°18'16" E	30.00'	

SCALE: 1 INCH=300 FEET



SURVEY CONTROL DIAGRAM

SURVEYOR'S CERTIFICATE:

THIS SURVEY WAS MADE AT THE REQUEST OF THE SHGM PROPERTIES, LLC, TO RECOVER OR MONUMENT THE EXTERIOR BOUNDARIES OF THEIR LAND PURCHASE DESCRIBED IN INST. NO. 2021-7310550, UMATILLA COUNTY OFFICE OF RECORDS.

TO MAKE THE SURVEY, I LOCATED AND TIED THE CONTROLLING MONUMENTS SHOWN ON THE SURVEY CONTROL DIAGRAM ON THIS RECORD OF SURVEY, I THEN DETERMINED THE EXTERIOR BOUNDARY AND INTERIOR LOTS IN BLOCK 112 BY PROPORTIONAL METHODS.

THIS SURVEY WAS MADE USING A LEICA GEODETIC GPS RECEIVER CONNECTED TO THE OREGON REAL TIME NETWORK. MEASUREMENTS WERE GATHERED ON THE OREGON STATE PLANE COORDINATE SYSTEM AND ROTATED AND SCALED FROM GRID VALUES TO TRUE BEARINGS AND GROUND DISTANCES USING THE ROTATION AND COMBINED SCALE AND ELEVATION FACTOR NOTED ON THE "BASIS OF BEARINGS" STATEMENT ON THIS MAP. CONTROL CORNER TIES AND CORNER MONUMENTS SET WERE VERIFIED BY REDUNDANT OBSERVATIONS. NEW MONUMENTS WERE ESTABLISHED FROM SURVEY CONTROL POINTS WITH A TRIMBLE S6 ROBOT TOTAL STATION AND VERIFIED BY REDUNDANT MEASUREMENTS.

RECEIVED BY
Umatilla County Surveyor
Date: 1/24/22
Rec'd By: CT
No.: 22-004-R

LEGEND

- - SET 5/8 BY 24 INCH REBAR WITH RED PLASTIC CAP MARKED "ORPLS 1106 WA PLS 17372".
- ⊙ - SET 1 1/2 INCH STAINLESS STEEL WASHER STAMPED "PLS 1106" ATTACHED TO 4 1/2 INCH "MAGSPIKE".
- ⊕ - FOUND BRASS PIN IN MONUMENT CASE BY CITY OF PENDLETON.
- ⊗ - FOUND BRASS CAP IN MONUMENT CASE BY CITY OF PENDLETON.
- - FOUND MONUMENT AS NOTED.
- x - MAPPING POINT ONLY, NOT SET OR FOUND.
- (XOX) - RECORD DIMENSION FROM PLAT OF RESERVE ADDITION, A.K.A. RESERVATION ADDITION.
- L1 - LINE TOO SHORT TO ANNOTATE, SEE SHORT LINE TABLE.

REGISTERED
PROFESSIONAL
LAND SURVEYOR

Will R. Wells

OREGON
JULY 22, 1977
WILLIAM R. WELLS
1106
RENEWS 6/30/22

WELLS SURVEYING
200 SE HAILEY SUITE 108
P.O. BOX 1696
PENDLETON, OR 97801
PHONE: (541) 276-6362

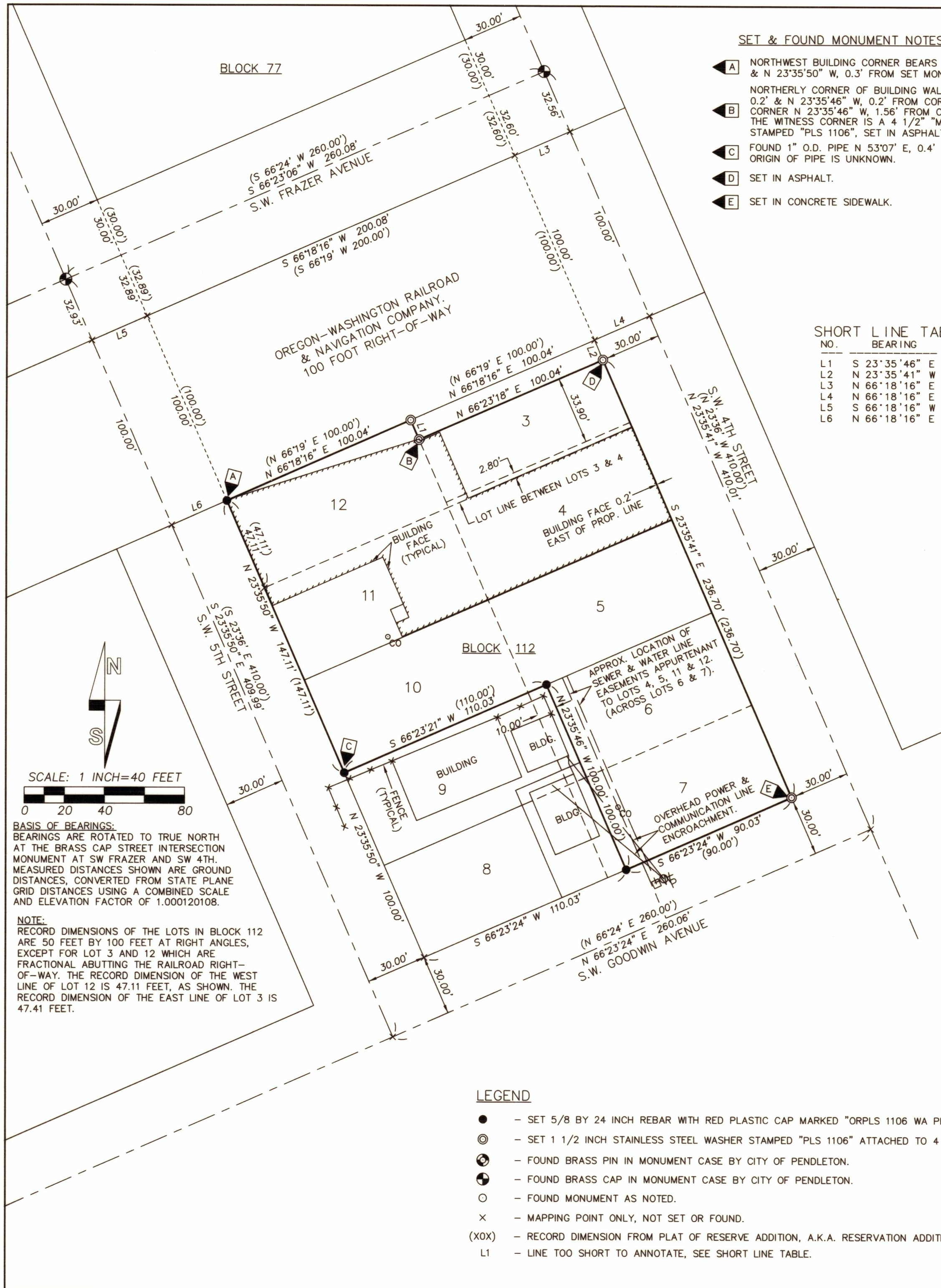
DATE: 01/22 DR. BY: WRW
CK. BY: WRW NO: 22-1809

PROJECT: \BLAGROT

SURVEY FOR:
SHGM PROPERTIES, LLC

LOTS 3 THROUGH 7 AND 10 THROUGH 12,
BLOCK 112, RESERVE ADDITION TO
THE TOWN, NOW CITY OF PENDLETON

LOCATED IN THE SE1/4 OF THE NE1/4,
SECTION 10, T2N., R32E., W.M.,
UMATILLA COUNTY, OREGON.



BLOCK 77

OREGON-WASHINGTON RAILROAD
& NAVIGATION COMPANY
100 FOOT RIGHT-OF-WAY

BLOCK 112

APPROX. LOCATION OF
SEWER & WATER LINE
EASEMENTS APPURTENANT
TO LOTS 4, 5, 11 & 12
(ACROSS LOTS 6 & 7).

OVERHEAD POWER &
COMMUNICATION LINE
ENCROACHMENT.

SCALE: 1 INCH=40 FEET

BASIS OF BEARINGS:
BEARINGS ARE ROTATED TO TRUE NORTH
AT THE BRASS CAP STREET INTERSECTION
MONUMENT AT SW FRAZER AND SW 4TH.
MEASURED DISTANCES SHOWN ARE GROUND
DISTANCES, CONVERTED FROM STATE PLANE
GRID DISTANCES USING A COMBINED SCALE
AND ELEVATION FACTOR OF 1.000120108.

NOTE:
RECORD DIMENSIONS OF THE LOTS IN BLOCK 112
ARE 50 FEET BY 100 FEET AT RIGHT ANGLES,
EXCEPT FOR LOT 3 AND 12 WHICH ARE
FRACTIONAL ABUTTING THE RAILROAD RIGHT-
OF-WAY. THE RECORD DIMENSION OF THE WEST
LINE OF LOT 12 IS 47.11 FEET, AS SHOWN. THE
RECORD DIMENSION OF THE EAST LINE OF LOT 3 IS
47.41 FEET.