

S . E . F R A Z E R P L A C E

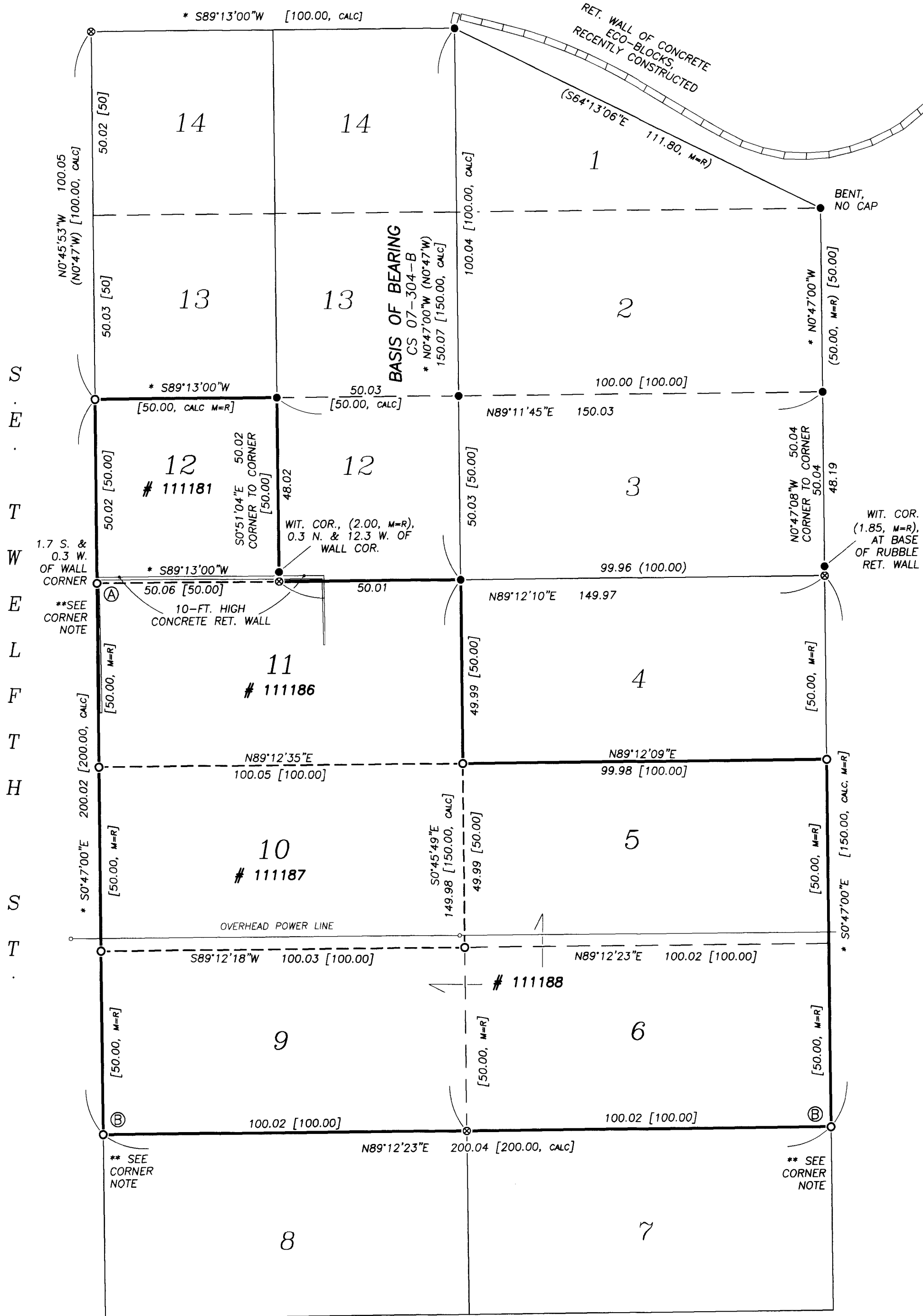
RECORD OF SURVEY

LOTS 5, 6, 9, 10, 11 AND WEST HALF OF LOT 12

BLOCK 123

RESERVATION ADDITION (PLATTED AS RESERVE ADDITION) TO THE TOWN (NOW CITY OF) PENDLETON,

UMATILLA COUNTY, OREGON



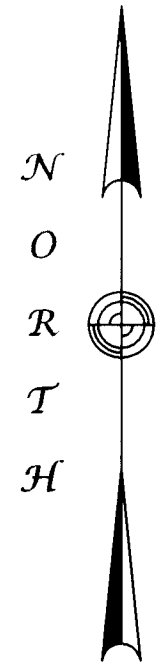
S
E
T
H
I
R
T
E
E
N
T
H
S
T
H

LEGEND

- FOUND, 5/8 INCH IRON REBAR WITH YELLOW PLASTIC CAP MKD: ORPLS 43406, PER CS 07-304-B; UNLESS OTHERWISE NOTED.
- SET 5/8 X 30 INCH IRON REBAR WITH LT. BLUE PLASTIC CAP MKD: "WALLOWA ASSOC."
- ⊗ CALCULATED POSITION, MONUMENT NEITHER FOUND NOR SET
- PROPERTY LINES
- - - INTERIOR TAX LOT ACCOUNT LINES
- [XXX.XX] DIMENSION PER RESERVATION ADDITION, (PLATTED AS RESERVE ADDITION)
- [XXX, M=R] MEASURED EQUALS RECORD, PER RESERVATION ADDITION
- [XXX, CALC] CALCULATED DISTANCE, PER RESERVATION ADDITION
- * XX'XX'XX" BEARING EITHER PARALLEL, OR PERPENDICULAR TO THE WEST LINES OF LOTS 1, 2 AND 3 (E. LINES OF LOTS 12, 13 AND 14), PER C.S. 07-304-B
- (XXX.XX) DIMENSION PER CS 07-304-B
- (XXX, M=R) MEASURED EQUALS RECORD, CS 07-304-B
- # XXXXXX ASSESSOR'S ACCOUNT NUMBER
- CS COUNTY SURVEY
- I.R. IRON REBAR
- WIT. COR. WITNESS CORNER
- RET. WALL RETAINING WALL

CORNER NOTES:

- Ⓐ SET A 24-INCH REBAR DUE TO CONCRETE FOOTING OF RETAINING WALL
- Ⓑ FOUND, A 1/2 INCH IRON REBAR (PER CS N-18-A) ALONGSIDE PROPERTY CORNER, LEANING N-NW DUE TO SLOUGHING OF HILLSIDE. THE 1/2 I.R. WAS DRIVEN BENEATH THE SURFACE.



RECEIVED BY
Umatilla County Surveyor
Date: 6/2/21
Rec'd By: CT
No.: 21-060-B

S . E . G O O D W I N A V E .
(U N I M P R O V E D)

NARRATIVE

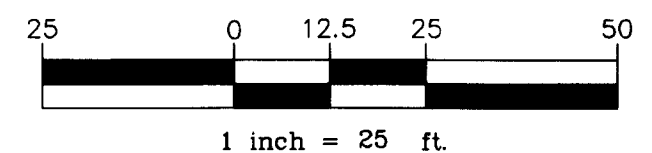
THIS SURVEY WAS PERFORMED AT THE REQUEST LARRY AND JEAN GRAY TO MONUMENT THE LINES OF UMATILLA COUNTY DEED 2020-7030611, BEING LOTS 5, 6, 9, 10 11 AND THE WEST HALF OF LOT 12, BLOCK 123 OF RESERVATION ADDITION (PLATTED AS RESERVE ADDITION). THE DEED IS COMPRISED OF FOUR (4) SEPARATE ASSESSOR'S ACCOUNTS OF WHICH THE CORNERS OF EACH WERE MONUMENTED, AS HEREON SHOWN.

THIS SURVEY WAS BASED UPON C.S. 07-304-B, BY ENGLISH. I HELD THE MONUMENTS AND LINE BETWEEN LOTS 1, 2 AND 3; AND LOTS 12, 13 AND 14; TO BE THE REFERENCE BEARING USED BY THIS SURVEY. I REESTABLISHED THE NORTHWEST CORNER OF LOT 12 AT A BEARING PERPENDICULAR TO SAID REFERENCE LINE, AT A CALCULATED PLAT DISTANCE FROM THE FOUND MONUMENT AT THE NORTHWEST CORNER OF THE EAST HALF OF LOT 12. FROM THIS REESTABLISHED CORNER, AND THE SOUTHEAST CORNER OF LOT 3; I PROJECTED THE EAST AND WEST BLOCK LINES OF BLOCK 123 SOUTHERLY TO THE SOUTH LINES OF LOTS 6 AND 9 USING THE REFERENCE BEARING AND PLAT DISTANCES. THE SOUTHERLY CORNER BETWEEN LOTS 6 AND 9 WAS SET AT THE MIDPOINT OF THEIR SOUTH LINES.

THIS WORK WAS PERFORMED USING TRIMBLE R-8 G.P.S. RECEIVERS, A TRIMBLE TSC-2 DATA CONTROLLER AND A NIKON DTM-522 THEODOLITE WITH ELECTRONIC DISTANCE MEASURING CAPABILITY.

REFERENCES

- SURVEYS
- RESERVATION ADDITION (PLATTED AS)
- RESERVE ADDITION TO THE TOWN OF PENDLETON, UMATILLA CO. OREGON
- CS 07-304-B
- UMATILLA COUNTY DEED 2020-7030611



RECORD OF SURVEY		
FOR: LARRY AND JEAN GRAY		
LOCATED WITHIN NW1/4 OF NE1/4, SECTION 11, TOWNSHIP 2 NORTH, RANGE 32 EAST, W.M. UMATILLA COUNTY, OREGON		
Wallowa Associates 303 S.E. Alamo Street Enterprise, Oregon 97828 (541) 426-9049		
SCALE 1 INCH = 25 FT.	SHEET No. 1 OF 1	DATE OF SURVEY Beginning: 23 APR 21 Ending: 28 APR 21
DRAWN BY R J L	CHECKED K L P	PROJECT No. D215-01 / 3132LJG

REGISTERED PROFESSIONAL LAND SURVEYOR
Rodney J. Lewis
OREGON
JULY 14, 1998
RODNEY J. LEWIS
2872
EXPIRES 12-31-22