

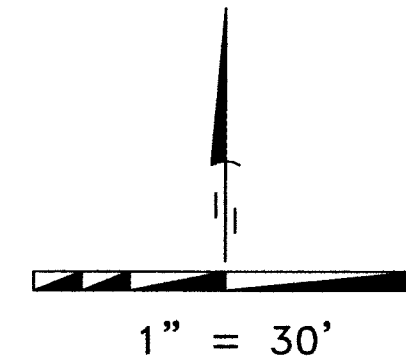
RECORD OF SURVEY

LOCATED IN THE NORTHWEST 1/4 OF SECTION 5,
TOWNSHIP 3 NORTH, RANGE 29, EAST OF THE
WILLAMETTE MERIDIAN, CITY OF STANFIELD,
UMATILLA COUNTY, OREGON.

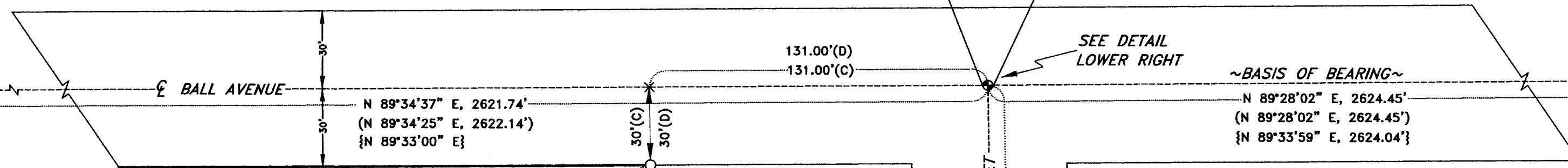
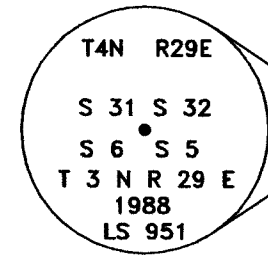
CLIENT: **JASON HAIGH**
1395 SW 13TH STREET
HERMISTON, OREGON, 97838

FND: 2" ALUM. CAP

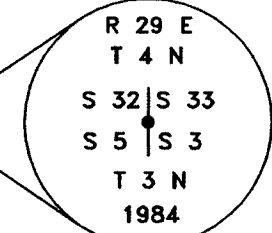
RECEIVED BY
Umatilla County Surveyor
Date: 5/16/2017
Rec'd By: Jay Leht
No.: 17-063-B



FND: 2 1/2" BRASS CAP



FND: 2 1/2" BRASS CAP



SURVEYOR'S NARRATIVE

THIS SURVEY WAS UNDERTAKEN IN APRIL OF 2017 AT THE REQUEST OF JASON HAIGH. THE PURPOSE OF THE SURVEY IS TO SET THE EASTERLY PROPERTY CORNERS AND FLAG THE NORTHERLY LINE ON A PARCEL OF LAND LOCATED IN THE NORTHWEST 1/4 OF SECTION 5, TOWNSHIP 3 NORTH, RANGE 29, EAST OF THE WILLAMETTE MERIDIAN, CITY OF STANFIELD, UMATILLA COUNTY, OREGON.

I WAS ABLE TO RECOVER THE FOLLOWING CORNERS DURING THIS SURVEY:

THE NORTHEAST SECTION CORNER FOR SECTION 5, TOWNSHIP 3 NORTH, RANGE 29, EAST OF THE WILLAMETTE MERIDIAN. MONUMENTED WITH A 2 1/2" BRASS CAP.

THE NORTH ONE-QUARTER CORNER FOR SECTION 5, TOWNSHIP 3 NORTH, RANGE 29, EAST OF THE WILLAMETTE MERIDIAN. MONUMENTED WITH A 2" ALUMINUM CAP.

THE NORTHWEST SECTION CORNER FOR SECTION 5, TOWNSHIP 3 NORTH, RANGE 29, EAST OF THE WILLAMETTE MERIDIAN. MONUMENTED WITH A 2 1/2" BRASS CAP.

HIGHWAY #395 CENTERLINE MONUMENT AT STATION 614+00. MONUMENTED WITH A 3" BRASS CAP.

HIGHWAY #395 CENTERLINE MONUMENT AT STATION 605+82.5. MONUMENTED WITH A 3" BRASS CAP.

THE 2 NORTH PROPERTY CORNERS FOR TAX LOT 101.

THE NORTHERLY AND EASTERLY PROPERTY LINE OF THE PARCEL HAVE BEEN EITHER FOUND OR COMPUTED AS FOLLOWS:

THE NORTHEAST CORNER OF THE PARCEL WAS COMPUTED AS BEING 131 FEET WESTERLY AND 30 FEET SOUTHERLY FROM THE NORTH QUARTER CORNER OF SECTION 5, TOWNSHIP 3 NORTH, RANGE 29 EAST OF THE WILLAMETTE MERIDIAN. THE DISTANCES AS PREVIOUSLY MENTIONED ARE CALLED OUT FOR IN THE RECORD LEGAL DESCRIPTION FOR THE PROPERTY THAT IS RECORDED WITH UMATILLA COUNTY RECORDS DEPARTMENT.

THE SOUTHEAST CORNER OF THE PARCEL WAS COMPUTED FROM THE PREVIOUS MENTIONED COMPUTED NORTHEAST CORNER ON A BEARING INTERSECTION OF THE NORTHERLY RIGHT OF WAY LINE OF HIGHWAY #395 (65 FEET NORTHEASTERLY OF THE CENTER-LINE) AND THE BEARING FROM THE NORTH ONE-QUARTER CORNER OF SECTION 5 AND THE SOUTH ONE-QUARTER OF SECTION 5.

THE NORTH LINE OF THE PARCEL WAS HELD AS A 30 FOOT OFFSET SOUTH FROM THE FOUND 2 INCH ALUMINUM CAP MARKING THE NORTH QUARTER CORNER TO SECTION 5, TOWNSHIP 3 NORTH, RANGE 29, EAST OF THE WILLAMETTE MERIDIAN AND THE FOUND 2 1/2 INCH BRASS CAP MARKING THE NORTHWEST CORNER TO SECTION 5, TOWNSHIP 3 NORTH, RANGE 29, EAST OF THE WILLAMETTE MERIDIAN.

I FLAGGED BOTH THE NORTH LINE AND THE SOUTH LINE OF THE PARCEL AT RANDOM STATIONS IN ORDER TO PROVIDE THE CLIENT WITH A VISUAL REPRESENTATION OF THE PROPERTY LINES FOR FUTURE CONSTRUCTION ACTIVITIES.

THE BASIS OF BEARING FOR THIS RECORD OF SURVEY IS THE FOUND 2 INCH ALUMINUM CAP MARKING THE NORTH ONE-QUARTER CORNER OF SECTION 5, TOWNSHIP 3 NORTH, RANGE 29, EAST OF THE WILLAMETTE MERIDIAN AND THE FOUND 2 1/2 INCH BRASS CAP MARKING THE NORTHEAST SECTION CORNER FOR SECTION 5, TOWNSHIP 3 NORTH, RANGE 29, EAST OF THE WILLAMETTE MERIDIAN. BASIS OF BEARING IS FROM SURVEY NUMBER 98-155-C.

THIS SURVEY WAS ACCOMPLISHED UTILIZING THE TRIMBLE R10 GNSS SYSTEM. AN AUTONOMOUS POSITION WAS GENERATED ON THE BASE UNIT AND THE 2 PREVIOUSLY MENTIONED FOUND MONUMENTS WERE SUBSEQUENTLY USED FOR A SITE CALIBRATION ON THE SYSTEM. EACH CORNER WAS THEN LOCATED OR SET ON A 15 SECOND EPOCH WITH A FIXED SOLUTION ONLY.

LEGAL DESCRIPTION OF RECORD

That portion of the Northeast Quarter of the Northwest Quarter of SECTION 5, TOWNSHIP 3 NORTH, RANGE 29 East, Willamette Meridian, Umatilla County, Oregon, described as follows:

Beginning at a point on the South Right of Way line of Ball Avenue from which the North Quarter corner of Section 5 bears East 131.00 feet and North 30 Feet; thence West, along said Right of Way line to the intersection with State Highway No. 32; thence Southeasterly along said highway, to a point that is South of the point of beginning; thence North 201 feet, more or less, to the point of beginning. EXCEPTING any and all water rights of way and roads.

LEGEND

- SET 5/8" X 30" IRON ROD WITH YELLOW PLASTIC CAP STAMPED "PLS LS 48509"
- FOUND 5/8" IRON ROD WITH YELLOW PLASTIC CAP STAMPED "2431"
- ▲ FOUND 5/8" IRON ROD
- ⊕ FOUND MONUMENT AS NOTED
- × COMPUTED POINT NOT SET
- PROPERTY BOUNDARY
- - - - ROAD CENTERLINES

SURVEYS

- SURVEY NO. 91-039-C
- SURVEY NO. 94-005-B
- SURVEY NO. 98-155-C
- SURVEY NO. R-0093-B
- PARTITION PLAT 2002-20

NOTES

- () SURVEY NO. 98-155-C
- [] PARTITION PLAT NO. 2002-20
- { } SURVEY NO. 94-005-B
- (C) COMPUTED
- (D) DEED

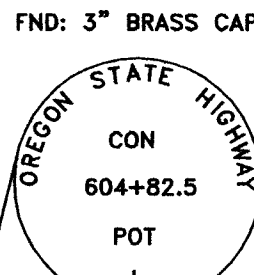
DEEDS

- INST. #2013-6120792
- INST. #2016-6440684
- DOC. #201-3890239
- REEL 218, PAGE 1412-1414

TL 100-HAIGH
INST #2016-6440684

TL 102-VANDECAR
DOC #2001-3890239

TL 101-FISHER
R 218 PG 1412-1414



SURVEYOR'S CERTIFICATION

I, BRIT L. PRIMM, A PROFESSIONAL LAND SURVEYOR IN THE STATE OF OREGON HEREBY CERTIFY THAT THIS MAP CORRECTLY REPRESENTS A SURVEY CONDUCTED UNDER MY DIRECT SUPERVISION IN APRIL 2017, IN CONFORMANCE WITH THE REQUIREMENTS OF THE SURVEY RECORDING LAW, AS ESTABLISHED BY ORS CHAPTER 92, AND HAVE SET THE PROPER MONUMENTS.

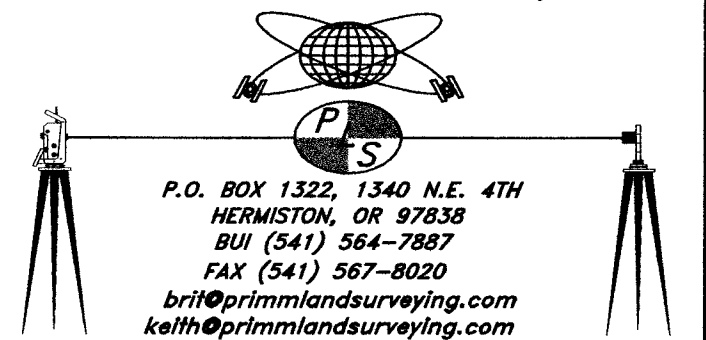
REGISTERED
PROFESSIONAL
LAND SURVEYOR

Brit L. Primm
OREGON
JULY 13, 1999
BRIT L. PRIMM
48509

EXPIRATION DATE: 12/31/18

DATE: 11 May 17

PRIMM LAND SURVEYING, INC.



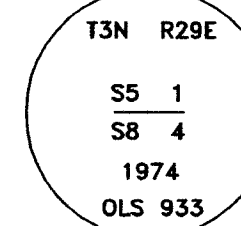
CLIENT: **JASON HAIGH**

NW 1/4 OF SEC. 5, TWP. 3 N., RNG 29 E.W.M.

PROJECT:
PROPERTY SURVEY OF A LOT LOCATED IN THE
NW 1/4 OF SECTION 5, TOWNSHIP 3 NORTH,
RANGE 29, EAST OF THE WILLAMETTE MERIDIAN,
CITY OF STANFIELD, UMATILLA COUNTY, OREGON.

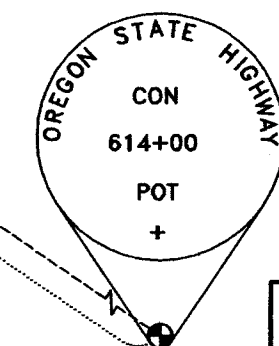
JOB #: 1704001
DATE: 06 APR 17
FB/PG: 038/32
SHEET: 1 OF 1
DRAWN: BLP
APPROVED: BLP

FND: 2 1/2" BRASS CAP

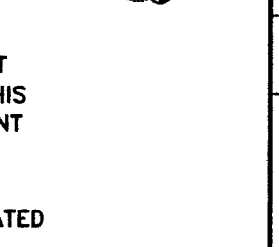


THIS CORNER WAS NOT RECOVERED DURING THIS SURVEY. THE MONUMENT DESCRIPTION IS FROM LS 43406 ON CORNER RESTORATION FORM DATED 08 AUG 2009.

FND: 3" BRASS CAP



FND: 2 1/2" BRASS CAP



FND: 2" ALUM. CAP

FND: 2" ALUM. CAP

FND: 2" ALUM. CAP

FND: 2" ALUM. CAP

FND: 2" ALUM. CAP

FND: 2" ALUM. CAP

FND: 2" ALUM. CAP

FND: 2" ALUM. CAP

FND: 2" ALUM. CAP

FND: 2" ALUM. CAP

FND: 2" ALUM. CAP

FND: 2" ALUM. CAP

FND: 2" ALUM. CAP

FND: 2" ALUM. CAP

FND: 2" ALUM. CAP

FND: 2" ALUM. CAP

FND: 2" ALUM. CAP

FND: 2" ALUM. CAP

FND: 2" ALUM. CAP

FND: 2" ALUM. CAP

FND: 2" ALUM. CAP

FND: 2" ALUM. CAP

FND: 2" ALUM. CAP

FND: 2" ALUM. CAP

FND: 2" ALUM. CAP

FND: 2" ALUM. CAP

FND: 2" ALUM. CAP

FND: 2" ALUM. CAP

FND: 2" ALUM. CAP

FND: 2" ALUM. CAP

FND: 2" ALUM. CAP

FND: 2" ALUM. CAP

FND: 2" ALUM. CAP

FND: 2" ALUM. CAP

FND: 2" ALUM. CAP

FND: 2" ALUM. CAP

FND: 2" ALUM. CAP

FND: 2" ALUM. CAP

FND: 2" ALUM. CAP

FND: 2" ALUM. CAP

FND: 2" ALUM. CAP

FND: 2" ALUM. CAP

FND: 2" ALUM. CAP

FND: 2" ALUM. CAP

FND: 2" ALUM. CAP

FND: 2" ALUM. CAP

FND: 2" ALUM. CAP

FND: 2" ALUM. CAP

FND: 2" ALUM. CAP

FND: 2" ALUM. CAP

FND: 2" ALUM. CAP

FND: 2" ALUM. CAP

FND: 2" ALUM. CAP

FND: 2" ALUM. CAP

FND: 2" ALUM. CAP

FND: 2" ALUM. CAP

FND: 2" ALUM. CAP

FND: 2" ALUM. CAP

FND: 2" ALUM. CAP

FND: 2" ALUM. CAP

FND: 2" ALUM. CAP

FND: 2" ALUM. CAP

FND: 2" ALUM. CAP

FND: 2" ALUM. CAP

FND: 2" ALUM. CAP

FND: 2" ALUM. CAP

FND: 2" ALUM. CAP

FND: 2" ALUM. CAP

FND: 2" ALUM. CAP

FND: 2" ALUM. CAP

FND: 2" ALUM. CAP

FND: 2" ALUM. CAP

FND: 2" ALUM. CAP

FND: 2" ALUM. CAP

FND: 2" ALUM. CAP

FND: 2" ALUM. CAP

FND: 2" ALUM. CAP

FND: 2" ALUM. CAP

FND: 2" ALUM. CAP

FND: 2" ALUM. CAP

FND: 2" ALUM. CAP

FND: 2" ALUM. CAP

FND: 2" ALUM. CAP

FND: 2" ALUM. CAP

FND: 2" ALUM. CAP

FND: 2" ALUM. CAP

FND: 2" ALUM. CAP

FND: 2" ALUM. CAP

FND: 2" ALUM. CAP

FND: 2" ALUM. CAP

FND: 2" ALUM. CAP

FND: 2" ALUM. CAP

FND: 2" ALUM. CAP

FND: 2" ALUM. CAP

FND: 2" ALUM. CAP

FND: 2" ALUM. CAP

FND: 2" ALUM. CAP

FND: 2" ALUM. CAP

FND: 2" ALUM. CAP

FND: 2" ALUM. CAP

FND: 2" ALUM. CAP

FND: 2" ALUM. CAP

FND: 2" ALUM. CAP

FND: 2" ALUM. CAP

FND: 2" ALUM. CAP

FND: 2" ALUM. CAP

FND: 2" ALUM. CAP

FND: 2" ALUM. CAP

FND: 2" ALUM. CAP

FND: 2" ALUM. CAP

FND: 2" ALUM. CAP

FND: 2" ALUM. CAP

FND: 2" ALUM. CAP

FND: 2" ALUM. CAP

FND: 2" ALUM. CAP

FND: 2" ALUM. CAP

FND: 2" ALUM. CAP

FND: 2" ALUM. CAP

FND: 2" ALUM. CAP

FND: 2" ALUM. CAP

FND: 2" ALUM. CAP

FND: 2" ALUM. CAP

FND: 2" ALUM. CAP

FND: 2" ALUM. CAP

FND: 2" ALUM. CAP

FND: 2" ALUM. CAP

FND: 2" ALUM. CAP

FND: 2" ALUM. CAP

FND: 2" ALUM. CAP

FND: 2" ALUM. CAP

FND: 2" ALUM. CAP

FND: 2" ALUM. CAP

FND: 2" ALUM. CAP

FND: 2" ALUM. CAP

FND: 2" ALUM. CAP

FND: 2" ALUM. CAP

FND: 2" ALUM. CAP

FND: 2" ALUM. CAP

FND: 2" ALUM. CAP

FND: 2" ALUM. CAP

FND: 2" ALUM. CAP

FND: 2" ALUM. CAP

FND: 2" ALUM. CAP

FND: 2" ALUM. CAP

FND: 2" ALUM. CAP

FND: 2" ALUM. CAP

FND: 2" ALUM. CAP

FND: 2" ALUM. CAP

FND: 2" ALUM. CAP

FND: 2" ALUM. CAP

FND: 2" ALUM. CAP

FND: 2" ALUM. CAP