

# RECORD OF SURVEY

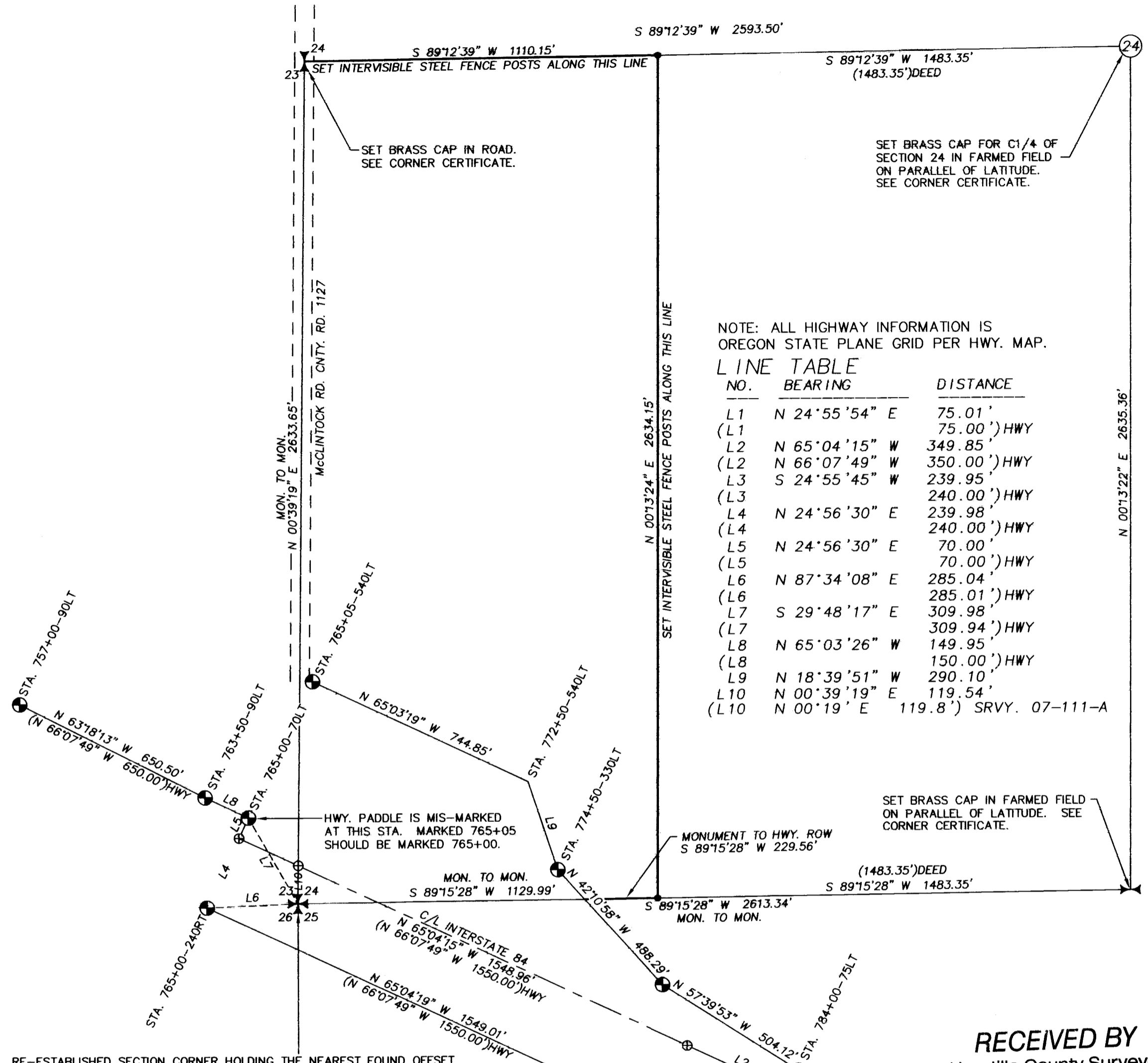
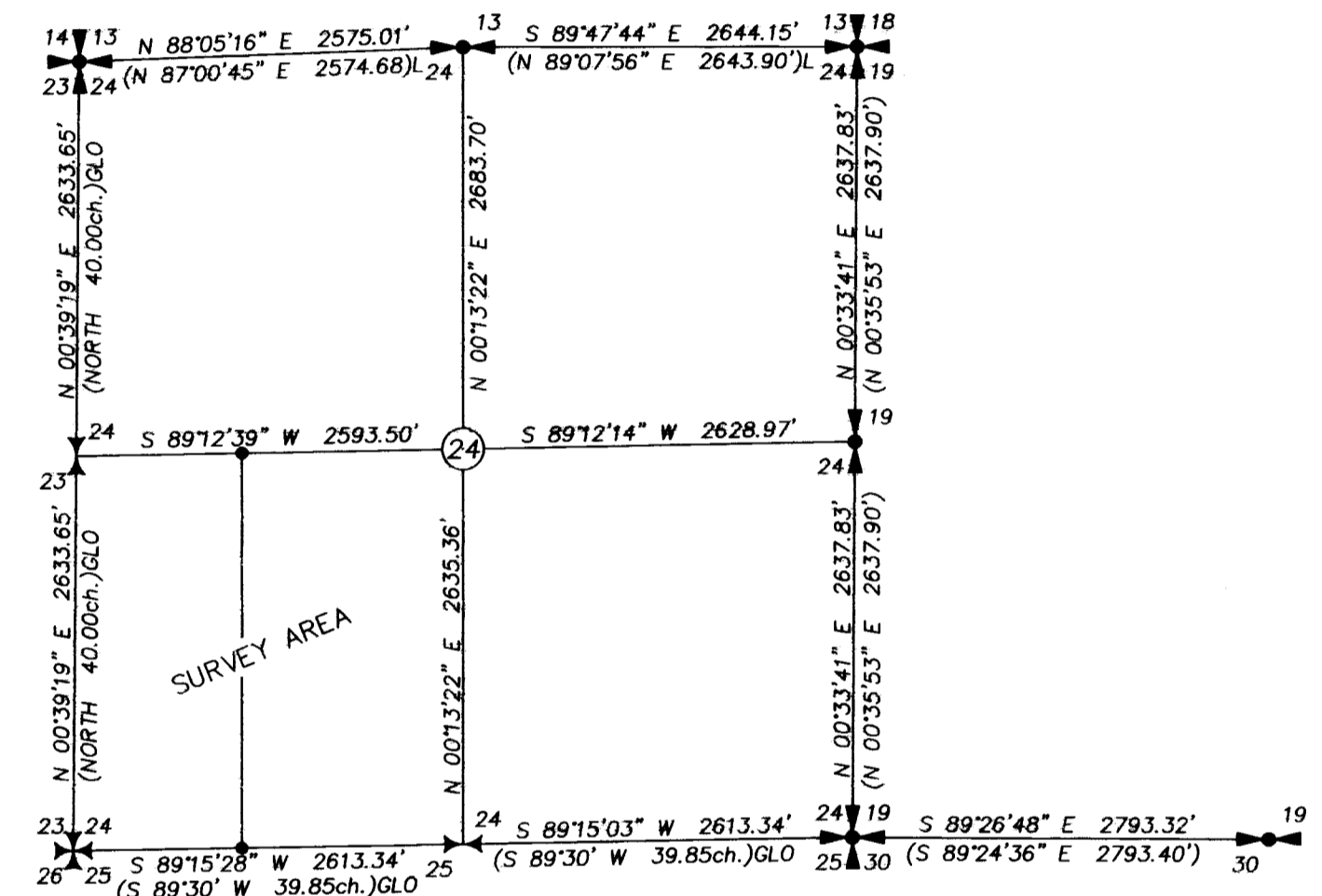
LOCATED IN THE SW1/4 OF SECTION 24, T3N, R30E, W.M., UMATILLA COUNTY, OREGON.  
FEBRUARY, 2016



SCALE: 1"=300 FEET  
0 150 300 600

"BASIS OF BEARINGS" A GEODETIC GPS OBSERVATION TAKEN AT THE SOUTH 1/4 CORNER OF SECTION 19. ROTATE COUNTER-CLOCKWISE 1.07454828", AND SCALE 0.99988477 C.F. AT THIS POINT TO OBTAIN GRID BEARINGS & DISTANCES.

SECTION DIAGRAM  
SCALE 1"=1200'



NOTE: ALL HIGHWAY INFORMATION IS OREGON STATE PLANE GRID PER HWY. MAP.

### LINE TABLE

NO.	BEARING	DISTANCE
L1	N 24°55'54" E	75.01'
(L1		75.00')HWY
L2	N 65°04'15" W	349.85'
(L2	N 66°07'49" W	350.00')HWY
L3	S 24°55'45" W	239.95'
(L3		240.00')HWY
L4	N 24°56'30" E	239.98'
(L4		240.00')HWY
L5	N 24°56'30" E	70.00'
(L5		70.00')HWY
L6	N 87°34'08" E	285.04'
(L6		285.01')HWY
L7	S 29°48'17" E	309.98'
(L7		309.94')HWY
L8	N 65°03'26" W	149.95'
(L8		150.00')HWY
L9	N 18°39'51" W	290.10'
(L9		290.10')HWY
L10	N 00°39'19" E	119.54'
(L10		119.8')SRVY. 07-111-A

RE-ESTABLISHED SECTION CORNER HOLDING THE NEAREST FOUND OFFSET STATION MONUMENTS PER HWY. MAP NO. 8B-34-20, REVISED OCT. 1967. I HELD THE RECORD STATE PLANE COORDINATES AT C/L STATION 730+00 & 750+00 AND RUN THE RECORD BEARING AND DISTANCES ALONG THE C/L TO CALCULATE THE COORDINATES OF THE OFFSET MONUMENTS. I THEN INPUT THE COORDINATES OF THE SECTION CORNER PER SAID MAP AND GOT THE RECORD DISTANCES FROM OFFSET STA. 765+00-70LT, & 765+00-240RT. USING THESE TWO FOUND STATION MONUMENTS I PUT THE SECTION CORNER BACK IN POSITION PER A DISTANCE-DISTANCE INTERSECTION. BE IT NOTED THAT ALL BEARINGS, DISTANCES, AND STATIONING PER SAID HWY. MAP ARE STATE PLANE GRID. THIS SURVEY HAS BEEN ROTATED AND SCALED.

RECEIVED BY  
Umatilla County Surveyor  
Date: 3/2/2016  
Rec'd By: Jay Robert  
No.: 16-029-B

### LEGEND

- FOUND QUARTER OR SECTION CORNER AS REPORTED ON SURVEY NO. 06-462-C OR 15-050-C.
- SET QUARTER OR SECTION CORNER AS NOTED. SEE CORNER CERTIFICATE FILED CONCURRENTLY WITH THIS SURVEY.
- SET BRASS CAP FOR CENTER QUARTER CORNER. SEE CORNER CERTIFICATE FILED CONCURRENTLY WITH THIS SURVEY.
- FOUND HWY. MONUMENT. A 1 1/2" ALUM. CAP ON SLICK PIN AT STATION AS NOTED.
- SET 5/8"x30" IRON REBAR WITH 1 1/4" BLUE PLASTIC CAP MARKED "WELLS SURVEYING PLS 54657."
- CALCULATED POINT ON HWY. C/L PER OFFSET STATION MONUMENTS.
- RECORD DIMENSION PER SURVEY NO. 06-462-C.
- RECORD DIMENSION PER SURVEY NO. 15-050-C.
- RECORD DIMENSION PER ORIGINAL GLO SURVEY BY WM. CAMPBELL CIRCA 1860.
- RECORD DIMENSION PER DEED RECORDED AS INSTRUMENT NO. 2007-5230707.
- RECORD DIMENSION PER STATE HIGHWAY MAP NO. 8B-34-20, REVISED OCT. 1967.

### NARRATIVE

THIS SURVEY WAS PERFORMED AT THE REQUEST OF ERIC ANDERSON TO MARK THE PROPERTY CORNERS AND SET INTERVISIBLE STEEL FENCE POSTS ALONG THE DEED LINE DIVIDING THE SOUTHWEST QUARTER OF SECTION 24 AS SHOWN. THE DEED USED TO LAY OUT THE PROPERTY IS RECORDED AS INSTRUMENT NO. 2007-5230707. THE DEED READS THE TRACT IS 1483.35 FEET WIDE ALONG THE NORTH AND SOUTH LINES OF THE SOUTHWEST QUARTER, AND THE WEST LINE IS PARALLEL WITH THE EAST LINE OF THE SOUTHWEST QUARTER. BECAUSE THE SOUTHWEST QUARTER OF THE SECTION IS NOT A PERFECT SQUARE, I HOLD THE RECORD DISTANCES ALONG THE NORTH AND SOUTH LINES OF THE SOUTHWEST QUARTER PER THE DEED, WITH THE WEST LINE BEING A LINE BETWEEN THE MONUMENTS.

I CALCULATED THE SOUTHWEST CORNER OF SECTION 24 USING HIGHWAY INFORMATION AS NOTED. THE SOUTH QUARTER CORNER WAS SET ON THE PARALLEL OF LATITUDE BETWEEN THE SECTION CORNERS AS SHOWN. THE WEST QUARTER CORNER WAS SET AT MID-POINT BETWEEN THE SECTION CORNERS AS SHOWN. I CALCULATED THE CENTER QUARTER CORNER OF SECTION 24, ON THE PARALLEL OF LATITUDE HOLDING THE QUARTER CORNERS NORTH, SOUTH, EAST, AND WEST.

THIS SURVEY WAS MADE WITH A TRIMBLE R8 GEODETIC GPS RECEIVER OPERATED OVER THE OREGON REAL TIME GPS NETWORK.

REGISTERED PROFESSIONAL LAND SURVEYOR  
JASON M. WELLS  
OREGON  
NOVEMBER 29, 2010  
JASON M. WELLS  
54657PLS  
RENEWS 6/30/16

WELLS SURVEYING  
200 SE HAILEY SUITE 108  
P.O. BOX 1696  
PENDLETON, OR 97801  
PHONE: (541) 276-6362

DATE: 2/16 DR. BY: JMW  
CK. BY: DMT NO: 16-1591

PROJECT:  
PROPERTY LINE SURVEY FOR:  
ERIC & MARGARET ANDERSON

LOCATED IN SW 1/4 OF SECTION 24, TOWNSHIP 3 NORTH, RANGE 30 EAST, W.M., UMATILLA COUNTY, OREGON.

ERICAND2-16ROT