

RECORD OF SURVEY

SECTION 19, TOWNSHIP 4 NORTH RANGE 38 EAST W.M.
UMATILLA COUNTY, OREGON

NARRATIVE:

THE PURPOSE OF THIS SURVEY WAS TO LOCATE, MONUMENT AND MARK THE BOUNDARIES OF NATIONAL FOREST SYSTEM LANDS LOCATED IN SECTION 19, TOWNSHIP 4 NORTH, RANGE 38 EAST.
THE SURVEY WAS CONDUCTED WITH CONVENTIONAL AND GNSS INSTRUMENTATION, CONSISTING OF A TOPCON GTP-6005C TOTAL STATION AND A PAIR OF TRIMBLE R-B GNSS RECEIVERS. THE SECTION SUBDIVISION WAS PERFORMED IN ACCORDANCE WITH PROCEDURES SET FORTH IN THE 2009 BLM MANUAL OF SURVEYING INSTRUCTIONS. ALL THE CONTROLLING CORNERS WERE FOUND IN GOOD CONDITION, WITH THE EXCEPTION OF THE NORTHEAST SECTION CORNER—SEE NOTES ON SHEET 2.
THE METES AND BOUNDS PARCEL OF NATIONAL FOREST SYSTEM LANDS LOCATED IN THE SOUTHWEST QUARTER OF THE SOUTHEAST QUARTER OF SECTION 19 WAS ESTABLISHED AS FOLLOWS:
THE EAST LINE OF THE PARCEL FROM AP-1 TO AP-2 WAS ESTABLISHED ON THE WEST LINE OF THE SOUTHEAST 1/4 OF THE SOUTHEAST 1/4, AS CALLED FOR IN THE DEED FROM HAASCH TO USA BOOK 276 PAGE 534. THE NORTH LINE FROM AP-2 TO AP-4 WAS ESTABLISHED BY CREATING A PARALLEL LINE 1216 FEET NORTH OF THE SOUTH LINE OF THE SOUTHWEST 1/4 OF THE SOUTHEAST 1/4. THE WEST LINE FROM AP-3 TO AP-4 WAS CREATED PARALLEL TO THE EAST LINE OF THE PARCEL AND THE SOUTHERN LINE FROM AP-1 TO AP-3 WAS CREATED PARALLEL TO THE NORTH LINE OF THE PARCEL. RECORD OF SURVEY 09-178-B DID NOT LOCATE THE PARCEL FROM SECTIONAL SUBDIVISION LINES AND THE 5/8" IRON REBAR FOUND N 85°47'05" E 4.48 FEET FROM AP-4 WAS NOT HELD.

HISTORY:
TOWNSHIP 4 NORTH, RANGE 38 EAST WAS PARTIALLY SUBDIVIDED BY F.W. CAMPBELL, U.S. DEPUTY SURVEYOR UNDER CONTRACT NUMBER 468, DATED APRIL 12 1883.

THE FRACTIONAL TOWNSHIP SUBDIVISION WAS COMPLETED BY R. F. OMEG, U.S. DEPUTY SURVEYOR UNDER CONTRACT NUMBER 761, DATED JUNE 16 1905. CORRECTION SURVEYS BY OMEG APRIL 9, 1906 AND MAY 6, 1907

A DEPENDENT RESURVEY WAS COMPLETED BY O.O. GOULD, UNDER GROUP NUMBER 234, DATED JULY 11, 1939.

RECORD OF SURVEY NO. 98-189-B, BOUNDARY SURVEY FOR GLEN CHOWNING

RECORD OF SURVEY NO. 09-178-B, BOUNDARY LINE ADJUSTMENT FOR CHOWNING LAND LLC

REFERENCE:
UMATILLA COUNTY DEED RECORDS—BOOK 276, PAGE 534, DEED FROM MR. HAASCH TO USA

BASIS OF BEARING:

THE BASIS OF BEARING IS THE NORTH-SOUTH CENTERLINE OF SECTION 19 AS SHOWN ON RECORD OF SURVEY NO. 09-178-B, UMATILLA COUNTY SURVEY RECORDS.

REGISTERED PROFESSIONAL LAND SURVEYOR

Mark A. Lichtenthaler

OREGON
JANUARY 18, 1994
MARK A. LICHTENTHALER
2645

EXPIRES 12-31-2014

I, MARK A. LICHTENTHALER, PROFESSIONAL LAND SURVEYOR IN THE STATE OF OREGON, HEREBY CERTIFY THAT THIS SURVEY AND NOTES HEREON ARE A TRUE AND CORRECT REPRESENTATION OF A SURVEY I CONDUCTED JULY 2012 TO SEPTEMBER 2013, AT THE REQUEST OF THE UMATILLA NATIONAL FOREST, IN ACCORDANCE WITH THE STATUTES OF THE STATE OF OREGON.

Mark A. Lichtenthaler

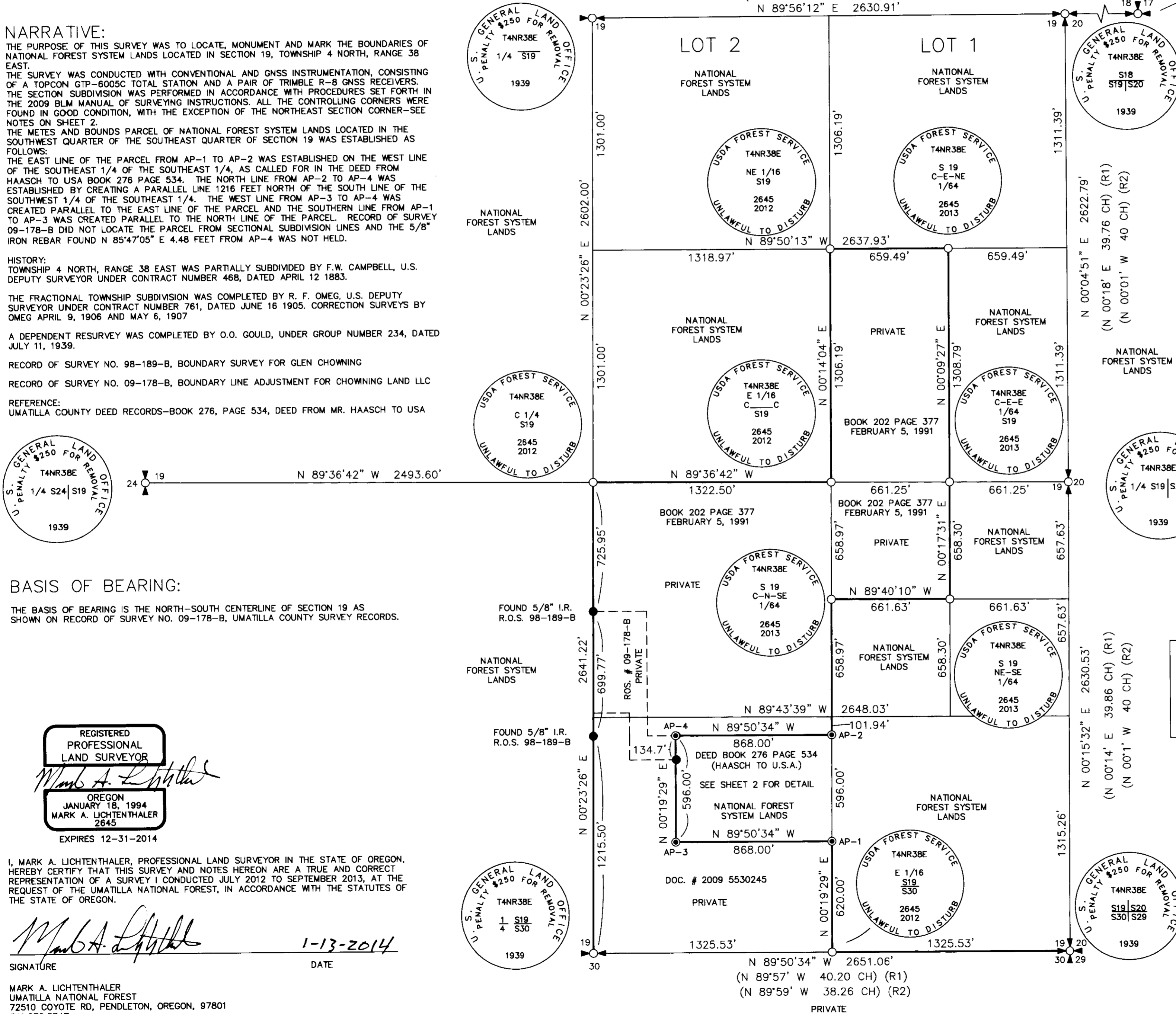
SIGNATURE

1-13-2014
DATE

MARK A. LICHTENTHALER
UMATILLA NATIONAL FOREST
72510 COYOTE RD, PENDLETON, OREGON, 97801
541.278.3747

(N 89°21' E 38.06 CH) (R2)
(N 89°49' E 40.03 CH) (R1)
N 89°56'12" E 2630.91'

(S 89°41' W 1.76 CH) (R3)
S 89°47'24" W 115.78'

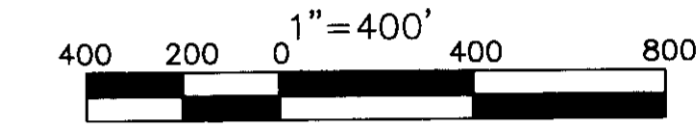


USDA FOREST SERVICE
T4NR38E
CC
S18 | S17
S20
2645
2012
UNLAWFUL TO DISTURB

S. GENERAL LAND OFFICE
PENALTY \$250 FOR REMOVAL
T4NR38E
1/4 S19
1939

S. GENERAL LAND OFFICE
PENALTY \$250 FOR REMOVAL
T4NR38E
S18 | S20
1939

RECEIVED BY
Umatilla County Surveyor
Date: 1/13/2014
Rec'd By: *[Signature]*
No. 1100218



LEGEND:

- ✱ - DENOTES FOUND 2 1/2" GLO BRASS CAP
- - DENOTES FOUND 5/8" IRON REBAR W/ YELLOW CAP
- - DENOTES SET 3 1/4" ALUMINUM CAP ON 3"x36" ALUMINUM PIPE
- ⊙ - DENOTES SET 3 1/4" ALUMINUM CAP ON 5/8"x30" IRON REBAR
- R1 - DENOTES RECORD MEASUREMENT, GOULD #468
- R2 - DENOTES RECORD MEASUREMENT, OMEG #761
- R3 - DENOTES RECORD MEASUREMENT, OMEG #761 CORRECTION SURVEY SUPPLEMENTAL NOTES 1906
- R4 - DENOTES RECORD MEASUREMENT, R.O.S. 09-178-B
- - DENOTES PROPERTY BOUNDARY POSTED WITH 54-2 "NATIONAL FOREST BOUNDARY" SIGNS

I CERTIFY THAT THIS SURVEY WAS PERFORMED AT THE REQUEST OF THE UMATILLA NATIONAL FOREST
[Signature] 1-13-14
FOREST SUPERVISOR DATE

UNITED STATES DEPARTMENT OF AGRICULTURE
FOREST SERVICE
REGION 6 - UMATILLA NATIONAL FOREST

SURVEY FOR THE UMATILLA NATIONAL FOREST
TOLLGATE WILDLAND URBAN INTERFACE PROJECT
SUBDIVISION AND BOUNDARY POSTING OF
SECTION 19 TOWNSHIP 4 NORTH, RANGE 38 EAST
WILLAMETTE MERIDIAN, UMATILLA COUNTY, OREGON

SURVEY PERFORMED:
JULY 2012 - SEPTEMBER 2013

RECORD OF SURVEY

DETAIL

SECTION 19, TOWNSHIP 4 NORTH RANGE 38 EAST W.M. UMATILLA COUNTY, OREGON

FOUND GLO BRASS CAP OUT OF THE GROUND IN THE ROOTWAD OF A WINDTHROWN TREE, RESET FROM THE FOLLOWING:
A FIR SNAG, 34" DBH, BEARS S 42° W, 39.9 FEET, ORIGINAL SCRIBING FOUND A 5 FOOT DIAMETER STUMP HOLE BEARS S 27° E 23.8 FEET THE DISTANCE ALSO FIT VERY WELL WITH RECORD DISTANCE TO THE CC OF SECTIONS 17, 18, & 20 FROM OMEG CORRECTION SURVEY 1906.
FROM WHICH:
A 10" DOUGLAS FIR BEARS N 74° W, 30.8 FEET, SCRIBED S18 BT WITH MAGNETIC NAIL AND 2" ALUM. WASHER STAMPED "2645" AT BASE OF BLAZE.
A 8" WHITE FIR BEARS S 42° W 30.6 FEET, SCRIBED T4NR38E S19 BT WITH MAGNETIC NAIL AND 2" ALUM. WASHER STAMPED "2645" AT BASE OF BLAZE.
A 18" WESTERN LARCH BEARS S 26° E 42.9 FEET, SCRIBED T4NR38E S20 BT WITH MAGNETIC NAIL AND 2" ALUMINUM WASHER STAMPED "2645" AT BASE OF BLAZE.

FOUND ORIGINAL CORNER STONE IN TWO PIECES, BASE SET FIRMLY IN THE GROUND, TOP MARKED "CC"
A TAMARACK 28" DIAMETER BEARS N 20°30' W, 33.7 FEET. PARTIAL SCRIBING VISIBLE A FIR SNAG 22" DIAMETER BEARS N 70° W, 40.9 FEET, SCRIBING VISIBLE MONUMENT AND ACCESSORIES ESTABLISHED TO PERPETUATE THE LOCATION OF THIS CORNER:
SET 3 1/4" ALUMINUM CAP ON 3"x36" ALUMINUM PIPE. MARKED AS SHOWN, STONE BURIED ALONGSIDE
FROM WHICH:
A 12" WHITE FIR BEARS N 44° W 30.9 FEET, SCRIBED T4NR38E CC S18 BT WITH MAGNETIC NAIL AND 2" ALUM. WASHER STAMPED "2645" AT BASE OF BLAZE.

SET 3 1/4" ALUMINUM CAP ON 3"x36" ALUMINUM PIPE MARKED AS SHOWN
FROM WHICH:
A MAGNETIC NAIL WITH 2" ALUMINUM WASHER STAMPED "2645" SET INTO ROCK LEDGE WITH EPOXY BEARS N 68°15' E, 51.0 FEET.
A MAGNETIC NAIL WITH 2" ALUMINUM WASHER STAMPED "2645" SET INTO ROCK LEDGE WITH EPOXY BEARS S 49°36' E, 57.1 FEET.

SET 3 1/4" ALUMINUM CAP ON 3"x36" ALUMINUM PIPE MARKED AS SHOWN
FROM WHICH:
A MAGNETIC NAIL WITH 2" ALUMINUM WASHER STAMPED "2645" SET INTO ROCK LEDGE WITH EPOXY BEARS N 48°56' W, 33.4 FEET.
A MAGNETIC NAIL WITH 2" ALUMINUM WASHER STAMPED "2645" SET INTO ROCK LEDGE WITH EPOXY BEARS S 58°38' W, 12.9 FEET.

SET 3 1/4" ALUMINUM CAP ON 3"x36" ALUMINUM PIPE MARKED AS SHOWN
FROM WHICH:
A 5/8" IRON REBAR WITH PLASTIC CAP MARKED "UMATILLA NATIONAL FOREST" BEARS N 00°14' E, 25.0 FEET
A 5/8" IRON REBAR WITH PLASTIC CAP MARKED "UMATILLA NATIONAL FOREST" BEARS N 89°37' W, 25.0 FEET

SET 3 1/4" ALUMINUM CAP ON 3"x36" ALUMINUM PIPE MARKED AS SHOWN
FROM WHICH:
A 11" WHITE FIR BEARS S 42°15' W, 19.5 FEET, SCRIBED 1/64 S19 BT, WITH MAGNETIC NAIL AND 2" ALUMINUM WASHER STAMPED "2645" AT THE BASE OF BLAZE.
A 18" SPRUCE BEARS N 75°35' W, 37.73 FEET, SCRIBED 1/64 S19 BT, WITH MAGNETIC NAIL AND 2" ALUMINUM WASHER STAMPED "2645" AT THE BASE OF BLAZE.

SET 3 1/4" ALUMINUM CAP ON 3"x36" ALUMINUM PIPE MARKED AS SHOWN
FROM WHICH:
A 10" WESTERN LARCH BEARS S 11°55' E, 23.37 FEET, SCRIBED E 1/16 BT, WITH MAGNETIC NAIL AND 2" ALUMINUM WASHER STAMPED "2645" AT THE BASE OF BLAZE.
A 8" LODGE POLE PINE BEARS S 53°28' E, 33.28 FEET, SCRIBED E 1/16 BT, WITH MAGNETIC NAIL AND 2" ALUMINUM WASHER STAMPED "2645" AT THE BASE OF BLAZE.

USDA FOREST SERVICE
T4NR38E S19
AP-1
2645
2013
UNLAWFUL TO DISTURB

USDA FOREST SERVICE
T4NR38E S19
AP-2
2645
2013
UNLAWFUL TO DISTURB

USDA FOREST SERVICE
T4NR38E S19
AP-3
2645
2013
UNLAWFUL TO DISTURB

USDA FOREST SERVICE
T4NR38E S19
AP-4
2645
2013
UNLAWFUL TO DISTURB

USDA FOREST SERVICE
T4NR38E S19
C-E-E
1/64
2645
2013
UNLAWFUL TO DISTURB

USDA FOREST SERVICE
T4NR38E S19
NE-SE
1/64
2645
2013
UNLAWFUL TO DISTURB

USDA FOREST SERVICE
T4NR38E S19
C-E-NE
1/64
2645
2013
UNLAWFUL TO DISTURB

SET A 5/8" X 30" REBAR WITH A 3 1/4" ALUMINUM CAP MARKED AS SHOWN

SET A 5/8" X 30" REBAR WITH A 3 1/4" ALUMINUM CAP MARKED AS SHOWN

SET A 5/8" X 30" REBAR WITH A 3 1/4" ALUMINUM CAP MARKED AS SHOWN

SET A 5/8" X 30" REBAR WITH A 3 1/4" ALUMINUM CAP MARKED AS SHOWN

SET 3 1/4" ALUMINUM CAP ON 3"x36" ALUMINUM PIPE MARKED AS SHOWN

FROM WHICH:
A 14" LODGE POLE PINE BEARS S 74°15' W, 16.6 FEET, SCRIBED 1/64 S19 BT, WITH MAGNETIC NAIL AND 2" ALUMINUM WASHER STAMPED "2645" AT THE BASE OF BLAZE.
A 12" LARCH BEARS N 89°18' W, 13.4 FEET, SCRIBED 1/64 S19 BT, WITH MAGNETIC NAIL AND 2" ALUMINUM WASHER STAMPED "2645" AT THE BASE OF BLAZE.

SET 3 1/4" ALUMINUM CAP ON 3"x36" ALUMINUM PIPE MARKED AS SHOWN

FROM WHICH:
A 13" WHITE FIR BEARS S 39°45' E, 14.2 FEET, SCRIBED NE-SE 1/64 S19 BT, WITH MAGNETIC NAIL AND 2" ALUMINUM WASHER STAMPED "2645" AT THE BASE OF BLAZE.
A 10" WHITE FIR BEARS S 3°34' W, 23.7 FEET, SCRIBED NE-SE 1/64 S19 BT, WITH MAGNETIC NAIL AND 2" ALUMINUM WASHER STAMPED "2645" AT THE BASE OF BLAZE.

SET 3 1/4" ALUMINUM CAP ON 3"x36" ALUMINUM PIPE MARKED AS SHOWN

FROM WHICH:
A 10" WHITE FIR BEARS S 8°36' W, 23.3 FEET, SCRIBED 1/64 S19 BT, WITH MAGNETIC NAIL AND 2" ALUMINUM WASHER STAMPED "2645" AT THE BASE OF BLAZE.
A 7" SPRUCE BEARS N 78°45' W, 15.4 FEET, SCRIBED X BT, WITH MAGNETIC NAIL AND 2" ALUMINUM WASHER STAMPED "2645" AT THE BASE OF BLAZE.

S. GENERAL LAND OFFICE
PENALTY \$250 FOR REMOVAL
T4NR38E
S18 S20
1939

USDA FOREST SERVICE
T4NR38E
CC
S18 S17
S20
2645
2012
UNLAWFUL TO DISTURB

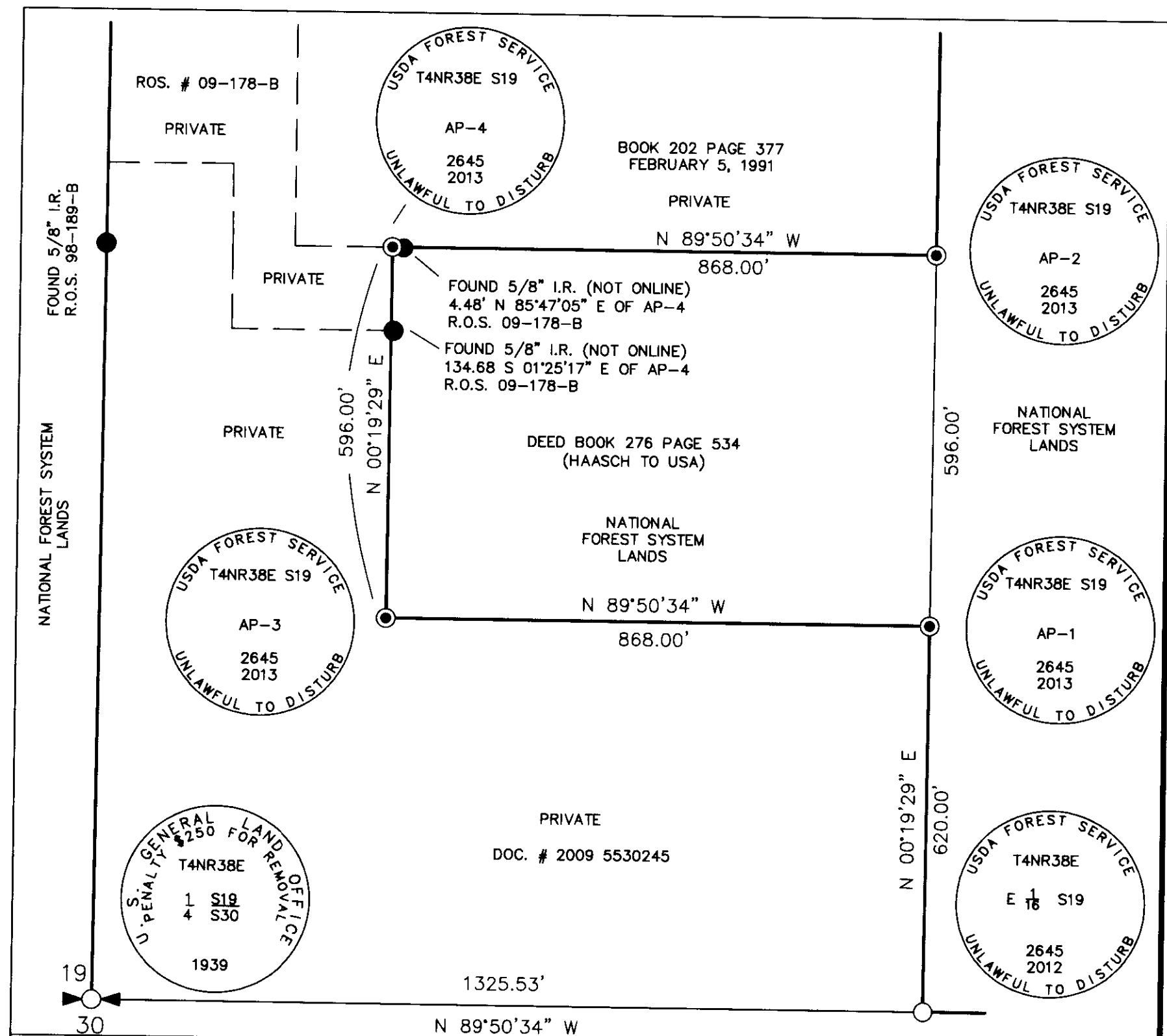
USDA FOREST SERVICE
T4NR38E
C 1/4
2645
2012
UNLAWFUL TO DISTURB

USDA FOREST SERVICE
T4NR38E
NE 1/16
2645
2012
UNLAWFUL TO DISTURB

USDA FOREST SERVICE
T4NR38E
E 1/16
C 1/16
S19
2645
2012
UNLAWFUL TO DISTURB

USDA FOREST SERVICE
T4NR38E
S19
C-N-SE
1/64
2645
2013
UNLAWFUL TO DISTURB

USDA FOREST SERVICE
T4NR38E
E 1/16
S19
S30
2645
2012
UNLAWFUL TO DISTURB



LEGEND:

- - DENOTES FOUND 5/8" IRON REBAR WITH YELLOW PLASTIC CAP
- ⊙ - DENOTES SET 3 1/4" ALUMINUM CAP ON 5/8"x30" IRON REBAR
- - DENOTES PROPERTY BOUNDARY POSTED WITH 54-2 SIGNS

NORTH
1" = 200'

RECEIVED BY
Umatilla County Surveyor
Date: 11/16/2014
Rec'd By: [Signature]
No: 14-005 B

REGISTERED
PROFESSIONAL
LAND SURVEYOR
[Signature]
OREGON
JANUARY 18, 1994
MARK A. LICHTENTHALER
2645
EXPIRES 12-31-2014

UNITED STATES DEPARTMENT OF AGRICULTURE
FOREST SERVICE
REGION 6 - UMATILLA NATIONAL FOREST

SURVEY FOR THE UMATILLA NATIONAL FOREST
TOLLGATE WILDLAND URBAN INTERFACE PROJECT
SUBDIVISION AND BOUNDARY POSTING OF
SECTION 19 TOWNSHIP 4 NORTH, RANGE 38 EAST
WILLAMETTE MERIDIAN, UMATILLA COUNTY, OREGON

SURVEY PERFORMED:
JULY 2012 - SEPTEMBER 2013