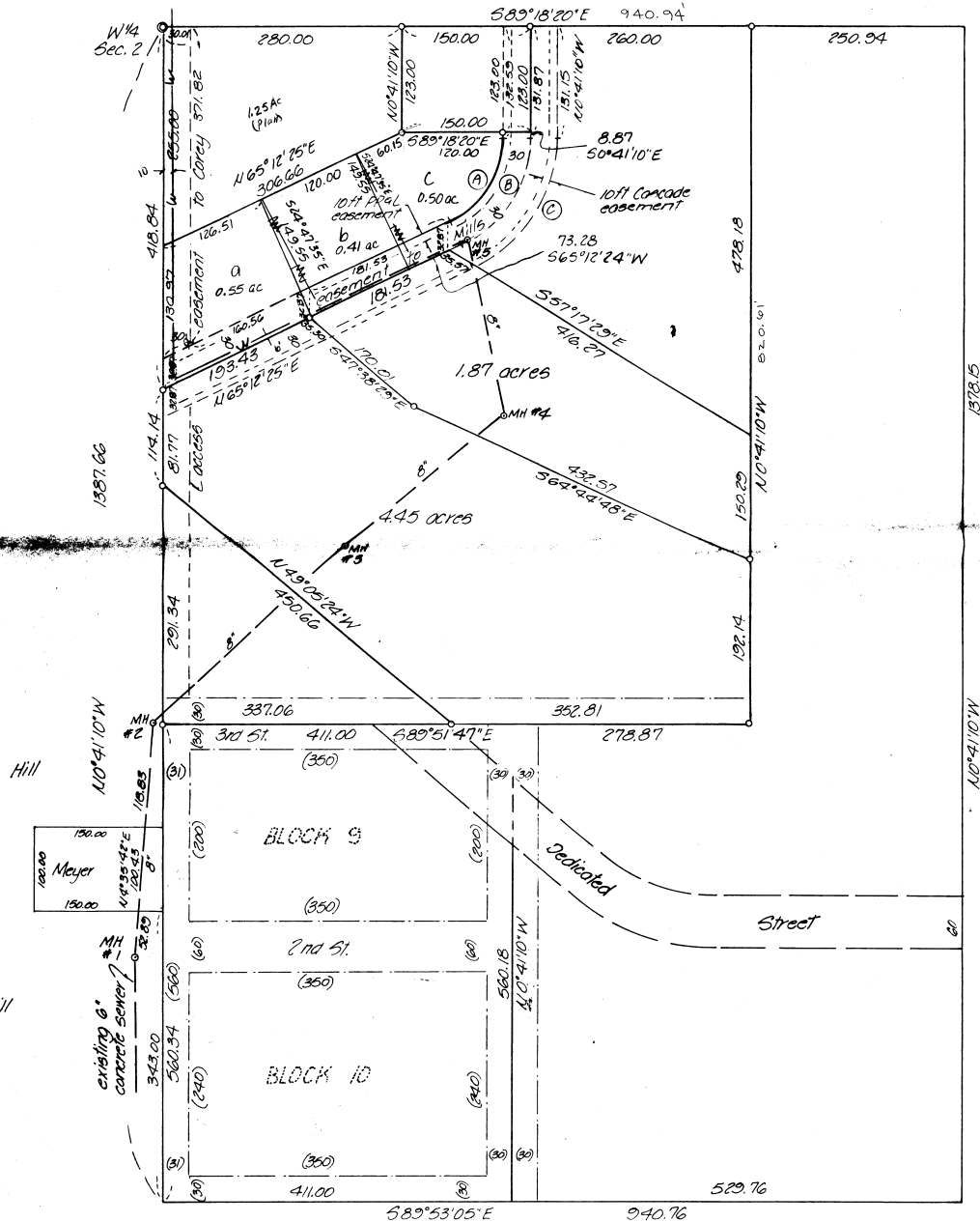


NARRATIVE



- Ⓐ $\Delta = 65^{\circ}53'35''$
 A = 115.01
 T = 64.81
 Ch = 108.77
 N $32^{\circ}15'37''$ E
- Ⓑ $\Delta = 65^{\circ}53'35''$
 A = 149.51
 T = 84.25
 Ch = 141.40
 N $32^{\circ}15'37''$ E
- Ⓒ $\Delta = 65^{\circ}53'35''$
 A = 184.01
 T = 103.89
 Ch = 174.03
 N $32^{\circ}15'37''$ E



○ denotes find Brass Cap
 ○ denotes find 9/8" iron pin, Co. Surveyor No. 5-49B

KRUMHOLTZ ENGINEERING LTD. ENGINEERS - SURVEYORS - PLANNERS 361 S.E. Second Pendleton, Oregon		Date 7-15-89	Drawn by JMB	Check by JMB
Survey for MILLS-COREY		(2)		
NW1/4, SW1/4, Sec. 2, T24, R32E, W1M.				