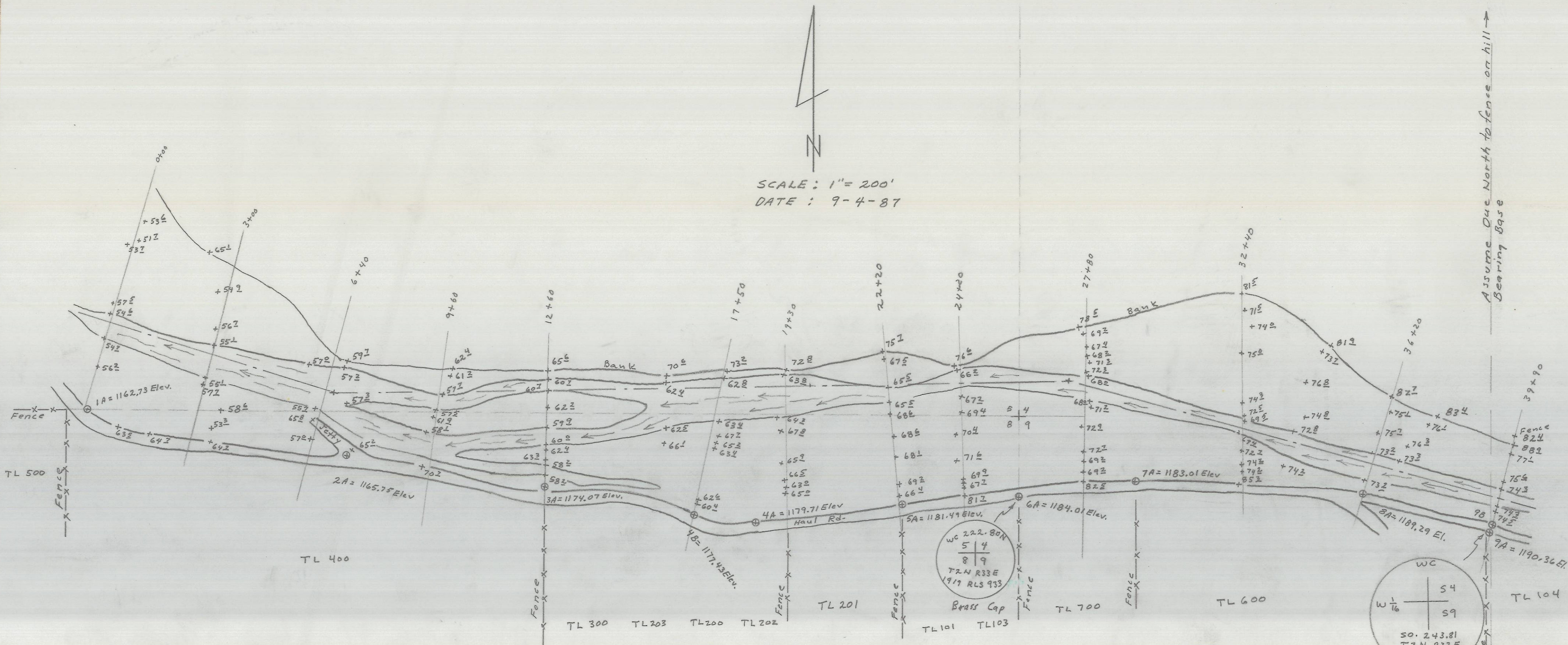


SCALE: 1" = 200'
DATE: 9-4-87



Assume Due North to fence on hill
Bearing Base

Sta to Sta	Brg	Dist
1A to 2A	S 79° 25' 30" E	741.4 Ft
2A to 3A	S 80° 40' 30" E	567.8
3A to 4A	S 79° 57' E	602.1
3A to 4B	S 79° 05' E	430.1
4A to 5A	N 82° 57' E	417.4
4A to 6A	N 84° 30' E	748.4
4A to 7A	N 84° 09' E	1076.8
7A to 8A	S 86° 54' 30" E	645.6
8A to 9A	S 73° 47' E	376.3
9A to 9B	N 15° 50' E	19

FOR: TERRY CLARKE - PENDLETON READY MIX
A TOPOGRAPHIC SURVEY OF THE
UMATILLA RIVER IN THE N. 1/2 OF
SECTIONS 4 & 5, T2N, R33E, W.M.

RECEIVED BY
Umatilla County Surveyor
Date: 5/30/2013
Rec'd By: M.K.
No.: 13-180-B

REGISTERED
PROFESSIONAL
LAND SURVEYOR
DONALD L. STAEBLER
SEPT. 23, 1977
#1333

SCALE: 1" = 200' DATE: 9-4-87
BY: DONALD L. STAEBLER
ENGINEER - SURVEYOR
1532 S.W. 41st ST.
PENDLETON, OR. 97801
PH 276-7166