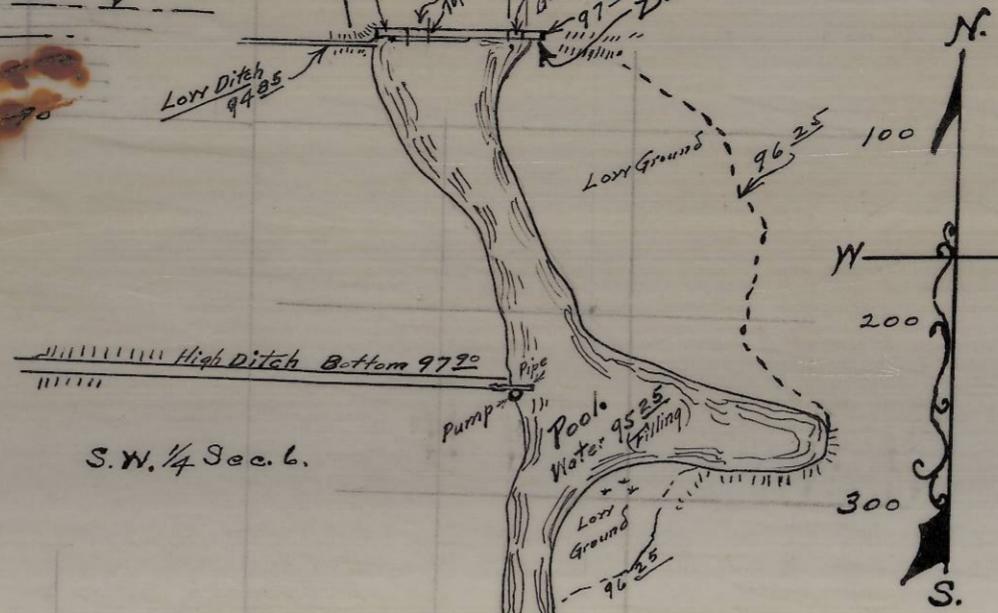


Elevation of Dam - From Up-Stream.
 Scale 1" = 10' Vertical
 " 1" = 10' Horizontal



Map Showing Dam and
 Storage Arrangement
 For Irrigation Purposes.
 Located in Secs. 6 & 7, T. 3 N., R. 29 E., W.M.
 Standfield - Umatilla Co., Oregon
 Surveyed - May 1936, by W.E.O. Criger - P.C.E.
 Scale 1" = 100 ft.

See Vina Hoskins.



RECEIVED BY
 Umatilla County Surveyor
 Date: 2/21/13
 Rec'd By: J. Tubew
 No.: 13-109-B

Vina Hoskins