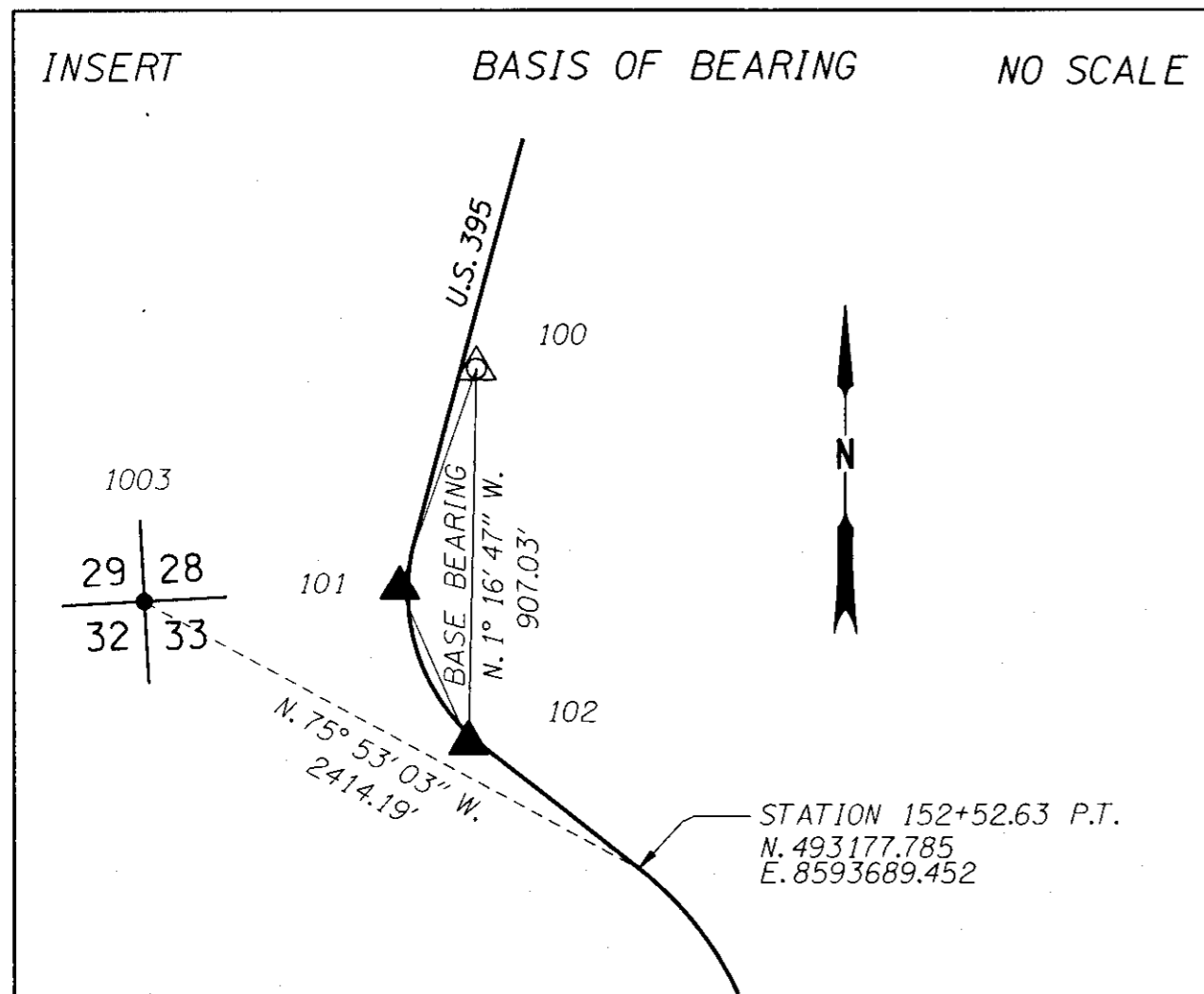


N.E. 1/4 SEC. 28, T. 6 S., R. 31 E., W.M.  
 N.E. 1/4 SEC. 33, T. 6 S., R. 31 E., W.M.



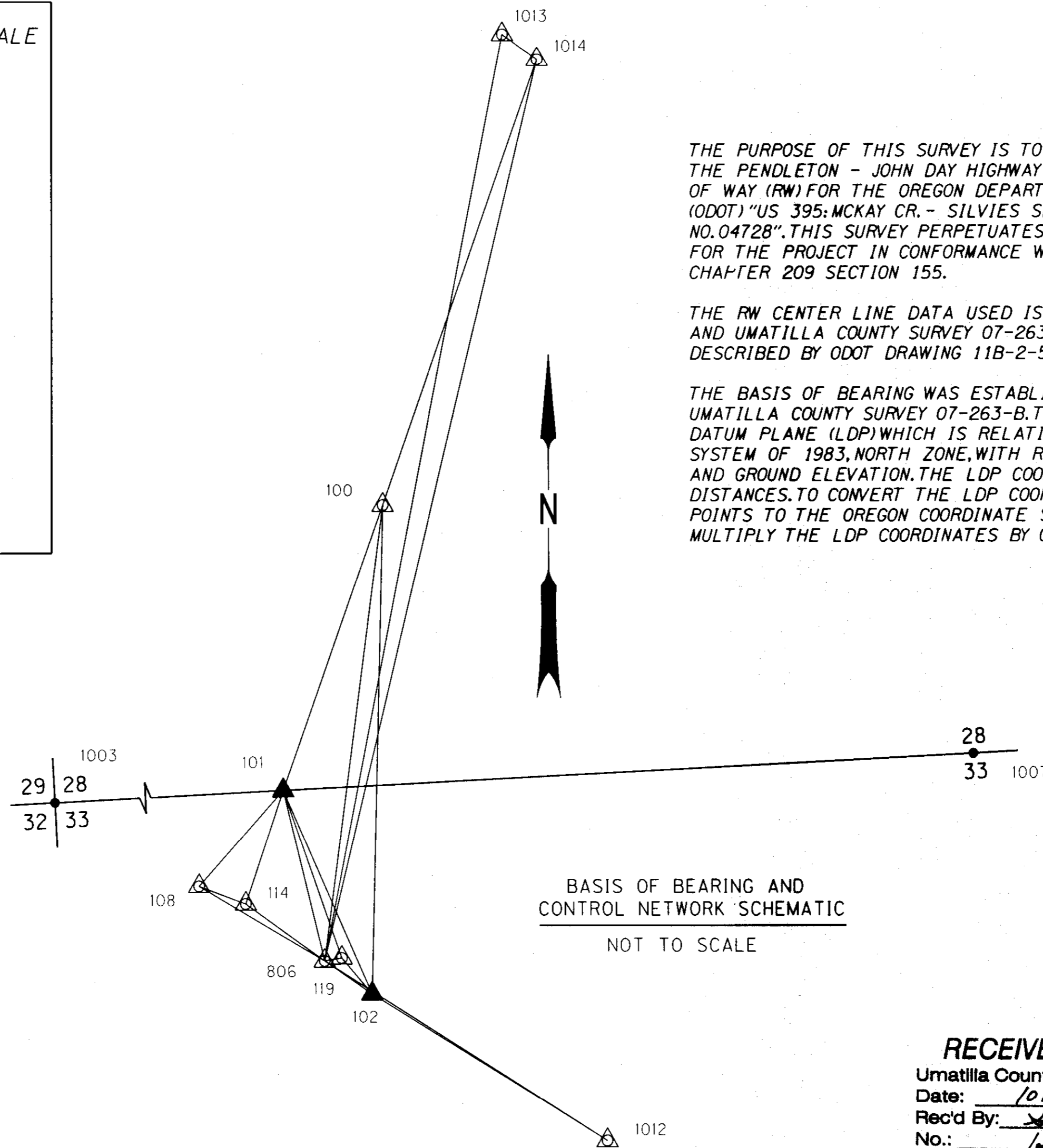
THE PURPOSE OF THIS SURVEY IS TO MONUMENT THE CENTER LINE OF THE PENDLETON - JOHN DAY HIGHWAY AND THE NEWLY ACQUIRED RIGHT OF WAY (RW) FOR THE OREGON DEPARTMENT OF TRANSPORTATION PROJECT (ODOT) "US 395; MCKAY CR. - SILVIES SLOUGH (D/B) - BUNDLE 414, BRIDGE NO. 04728". THIS SURVEY PERPETUATES THE ALIGNMENT AND RW DEVELOPED FOR THE PROJECT IN CONFORMANCE WITH OREGON REVISED STATUTE (ORS) CHAPTER 209 SECTION 155.

THE RW CENTER LINE DATA USED IS DESCRIBED BY ODOT DRAWING 10B-6-4 AND UMATILLA COUNTY SURVEY 07-263-B. THE NEW RW PURCHASES ARE DESCRIBED BY ODOT DRAWING 11B-2-5.

THE BASIS OF BEARING WAS ESTABLISHED BY GPS AS DESCRIBED BY UMATILLA COUNTY SURVEY 07-263-B. THIS SURVEY UTILIZES A LOCAL DATUM PLANE (LDP) WHICH IS RELATIVE TO THE OREGON COORDINATE SYSTEM OF 1983, NORTH ZONE, WITH RESPECT TO THE LOCAL LATITUDE AND GROUND ELEVATION. THE LDP COORDINATES DEFINE TRUE GROUND DISTANCES. TO CONVERT THE LDP COORDINATES FOR THE CONTROL POINTS TO THE OREGON COORDINATE SYSTEM OF 1983, NORTH ZONE, MULTIPLY THE LDP COORDINATES BY 0.999772.

NETWORK DISTANCE AND BEARING TABLE

AT	TO	DISTANCE (FT)	BEARING
100	101 RESET	561.31'	S19°24'55"W
100	102 RESET	907.03'	S01°16'47"W
100	806	852.34'	S07°21'36"W
100	1014	876.72'	N19°13'41"E
101 RESET	102 RESET	412.44'	S23°47'00"E
101 RESET	108	237.01'	S41°29'04"W
101 RESET	114	221.39'	S18°24'30"W
101 RESET	119	329.16'	S19°24'57"E
101 RESET	806	325.28'	S13°45'57"E
102 RESET	119	87.89'	N40°21'20"W
102 RESET	806	108.11'	N55°20'30"W
102 RESET	1012	517.03'	S58°06'22"E
108	114	92.96'	S69°31'48"E
108	806	272.20'	S59°26'37"E
114	806	181.41'	S54°17'41"E
119	806	32.49'	S80°16'09"W
806	1012	625.04'	S57°37'41"E
806	1013	1,751.41'	N10°58'05"E
806	1014	1,719.79'	N13°22'41"E
1013	1014	79.54'	S54°24'38"E



LEGEND	
▲	SET NETWORK POINT
△	FOUND MONUMENT USED AS NETWORK POINT
—▲—▲—	LINE OF OBSERVATION

NETWORK POINT COORDINATE TABLE

PT. NO.	LDP NORTHING	LDP EASTING	DATE	DESCRIPTION & REFERENCE DOCUMENTS
100	494389.538	8593295.537	6/19/2012	FOUND 5/8" IRON ROD WITH 1/2" DIA. ALUMINUM CAP AND CONCRETE COLLAR, STAMPED "100, WHITE SHIELD", CS 07-263-B
101 RESET	493860.153	8593108.951	6/19/2012	SET 5/8" X 30" IRON ROD WITH 1/2" DIA. ALUMINUM CAP, STAMPED "ODOT, 101, RESET, 2012"
102 RESET	493482.739	8593275.280	6/19/2012	SET 5/8" X 30" IRON ROD WITH 1/2" DIA. ALUMINUM CAP, STAMPED "ODOT, 102, RESET, 2012"
108	493682.603	8592951.954	6/19/2012	FOUND 5/8" IRON ROD WITH RED PLASTIC CAP, STAMPED "OTAK CONTROL"
114	493650.095	8593039.040	6/19/2012	FOUND 5/8" IRON ROD WITH RED PLASTIC CAP, STAMPED "OTAK CONTROL"
119	493549.712	8593218.371	6/19/2012	FOUND 5/8" IRON ROD WITH 2" DIA. ALUMINUM CAP, STAMPED "OTAK CONTROL, 119"
806	493544.221	8593186.351	6/19/2012	FOUND 5/8" IRON ROD WITH WHITE PLASTIC CAP, STAMPED "WHITE SHIELD"
1003	493766.567	8591348.164	6/19/2012	FOUND 1/2" DIA. IRON PIPE, CS 1-13-B
1012	493209.569	8593714.249	6/19/2012	FOUND 3" DIA. BRASS DISK WITH AN 8" DIA. CONCRETE CYLINDER, STAMPED "US DEPT OF AGRICULTURE, BUREAU OF PUBLIC RDS."
1013	495263.637	8593519.581	6/19/2012	FOUND 3" DIA. BRASS DISK WITH AN 8" DIA. CONCRETE CYLINDER, STAMPED "US DEPT OF AGRICULTURE, BUREAU OF PUBLIC RDS."
1014	495217.346	8593584.265	6/19/2012	FOUND 3" DIA. BRASS DISK WITH AN 8" DIA. CONCRETE CYLINDER, STAMPED "US DEPT OF AGRICULTURE, BUREAU OF PUBLIC RDS."
1007	493905.185	8593954.035	6/19/2012	FOUND 2" DIA. IRON PIPE, CS 1-13-B

RECEIVED BY  
 Umatilla County Surveyor  
 Date: 10/10/2012  
 Rec'd By: [Signature]  
 No.: 12-135-B

REGISTERED PROFESSIONAL LAND SURVEYOR

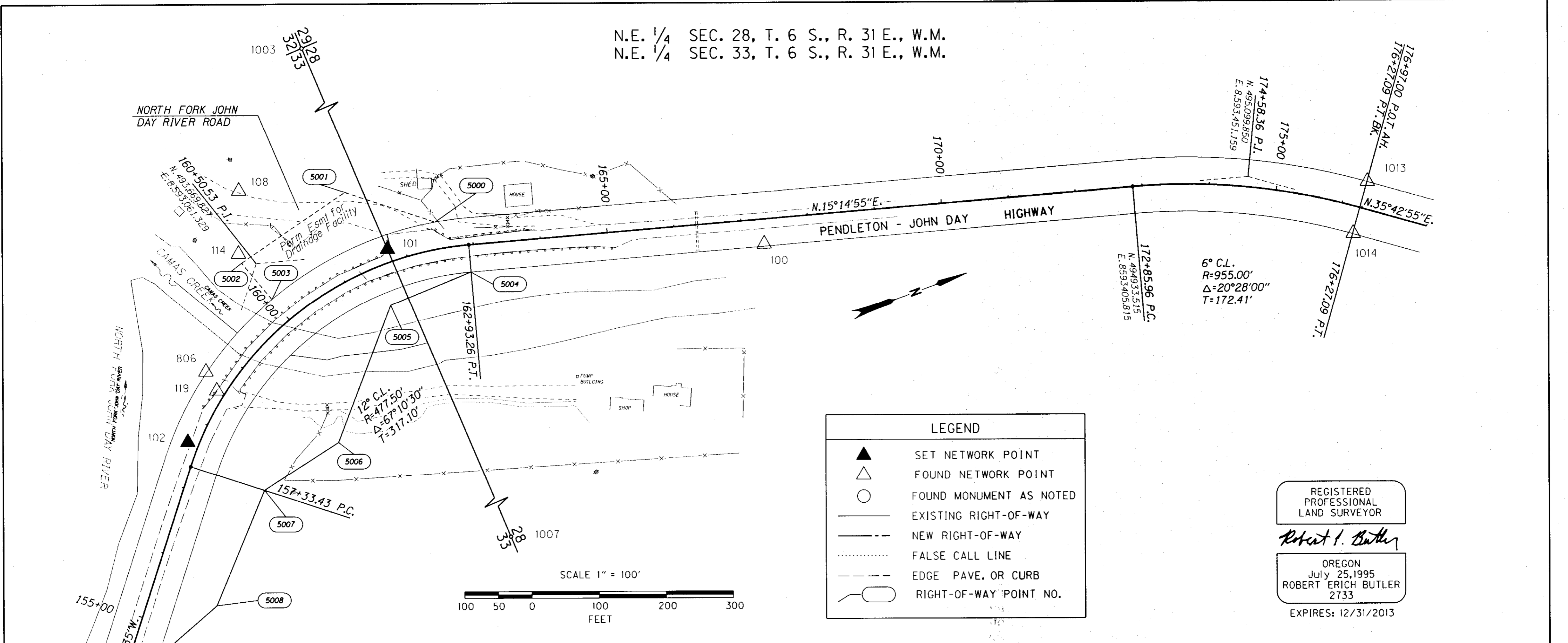
[Signature]  
 OREGON  
 July 25, 1995  
 ROBERT ERICH BUTLER  
 2733

EXPIRES: 12/31/2013

OREGON DEPARTMENT OF TRANSPORTATION  
 RIGHT-OF-WAY NETWORK MONUMENTATION MAP  
 CAMAS CREEK BRIDGE NO. 04728  
 PENDLETON - JOHN DAY HIGHWAY NO. 28  
 (U.S. 395)  
 UMATILLA COUNTY

ODOT REGION 5  
 3012 ISLAND AVE.  
 LA GRANDE, OR. 97850-9497  
 JUNE 20, 2012  
 SHEET 1 OF 2

N.E. 1/4 SEC. 28, T. 6 S., R. 31 E., W.M.  
 N.E. 1/4 SEC. 33, T. 6 S., R. 31 E., W.M.



**LEGEND**

- SET NETWORK POINT
- FOUND NETWORK POINT
- FOUND MONUMENT AS NOTED
- EXISTING RIGHT-OF-WAY
- NEW RIGHT-OF-WAY
- FALSE CALL LINE
- EDGE PAVE. OR CURB
- RIGHT-OF-WAY POINT NO.

REGISTERED PROFESSIONAL LAND SURVEYOR  
*Robert I. Butler*  
 OREGON  
 July 25, 1995  
 ROBERT ERICH BUTLER  
 2733  
 EXPIRES: 12/31/2013

SET AND RECOVERED MONUMENT LIST

PT. NO.	LDP NORTHING	LDP EASTING	STATION & ALIGNMENT	OFFSET	DATE	DESCRIPTION & REFERENCE DOCUMENTS
100	494389.538	8593295.537	167+32.13 HWY 395	36.67 Rt.	6/19/2012	FOUND 5/8" IRON ROD WITH 1 1/2" DIA. ALUMINUM CAP AND CONCRETE COLLAR, STAMPED "100, WHITE SHIELD", CS07-263-B
101 RESET	493860.153	8593108.951	161+75.78 HWY 395	19.09 Lt.	6/19/2012	SET 5/8" X 30" IRON ROD WITH 1/2" DIA. ALUMINUM CAP, STAMPED "ODOT, 101, RESET, 2012"
102 RESET	493482.739	8593275.280	157+65.65 HWY 395	16.47 Lt.	6/19/2012	SET 5/8" X 30" IRON ROD WITH 1/2" DIA. ALUMINUM CAP, STAMPED "ODOT, 102, RESET, 2012"
108	493682.603	8592951.954	160+46.31 HWY 395	197.11 Lt.	6/19/2012	FOUND 5/8" IRON ROD WITH RED PLASTIC CAP, STAMPED "OTAK CONTROL"
114	493650.095	8593039.040	160+04.03 HWY 395	123.18 Lt.	6/19/2012	FOUND 5/8" IRON ROD WITH RED PLASTIC CAP, STAMPED "OTAK CONTROL"
119	493549.712	8593218.371	158+50.97 HWY 395	12.48 Lt.	6/19/2012	FOUND 5/8" IRON ROD WITH 2" DIA. ALUMINUM CAP, STAMPED "OTAK CONTROL, 119"
806	493544.221	8593186.351	158+65.05 HWY 395	41.37 Lt.	6/19/2012	FOUND 5/8" IRON ROD WITH WHITE PLASTIC CAP, STAMPED "WHITE SHIELD"
1003	493766.567	8591348.164	161+48.50 HWY 395	1781.30 Lt.	6/19/2012	FOUND 1/2" DIA. IRON PIPE, CS 1-13-B
1007	493905.185	8593954.035	154+92.91 HWY 395	735.79 Rt.	6/19/2012	FOUND 2" DIA. IRON PIPE, CS 1-13-B
1011	493146.570	8593664.856	152+52.74 HWY 395	39.74 Lt.	6/19/2012	FOUND 3" DIA. BRASS DISK WITH AN 8" DIA. CONCRETE CYLINDER, STAMPED "US DEPT OF AGRICULTURE, BUREAU OF PUBLIC RDS."
1012	493209.569	8593714.249	152+52.71 HWY 395	40.31 Rt.	6/19/2012	FOUND 3" DIA. BRASS DISK WITH AN 8" DIA. CONCRETE CYLINDER, STAMPED "US DEPT OF AGRICULTURE, BUREAU OF PUBLIC RDS."
1013	495263.637	8593519.581	176+97.52 HWY 395	40.14' Lt.	6/19/2012	FOUND 3" DIA. BRASS DISK WITH AN 8" DIA. CONCRETE CYLINDER, STAMPED "US DEPT OF AGRICULTURE, BUREAU OF PUBLIC RDS."
1014	495217.346	8593584.265	176+97.70 HWY 395	39.48' Rt.	6/19/2012	FOUND 3" DIA. BRASS DISK WITH AN 8" DIA. CONCRETE CYLINDER, STAMPED "US DEPT OF AGRICULTURE, BUREAU OF PUBLIC RDS."

RIGHT-OF-WAY POINTS LIST

PT. NO.	LDP NORTHING	LDP EASTING	STATION & ALIGNMENT	OFFSET	DATE	DESCRIPTION
5000	493940.557	8593095.710	162+50.00 HWY 395	40.00' Lt.	6/19/2012	RIGHT-OF-WAY POINT, NO MONUMENT SET
5001	493829.939	8593008.261	161+50.00 HWY 395	120.00' Lt.	6/19/2012	RIGHT-OF-WAY POINT, NO MONUMENT SET
5002	493649.821	8593053.138	160+00.00 HWY 395	110.00' Lt.	6/19/2012	RIGHT-OF-WAY POINT, NO MONUMENT SET
5003	493673.694	8593118.941	160+00.00 HWY 395	40.00' Lt.	6/19/2012	RIGHT-OF-WAY POINT, NO MONUMENT SET
5004	493965.243	8593183.320	162+93.26 HWY 395	40.00' Rt.	6/19/2012	RIGHT-OF-WAY POINT, NO MONUMENT SET
5005	493836.036	8593188.157	161+50.00 HWY 395	60.00 Rt.	6/19/2012	RIGHT-OF-WAY POINT, NO MONUMENT SET
5006	493692.796	8573352.960	159+00.00 HWY 395	180.00 Rt.	6/19/2012	RIGHT-OF-WAY POINT, NO MONUMENT SET
5007	493564.811	8593381.874	157+33.43 HWY 395	115.00 Rt.	6/19/2012	RIGHT-OF-WAY POINT, NO MONUMENT SET
5008	493439.889	8593517.020	155+50.00 HWY 395	100.00 Rt.	6/19/2012	RIGHT-OF-WAY POINT, NO MONUMENT SET
5009	493330.986	8593558.750	154+50.00 HWY 395	40.00 Rt.	6/19/2012	RIGHT-OF-WAY POINT, NO MONUMENT SET

**RECEIVED BY**  
 Umatilla County Surveyor  
 Date: 10/10/2012  
 Rec'd By: [Signature]  
 No.: 12-135-B

OREGON DEPARTMENT OF TRANSPORTATION  
 RIGHT-OF-WAY NETWORK MONUMENTATION MAP  
 CAMAS CREEK BRIDGE NO. 04728  
 PENDLETON - JOHN DAY HIGHWAY NO. 28  
 (U.S. 395)  
 UMATILLA COUNTY

ODOT REGION 5  
 3012 ISLAND AVE.  
 LA GRANDE, OR. 97850-9497

JUNE 20, 2012  
 SHEET 2 OF 2