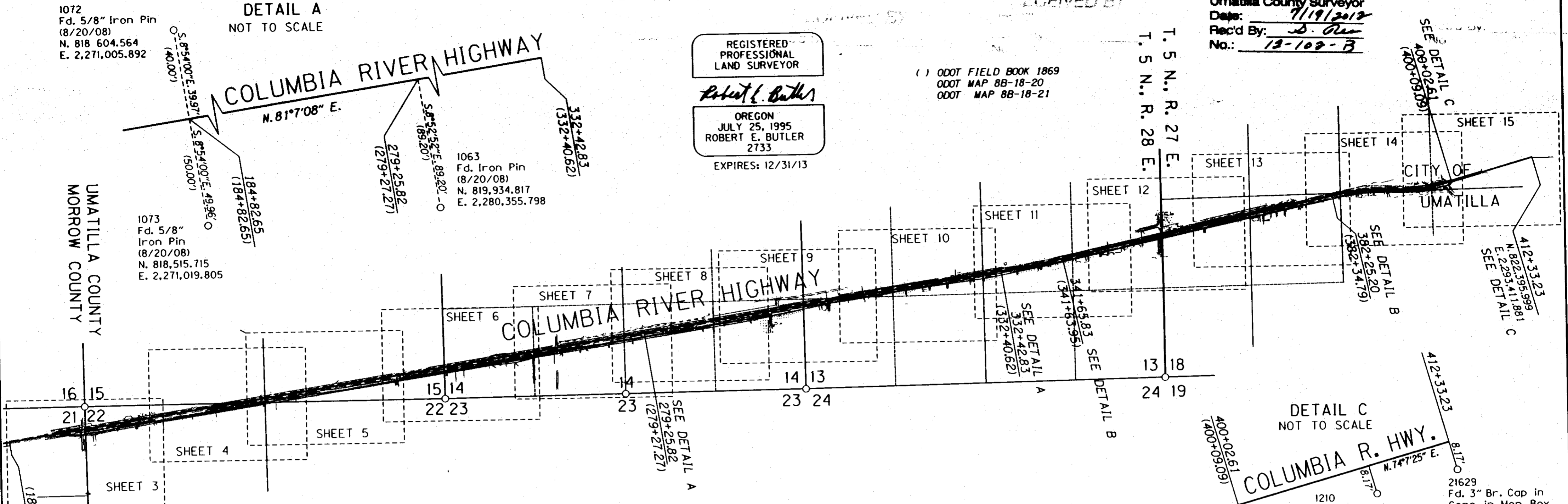


SEC. 13, 14, 15, 21, & 22, T. 5 N., R. 27 E., W.M.  
 SEC. 17, 18, & 19, T. 5 N., R. 28 E., W.M.

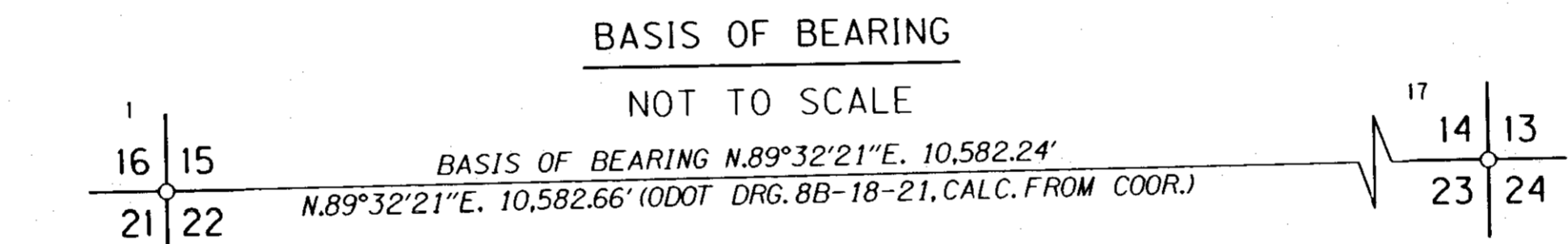
RECEIVED BY  
 Umatilla County Surveyor  
 Date: 7/19/2012  
 Rec'd By: S. Alan  
 No.: 13-102-B

REGISTERED PROFESSIONAL LAND SURVEYOR  
 Robert E. Butler  
 OREGON  
 JULY 25, 1995  
 ROBERT E. BUTLER  
 2733  
 EXPIRES: 12/31/13

( ) ODOT FIELD BOOK 1869  
 ODOT MAP 8B-18-20  
 ODOT MAP 8B-18-21



- REFERENCE DOCUMENTS:
- UMATILLA COUNTY SURVEY D-43-AX,
  - UMATILLA COUNTY SURVEY H-106-B,
  - UMATILLA COUNTY SURVEY I-16-C,
  - UMATILLA COUNTY SURVEY M-71-A,
  - UMATILLA COUNTY SURVEY N-7-B,
  - UMATILLA COUNTY SURVEY Q-952-B,
  - UMATILLA COUNTY SURVEY Q-958-B,
  - UMATILLA COUNTY SURVEY Q-959-B,
  - UMATILLA COUNTY SURVEY Q-960-B,
  - UMATILLA COUNTY SURVEY R-19-C,
  - UMATILLA COUNTY SURVEY R-34-A,
  - UMATILLA COUNTY SURVEY 84-15-A,
  - UMATILLA COUNTY SURVEY 93-113-C,
  - UMATILLA COUNTY SURVEY 94-148-A,
  - UMATILLA COUNTY SURVEY 95-22-C,
  - UMATILLA COUNTY SURVEY 95-136-B,
  - UMATILLA COUNTY SURVEY 97-182-B,
  - UMATILLA COUNTY SURVEY 98-55-C,
  - UMATILLA COUNTY SURVEY 98-167-B,
  - UMATILLA COUNTY SURVEY 98-245-B,
  - UMATILLA COUNTY SURVEY 99-05-B,
  - UMATILLA COUNTY SURVEY 99-128-B,
  - UMATILLA COUNTY SURVEY 99-265-B,
  - UMATILLA COUNTY SURVEY 01-20-B,
  - UMATILLA COUNTY SURVEY 03-64-B,
  - UMATILLA COUNTY SURVEY 04-116-B,
  - UMATILLA COUNTY SURVEY 06-461-B
  - UMATILLA COUNTY SURVEY 08-89-B,
  - PARTITION PLAT 1994-24
  - PARTITION PLAT 1994-41
  - PARTITION PLAT 1998-04
  - PARTITION PLAT 1998-44
  - PARTITION PLAT 1999-03
  - PARTITION PLAT 2001-05
  - PARTITION PLAT 2008-11
  - 1974 SURVEY BY KRUMBEIN,
  - PLAT OF UMATILLA HEIGHTS, BK. 13, PG. 145
  - OREGON DEPT. OF TRANS. FIELD BOOK 1869
  - OREGON DEPT. OF TRANS. MAP 8B-18-20
  - OREGON DEPT. OF TRANS. MAP 8B-18-21



NARRATIVE

THE PURPOSE OF THIS SURVEY IS TO ESTABLISH HORIZONTAL CONTROL AND DEFINE THE LOCATION OF THE OREGON DEPARTMENT OF TRANSPORTATION (ODOT) RIGHT-OF-WAY BOUNDRY AND EASEMENTS ALONG THE COLUMBIA RIVER HIGHWAY CORRIDOR FROM THE UMATILLA COUNTY LINE (PLEASANTVIEW ROAD) TO THE CITY OF UMATILLA.

ENGINEER'S STATION 184+82.65 WAS LOCATED AT THE PROPORTIONATE DISTANCE BETWEEN MONUMENTS 1072 AND 1073 AS DESCRIBED BY ODOT FIELD BOOK 1869. THE RECORD OFFSET DISTANCE FROM SAID FIELD BOOK FOR MONUMENT 1063 (RPPOT 279+27.27, 89.20' RT.) WAS ALSO HELD. THIS PROVIDED THE BEST FIT WITH THE OTHER FOUND MONUMENTS FOR THE TANGENT FROM ENGINEER'S STATION 184+82.65 TO 332+42.83 (332+40.62). THE TANGENT FROM ENGINEER'S STATION 341+65.83 (341+63.95) TO 382+25.20 (382+34.79) USED THE BEST FIT OF MONUMENTS 1018 AND 1029. THE CURVE BETWEEN SAID TANGENTS UTILIZED THE RECORD DEGREE OF CURVE AND SPIRAL LENGTHS FROM ODOT MAP 8B-18-20. THE CURVE AHEAD OF ENGINEER'S STATION 382+25.20 USED THE RECORD DEGREE OF CURVE, DELTA ANGLE AND SPIRAL LENGTH FROM ODOT MAP 8B-18-21. THE RESULTING BEARING WAS CARRIED AHEAD TO ENGINEER'S STATION 391+78.94 (391+85.55). THE TANGENT FROM ENGINEER'S STATION 400+02.61 (400+09.09) TO 412+33.23 USED AN OFFSET OF 8.17' FROM MONUMENTS 1210 AND 21629 AS DESCRIBED BY UMATILLA COUNTY SURVEY 95-22-C. THE CURVE BETWEEN SAID TANGENTS USED THE RECORD DEGREE OF CURVE AND SPIRAL LENGTH.

THE BASIS OF BEARING FOR THIS SURVEY IS NETWORK POINT 1, THE NORTHWEST CORNER OF SECTION 22 AND NETWORK 17, THE SOUTHEAST CORNER OF SECTION 14. THE BEARING FROM THE RIGHT-OF-WAY MAP 8B-18-21 IS N89°32'21\"/>

ODOT REGION 5  
 3012 ISLAND AVE.  
 LA GRANDE, OR. 97850-9497

JULY 6, 2012  
 SHEET 1 OF 15

SEC. 13, 14, 15, 21, & 22, T. 5 N., R. 27 E., W.M.  
 SEC. 17, 18, & 19, T. 5 N., R. 28 E., W.M.

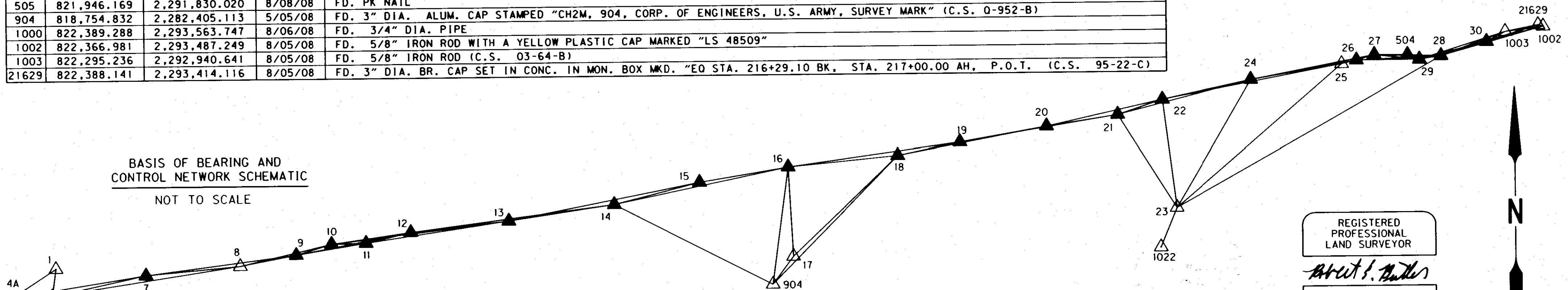
NETWORK POINT COORDINATE TABLE

PT. NO.	LDP NORTHING	LDP EASTING	DATE	DESCRIPTION
1	819,073.030	2,272,121.510	5/02/08	FD. 3 1/2" DIA. BR. CAP STAMPED "T5N, R27E, S16, S15, S21, AND S22, 1975" (C.S. D-43-AX)
2	817,755.855	2,272,143.977	5/02/08	FD. 8" DIA. CONCRETE MONUMENT WITH BRASS PLUG FOR THE NORTH WEST 1/16 CORNER.
3	816,440.973	2,272,161.611	5/02/08	FD. 5/8" REBAR FOR THE WEST 1/4 CORNER OF S21 AND S22
4A	818,663.350	2,271,492.800	5/02/08	SET 12" COMMON SPIKE
5	818,676.687	2,272,067.952	5/02/08	SET RAILROAD SPIKE
6	817,038.488	2,272,072.635	5/02/08	SET HUB AND TACK
7	818,964.098	2,273,414.297	5/02/08	SET 12" COMMON SPIKE
8	819,087.808	2,274,766.068	5/05/08	FD. 1 1/2" DIA. BRASS CAP, STAMPED "15, 22" ON 5-05-08 (C.S. D-43-AX)
9	819,240.791	2,275,565.509	5/05/08	SET HUB WITH DUPLEX NAIL, 14.0 FEET FROM EDGE OF PAVEMENT
10	819,397.147	2,276,078.084	5/05/08	FD. 5/8" IRON PIN ON 12-03-08 (O.D.O.T. FIELD BOOK NO. 1869)
11	819,407.800	2,276,573.880	5/05/08	SET 12" COMMON SPIKE
12	819,556.957	2,277,216.228	5/05/08	SET 12" COMMON SPIKE
13	819,708.278	2,278,628.424	5/05/08	SET 12" COMMON SPIKE
14	819,933.176	2,280,134.667	5/05/08	SET 12" COMMON SPIKE
15	820,242.532	2,281,364.815	5/05/08	SET 12" COMMON SPIKE
16	820,452.171	2,282,634.833	5/05/08	SET 12" COMMON SPIKE
17	819,158.140	2,282,703.410	5/05/08	FD. 8" DIA. CONC. MONUMENT WITH BRASS PLUG; SEC. COR. FOR T5N, R27E, S14, S13, S23, AND S24 (C.S. I-16-C)
18	820,603.284	2,284,210.269	5/05/08	SET 12" COMMON SPIKE
19	820,790.047	2,285,103.539	5/05/08	SET 12" COMMON SPIKE
20	821,004.038	2,286,348.037	5/05/08	SET 12" COMMON SPIKE
21	821,160.728	2,287,371.364	5/06/08	FD. 5/8" IRON ROD ON 5-06-08
22	821,371.643	2,288,016.114	5/06/08	SET 12" COMMON SPIKE
23	819,813.759	2,288,211.156	5/06/08	FD. 1/2" DIA. PIPE IN CONCRETE
24	821,643.943	2,289,287.190	5/06/08	SET 12" COMMON SPIKE
25	821,858.575	2,290,589.320	5/06/08	FD. 2 1/2" DIA. BR. CAP WITNESS COR. MKD. "UMATILLA COUNTY SURVEYOR"; 50.9 FT. S. OF CENTER OF SEC. 18 (KRUMBEIN 1974)
26	821,907.174	2,290,802.293	5/06/08	SET HUB AND TACK
27	821,983.804	2,291,059.332	5/06/08	SET HUB AND TACK
28	821,958.342	2,292,020.226	5/06/08	SET 12" COMMON SPIKE
29	821,912.043	2,291,709.944	5/06/08	SET HUB AND TACK
30	822,154.497	2,292,672.148	5/06/08	SET HUB AND TACK
504	821,978.182	2,291,540.571	5/06/08	SET HUB AND TACK
505	821,946.169	2,291,830.020	8/08/08	FD. PK NAIL
904	818,754.832	2,282,405.113	5/05/08	FD. 3" DIA. ALUM. CAP STAMPED "CH2M, 904, CORP. OF ENGINEERS, U.S. ARMY, SURVEY MARK" (C.S. Q-952-B)
1000	822,389.288	2,293,563.747	8/06/08	FD. 3/4" DIA. PIPE
1002	822,366.981	2,293,487.249	8/05/08	FD. 5/8" IRON ROD WITH A YELLOW PLASTIC CAP MARKED "LS 48509"
1003	822,295.236	2,292,940.641	8/05/08	FD. 5/8" IRON ROD (C.S. 03-64-B)
21629	822,388.141	2,293,414.116	8/05/08	FD. 3" DIA. BR. CAP SET IN CONC. IN MON. BOX MKD. "EQ STA. 216+29.10 BK. STA. 217+00.00 AH, P.O.T. (C.S. 95-22-C)

NETWORK DISTANCE AND BEARING TABLE

AT	TO	DISTANCE	BEARING
24	26	1,537.80	N. 80°08'38" E.
24	27	1,804.44	N. 79°08'37" E.
25	26	218.45	N. 77°08'44" E.
25	27	486.41	N. 75°04'51" E.
26	27	268.22	N. 73°23'57" E.
26	28	1,219.01	N. 87°35'39" E.
28	29	313.72	S. 81°30'47" W.
28	30	680.79	N. 73°15'14" E.
28	1002	1,522.87	N. 74°26'05" E.
28	1003	980.13	N. 69°53'46" E.
28	21629	1,458.65	N. 72°51'47" E.
29	26	907.66	S. 89°41'33" W.
29	27	654.56	N. 83°42'21" W.
29	30	992.28	N. 75°51'25" E.
27	28	961.23	S. 88°28'55" E.
504	26	741.69	S. 84°30'22" W.
504	27	481.27	N. 89°19'50" W.
504	28	480.07	S. 87°37'53" E.
504	29	181.83	S. 68°40'10" E.
30	1002	842.34	N. 75°23'20" E.
30	1003	303.14	N. 62°20'14" E.
30	21629	777.89	N. 72°31'15" E.
1003	1002	551.30	N. 82°31'20" E.
1003	21629	482.50	N. 78°53'54" E.
1002	29	1,834.61	S. 75°38'32" W.
1002	21629	76.13	N. 73°51'46" W.

BASIS OF BEARING AND CONTROL NETWORK SCHEMATIC  
NOT TO SCALE



NETWORK DISTANCE AND BEARING TABLE

AT	TO	DISTANCE	BEARING
1	4A	750.41	S. 56°54'39" W.
1	5	399.95	S. 07°41'44" W.
4A	3	2,320.83	S. 16°44'55" E.
4A	5	575.31	N. 88°40'17" E.
4A	6	1,725.22	S. 19°38'20" E.
4A	7	1,944.89	N. 81°06'15" E.
3	6	604.10	N. 08°28'10" W.
6	2	720.91	N. 05°40'45" E.
6	3	604.10	S. 08°28'10" E.
6	5	1,638.21	N. 00°09'49" W.
5	1	399.95	N. 07°41'44" E.
5	2	923.97	S. 04°43'10" E.
5	7	1,376.68	N. 77°56'58" E.
7	8	1,357.42	N. 84°46'15" E.
7	9	2,168.93	N. 82°40'14" E.
8	5	2,729.26	S. 81°20'10" W.
8	7	1,357.42	S. 84°46'15" W.
8	9	813.95	N. 79°10'00" E.
8	10	1,347.99	N. 76°44'00" E.

NETWORK DISTANCE AND BEARING TABLE

AT	TO	DISTANCE	BEARING
9	10	535.98	N. 73°02'10" E.
9	11	1,022.11	N. 80°35'45" E.
10	11	495.91	N. 88°46'08" E.
10	13	2,569.25	N. 83°02'40" E.
11	12	659.44	N. 76°55'38" E.
11	13	2,076.40	N. 81°40'46" E.
12	10	1,149.31	S. 82°00'25" W.
12	13	1,420.28	N. 83°53'02" E.
12	14	2,942.59	N. 82°39'16" E.
13	14	1,522.94	N. 81°30'28" E.
13	15	2,788.06	N. 78°57'09" E.
14	15	1,268.45	N. 75°53'02" E.
14	16	2,553.47	N. 78°16'22" E.
15	16	1,287.20	N. 80°37'36" E.
16	17	1,295.85	S. 03°02'00" E.
16	18	1,582.67	N. 84°31'15" E.
16	19	2,491.72	N. 82°12'24" E.
16	904	1,712.81	S. 07°42'27" W.
17	18	2,087.84	N. 46°11'51" E.

NETWORK DISTANCE AND BEARING TABLE

AT	TO	DISTANCE	BEARING
17	904	501.64	S. 36°29'15" W.
904	14	2,558.01	N. 62°34'15" W.
904	16	1,712.81	N. 07°42'27" E.
904	18	2,583.67	N. 44°19'15" E.
18	19	912.59	N. 78°11'27" E.
18	20	2,175.01	N. 79°22'56" E.
19	20	1,262.76	N. 80°14'36" E.
20	21	1,035.25	N. 81°17'40" E.
20	22	1,708.10	N. 77°34'19" E.
21	19	2,297.92	S. 80°43'01" W.
21	22	678.37	N. 71°53'08" E.
21	23	1,587.32	S. 31°56'32" E.
21	24	1,975.83	N. 75°50'38" E.
22	24	1,299.92	N. 77°54'30" E.
22	25	2,618.87	N. 79°17'04" E.
23	22	1,570.05	N. 07°08'10" W.
23	24	2,123.07	N. 30°27'10" E.
23	25	3,136.39	N. 49°18'36" E.
23	28	4,371.30	N. 60°37'10" E.

REGISTERED PROFESSIONAL LAND SURVEYOR

*Robert E. Butler*

OREGON  
 JULY 25, 1995  
 ROBERT E. BUTLER  
 2733

EXPIRES: 12/31/13

RECEIVED BY  
 Umatilla County Surveyor  
 Date: 7/19/2012  
 Recd By: S. Oua  
 No.: 13-102-B

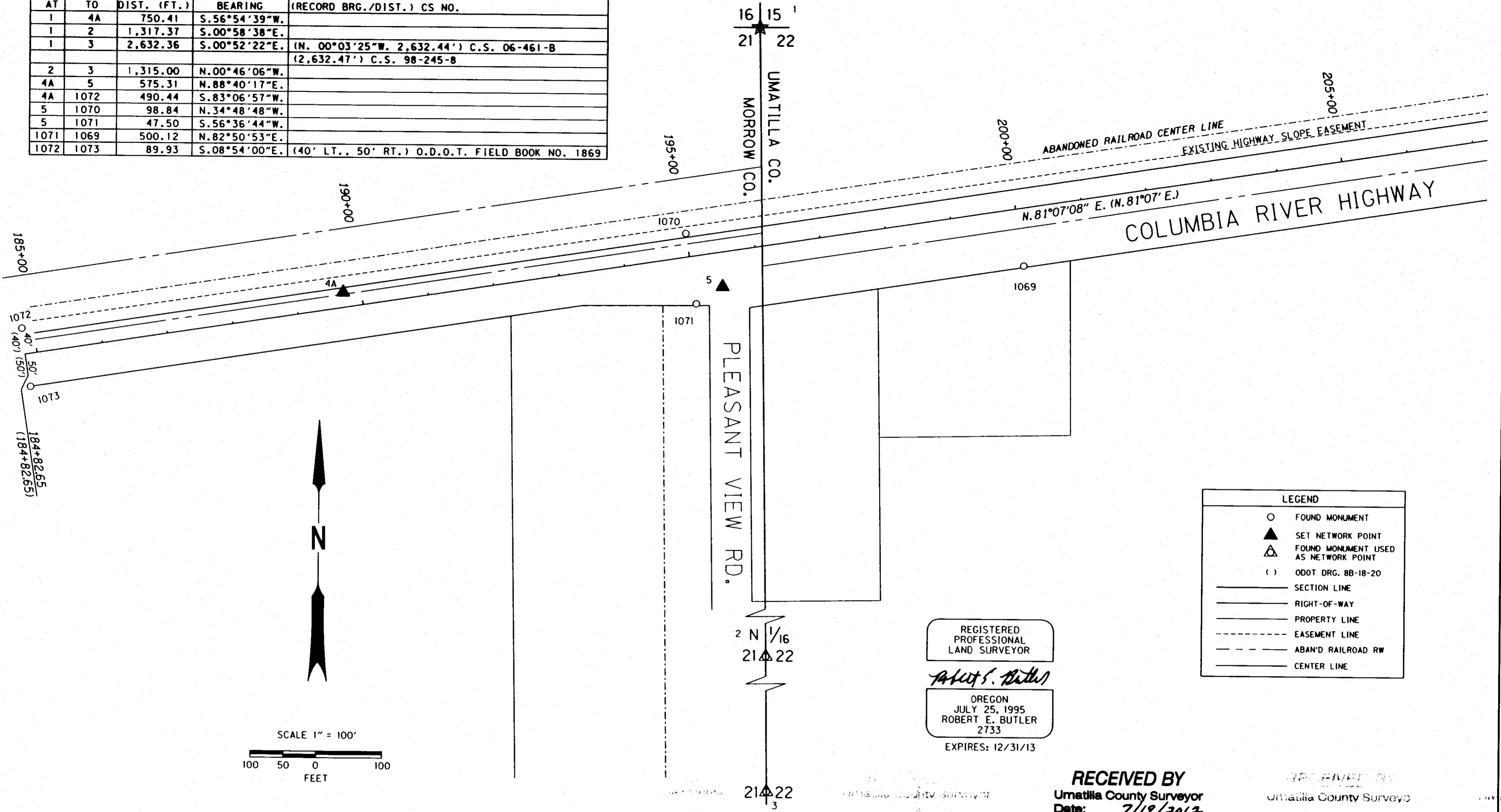
OREGON DEPARTMENT OF TRANSPORTATION  
 HORIZONTAL CONTROL AND RECOVERY MAP  
 U.S. 730: UMATILLA CO. LINE - UMATILLA SEC.  
 COLUMBIA RIVER HIGHWAY  
 UMATILLA COUNTY

ODOT REGION 5  
 3012 ISLAND AVE.  
 LA GRANDE, OR. 97850-9497

JULY 6, 2012  
 SHEET 2 OF 15

MONUMENT DISTANCE AND BEARING TABLE

AT	TO	DIST. (FT.)	BEARING	(RECORD BRG./DIST.) CS NO.
1	4A	750.41	S.56°54'39"W.	
1	2	1,317.37	S.00°58'38"E.	
1	3	2,632.36	S.00°52'22"E.	(N. 00°03'25"W. 2,632.44') C.S. 06-461-B (2,632.47') C.S. 98-245-8
2	3	1,315.00	N.00°46'06"W.	
4A	5	575.31	N.88°40'17"E.	
4A	1072	490.44	S.83°06'57"W.	
5	1070	98.84	N.34°48'48"W.	
5	1071	47.50	S.56°36'44"W.	
1071	1069	500.12	N.82°50'53"E.	
1072	1073	89.93	S.08°54'00"E.	(40' LT., 50' RT.) O.D.O.T. FIELD BOOK NO. 1869



NETWORK CONTROL & RECOVERED MONUMENTS

PT. NO.	LDP NORTHING	LDP EASTING	STATION	OFFSET	DATE	DESCRIPTION & REFERENCE DOCUMENTS
1	819,073.030	2,272,121.510	196+57.20	330.59 LT.	5/02/08	FD. 3 1/2" DIA. BR. CAP STAMPED "T5N, R27E, S16, S15, S21, AND S22, 1975" (C.S. D-43-AX)
2	817,755.855	2,272,143.977	194+76.06	974.27 RT.	5/02/08	FD. 8" DIA. CONC. MON. WITH BR. PLUG FOR THE N. 1/16 COR. 21 AND 22
3	816,440.973	2,272,161.611	192+90.48	2,276.11 RT.	5/02/08	FD. 5/8" REBAR FOR THE 1/4 CORNER OF S21 AND S22 (C.S. M-71-A)
4A	818,663.350	2,271,492.800	189+72.78	22.88 LT.	5/02/08	SET 12" COMMON SPIKE
5	818,676.687	2,272,067.952	195+43.10	52.74 RT.	5/02/08	SET RAILROAD SPIKE
1069	818,712.812	2,272,524.520	199+99.77	87.53 RT.	12/03/08	FD. 5/8" IRON PIN (200+00.00, 87.50 RT.) O.D.O.T. FIELD BOOK NO. 1869
1070	818,757.838	2,272,011.523	194+99.87	36.15 LT.	12/03/08	FD. 5/8" IRON PIN (195+00.00, 35.74 LT.) O.D.O.T. FIELD BOOK NO. 1869
1071	818,650.547	2,272,028.291	194+99.88	72.44 RT.	12/03/08	FD. 5/8" IRON PIN (195+00.00, 72.38 RT.) O.D.O.T. FIELD BOOK NO. 1869
1072	818,604.564	2,271,005.892	184+82.64	39.97 LT.	8/20/08	FD. 5/8" IRON PIN (182+82.65, 40.00 LT.) O.D.O.T. FIELD BOOK NO. 1869
1073	818,515.715	2,271,019.805	174+82.67	49.96 RT.	8/20/08	FD. 5/8" IRON PIN (182+82.65, 50.00 RT.) O.D.O.T. FIELD BOOK NO. 1869

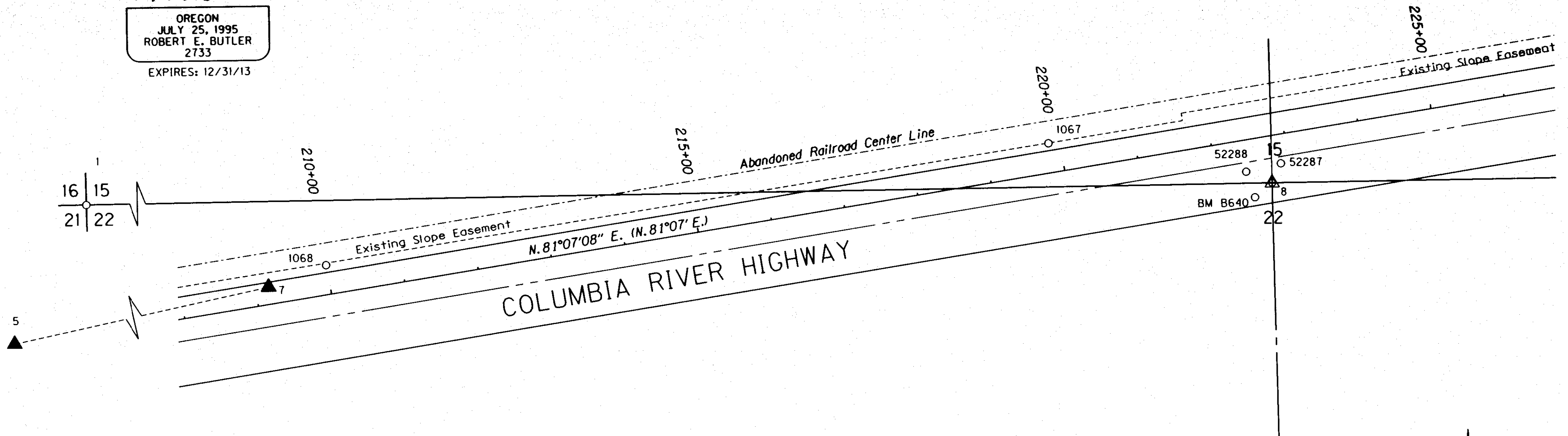
**OREGON DEPARTMENT OF TRANSPORTATION**

HORIZONTAL CONTROL AND RECOVERY MAP  
 U.S. 730: UMATILLA CO. LINE - UMATILLA SEC.  
 COLUMBIA RIVER HIGHWAY  
 UMATILLA COUNTY

ODOT REGION 5  
 3012 ISLAND AVE.  
 LA GRANDE, OR. 97850-9497

JULY 6, 2012  
 SHEET 3 OF 15

REGISTERED  
PROFESSIONAL  
LAND SURVEYOR  
*Robert E. Butler*  
OREGON  
JULY 25, 1995  
ROBERT E. BUTLER  
2733  
EXPIRES: 12/31/13



LEGEND	
○	FOUND MONUMENT
▲	SET NETWORK POINT
△	FOUND MONUMENT USED AS NETWORK POINT
( )	ODOT DRG. 8B-18-21
—	SECTION LINE
- - -	1/4 SECTION LINE
—	RIGHT-OF-WAY
—	PROPERTY LINE
- - -	EASEMENT LINE
- - -	ABAND RAILROAD RW
—	CENTER LINE

MONUMENT DISTANCE AND BEARING TABLE

AT	TO	DIST. (FT.)	BEARING	(RECORD BRG./DIST.) CS NO.
1	8	2,644.60	N.89°40'47"E.	(S. 89°30'10"E. 2,644.67') C.S. 06-461-B;
				(2,644.21') C.S. D-43-AX;
				(2,643.06') C.S. N-7-B
5	7	1,376.68	N.77°56'58"E.	
7	8	1,357.42	N.84°46'15"E.	
7	1068	83.32	N.69°37'18"E.	
1068	1067	985.43	N.81°06'55"E.	
1067	8	305.52	S.79°09'05"E.	
8	52287	29.06	N.25°19'39"E.	
8	52288	38.27	N.66°06'52"W.	
8	BM B640	30.41	S.50°49'18"W.	



SCALE 1" = 100'



RECEIVED BY

Umatilla County Surveyor  
Date: 7/19/2012  
Rec'd By: A. Ouse  
No.: 12-102-B

Umatilla County Surveyor  
Date: \_\_\_\_\_  
Rec'd By: \_\_\_\_\_  
No.: \_\_\_\_\_

NETWORK CONTROL & RECOVERED MONUMENTS

PT. NO.	LDP NORTHING	LDP EASTING	STATION	OFFSET	DATE	DESCRIPTION & REFERENCE DOCUMENTS
1	819,073.030	2,272,121.510	196+57.20	330.59 LT.	5/02/08	FD. 3 1/2" DIA. BR. CAP STAMPED "T5N, R27E, S16, S15, S21, AND S22, 1975" (C.S. D-43-AX)
5	818,676.687	2,272,067.952	195+43.10	52.74 RT.	5/02/08	SET RAILROAD SPIKE
7	818,964.098	2,273,414.297	209+17.67	23.37 LT.	5/02/08	SET 12" COMMON SPIKE
8	819,087.808	2,274,766.068	222+72.34	63.09 RT.	5/05/08	FD. 1 1/2" DIA. BRASS CAP, STAMPED "15, 22" (C.S. D-43-AX)
52287	819,114.074	2,274,778.499	222+88.67	39.06 RT.	6/01/09	FD. 1 1/4" DIA. YELLOW PLASTIC CAP MARKED "48509", REFERENCE POINT TO NET POINT 8
52288	819,103.305	2,274,731.073	222+40.16	42.38 RT.	6/01/09	FD. 1 1/4" DIA. YELLOW PLASTIC CAP MARKED "48509", REFERENCE POINT TO NET POINT 8
1067	819,145.312	2,274,466.010	219+84.75	40.05 LT.	8/20/08	FD. 5/8" IRON PIN (219+85.70, 40.00 LT.) O.D.O.T. FIELD BOOK NO. 1869
1068	818,993.113	2,273,492.407	209+99.33	39.88 LT.	8/20/08	FD. 5/8" IRON PIN (210+00.00, 40.00 LT.) O.D.O.T. FIELD BOOK NO. 1869
B640	819,068.595	2,274,742.492	222+46.08	78.43 RT.	8/20/08	FD. 3 1/2" DIA. BR. DISK MARKED "U.S. COAST GEODETIC SURVEY, B640, 1968"

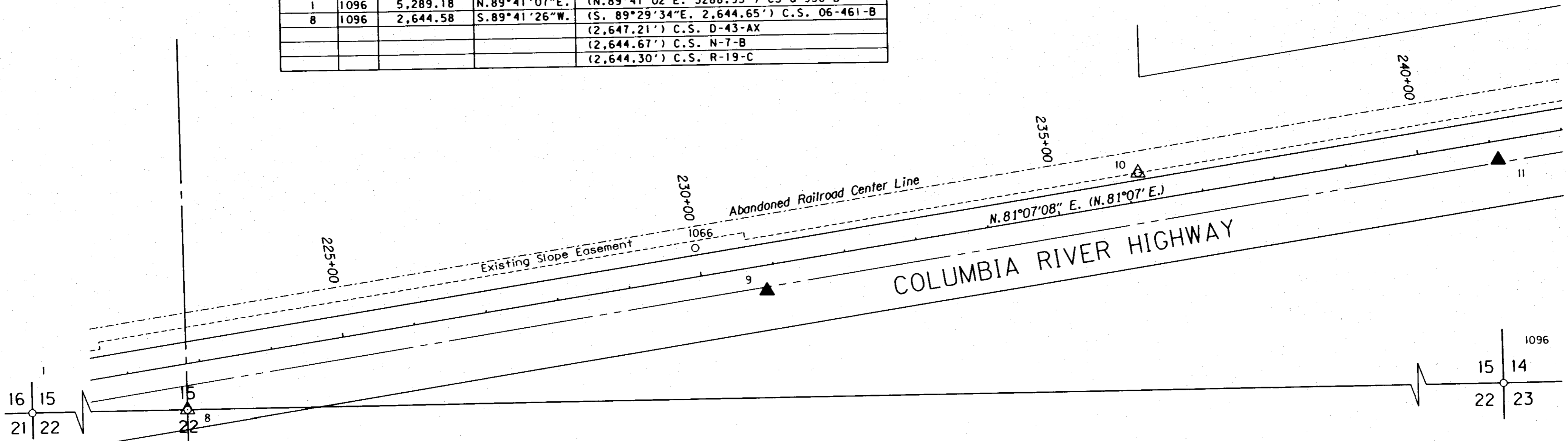


OREGON DEPARTMENT OF TRANSPORTATION  
HORIZONTAL CONTROL AND RECOVERY MAP  
U.S. 730: UMATILLA CO. LINE - UMATILLA SEC.  
COLUMBIA RIVER HIGHWAY  
UMATILLA COUNTY

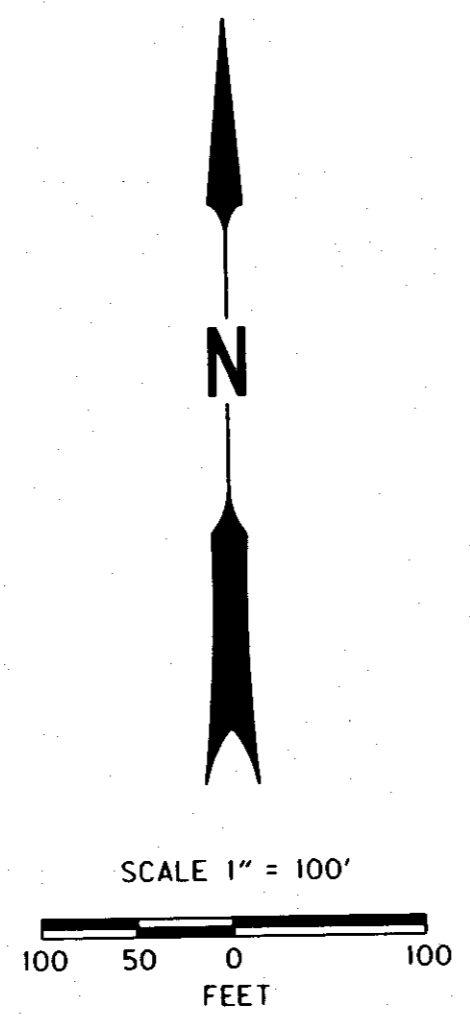
ODOT REGION 5  
3012 ISLAND AVE.  
LA GRANDE, OR. 97850-9497

MONUMENT DISTANCE AND BEARING TABLE

AT	TO	DIST. (FT.)	BEARING	(RECORD BRG./DIST.) CS NO.
8	9	813.95	N.79°10'00" E.	
9	1066	115.31	N.58°00'32" W.	
9	10	535.89	N.73°02'10" E.	
10	11	495.91	N.88°46'08" E.	
1	1096	5,289.18	N.89°41'07"E.	(N.89°41'02"E. 5288.95') CS 0-958-B
8	1096	2,644.58	S.89°41'26"W.	(S. 89°29'34"E. 2,644.65') C.S. 06-461-B (2,647.21') C.S. D-43-AX (2,644.67') C.S. N-7-B (2,644.30') C.S. R-19-C



LEGEND	
○	FOUND MONUMENT
▲	SET NETWORK POINT
△	FOUND MONUMENT USED AS NETWORK POINT
( )	ODOT DRG. 8B-18-21
—	SECTION LINE
- - -	1/4 SECTION LINE
— — —	RIGHT-OF-WAY
— — — —	PROPERTY LINE
- - - - -	EASEMENT LINE
- - - - -	ABAN'D RAILROAD RW
— — — —	CENTER LINE



REGISTERED PROFESSIONAL LAND SURVEYOR

*Robert E. Butler*

OREGON  
JULY 25, 1995  
ROBERT E. BUTLER  
2733  
EXPIRES: 12/31/13

RECEIVED BY  
Umatilla County Surveyor  
Date: 7/19/2012  
Rec'd By: *S. P...*  
No.: 12-102-B

NETWORK CONTROL & RECOVERED MONUMENTS

PT. NO.	LDP NORTHING	LDP EASTING	STATION	OFFSET	DATE	DESCRIPTION & REFERENCE DOCUMENTS
1	819,073.030	2,272,121.510	196+57.20	330.59 LT.	5/02/08	FD. 3 1/2" DIA. BR. CAP STAMPED "T5N, R27E, S16, S15, S21, AND S22, 1975" (C.S. D-43-AX)
8	819,087.808	2,274,766.068	222+72.34	63.09 RT.	5/05/08	FD. 1 1/2" DIA. BRASS CAP, STAMPED "15, 22" (C.S. D-43-AX)
9	819,240.791	2,275,565.509	230+85.81	35.36 RT.	5/05/08	SET HUB WITH DUPLEX NAIL, 14.0 FT. FROM EDGE OF PAVEMENT
10	819,397.147	2,276,078.084	236+16.38	39.99 LT.	5/05/08	FD. 5/8" IRON PIN ON (236+09.77, 40.00 LT.) O.D.O.T. FIELD BOOK NO. 1869
11	819,407.800	2,276,573.880	241+07.88	26.03 RT.	5/05/08	SET 12" COMMON SPIKE
1066	819,301.882	2,275,467.710	229+98.62	40.09 LT.	12/03/08	FD. 5/8" IRON PIN (230+00.00, 40.00 LT.) O.D.O.T. FIELD BOOK NO. 1869
1096	819,102.091	2,277,410.610	248+87.38	457.25 RT.	6/01/09	FD. CONCRETE MONUMENT WITH BRASS PLUG (C.S. 1-16-C)



OREGON DEPARTMENT OF TRANSPORTATION  
HORIZONTAL CONTROL AND RECOVERY MAP  
U.S. 730: UMATILLA CO. LINE - UMATILLA SEC.  
COLUMBIA RIVER HIGHWAY  
UMATILLA COUNTY

ODOT REGION 5  
3012 ISLAND AVE.  
LA GRANDE, OR. 97850-9497

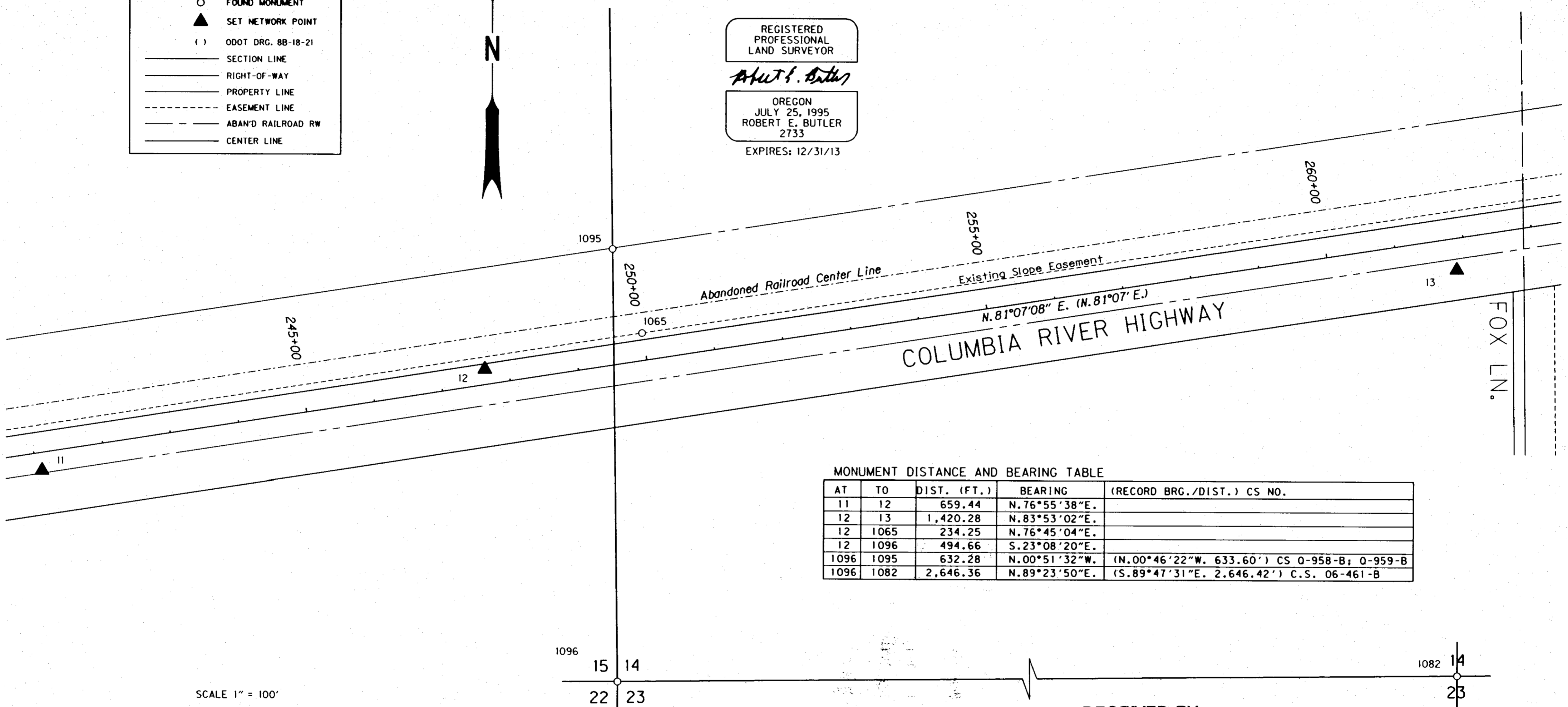
JULY 6, 2012  
SHEET 5 OF 15

SEC. 14 & 15, T. 5 N., R. 27 E., W.M.

LEGEND	
○	FOUND MONUMENT
▲	SET NETWORK POINT
( )	ODOT DRG. 88-18-21
—	SECTION LINE
—	RIGHT-OF-WAY
—	PROPERTY LINE
- - -	EASEMENT LINE
- - -	ABAN'D RAILROAD RW
—	CENTER LINE

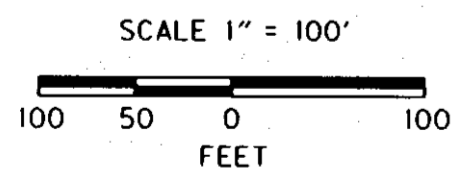


REGISTERED  
PROFESSIONAL  
LAND SURVEYOR  
*Robert E. Butler*  
OREGON  
JULY 25, 1995  
ROBERT E. BUTLER  
2733  
EXPIRES: 12/31/13



MONUMENT DISTANCE AND BEARING TABLE

AT	TO	DIST. (FT.)	BEARING	(RECORD BRG./DIST.) CS NO.
11	12	659.44	N. 76°55'38"E.	
12	13	1,420.28	N. 83°53'02"E.	
12	1065	234.25	N. 76°45'04"E.	
12	1096	494.66	S. 23°08'20"E.	
1096	1095	632.28	N. 00°51'32"W.	(N. 00°46'22"W. 633.60') CS 0-958-B; 0-959-B
1096	1082	2,646.36	N. 89°23'50"E.	(S. 89°47'31"E. 2,646.42') C.S. 06-461-B



RECEIVED BY  
Umatilla County Surveyor  
Date: 7/19/2012  
Rec'd By: *S. Res*  
No.: 12-102-B

NETWORK CONTROL & RECOVERED MONUMENTS

PT. NO.	LDP NORTHING	LDP EASTING	STATION	OFFSET	DATE	DESCRIPTION & REFERENCE DOCUMENTS
11	819,407.800	2,276,573.880	241+07.88	26.03 RT.	5/05/08	SET 12" COMMON SPIKE
12	819,556.957	2,277,216.228	247+65.55	22.17 LT.	5/05/08	SET 12" COMMON SPIKE
13	819,708.278	2,278,628.424	261+84.18	46.34 RT.	5/05/08	SET 12" COMMON SPIKE
1065	819,610.643	2,277,444.242	249+99.12	40.01 LT.	12/03/08	FD. 5/8" IRON PIN (250+00.00, 40.00 LT.) O.D.O.T. FIELD BOOK NO. 1869
1082	819,129.925	2,280,056.825	275+06.17	838.29 RT.	6/01/09	FD. 5/8" IRON ROD W/METAL CASING
1095	819,734.305	2,277,401.132	249+75.62	168.84 LT.	8/25/08	FD. IRON PIPE WITH BRASS WASHER AND SCREW (C.S. 0-959-B)
1096	819,102.091	2,277,410.610	248+87.38	457.25 RT.	6/01/09	FD. CONCRETE MONUMENT WITH BRASS PLUG (C.S. 1-16-C)

**T** OREGON DEPARTMENT OF TRANSPORTATION  
HORIZONTAL CONTROL AND RECOVERY MAP  
U.S. 730: UMATILLA CO. LINE - UMATILLA SEC.  
COLUMBIA RIVER HIGHWAY  
UMATILLA COUNTY

ODOT REGION 5  
3012 ISLAND AVE.  
LA GRANDE, OR. 97850-9497

MONUMENT DISTANCE AND BEARING TABLE

AT	TO	DIST. (FT.)	BEARING	(RECORD BRG./DIST.) CS NO.
13	14	1,522.94	N.81°30'28"E.	
13	1093	312.54	N.65°02'17"E.	
1094	1093	129.92	S.08°50'52"E.	(N.08°09'00"W. 130.00') CS 94-148-A
1093	1092	376.04	N.81°09'18"E.	(N.81°51'59"E. 375.96') CS 94-148-A
1090	1064	52.61	N.81°15'35"E.	
1092	1064	190.91	N.81°08'37"E.	(N.81°51'00"E. 190.92') CS 94-148-A
1064	A640	116.98	N.83°00'08"E.	
1064	1091	188.48	N.81°08'34"E.	(N.81°51'00"E. 188.42') CS 94-148-A
1091	1089	239.13	N.81°06'44"E.	(S.81°51'00"E. 239.14') CS 99-265-B; (N.81°51'49"E. 239.19') CS 97-182-B
1089	55858	257.26	N.81°07'20"E.	(S.81°51'00"E. 257.33') CS 99-265-B; (N.81°50'50"E. 258.25') CS 97-182-B
55858	1088	300.57	N.81°08'33"E.	(S.81°51'00"E. 300.62') CS 99-265-B; (N.81°52'28"E. 300.49') CS 97-182-B
14	55858	100.85	N.07°57'52"E.	
14	1087	100.07	S.61°36'40"W.	
1087	1082	755.74	S.00°46'23"E.	(S.00°02'29"E. 755.56') CS 97-182-B
1087	1063	313.06	N.80°57'15"E.	
1087	1086	351.52	N.81°07'05"E.	(N.81°51'00"E. 351.52') CS 97-182-B
1063	1086	38.47	N.82°27'09"E.	

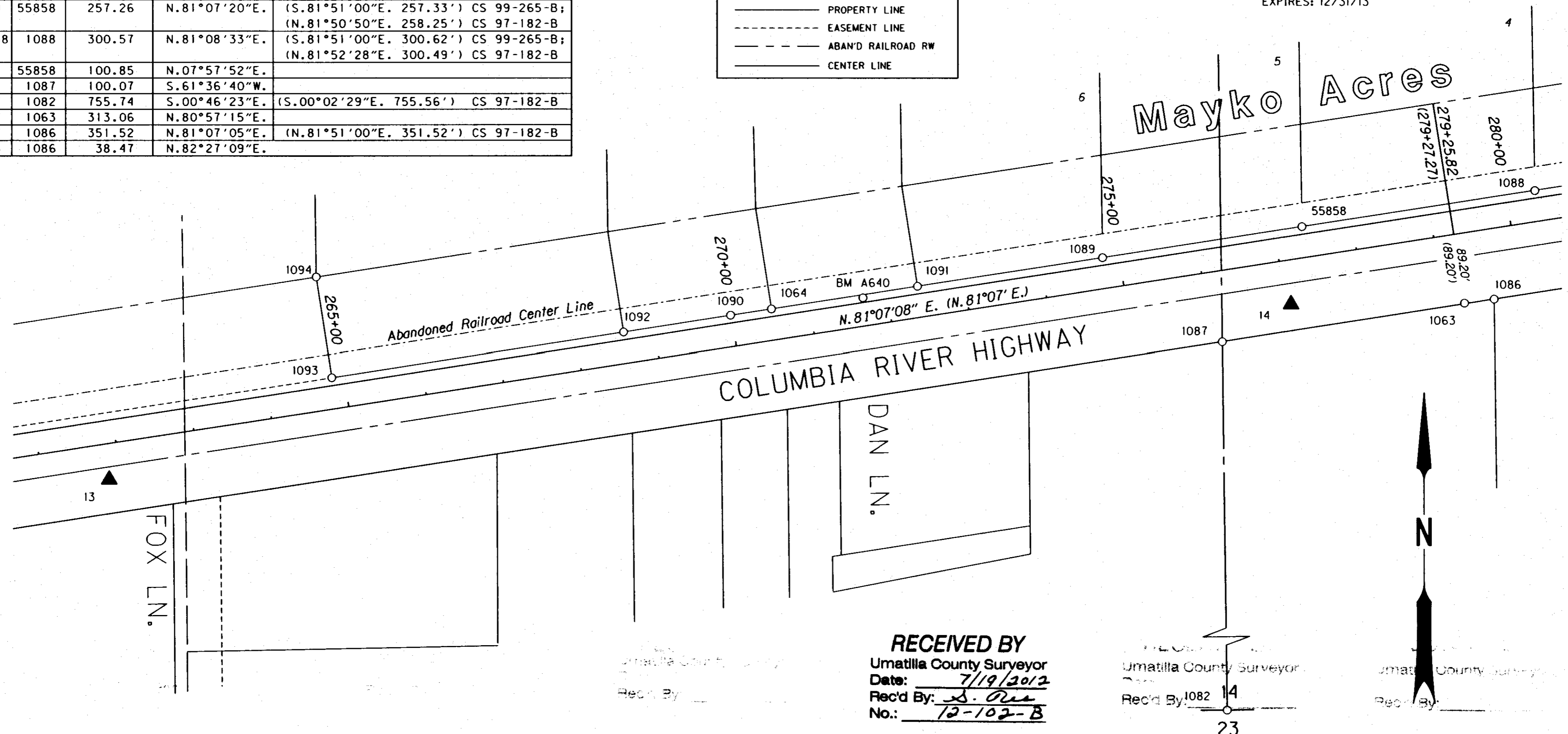
**LEGEND**

- FOUND MONUMENT
- ▲ SET NETWORK POINT
- ( ) ODOT FIELD BOOK 1869, ODOT ORG. 88-18-21
- 1/4 SECTION LINE
- 1/6 SECTION LINE
- RIGHT-OF-WAY
- PROPERTY LINE
- EASEMENT LINE
- ABAND RAILROAD RW
- CENTER LINE

REGISTERED PROFESSIONAL LAND SURVEYOR  
*Robert E. Butler*

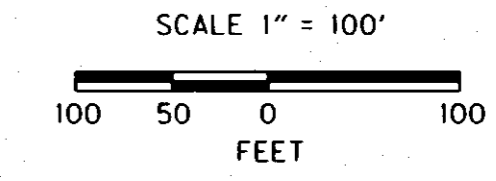
OREGON  
JULY 25, 1995  
ROBERT E. BUTLER  
2733

EXPIRES: 12/31/13



**RECEIVED BY**  
Umatilla County Surveyor  
Date: 7/19/2012  
Rec'd By: S. Oles  
No.: 12-102-B

Umatilla County Surveyor  
Date: 1082 14  
Rec'd By: 23



NETWORK CONTROL & RECOVERED MONUMENTS

PT. NO.	LDP NORTHING	LDP EASTING	STATION	OFFSET	DATE	DESCRIPTION & REFERENCE DOCUMENTS
13	819,708.278	2,278,628.424	261+84.18	46.34 RT.	5/05/08	SET 12" COMMON SPIKE
14	819,933.176	2,280,134.667	277+07.08	56.68 RT.	5/05/08	SET 12" COMMON SPIKE
1063	819,934.817	2,280,355.798	279+25.82	89.20 RT.	12/03/08	FD. 5/8" IRON PIN (279+27.27, 89.20 RT.) O.D.O.T. FIELD BOOK NO. 1869
1064	819,927.388	2,279,471.971	270+51.44	39.91 LT.	8/22/08	FD. 5/8" IRON PIN ON (C.S. 94-148-A)
1082	819,129.925	2,280,056.825	275+06.17	838.29 RT.	6/01/09	FD. 5/8" IRON ROD W/METAL CASING
1086	819,939.870	2,280,393.934	279+64.28	90.10 RT.	8/21/08	FD. 5/8" IRON ROD WITH PLASTIC YELLOW CAP (C.S. 97-182-B)
1087	819,885.596	2,280,046.629	276+12.75	90.10 RT.	8/21/08	FD. 5/8" IRON ROD WITH PLASTIC YELLOW CAP (C.S. 97-182-B)
1088	820,079.337	2,280,445.626	280+36.88	39.72 LT.	8/21/08	FD. 5/8" IRON ROD
1089	819,993.353	2,279,894.461	274+79.05	39.86 LT.	8/21/08	FD. 5/8" IRON ROD WITH 1 1/4" YELLOW CAP (C.S. 99-265-B)
55858	820,033.056	2,280,148.641	277+36.31	39.84 LT.	6/01/09	FD. 5/8" IRON ROD (C.S. 99-265-B)
1090	819,919.393	2,279,419.971	269+98.83	40.04 LT.	12/22/08	FD. IRON PIN (270+00.00, 40.00 LT.) O.D.O.T. FIELD BOOK NO. 1869
1091	819,956.408	2,279,658.199	272+39.91	39.83 LT.	8/25/08	FD. 5/8" IRON ROD (C.S. 94-148-A)
1092	819,897.996	2,279,283.339	268+60.53	39.99 LT.	8/25/08	FD. 5/8" IRON ROD (C.S. 94-148-A)
1093	819,840.175	2,278,911.769	264+84.49	40.23 LT.	8/25/08	FD. 5/8" IRON ROD WITH A METAL TAG MARKED "951" (C.S. 94-148-A)
1094	819,968.550	2,278,891.786	264+84.56	170.15 LT.	8/25/08	FD. IRON PIPE WITH BRASS WASHER AND SCREW (C.S. 0-959-B)
A640	819,941.639	2,279,588.077	271+68.36	36.06 LT.	8/25/08	FD. 3 1/2" DIA. BR. DISK IN GOOD CONDITION MKD. "U.S. COAST GEODETIC, A640"

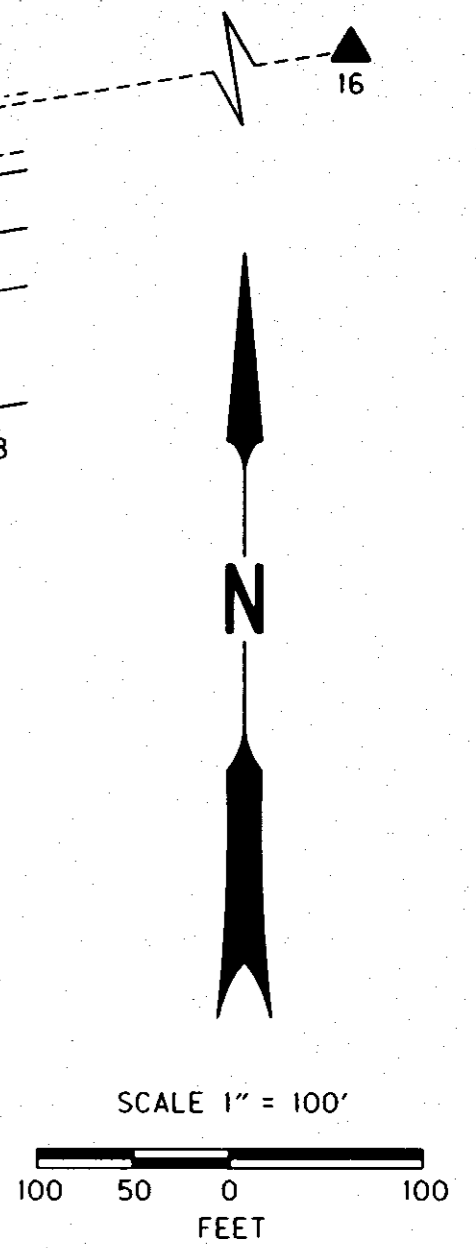
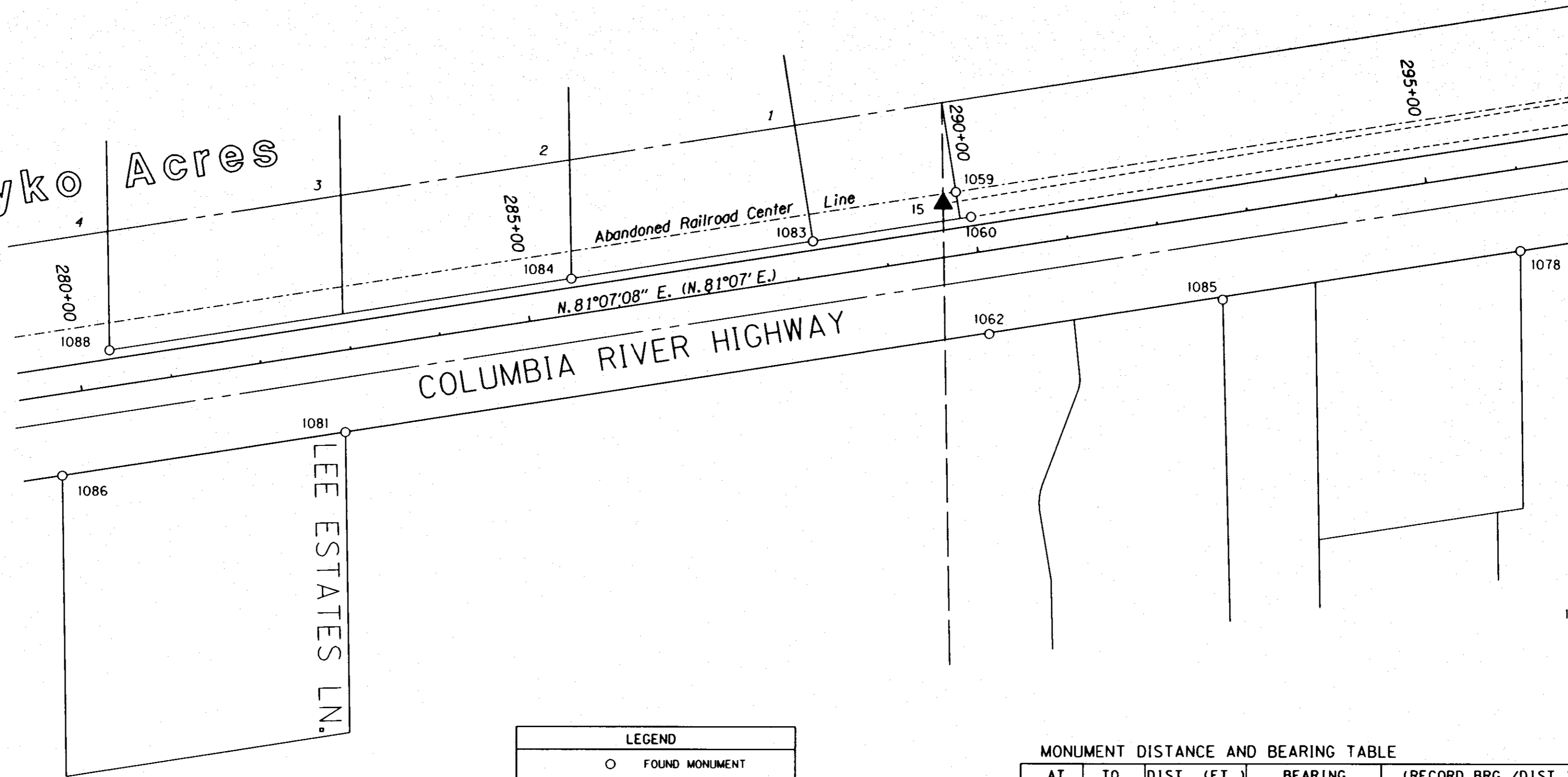
**OREGON DEPARTMENT OF TRANSPORTATION**

HORIZONTAL CONTROL AND RECOVERY MAP  
U.S. 730: UMATILLA CO. LINE - UMATILLA SEC.  
COLUMBIA RIVER HIGHWAY  
UMATILLA COUNTY

ODOT REGION 5  
3012 ISLAND AVE.  
LA GRANDE, OR. 97850-9497

JULY 6, 2012  
SHEET 7 OF 15

Mayko Acres



LEGEND	
○	FOUND MONUMENT
▲	SET NETWORK POINT
( )	ODOT DRG. 8B-18-21
---	1/6 SECTION LINE
---	RIGHT-OF-WAY
---	PROPERTY LINE
---	EASEMENT LINE
---	ABAND RAILROAD RW
---	CENTER LINE

MONUMENT DISTANCE AND BEARING TABLE

AT	TO	DIST. (FT.)	BEARING	(RECORD BRG./DIST.) CS NO.
14	15	1,268.45	N. 75° 53' 02" E.	
14	1088	343.60	N. 64° 49' 30" E.	
14	1086	259.35	N. 88° 31' 15" E.	
1088	1084	515.49	N. 81° 06' 29" E.	(S. 81° 51' 00" E. 515.54) CS 99-265-B
1088	1083	785.04	N. 81° 06' 40" E.	(N. 81° 51' 00" E. 785.04') CS 97-182-B
1084	1083	269.54	N. 81° 07' 00" E.	(S. 81° 51' 00" E. 269.51) CS 99-265-B
1083	1060	176.40	N. 81° 04' 19" E.	
1060	1059	32.30	N. 31° 22' 35" W.	
15	16	1,287.20	N. 80° 37' 36" E.	
15	1060	33.94	S. 64° 40' 49" E.	
1086	1081	315.79	N. 81° 06' 45" E.	(N. 81° 51' 00" E. 315.77) CS 97-182-B
1081	1062	718.25	N. 81° 12' 26" E.	
1062	1085	260.31	N. 81° 33' 45" E.	(N. 82° 19' 08" E. 260.43') PP 1994-41
1085	1078	331.97	N. 80° 35' 03" E.	

REGISTERED PROFESSIONAL LAND SURVEYOR  
 Robert E. Butler  
 OREGON JULY 25, 1995  
 Umatilla County Surveyor  
 ROBERT E. BUTLER  
 2733  
 EXPIRES: 12/31/13

RECEIVED BY  
 Umatilla County Surveyor  
 Date: 7/19/2012  
 Recd By: S. Lee  
 No.: 12-102-B

NETWORK CONTROL & RECOVERED MONUMENTS

PT. NO.	LDP NORTHING	LDP EASTING	STATION	OFFSET	DATE	DESCRIPTION & REFERENCE DOCUMENTS
14	819,933.176	2,280,134.667	277+07.08	56.68 RT.	5/05/08	SET 12" COMMON SPIKE
15	820,242.532	2,281,364.815	289+70.25	59.05 RT.	5/05/08	SET 12" COMMON SPIKE
16	820,452.171	2,282,634.833	302+57.40	70.10 LT.	5/05/08	SET 12" COMMON SPIKE
1059	820,255.595	2,281,378.677	289+85.95	69.82 LT.	8/13/08	FD. 5/8" IRON ROD W/1 1/4" DIA. YELLOW PLASTIC CAP MARKED "LS 48509"
1060	820,228.017	2,281,395.495	289+98.31	39.97 LT.	12/03/08	FD. 5/8" IRON PIN (290+00.00 CONST, 40.00 LT.) O.D.O.T. FIELD BOOK NO. 1869
1062	820,098.450	2,281,415.739	289+98.31	91.17 RT.	12/03/08	FD. 5/8" IRON PIN (290+00.00 CONST, 91.20 RT.) O.D.O.T. FIELD BOOK NO. 1869
1078	820,190.956	2,282,000.726	295+90.57	90.08 RT.	8/21/08	FD. 5/8" IRON ROD WITH BROKEN PLASTIC YELLOW CAP
1081	819,988.658	2,280,705.933	282+80.07	90.06 RT.	8/21/08	FD. 5/8" IRON ROD WITH BROKEN PLASTIC YELLOW CAP (C.S. 97-182-B)
1083	820,200.641	2,281,221.236	288+21.92	39.83 RT.	8/21/08	FD. 5/8" IRON ROD (C.S. 99-265-B)
1084	820,159.017	2,280,954.925	285+52.38	39.82 LT.	8/21/08	FD. 5/8" IRON ROD (C.S. 99-265-B)
1085	820,136.645	2,281,673.228	292+58.61	93.18 RT.	8/21/08	FD. 5/8" IRON ROD
1086	819,939.870	2,280,393.934	279+64.28	90.10 RT.	8/21/08	FD. 5/8" IRON ROD WITH PLASTIC YELLOW CAP (C.S. 97-182-B)
1088	820,079.337	2,280,445.626	280+36.88	39.72 RT.	8/21/08	FD. 5/8" IRON ROD

**OREGON DEPARTMENT OF TRANSPORTATION**  
 HORIZONTAL CONTROL AND RECOVERY MAP  
 U.S. 730: UMATILLA CO. LINE - UMATILLA SEC.  
 COLUMBIA RIVER HIGHWAY  
 UMATILLA COUNTY

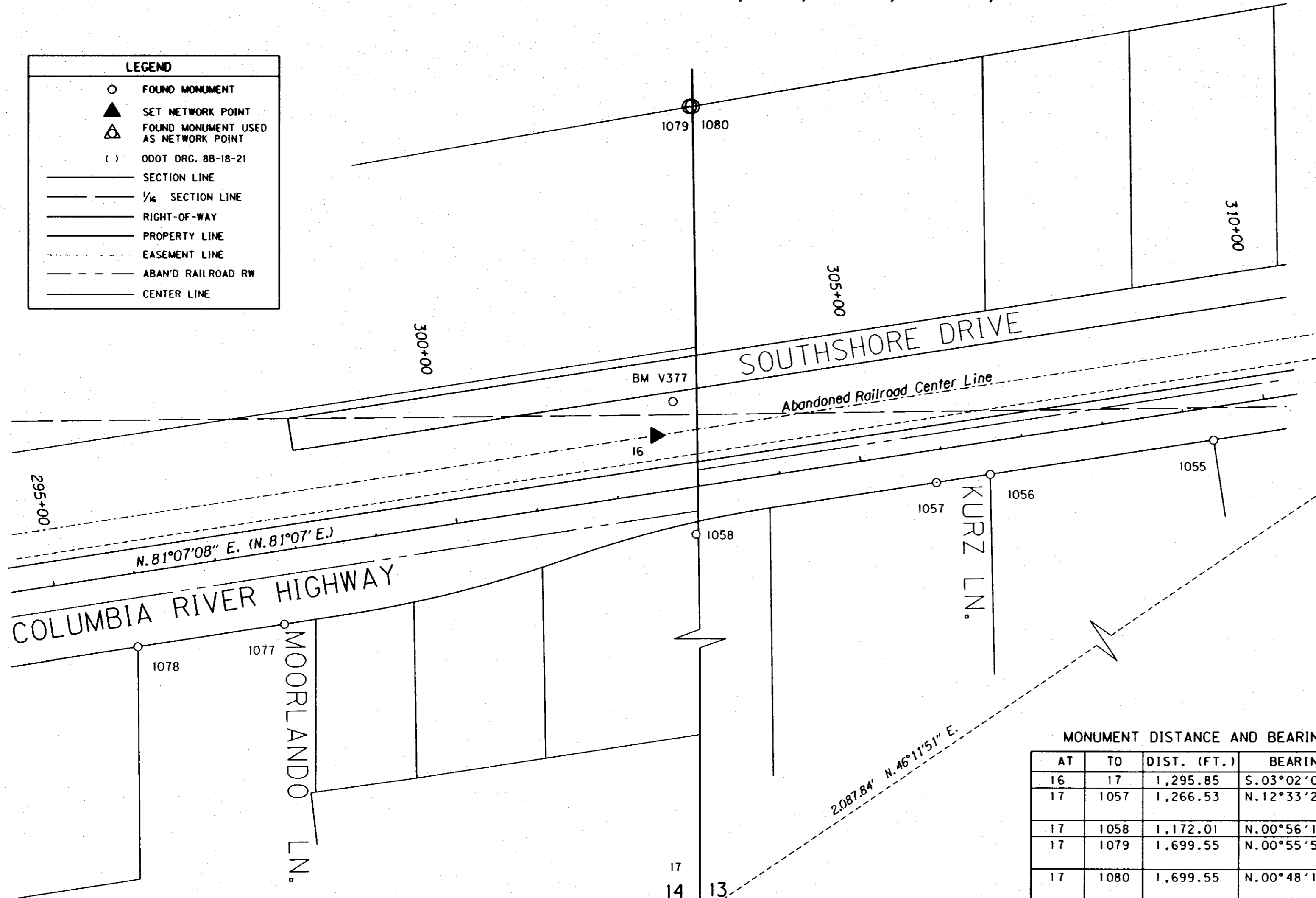
ODOT REGION 5  
 3012 ISLAND AVE.  
 LA GRANDE, OR. 97850-9497

JULY 6, 2012  
 SHEET 8 OF 15



LEGEND	
○	FOUND MONUMENT
▲	SET NETWORK POINT
△	FOUND MONUMENT USED AS NETWORK POINT
( )	ODOT DRG. 8B-18-21
—	SECTION LINE
—	1/16 SECTION LINE
—	RIGHT-OF-WAY
—	PROPERTY LINE
---	EASEMENT LINE
---	ABAND' RAILROAD RW
---	CENTER LINE

REGISTERED PROFESSIONAL LAND SURVEYOR  
*Robert E. Butler*  
 OREGON  
 JULY 25, 1995  
 ROBERT E. BUTLER  
 2733  
 EXPIRES: 12/31/13



MONUMENT DISTANCE AND BEARING TABLE

AT	TO	DIST. (FT.)	BEARING	(RECORD BRG./DIST.) CS NO.
16	17	1,295.85	S.03°02'00"E.	
17	1057	1,266.53	N.12°33'24"E.	(N.00°09'08"W. 1,190.51', N.81°53'39"E. 298.32') CS 95-136-B
17	1058	1,172.01	N.00°56'11"W.	(N.00°12'15"W. 1,071.89') CS 98-167-B
17	1079	1,699.55	N.00°55'52"W.	(N.00°09'08"W. 1,699.55') CS 95-136-B; (N.00°09'13"W. 1,699.62') PP 1998-04
17	1080	1,699.55	N.00°48'15"W.	(N.00°47'15"W. 1,699.93') CS 0-959-B; CS 0-952-B
1058	1079	527.54	N.00°55'10"W.	
1058	1080	527.54	N.00°30'38"W.	
1079	1080	3.76	N.89°11'52"E.	
1058	1057	307.46	N.77°40'09"E.	
1056	1057	66.59	S.81°06'50"W.	(S.81°57'41"W. 66.57') PP 1998-44; PP 1994-24
1056	1055	277.00	N.81°09'50"E.	(N.81°57'41"E. 277.11') PP 1998-44

RECEIVED BY  
 Umatilla County Surveyor  
 Date: 7/19/2012  
 Recd By: S. Glee  
 No.: 12-102-B

RECEIVED BY  
 Umatilla County Surveyor  
 Date:

RECEIVED BY  
 Umatilla County Surveyor  
 Date:

NETWORK CONTROL & RECOVERED MONUMENTS

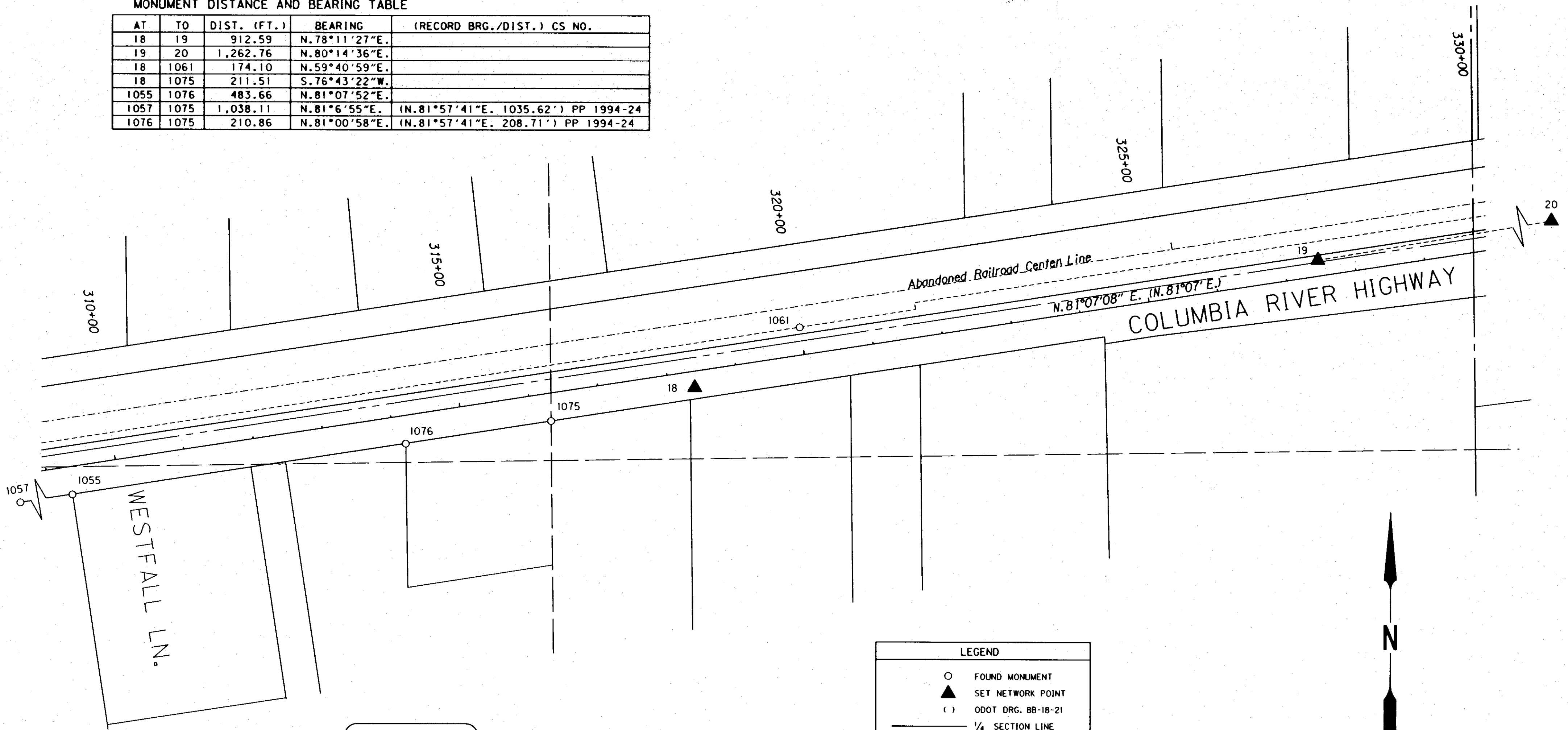
PT. NO.	LDP NORTHING	LDP EASTING	STATION	OFFSET	DATE	DESCRIPTION & REFERENCE DOCUMENTS
16	820,452.171	2,282,634.833	302+57.40	70.10 LT.	5/05/08	SET 12" COMMON SPIKE
17	819,158.140	2,282,703.410	301+25.39	1,219.00 RT.	5/05/08	FD. 8" DIA. CONC. MON. /BR. PLUG FOR SEC. COR. OF S14, S13, S23, & S24, T 5 N, R 27 E (C.S. 1-16-C)
18	820,603.284	2,284,210.269	318+37.28	23.82 RT.	5/05/08	SET 12" COMMON SPIKE
904	818,754.832	2,282,405.113	297+68.39	1,571.42 RT.	5/05/08	FD. 3" DIA. ALUM. CAP STAMPED "CH2M, 904, CORP. OF ENGINEERS, U.S. ARMY, SURVEY MARK" (C.S. 0-952-B)
1055	820,447.214	2,283,318.267	309+31.87	40.30 RT.	8/20/08	FD. IRON ROD WITH MELTED YELLOW CAP
1056	820,404.663	2,283,044.550	306+54.87	40.09 RT.	8/20/08	FD. IRON ROD WITH YELLOW CAP MARKED "EDWARDS 951"
1057	820,394.377	2,282,978.761	305+88.28	40.09 RT.	8/20/08	FD. 1/2" IRON ROD (NOTED ON CS 95-136-B)
1058	820,329.999	2,282,684.257	302+87.37	58.23 RT.	8/20/08	FD. IRON ROD WITH YELLOW CAP MARKED "LS 2830" (C.S. 98-167-B)
1077	820,219.002	2,282,179.768	297+71.79	90.01 RT.	8/21/08	FD. IRON ROD WITH YELLOW CAP MARKED "EDWARDS 951"
1078	820,190.956	2,282,000.726	295+90.57	90.08 RT.	8/21/08	FD. 5/8" IRON ROD WITH BROKEN PLASTIC YELLOW CAP
1079	820,857.467	2,282,675.792	303+60.44	464.22 LT.	8/21/08	FD. 1 1/2" IRON PIPE WITH BRASS SCREW AND WASHER (C.S. 0-959-B)
1080	820,857.520	2,282,679.556	303+64.17	463.69 LT.	8/21/08	FD. 3 1/2" DIA. ALUMINIUM CAP MARKED "14-13" (C.S. 0-959-B)
V377	820,494.137	2,282,655.661	302+84.46	108.35 LT.	8/21/08	FD. 3 1/2" DIA. BRASS DISK IN GOOD CONDITION MARKED "U.S. COAST GEODETIC SURVEY, V377, 1943"

OREGON DEPARTMENT OF TRANSPORTATION  
 HORIZONTAL CONTROL AND RECOVERY MAP  
 U.S. 730: UMATILLA CO. LINE - UMATILLA SEC.  
 COLUMBIA RIVER HIGHWAY  
 UMATILLA COUNTY

ODOT REGION 5  
 3012 ISLAND AVE.  
 LA GRANDE, OR. 97850-9497

MONUMENT DISTANCE AND BEARING TABLE

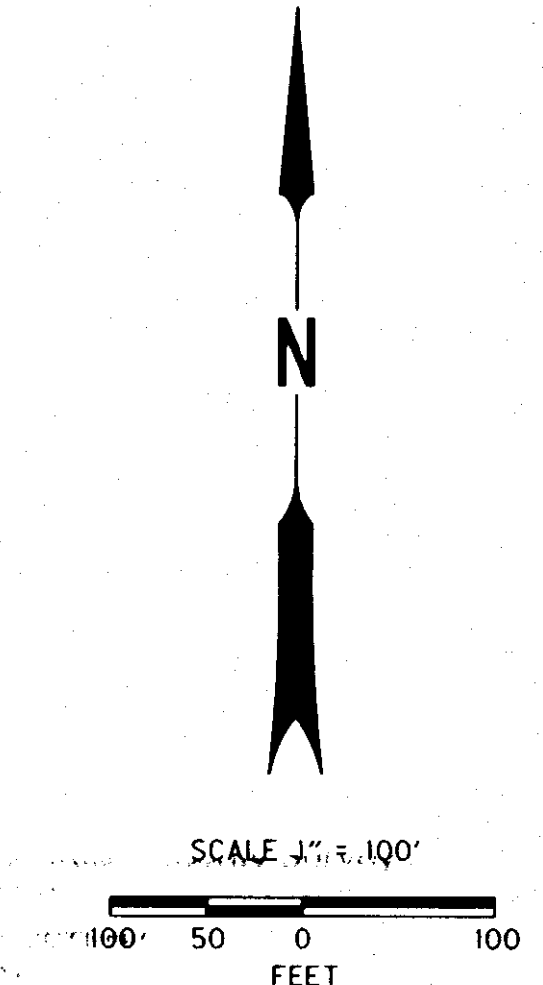
AT	TO	DIST. (FT.)	BEARING	(RECORD BRG./DIST.) CS NO.
18	19	912.59	N.78°11'27"E.	
19	20	1,262.76	N.80°14'36"E.	
18	1061	174.10	N.59°40'59"E.	
18	1075	211.51	S.76°43'22"W.	
1055	1076	483.66	N.81°07'52"E.	
1057	1075	1,038.11	N.81°6'55"E.	(N.81°57'41"E. 1035.62') PP 1994-24
1076	1075	210.86	N.81°00'58"E.	(N.81°57'41"E. 208.71') PP 1994-24



REGISTERED PROFESSIONAL LAND SURVEYOR  
*Robert E. Butler*  
 OREGON  
 JULY 25, 1995  
 ROBERT E. BUTLER  
 2733  
 EXPIRES: 12/31/13

RECEIVED BY  
 Umatilla County Surveyor  
 Date: 7/19/2012  
 Rec'd By: S. Res  
 No.: 12-102-B

LEGEND	
○	FOUND MONUMENT
▲	SET NETWORK POINT
( )	ODOT DRG. 88-18-21
—	1/4 SECTION LINE
---	1/6 SECTION LINE
---	RIGHT-OF-WAY
---	PROPERTY LINE
---	EASEMENT LINE
---	ABAND' RAILROAD RW
---	CENTER LINE



NETWORK CONTROL & RECOVERED MONUMENTS

PT. NO.	LDP NORTHING	LDP EASTING	STATION	OFFSET	DATE	DESCRIPTION & REFERENCE DOCUMENTS
18	820,603.284	2,284,210.269	318+37.28	23.82 RT.	5/05/08	SET 12" COMMON SPIKE
19	820,790.047	2,285,103.539	327+48.67	22.80 LT.	5/05/08	SET 12" COMMON SPIKE
20	821,004.038	2,286,348.037	340+12.92	23.80 LT.	5/05/08	SET 12" COMMON SPIKE
1055	820,447.214	2,283,318.267	309+31.87	40.30 RT.	8/20/08	FD. IRON ROD WITH MELTED YELLOW CAP
1057	820,394.377	2,282,978.761	305+88.28	40.09 RT.	8/20/08	FD. 1/2" IRON ROD (NOTED ON CS 95-136-B)
1061	820,691.169	2,284,360.563	319+99.34	39.81 LT.	8/20/08	FD. 5/8" IRON PIN (320+00.00, 40.00 LT.) O.D.O.T. FIELD BOOK NO. 1869
1075	820,554.708	2,284,004.414	316+26.39	40.03 RT.	8/20/08	FD. 5/8" IRON ROD WITH 1 1/4" YELLOW CAP
1076	820,521.781	2,283,796.139	314+15.53	40.41 RT.	8/21/08	FD. 5/8" PIPE WITH BRASS SCREW

**OREGON DEPARTMENT OF TRANSPORTATION**  
 HORIZONTAL CONTROL AND RECOVERY MAP  
 U.S. 730: UMATILLA CO. LINE - UMATILLA SEC.  
 COLUMBIA RIVER HIGHWAY  
 UMATILLA COUNTY

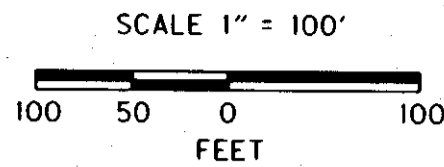
ODOT REGION 5  
 3012 ISLAND AVE.  
 LA GRANDE, OR. 97850-9497

JULY 6, 2012  
 SHEET 10 OF 15

SEC. 13, T. 5 N., R. 27 E., W.M.

RECEIVED BY  
 Umatilla County Surveyor  
 Date: 7/19/2012  
 Rec'd By: S. [Signature]  
 No.: 12-102-13

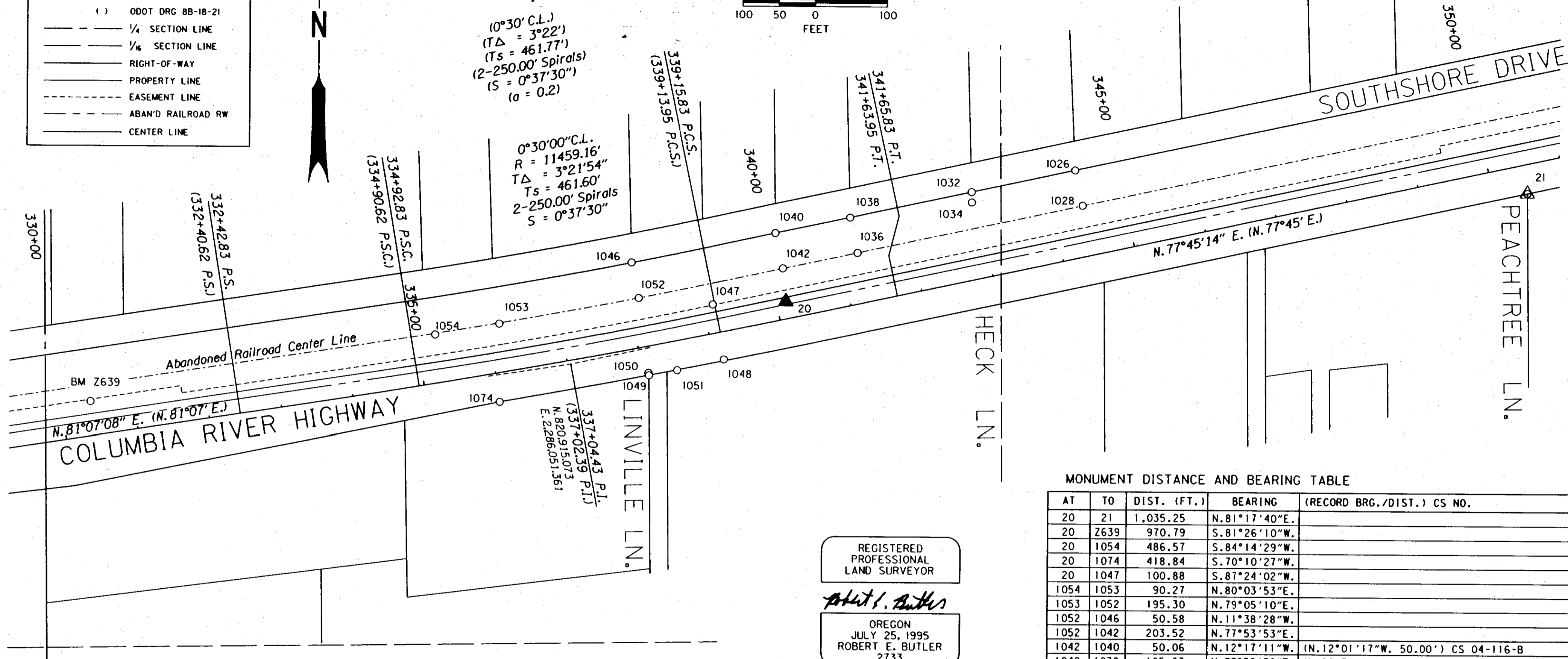
LEGEND	
○	FOUND MONUMENT
▲	SET NETWORK POINT
△	FOUND MONUMENT USED AS NETWORK POINT
( )	ODOT DRG 8B-18-21
---	1/4 SECTION LINE
---	1/8 SECTION LINE
---	RIGHT-OF-WAY
---	PROPERTY LINE
---	EASEMENT LINE
---	ABAND' RAILROAD RW
---	CENTER LINE



(0°30' C.L.)  
 (TΔ = 3°22')  
 (Ts = 461.77')  
 (2-250.00' Spirals)  
 (S = 0°37'30")  
 (a = 0.2)

0°30'00" C.L.  
 R = 11459.16'  
 TΔ = 3°21'54"  
 Ts = 461.60'  
 2-250.00' Spirals  
 S = 0°37'30"

337+04.43 P.I.  
 (337+02.39 P.I.)  
 N. 82°09'15.073"  
 E. 2286.051.361



MONUMENT DISTANCE AND BEARING TABLE

AT	TO	DIST. (FT.)	BEARING	(RECORD BRG./DIST.) CS NO.
20	21	1,035.25	N. 81°17'40"E.	
20	Z639	970.79	S. 81°26'10"W.	
20	1054	486.57	S. 84°14'29"W.	
20	1074	418.84	S. 70°10'27"W.	
20	1047	100.88	S. 87°24'02"W.	
1054	1053	90.27	N. 80°03'53"E.	
1053	1052	195.30	N. 79°05'10"E.	
1052	1046	50.58	N. 11°38'28"W.	
1052	1042	203.52	N. 77°53'53"E.	
1042	1040	50.06	N. 12°17'11"W.	(N. 12°01'17"W. 50.00') CS 04-116-B
1040	1038	105.63	N. 77°52'36"E.	(L=99.71') CS 04-116-B
1042	1036	105.47	N. 77°50'40"E.	(L=99.85') CS 04-116-B
1036	1038	50.00	N. 12°06'20"W.	(N. 12°11'01"W. 50.00') CS 04-116-B
1038	1032	171.66	N. 77°41'51"E.	(L=39.61', N. 77°45'12"E. 132.04') CS 04-116-B
1032	1034	14.44	S. 01°21'48"E.	(S. 01°36'00"E. 15.39') CS 99-128-B
1032	1026	146.15	N. 77°42'42"E.	(N. 77°45'12"E. 146.45') CS 04-116-B (N. 77°45'00"E. 146.37') CS 99-128-B
1026	1028	50.20	S. 12°17'31"E.	(N. 12°14'48"W. 50.00') CS 04-116-B
1074	1049	208.79	N. 79°29'18"E.	(S. 80°15'01"W. 208.87') PP 1999-03
1049	1050	3.65	N. 10°34'07"W.	(N. 10°33'W. 3.64') PP 1999-03
1049	1051	39.78	N. 79°10'03"E.	(N. 79°52'03"E. 39.61') PP 1999-03
1051	1048	66.38	N. 76°30'43"E.	

REGISTERED PROFESSIONAL LAND SURVEYOR  
*Robert E. Butler*  
 OREGON  
 JULY 25, 1995  
 ROBERT E. BUTLER  
 2733  
 EXPIRES: 12/31/13

NETWORK CONTROL & RECOVERED MONUMENTS

PT. NO.	LDP NORTHING	LDP EASTING	STATION	OFFSET	DATE	DESCRIPTION & REFERENCE DOCUMENTS
20	821,004.038	2,286,348.037	340+12.92	23.80 LT.	5/05/08	SET 12" COMMON SPIKE
21	821,160.728	2,287,371.364	350+46.30	39.92 RT.	5/06/08	FD. 5/8" IRON ROD
1026	821,189.217	2,286,746.750	344+41.94	120.41 LT.	8/12/08	FD. 5/8" IRON ROD WITH A YELLOW PLASTIC CAP MARKED "LS 48509"
1028	821,140.172	2,286,757.437	344+41.98	70.21 LT.	8/12/08	FD. 5/8" IRON ROD WITH A YELLOW PLASTIC CAP MARKED "LS 48509"
1032	821,158.112	2,286,603.950	342+95.79	120.30 LT.	8/12/08	FD. 5/8" IRON ROD WITH A YELLOW PLASTIC CAP MARKED "LS 48509"
1034	821,143.673	2,286,604.293	342+93.06	106.12 LT.	8/12/08	FD. BENT 2" DIA. PIPE
1036	821,072.647	2,286,446.714	341+23.98	70.13 RT.	8/12/08	FD. 5/8" IRON ROD WITH A YELLOW PLASTIC CAP MARKED "LS 48509"
1038	821,121.534	2,286,436.229	341+24.09	120.13 LT.	8/12/08	FD. 5/8" IRON ROD WITH A YELLOW PLASTIC CAP MARKED "LS 48509"
1040	821,099.350	2,286,332.953	340+18.04	120.17 LT.	8/12/08	FD. 5/8" IRON ROD WITH A YELLOW PLASTIC CAP MARKED "LS 48509" (C.S. 04-116-B)
1042	821,050.437	2,286,343.606	340+18.27	70.11 LT.	8/12/08	FD. 5/8" IRON ROD WITH A YELLOW PLASTIC CAP MARKED "48509" (C.S. 04-116-B)
1046	821,057.303	2,286,134.399	338+13.16	118.92 LT.	8/13/08	FD. 5/8" IRON ROD WITH 1 1/4" DIA. YELLOW CAP MARKED "EDWARDS 951"
1047	820,999.463	2,286,247.259	339+13.12	39.98 LT.	8/13/08	FD. IRON ROD (339+13.95, 40.00 LT.) O.D.O.T. FIELD BOOK NO. 1869
1048	820,923.032	2,286,262.929	339+13.09	38.04 RT.	8/13/08	FD. IRON ROD (339+13.95, 38.00 RT.) O.D.O.T. FIELD BOOK NO. 1869
1049	820,900.073	2,286,159.308	338+07.34	40.17 RT.	8/13/08	FD. 5/8" IRON ROD WITH YELLOW CAP MARKED "EDWARDS 951" (C.S. 99-05-B)
1050	820,903.666	2,286,158.638	338+07.37	36.51 RT.	8/13/08	FD. 5/8" IRON ROD (C.S. 99-05-B)
1051	820,907.549	2,286,198.378	338+46.97	40.41 RT.	8/13/08	FD. 6" STEEL PIPE (C.S. 99-05-B)
1052	821,007.768	2,286,144.604	338+13.64	68.34 LT.	8/13/08	FD. 5/8" IRON ROD WITH 1 1/4" DIA. YELLOW CAP MARKED "48509"
1053	820,970.792	2,285,952.841	336+17.18	67.34 LT.	8/13/08	FD. 5/8" IRON ROD WITH A YELLOW PLASTIC CAP MARKED "LS 48509"
1054	820,955.217	2,285,863.922	335+26.38	67.28 LT.	8/13/08	FD. 5/8" IRON ROD WITH A YELLOW PLASTIC CAP MARKED "LS 48509"
1074	820,861.983	2,285,954.025	335+99.28	40.00 RT.	8/21/08	FD. 5/8" IRON ROD
Z639	820,859.519	2,285,388.067	330+40.52	47.51 LT.	8/21/08	FD. 3 1/2" DIA. BR. DISK, GOOD CONDITION MKD. "U.S. COAST GEODETIC SURVEY, Z639"

**OREGON DEPARTMENT OF TRANSPORTATION**  
 HORIZONTAL CONTROL AND RECOVERY MAP  
 U.S. 730: UMATILLA CO. LINE - UMATILLA SEC.  
 COLUMBIA RIVER HIGHWAY  
 UMATILLA COUNTY  
 ODOT REGION 5  
 3012 ISLAND AVE.  
 LA GRANDE, OR. 97850-9497  
 JULY 6, 2012  
 SHEET 11 OF 15

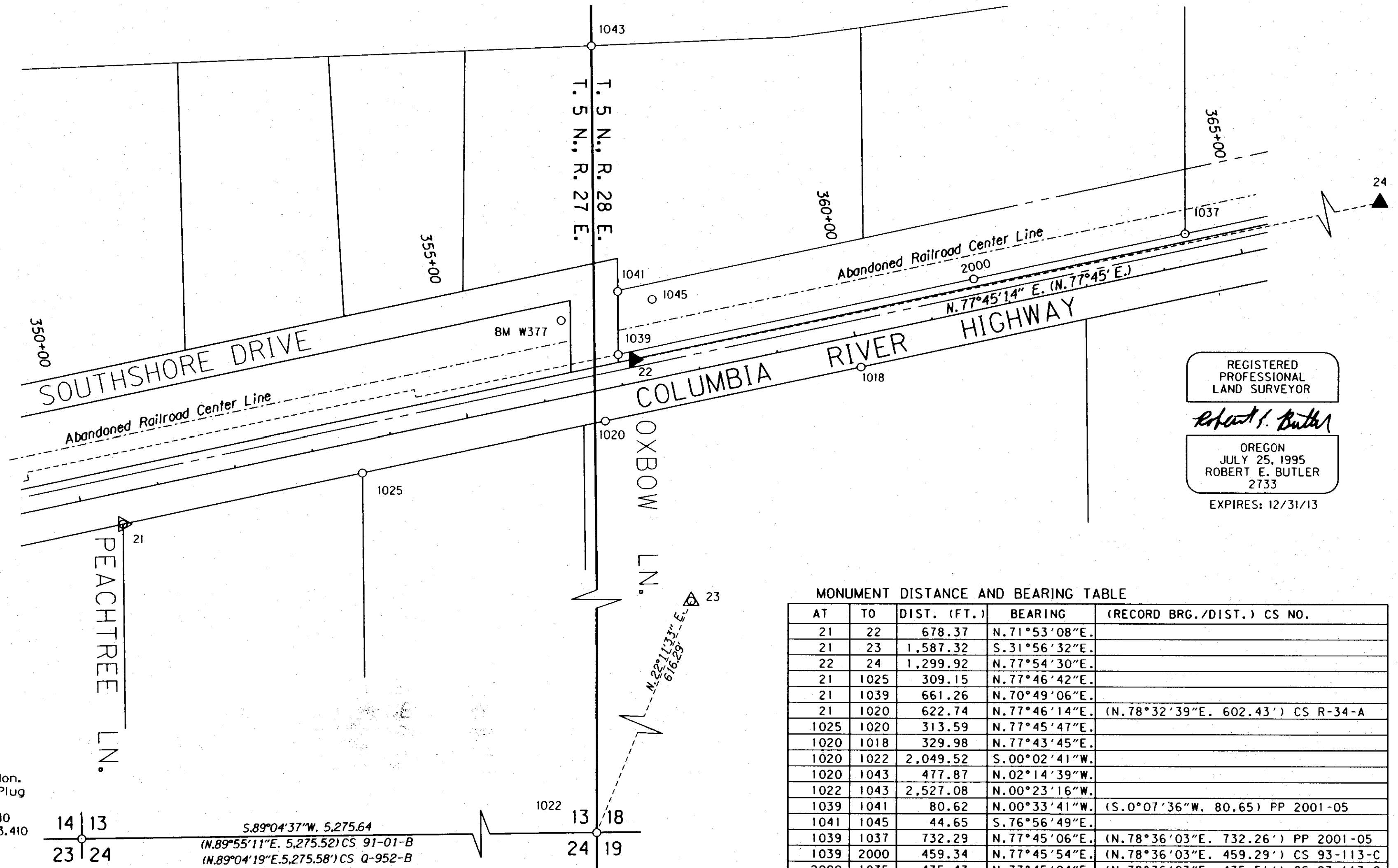
SEC. 13, T. 5 N., R. 27 E., W.M.  
 SEC. 18, T. 5 N., R. 28 E., W.M.

RECEIVED BY  
 Umatilla County Surveyor  
 Date: 7/19/2012  
 Recd By: A. Red  
 No.: 12-102-B



SCALE 1" = 100'  
 100 50 0 100  
 FEET

LEGEND	
○	FOUND MONUMENT
▲	SET NETWORK POINT
△	FOUND MONUMENT USED AS NETWORK POINT
( )	ODOT DRG. 8B-18-21
—	TOWNSHIP LINE
—	SECTION LINE
—	RIGHT-OF-WAY
—	PROPERTY LINE
---	EASEMENT LINE
---	ABAND RAILROAD RW
---	CENTER LINE



REGISTERED  
 PROFESSIONAL  
 LAND SURVEYOR

*Robert E. Butler*

OREGON  
 JULY 25, 1995  
 ROBERT E. BUTLER  
 2733

EXPIRES: 12/31/13

MONUMENT DISTANCE AND BEARING TABLE				
AT	TO	DIST. (FT.)	BEARING	(RECORD BRG./DIST.) CS NO.
21	22	678.37	N. 71° 53' 08" E.	
21	23	1,587.32	S. 31° 56' 32" E.	
22	24	1,299.92	N. 77° 54' 30" E.	
21	1025	309.15	N. 77° 46' 42" E.	
21	1039	661.26	N. 70° 49' 06" E.	
21	1020	622.74	N. 77° 46' 14" E.	(N. 78° 32' 39" E. 602.43') CS R-34-A
1025	1020	313.59	N. 77° 45' 47" E.	
1020	1018	329.98	N. 77° 43' 45" E.	
1020	1022	2,049.52	S. 00° 02' 41" W.	
1020	1043	477.87	N. 02° 14' 39" W.	
1022	1043	2,527.08	N. 00° 23' 16" W.	
1039	1041	80.62	N. 00° 33' 41" W.	(S. 0° 07' 36" W. 80.65) PP 2001-05
1041	1045	44.65	S. 76° 56' 49" E.	
1039	1037	732.29	N. 77° 45' 06" E.	(N. 78° 36' 03" E. 732.26') PP 2001-05
1039	2000	459.34	N. 77° 45' 54" E.	(N. 78° 36' 03" E. 459.29') CS 93-113-C
2000	1035	435.43	N. 77° 45' 04" E.	(N. 78° 36' 03" E. 435.51') CS 93-113-C

17  
 Fd. Conc. Mon.  
 w/ Brass Plug  
 (5/05/08)  
 N. 819,158.140  
 E. 2,282,703.410  
 (CS 1-16-C)

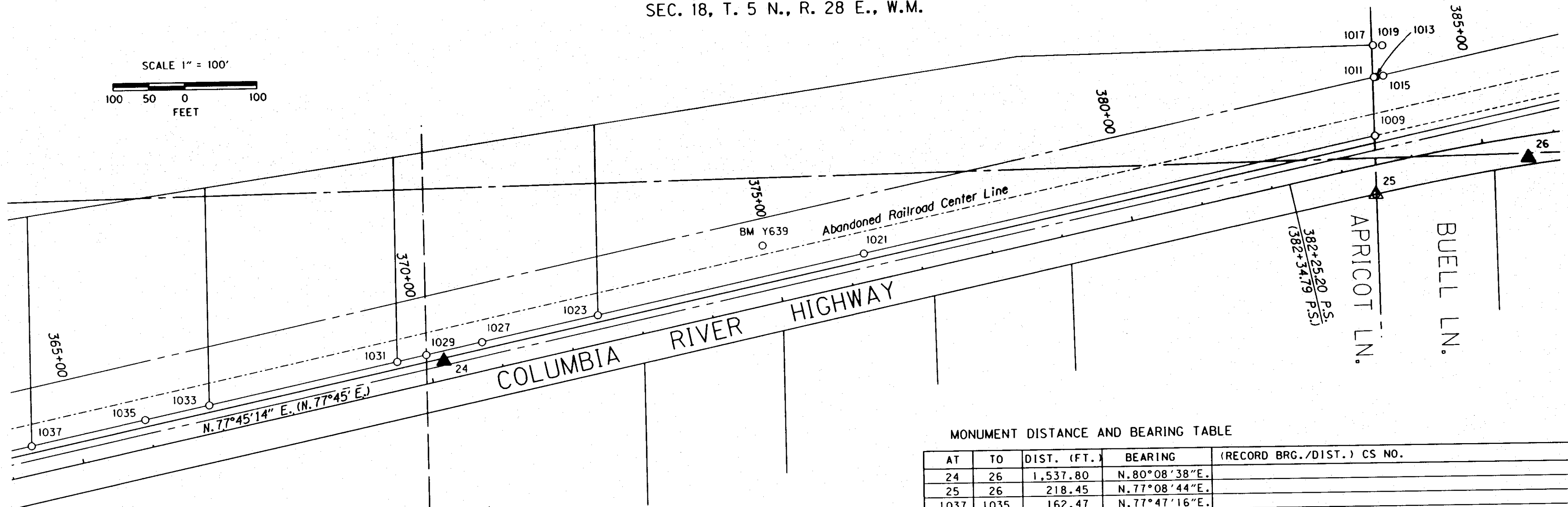
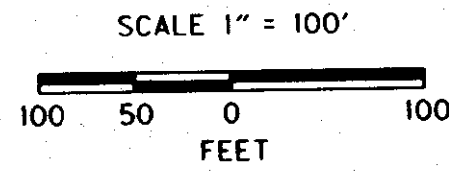
NETWORK CONTROL & RECOVERED MONUMENTS

PT. NO.	LDP NORTHING	LDP EASTING	STATION	OFFSET	DATE	DESCRIPTION & REFERENCE DOCUMENTS
21	821,160.728	2,287,371.364	350+46.30	39.92 RT.	5/06/08	FD. 5/8" IRON ROD
22	821,371.643	2,288,016.114	357+21.11	29.44 LT.	5/06/08	SET 12" COMMON SPIKE
23	819,813.759	2,288,211.156	355+81.28	1,534.37 RT.	5/06/08	FD. 1/2" DIA. PIPE IN CONCRETE
24	821,643.943	2,289,287.190	370+21.03	25.93 LT.	5/06/08	SET 12" COMMON SPIKE
1018	821,362.772	2,288,302.419	399+99.02	39.96 RT.	12/03/08	FD. 5/8" IRON PIN (O.D.O.T. FIELD BOOK NO. 1869)
1020	821,292.641	2,287,979.975	356+69.04	40.10 RT.	8/13/08	FD. 1 1/4" DIA. IRON PIPE
1022	819,243.121	2,287,978.370	352+32.75	2,042.65 RT.	8/12/08	FD. 3 1/2" DIA. BR. DISK MKD. "T5N, R27E, R28E, S13, S18, & S24, BLM 1975, 1972" (C.S. H-106-B)
1025	821,226.173	2,287,673.506	353+55.45	40.05 RT.	8/13/08	FD. 5/8" IRON ROD WITH 1 1/4" DIA. YELLOW CAP MARKED "EDWARDS 951"
1037	821,533.351	2,288,711.539	364+35.02	39.96 LT.	8/12/08	FD. 5/8" IRON ROD WITH YELLOW CAP MARKED "EDWARDS 951" (C.S. 01-20-B)
1039	821,377.997	2,287,995.916	357+02.74	39.93 LT.	8/12/08	FD. 5/8" IRON ROD WITH YELLOW CAP MARKED "EDWARDS 951" (C.S. 93-113-C)
1041	821,458.617	2,287,995.126	357+19.05	118.88 LT.	8/12/08	FD. 5/8" IRON ROD WITH YELLOW CAP MARKED "EDWARDS 951" (C.S. 93-113-C)
1043	821,770.144	2,287,961.262	357+52.04	430.51 LT.	12/08/08	FD. 2 1/2" DIA. BR. DISK STAMPED "EDWARDS, POINT ON TOWNSHIP"
1045	821,448.532	2,288,038.623	357+59.42	99.80 LT.	12/08/08	FD. 2" DIA. PIPE WITH CAP MARKED "2043"
W377	821,421.278	2,287,923.857	356+41.49	97.51 LT.	12/08/08	FD. 3 1/2" DIA. BR. DISK IN GOOD CONDITION MARKED "U.S. COAST GEODETIC SURVEY, W377, 1943"
2000	821,475.340	2,288,444.820	361+62.06	39.84 LT.	3/05/12	FD. 5/8" IRON ROD W/YELLOW PLASTIC CAP

**OREGON DEPARTMENT OF TRANSPORTATION**  
 HORIZONTAL CONTROL AND RECOVERY MAP  
 U.S. 730: UMATILLA CO. LINE - UMATILLA SEC.  
 COLUMBIA RIVER HIGHWAY  
 UMATILLA COUNTY

ODOT REGION 5  
 3012 ISLAND AVE.  
 LA GRANDE, OR. 97850-9497

JULY 6, 2012  
 SHEET 12 OF 15



LEGEND	
○	FOUND MONUMENT
▲	SET NETWORK POINT
△	FOUND MONUMENT USED AS NETWORK POINT
( )	ODOT DRG. 8B-18-21
—	1/4 SECTION LINE
—	1/6 SECTION LINE
—	RIGHT-OF-WAY
—	PROPERTY LINE
---	EASEMENT LINE
---	ABAN'D RAILROAD RW
---	CENTER LINE



REGISTERED PROFESSIONAL LAND SURVEYOR  
*Robert E. Butler*  
 OREGON  
 JULY 25, 1995  
 ROBERT E. BUTLER  
 2733  
 EXPIRES: 12/31/13

RECEIVED BY  
 Umatilla County Surveyor  
 Date: 7/19/2012  
 Rec'd By: S. Ows  
 No.: 12-102-B

MONUMENT DISTANCE AND BEARING TABLE

AT	TO	DIST. (FT.)	BEARING	(RECORD BRG./DIST.) CS NO.
24	26	1,537.80	N.80°08'38"E.	
25	26	218.45	N.77°08'44"E.	
1037	1035	162.47	N.77°47'16"E.	
1037	1033	253.57	N.77°47'41"E.	(N.78°36'03"E. 253.58') PP 2008-11
1037	1023	809.41	N.77°45'58"E.	(N.78°36'03"E. 809.57') PP 2001-05
1035	1033	91.09	N.77°46'46"E.	
1035	1027	481.32	N.77°46'42"E.	(N.78°36'03"E. 481.56') CS 93-113-C
1027	1021	546.52	N.77°44'12"E.	(N.78°36'03"E. 546.41') CS 93-113-C
1033	1031	268.78	N.77°45'37"E.	(N.78°36'03"E. 268.81') PP 2008-11
1031	1029	41.65	N.77°31'34"E.	
1031	1023	287.06	N.77°45'18"E.	(N.78°36'03"E. 287.18') PP 2008-11
1029	24	26.10	S.69°44'23"E.	
1029	1027	79.80	N.77°58'10"E.	
1027	1023	165.61	N.77°42'33"E.	
1023	1009	1,111.84	S.77°44'53"W.	(N.78°36'03"E. 1,111.82') PP 2001-05; PP 2008-11
1023	1021	380.91	N.77°44'56"E.	
1021	Y639	141.64	N.84°40'10"W.	
25	1009	82.24	N.00°10'04"W.	(S.0°38'07"W. 82.80') CS 93-113-C; PP 2001-05; PP 2008-11
1021	1009	730.93	N.77°44'51"E.	(N.78°36'03"E. 730.94') CS 93-113-C
1009	1011	81.80	N.00°32'01"W.	(S.0°38'07"W. 81.80') CS 93-113-C; PP 2001-05
1011	1013	2.97	N.85°54'06"E.	(EASTERLY 2.56') CS 93-113-C
1011	1015	13.07	N.81°27'49"E.	(EASTERLY 13.08') CS 93-113-C
1011	1017	44.63	N.80°21'01"W.	(N.0°00'23"E. 44.70') CS 93-113-C; PP 2001-05
1017	1019	12.95	S.88°32'32"E.	(12.95' EAST) CS 93-113-C

NETWORK CONTROL & RECOVERED MONUMENTS

PT. NO.	LDP NORTHING	LDP EASTING	STATION	OFFSET	DATE	DESCRIPTION & REFERENCE DOCUMENTS
24	821,643.943	2,289,287.190	370+21.03	25.93 LT.	5/06/08	SET 12" COMMON SPIKE
25	821,858.575	2,290,589.320	383+39.40	40.19 RT.	5/06/08	FD. 2 1/2" DIA. BR. CAP SET WITNESS CORNER MKD. "UMATILLA COUNTY SURVEYOR", 50.9 FT. SOUTH OF CENTER OF SEC. 18, (KRUMBEIN 1974)
26	821,907.174	2,290,802.293	385+59.87	30.10 RT.	5/06/08	SET HUB AND TACK
1009	821,940.814	2,290,589.079	383+55.81	40.39 LT.	8/13/08	FD. 5/8" IRON ROD WITH YELLOW CAP MARKED "EDWARDS 951" (C.S. 93-113-C)
1011	822,022.651	2,290,588.770	383+71.63	120.64 LT.	8/12/08	FD. 3 1/2" DIA. ALUM. CAP MARKED "CORP. OF ENGINEERS - US ARMY SURVEY MARKER, 18-6" (C.S. 0-960-B)
1013	822,022.821	2,290,591.279	383+74.06	120.31 LT.	8/12/08	FD. 5/8" IRON ROD (NOTED ON C.S. 93-113-C)
1015	822,024.591	2,290,601.692	383+84.37	120.00 LT.	8/12/08	FD. 2" DIA. IRON PIPE WITH SCREW AND WASHER (NOTED ON C.S. 93-113-C)
1017	822,067.236	2,290,588.044	383+79.50	164.49 LT.	8/12/08	FD. 3 1/2" DIA. ALUM. CAP MARKED "CORP. OF ENGINEERS - US ARMY SURVEY MARKER, 18-5" (C.S. 0-960-B)
1019	822,066.906	2,290,600.995	383+91.72	161.63 LT.	8/12/08	FD. 2" DIA. IRON PIPE WITH SCREW AND WASHER (NOTED ON C.S. 93-113-C)
1021	821,785.696	2,289,874.798	376+25.33	39.82 LT.	8/12/08	FD. 5/8" IRON ROD WITH YELLOW CAP MARKED "EDWARDS 951"
1023	821,704.868	2,289,502.563	372+44.42	39.79 LT.	8/12/08	FD. 5/8" IRON ROD WITH YELLOW CAP MARKED "EDWARDS 951" (C.S. 01-20-B)
1027	821,669.614	2,289,340.751	370+78.81	39.66 LT.	8/12/08	FD. 5/8" IRON ROD WITH YELLOW CAP MARKED "EDWARDS 951" (C.S. 93-113-C)
1029	821,652.981	2,289,262.705	369+99.01	39.96 LT.	8/13/08	FD. 5/8" IRON ROD
1031	821,643.985	2,289,222.037	369+57.36	39.79 LT.	8/12/08	FD. 5/8" IRON ROD WITH YELLOW CAP MARKED "EDWARDS 951" (C.S. 08-89-B)
1033	821,587.002	2,288,959.364	366+88.58	39.82 LT.	8/12/08	FD. 5/8" IRON ROD WITH YELLOW CAP MARKED "EDWARDS 951" (C.S. 08-89-B)
1035	821,567.720	2,288,870.336	365+97.49	39.86 LT.	8/12/08	FD. 5/8" IRON ROD WITH YELLOW CAP MARKED "EDWARDS 951" (C.S. 93-113-C)
1037	821,533.351	2,288,711.539	364+35.02	39.96 LT.	8/12/08	FD. 5/8" IRON ROD WITH YELLOW CAP MARKED "EDWARDS 951" (C.S. 01-20-B)
Y639	821,798.854	2,289,733.776	374+90.31	82.59 LT.	8/12/08	FD. 3 1/2" DIA. BR. DISK IN GOOD CONDITION MKD. "U.S. COAST GEODETIC SURVEY, Y639, 1968" (THE ELEVATION OF 302.824 FEET WAS USED FOR CONSTRUCTION)

**T** OREGON DEPARTMENT OF TRANSPORTATION  
 HORIZONTAL CONTROL AND RECOVERY MAP  
 U.S. 730: UMATILLA CO. LINE - UMATILLA SEC.  
 COLUMBIA RIVER HIGHWAY  
 UMATILLA COUNTY

ODOT REGION 5  
 3012 ISLAND AVE.  
 LA GRANDE, OR. 97850-9497

JULY 6, 2012  
 SHEET 13 OF 15

SEC. 18, T. 5 N., R. 28 E., W.M.

MONUMENT DISTANCE AND BEARING TABLE

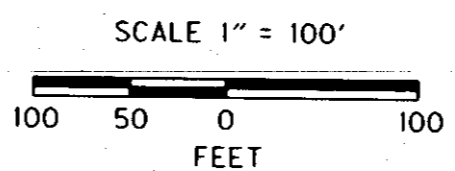
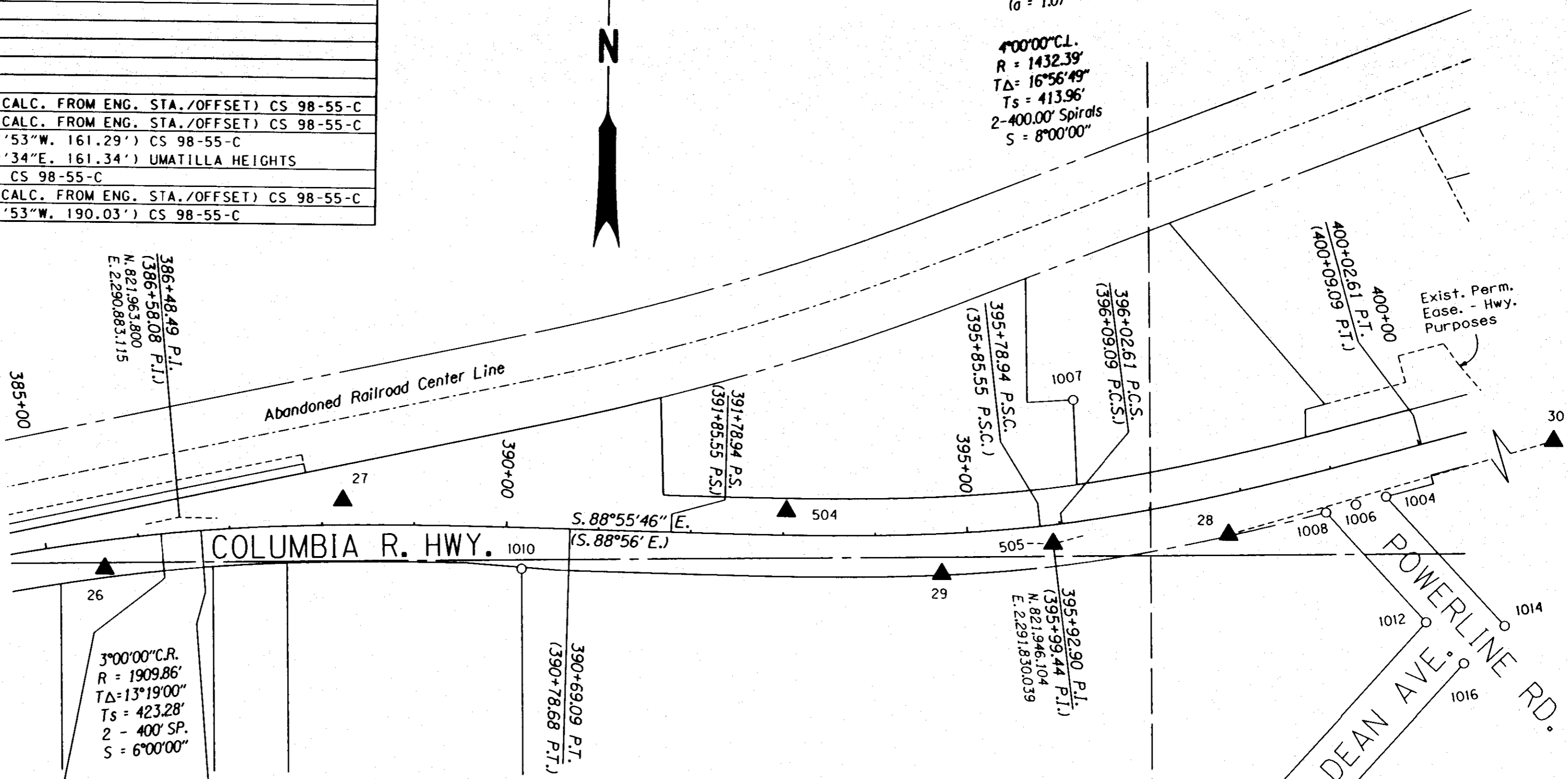
AT	TO	DIST. (FT.)	BEARING	(RECORD BRG./DIST.) CS NO.
26	27	268.22	N.73°23'57"E.	
26	28	1,219.01	N.87°35'39"E.	
28	29	313.72	S.81°30'47"W.	
28	30	680.79	N.73°15'14"E.	
504	29	181.83	S.68°40'10"E.	
29	505	124.83	N.74°08'05"E.	
27	1010	207.61	S.69°50'13"E.	
29	1007	236.99	N.36°10'34"E.	
1010	1008	873.92	N.85°17'56"E.	
1008	1006	33.88	N.74°43'10"E.	(33.91' CALC. FROM ENG. STA./OFFSET) CS 98-55-C
1006	1004	33.86	N.74°23'01"E.	(33.91' CALC. FROM ENG. STA./OFFSET) CS 98-55-C
1008	1012	161.35	S.43°08'36"E.	(N.43°17'53"W. 161.29') CS 98-55-C (S.43°09'34"E. 161.34') UMATILLA HEIGHTS
1012	1016	60.47	S.43°11'15"E.	(60.00') CS 98-55-C
1016	1014	59.98	N.46°39'06"E.	(60.00' CALC. FROM ENG. STA./OFFSET) CS 98-55-C
1014	1004	190.10	N.43°10'00"W.	(N.43°17'53"W. 190.03') CS 98-55-C



(4°00' C.L.)  
 (TΔ = 16°56'30")  
 (Ts = 413.89')  
 (2-400.00' SP.)  
 (S = 8°00')  
 (a = 1.0)

4°00'00" C.L.  
 R = 1432.39'  
 TΔ = 16°56'49"  
 Ts = 413.96'  
 2-400.00' Spirals  
 S = 8°00'00"

LEGEND	
○	FOUND MONUMENT
▲	SET NETWORK POINT
△	FOUND MONUMENT USED AS NETWORK POINT
( )	ODOT DRG. 8B-18-21
—	1/4 SECTION LINE
—	1/6 SECTION LINE
—	RIGHT-OF-WAY
—	PROPERTY LINE
---	EASEMENT LINE
---	ABAND' RAILROAD RW
---	CENTER LINE



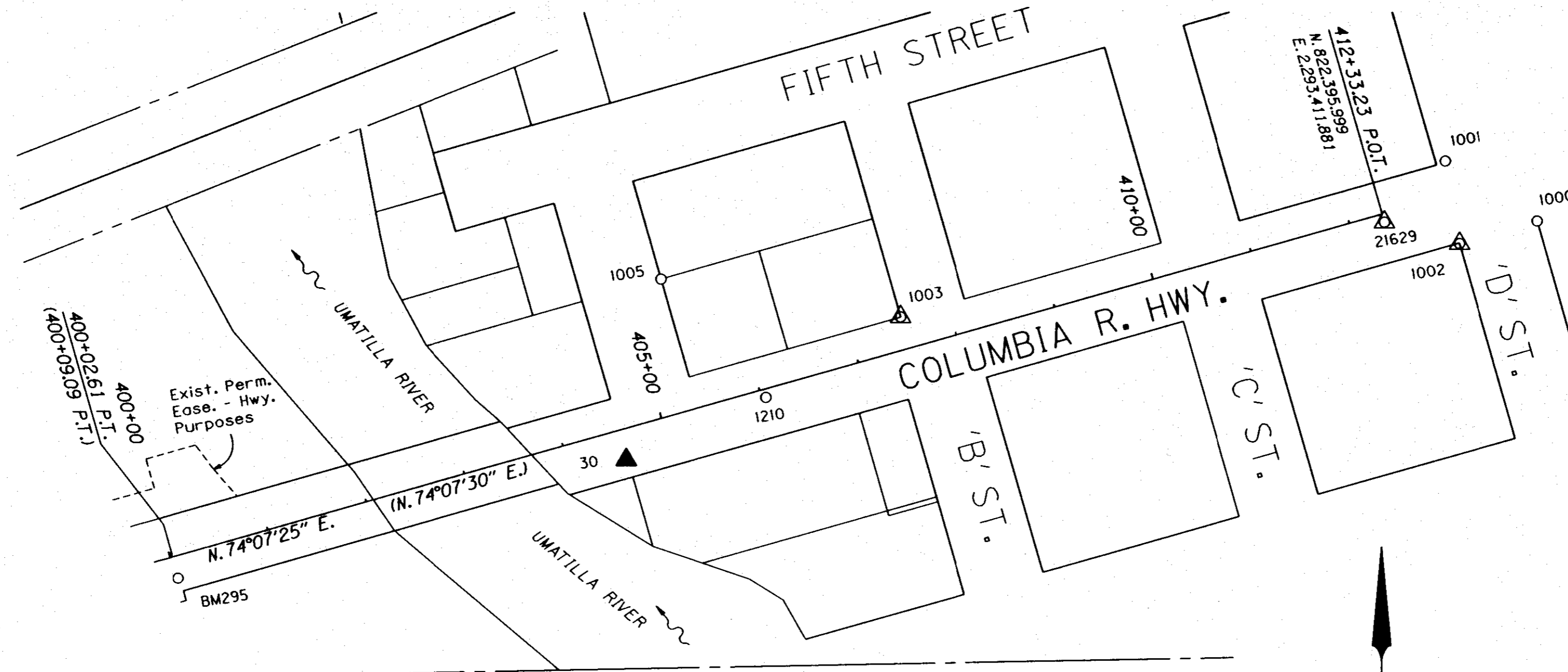
**RECEIVED BY**  
 Umatilla County Surveyor  
 Date: 7/19/2012  
 Rec'd By: J. Olan  
 No.: 12-102-0

REGISTERED PROFESSIONAL LAND SURVEYOR  
*Robert E. Butler*  
 OREGON  
 JULY 25, 1995  
 ROBERT E. BUTLER  
 2733  
 EXPIRES: 12/31/13

NETWORK CONTROL & RECOVERED MONUMENTS

PT. NO.	LDP NORTHING	LDP EASTING	STATION	OFFSET	DATE	DESCRIPTION & REFERENCE DOCUMENTS
26	821,907.174	2,290,802.293	385+59.87	30.10 RT.	5/06/08	SET HUB AND TACK
27	821,983.804	2,291,059.332	388+22.63	26.58 LT.	5/06/08	SET HUB AND TACK
28	821,958.342	2,292,020.226	397+76.83	43.65 RT.	5/06/08	SET 12" COMMON SPIKE
29	821,912.043	2,291,709.944	394+70.39	43.62 RT.	5/06/08	SET HUB AND TACK POINT ON SEMI TANGENT, FROM TRANSIT NOTES 124.80 FT. BACK OF P.I. ON TANGENT FROM BRIDGE, (O.D.O.T. MAP 8B-18-21)
30	822,154.497	2,292,672.148	404+55.65	29.93 RT.	5/06/08	SET HUB AND TACK
504	821,978.182	2,291,540.571	393+03.23	26.11 LT.	8/08/08	SET HUB AND TACK
505	821,946.169	2,291,830.020	395+90.76	20.44 RT.	8/08/08	FD. PK NAIL
1004	822,001.906	2,292,190.489	399+50.72	44.96 RT.	8/08/08	FD. 5/8" IRON ROD WITH YELLOW CAP MARKED "U.M.A. CO. RD. DEPT., LS 2627" (C.S. 98-55-C)
1006	821,992.791	2,292,157.878	399+17.04	44.96 RT.	8/06/08	FD. RAILROAD SPIKE (C.S. 98-55-C)
1007	822,103.342	2,291,849.832	396+34.60	132.26 LT.	8/06/08	FD. 1/2" IRON ROD (CS 84-15-A)
1008	821,983.862	2,292,125.198	398+83.44	44.92 RT.	8/08/08	FD. 5/8" IRON ROD WITH YELLOW CAP MARKED "U.M.A. CO. RD. DEPT., LS 2627" (C.S. 98-55-C)
1010	821,912.240	2,291,254.221	390+17.73	44.59 RT.	8/08/08	FD. 1/2" IRON ROD (PLAT OF UMATILLA HEIGHTS, BOOK 13, PAGE 145)
1012	821,866.136	2,292,235.531	399+57.14	187.87 RT.	8/13/08	FD. BENT 3/4" PIPE (C.S. 98-55-C)
1014	821,863.219	2,292,320.527	400+37.76	213.90 RT.	8/13/08	FD. 5/8" IRON ROD (C.S. 98-55-C)
1016	821,822.050	2,292,276.913	399+84.61	241.57 RT.	8/08/08	FD. 5/8" IRON ROD WITH YELLOW CAP MARKED "U.M.A. CO. RD. DEPT., LS 2627" (C.S. 98-55-C)

OREGON DEPARTMENT OF TRANSPORTATION  
 HORIZONTAL CONTROL AND RECOVERY MAP  
 U.S. 730: UMATILLA CO. LINE - UMATILLA SEC.  
 COLUMBIA RIVER HIGHWAY  
 UMATILLA COUNTY

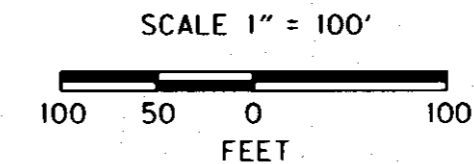


REGISTERED  
PROFESSIONAL  
LAND SURVEYOR  
*Robert E. Butler*  
OREGON  
JULY 25, 1995  
ROBERT E. BUTLER  
2733  
EXPIRES: 12/31/13

MONUMENT DISTANCE AND BEARING TABLE

AT	TO	DIST. (FT.)	BEARING	(RECORD BRG./DIST.) CS NO.
30	1002	842.34	N.75°23'20"E.	
30	1003	303.14	N.62°20'14"E.	
30	21629	777.89	N.72°31'15"E.	
30	BM295	453.41	S.75°11'01"W.	
1005	1003	237.22	S.80°58'04"E.	(S.15°03'00"E. 99.88', N.74°57'00"E. 215.21') CS 03-64-B
21629	1210	629.07	S.74°07'25"W.	(N.74°08'29"E. 629.10') CS 95-22-C
1002	1000	79.68	N.73°44'34"E.	
1002	1001	82.57	N.09°37'21"W.	

LEGEND	
○	FOUND MONUMENT
▲	SET NETWORK POINT
△	FOUND MONUMENT USED AS NETWORK POINT
( )	ODOT DRG. 8B-18-21
---	1/4 SECTION LINE
---	RIGHT-OF-WAY
---	PROPERTY LINE
---	EASEMENT LINE
---	ABAND RAILROAD RW
---	CENTER LINE



RECEIVED BY  
Umatilla County Surveyor  
Date: 7/19/2012  
Rec'd By: S. Ouse  
No.: 12-102-B

NETWORK CONTROL & RECOVERED MONUMENTS

PT. NO.	LDP NORTHING	LDP EASTING	STATION	OFFSET	DATE	DESCRIPTION & REFERENCE DOCUMENTS
30	822,154.497	2,292,672.148	404+55.65	29.93 RT.	5/06/08	SET HUB AND TACK
1000	822,389.288	2,293,563.747	N/A	N/A	8/06/08	FD. 3/4" DIA. PIPE
1001	822,448.394	2,293,473.446	N/A	N/A	8/06/08	FD. 5/8" IRON ROD
1002	822,366.981	2,293,487.249	N/A	N/A	8/05/08	FD. 5/8" IRON ROD WITH A YELLOW PLASTIC CAP MARKED "LS 48509"
1003	822,295.236	2,292,940.641	407+52.40	31.99 LT.	8/05/08	FD. 5/8" IRON ROD (C.S. 03-64-B)
21629	822,388.141	2,293,414.116	412+33.23	8.17 RT.	8/05/08	FD. 3" DIA. BR. CAP SET IN CONC. IN MON. BOX STAMPED "EQ STA. 216+29.10 BK, STA. 217+00.00 AH, P.O.T." (C.S. 95-22-C)
1004	822,001.906	2,292,190.489	399+50.72	44.96 RT.	8/06/08	FD. 5/8" IRON ROD WITH YELLOW CAP MARKED "U.M.A. CO. RD. DEPT., LS 2627" (C.S. 98-55-C)
1005	822,332.476	2,292,706.360	405+37.24	131.90 LT.	8/05/08	FD. 5/8" IRON ROD (C.S. K-24-B)
1210	822,216.051	2,292,809.044	406+04.15	8.17 RT.	8/05/08	FD. 3" DIA. BRASS CAP SET IN CONCRETE IN MONUMENT BOX STAMPED "STA. 210+00 P.O.T." (C.S. 95-22-C)
1012	821,866.136	2,292,235.531	399+57.14	187.87 RT.	8/13/08	FD. BENT 3/4" PIPE (UMATILLA C.S. 98-55-C)
BM295	822,038.548	2,292,233.811	400+02.31	21.54 RT.	8/08/08	FD. 1" DIA. BR. DISK IN GOOD CONDITION AT THE WEST END OF THE UMATILLAR. BR., IN THE WINGWALL ON THE SOUTH SIDE.

OREGON DEPARTMENT OF TRANSPORTATION  
HORIZONTAL CONTROL AND RECOVERY MAP  
U.S. 730: UMATILLA CO. LINE - UMATILLA SEC.  
COLUMBIA RIVER HIGHWAY  
UMATILLA COUNTY

ODOT REGION 5  
3012 ISLAND AVE.  
LA GRANDE, OR. 97850-9497

JULY 6, 2012  
SHEET 15 OF 15