

RECORD OF SURVEY

CORNER NOTES:

- FOUND UPROOTED 2 1/4" REDFIELD MONUMENT, A 2 1/4" BRASS CAP ON 2" BY 36" GALV. IRON PIPE WIRED TO THE NORTH SIDE OF A FENCE CORNER GATE POST. HELD THE BASE OF THE MONUMENT AS THE CORNER POINT TO CONFORM WITH THE TIED POSITION FROM GARY ROBERTS SURVEY FOR UMATILLA COUNTY RECORDED AS SURVEY NO. 04-49-C. CORNER POINT CANNOT BE REMONUMENTED WITHOUT DISASSEMBLING THE ROCK JACK AND FENCES. SET A 5/8" BY 20" REBAR WITH 2" ALUMINUM CAP MARKED AS SHOWN ON THIS MAP. S 00°52'18" W. 2.00' FROM THE CORNER POINT AS A WITNESS MONUMENT.
- NEW ACCESSORIES, REFERENCING CORNER MONUMENT:
 A 3/4" BRASS WASHER STAMPED "PLS 1106", NAILED TO CUT OFF POWER POLE BEARS S 82' E. 19.0'.
 A 3/4" BRASS WASHER STAMPED "PLS 1106", NAILED TO CUT OFF POWER POLE BEARS N 57' W. 20.7'.
 A 3/4" BRASS WASHER STAMPED "PLS 1106", NAILED TO FENCE CORNER POST BEARS N 24' W. 21'.
 A 5/8" BY 24" REBAR WITH RED PLASTIC CAP MARKED "ORPLS 1106 WA PLS 17372" BEARS S 21' E. 32.6".
 NAILED "BEARING OBJECT" SIGNS NEAR BRASS WASHERS AND WIRED "BEARING OBJECT" SIGN TO REBAR.
- FOUND REDFIELD MONUMENT, A 2 1/4" BRASS CAP ON 2" GALV. IRON PIPE IN A LARGE MOUND OF STONE. CAP IS MARKED AS SHOWN ON THIS MAP, INCLUDING THE EXTRANEIOUS "1/4".
- FOUND UPROOTED REDFIELD MONUMENT, A 2 1/4" BRASS CAP ON 2" BY 36" GALV. IRON PIPE WIRED TO THE NORTHEAST CORNER OF AN OLD ROCK CRIB. THE CORNER POINT WAS REESTABLISHED MIDWAY, ON LINE, BETWEEN THE W 1/4 AND SW CORNERS OF SECTION 5. THE CORNER POINT IS MONUMENTED BY A 5/8" BY 24" REBAR WITH 2" ALUMINUM CAP MARKED AS SHOWN ON THIS MAP. JAMES P. CURRIN UNDER CONTRACT NO. 537, DATED MARCH 5, 1889, ORIGINALLY ESTABLISHED THIS CORNER AND SET A BASALT STONE, 12 X 8 X 8 INS., 8 INS. IN THE GROUND, MARKED 1/16 ON WEST FACE AND SURROUNDED WITH A STONE MOUND. C.E. REDFIELD SURVEYED THROUGH THE CORNER POINT AND SET THE BRASS CAP MONUMENT AT MIDPOINT BETWEEN THE 1/4 AND SECTION CORNER, WITHOUT RECOVERING CURRIN'S ORIGINAL STONE. ALL STONES IN THE AREA HAVE BEEN DISPLACED BY FENCE BUILDING. THE REESTABLISHED CORNER IS IN A SMALL ROCK MOUND JUST SOUTH OF A ROCK CRIB IN A OLD EAST-WEST FENCE LINE. NEW ACCESSORIES, REFERENCING CORNER MONUMENT:
 A 5/8" BY 24" REBAR WITH RED PLASTIC CAP MARKED "ORPLS 1106 WA PLS 17372" BEARS EAST, 32.1'.
 A 5/8" BY 24" REBAR WITH RED PLASTIC CAP MARKED "ORPLS 1106 WA PLS 17372" BEARS WEST, 23.5'.
 WIRED "BEARING OBJECT" SIGNS TO REBAR ACCESSORIES.
- FOUND REDFIELD MONUMENT, A 2 1/4" BRASS CAP ON 2" GALV. IRON PIPE PROTRUDING 14" FROM THE GROUND. MONUMENT PIPE IS SOLIDLY SET BUT LEANING WEST. TIED CENTER OF PIPE MONUMENT WHERE IT ENTERS THE GROUND.
- HELD A FENCE CORNER WITH OLD FENCES EXTENDING WEST AND NORTH-SOUTH AS BEST EVIDENCE OF ORIGINAL CORNER LOCATION. THE CORNER FALLS ON ROCKY GROUND AND STONES ARE SCATTERED AROUND THE CORNER AREA. THE CORNER POINT IS MONUMENTED WITH A 5/8" BY 20" REBAR WITH 2" ALUMINUM CAP MARKED AS SHOWN ON THIS MAP. THE CORNER AREA HAS BEEN SEARCHED PREVIOUSLY BY OTHERS. THE CORNER WAS ORIGINALLY ESTABLISHED BY JAMES P. CURRIN UNDER CONTRACT NO. 537, DATED MARCH 5, 1889. CURRIN SET A BASALT STONE, 14 X 8 X 6 INS., 10 INS. IN THE GROUND, MARKED 1/16 ON NORTH FACE AND RAISED A MOUND OF STONE ALONGSIDE. I FIND NO NOTES BY C.E. REDFIELD FOR THIS CORNER. NEW ACCESSORIES, REFERENCING CORNER MONUMENT:
 A 5/8" BY 12" REBAR WITH RED PLASTIC CAP MARKED "ORPLS 1106 WA PLS 17372" BEARS N 08' E. 30.4'.
 A 5/8" BY 12" REBAR WITH RED PLASTIC CAP MARKED "ORPLS 1106 WA PLS 17372" BEARS SOUTH, 18.9'.
 WIRED "BEARING OBJECT" SIGNS TO REBAR ACCESSORIES.
- FOUND REDFIELD MONUMENT, A 2 1/4" BRASS CAP ON 2" GALV. IRON PIPE PROTRUDING 16" FROM THE GROUND. MONUMENT PIPE IS SOLIDLY SET BUT LEANING NORTH. TIED CENTER OF PIPE MONUMENT WHERE IT ENTERS THE GROUND.
- THIS CORNER WAS REESTABLISHED ON LINE BETWEEN THE SOUTHWEST AND SOUTH 1/4 CORNERS OF SECTION 5, HOLDING AN OLD NORTH-SOUTH FENCE LINE FOR DEPARTURE. THE CORNER POINT IS MONUMENTED BY A 5/8" BY 24" REBAR WITH 2" ALUMINUM CAP MARKED AS SHOWN ON THIS MAP. JAMES P. CURRIN UNDER CONTRACT NO. 537, DATED MARCH 5, 1889, ORIGINALLY ESTABLISHED THIS CORNER AND SET A BASALT STONE, 14 X 12 X 10 INS., 10 INS. IN THE GROUND, MARKED 1/16 ON NORTH FACE, WITH PITS 18 X 18 X 12 INS. 5 1/2 FEET DISTANT EAST AND WEST OF CORNER AND RAISED A MOUND OF EARTH OVER IT. C.E. REDFIELD RETRACED THIS LINE WITHOUT RECOVERING THE CORNER STONE. REDFIELD CALLS FOR A NORTH-SOUTH FENCE 20.27 CHAINS FROM THE SOUTH 1/4 CORNER OF SECTION 5. I NOTE THE AREA HAS BEEN FARMED IN THE PAST. NEW ACCESSORIES, REFERENCING CORNER MONUMENT:
 A 5/8" BY 24" REBAR WITH RED PLASTIC CAP MARKED "ORPLS 1106 WA PLS 17372" BEARS NORTH, 19.7'.
 A 5/8" BY 24" REBAR WITH RED PLASTIC CAP MARKED "ORPLS 1106 WA PLS 17372" BEARS SOUTH, 24.5'.
 WIRED "BEARING OBJECT" SIGNS TO REBAR ACCESSORIES.
- FOUND 3" BRASS CAP ON 2 1/2" STAINLESS STEEL PIPE PROTRUDING 4" FROM STONE MOUND PER SURVEY UNDER BLM SPECIAL INSTRUCTIONS DATED APRIL 4, 2002.

NARRATIVE

THIS SURVEY WAS MADE AT THE REQUEST OF JERRY LAUER, SUPERINTENDENT OF THE BIA UMATILLA AGENCY. THE PURPOSE OF THE SURVEY WAS TO LOCATE OR REESTABLISH THE SW1/16TH AND WEST 1/16TH CORNER COMMON TO SECTIONS 5 AND 8.

THE CORNERS WERE REESTABLISHED AS EXPLAINED ON THIS RECORD OF SURVEY MAP. THE TOWNSHIP WAS SUBDIVIDED BY CURRIN AND NOLAND UNDER SPECIAL CONTRACT DATED MAY 4, 1887. ALLOTMENT CORNERS IN SECTION 5 WERE ORIGINALLY ESTABLISHED BY JAMES P. CURRIN UNDER CONTRACT NO. 537 DATED MARCH 5, 1889. THE "THREE MILE RULE" AND VARIATIONS OF IT WERE USED IN ESTABLISHING ALLOTMENT CORNERS IN SECTION 5, C.E. REDFIELD, U.S. INDIAN SERVICE SURVEYOR, RESTORED OR REMONUMENTED CERTAIN SECTION 1/4 CORNER, AND ALLOTMENT CORNERS BETWEEN 1917 AND 1919. REDFIELD'S NOTES FOR PORTIONS OF THE EXTERIOR OF SECTION 5 WERE FOUND, BUT NOTES FOR ALLOTMENT CORNERS RESTORED OR REMONUMENTED WITHIN SECTION 5 WERE NOT FOUND.

THE SURVEY WAS MADE BY A 2 PERSON CREW USING TRIMBLE 5700 GEODETIC GPS RECEIVERS OPERATED IN REAL TIME KINEMATIC MODE. CONTROL CORNERS TIED AND MONUMENTS SET WERE VERIFIED BY REDUNDANT OBSERVATIONS.

REGISTERED
PROFESSIONAL
LAND SURVEYOR

William R. Wells

OREGON
JULY 22, 1977
WILLIAM R. WELLS
1106
RENEWS 6/30/12

WELLS SURVEYING
1 SW NYE AVENUE, SUITE B
P.O. BOX 1696
PENDLETON, OR 97801
PHONE: (541) 276-6362

DATE: 09/10 DR. BY: WRW
CK. BY: WRW NO: 10-1302

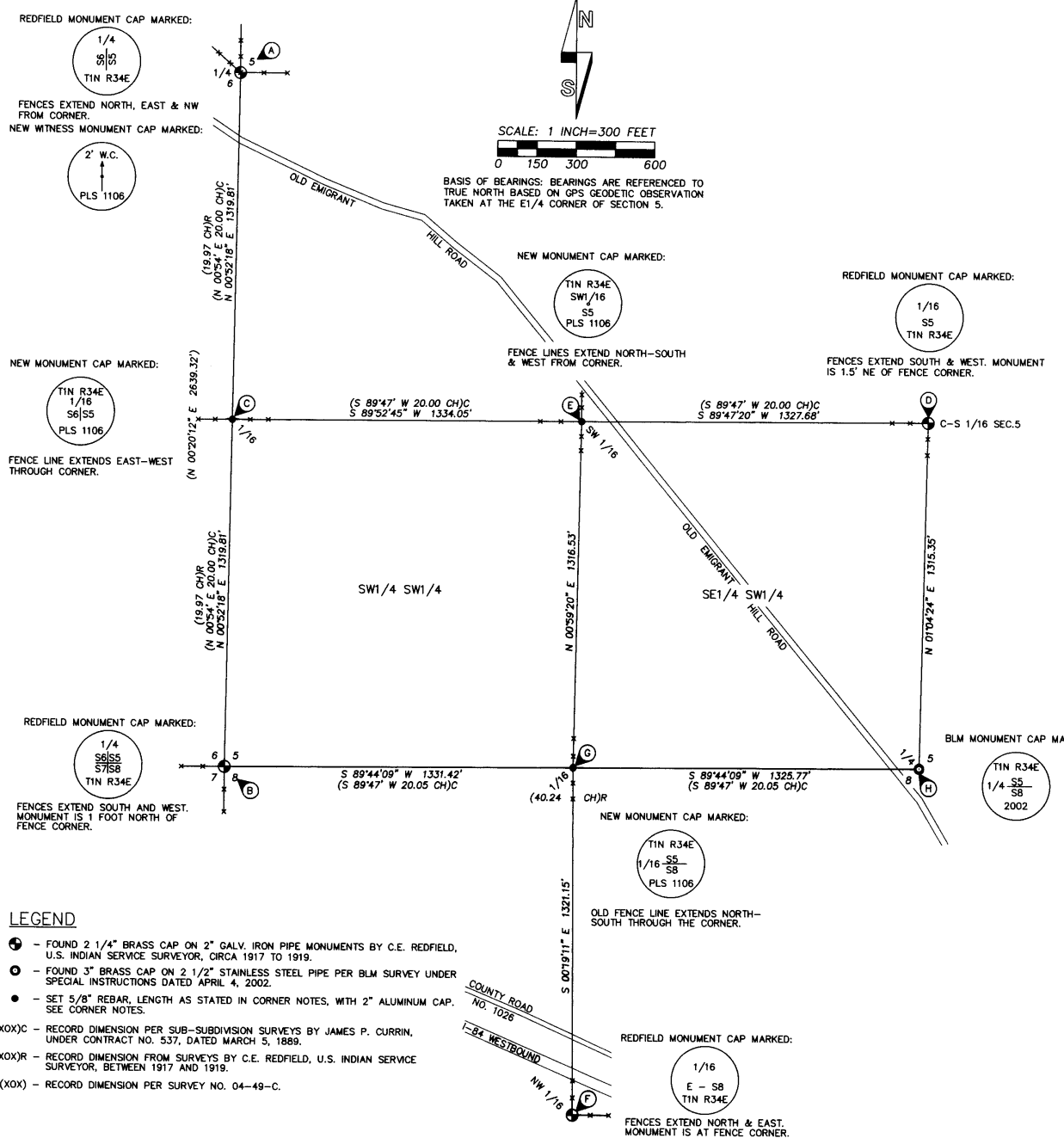
PROJECT: \BIA5EC5R0T

SURVEY FOR:
BUREAU OF INDIAN AFFAIRS
UMATILLA AGENCY

LOCATED IN SECTIONS 5 & 8
T1N., R34E., W.M.,
UMATILLA COUNTY, OREGON.

RECEIVED BY

Umatilla County Surveyor
10-10
KR
10-158-B



LEGEND

- - FOUND 2 1/4" BRASS CAP ON 2" GALV. IRON PIPE MONUMENTS BY C.E. REDFIELD, U.S. INDIAN SERVICE SURVEYOR, CIRCA 1917 TO 1919.
- - FOUND 3" BRASS CAP ON 2 1/2" STAINLESS STEEL PIPE PER BLM SURVEY UNDER SPECIAL INSTRUCTIONS DATED APRIL 4, 2002.
- - SET 5/8" REBAR, LENGTH AS STATED IN CORNER NOTES, WITH 2" ALUMINUM CAP. SEE CORNER NOTES.
- (XOX)C - RECORD DIMENSION PER SUB-SUBDIVISION SURVEYS BY JAMES P. CURRIN, UNDER CONTRACT NO. 537, DATED MARCH 5, 1889.
- (XOX)R - RECORD DIMENSION FROM SURVEYS BY C.E. REDFIELD, U.S. INDIAN SERVICE SURVEYOR, BETWEEN 1917 AND 1919.
- (XOX) - RECORD DIMENSION PER SURVEY NO. 04-49-C.