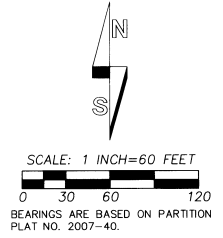
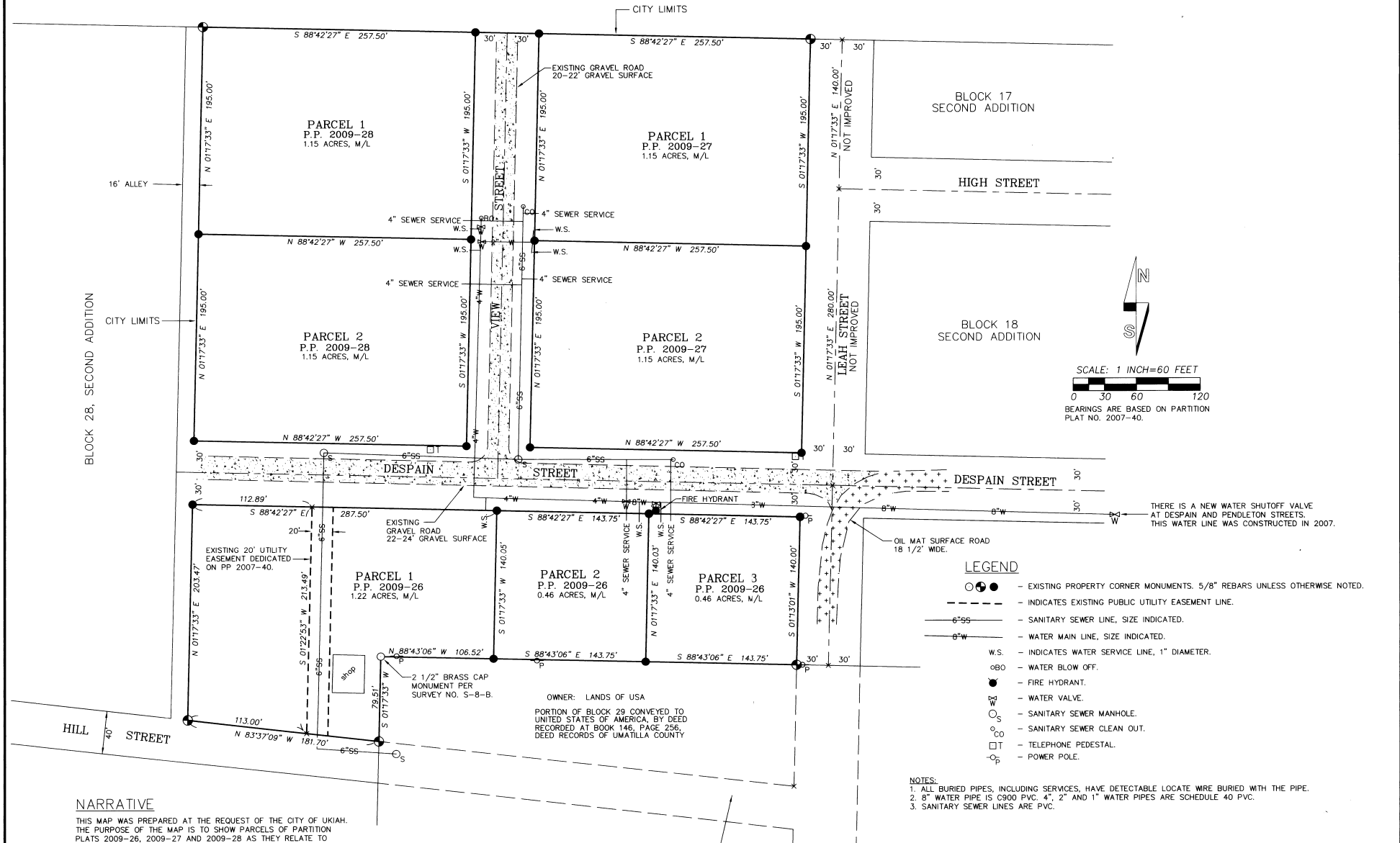


INDEX MAP FOR VAN DORN PARTITIONS



LEGEND

- - EXISTING PROPERTY CORNER MONUMENTS, 5/8" REBARS UNLESS OTHERWISE NOTED.
- - INDICATES EXISTING PUBLIC UTILITY EASEMENT LINE.
- 6"SS - SANITARY SEWER LINE, SIZE INDICATED.
- 8"W - WATER MAIN LINE, SIZE INDICATED.
- W.S. - INDICATES WATER SERVICE LINE, 1" DIAMETER.
- BO - WATER BLOW OFF.
- - FIRE HYDRANT.
- - WATER VALVE.
- S - SANITARY SEWER MANHOLE.
- CO - SANITARY SEWER CLEAN OUT.
- - TELEPHONE PEDESTAL.
- P - POWER POLE.

NOTES:

1. ALL BURIED PIPES, INCLUDING SERVICES, HAVE DETECTABLE LOCATE WIRE BURIED WITH THE PIPE.
2. 8" WATER PIPE IS C900 PVC. 4", 2" AND 1" WATER PIPES ARE SCHEDULE 40 PVC.
3. SANITARY SEWER LINES ARE PVC.

NARRATIVE

THIS MAP WAS PREPARED AT THE REQUEST OF THE CITY OF UKIAH. THE PURPOSE OF THE MAP IS TO SHOW PARCELS OF PARTITION PLATS 2009-26, 2009-27 AND 2009-28 AS THEY RELATE TO EACH OTHER AND TO SHOW SEWER AND WATER LINES AND STREETS CONSTRUCTED BY MR. VAN DORN.

THIS MAP IS RECORDED AT THE REQUEST OF THE CITY OF UKIAH. FOR RECORD SURVEY DATA AND DEDICATIONS, SEE PARTITION PLATS RECORDED AT THE UMATILLA COUNTY OFFICE OF RECORDS.

PORTION OF HILL STREET & LEAH STREET VACATED BY COUNTY COMMISSIONER'S ORDER DATED DECEMBER 6, 1937.

REGISTERED PROFESSIONAL LAND SURVEYOR

William R. Wells
OREGON
JULY 22, 1977
WILLIAM R. WELLS
1106
RENEWS 6/30/10

WELLS SURVEYING
2602 N.E. RIVERSIDE PLACE
P.O. BOX 1696
PENDLETON, OR 97801
PHONE: (541) 276-6362

DATE: 08/09 DR. BY: JMW
CK. BY: WRW NO: 06-1068

PROJECT: VANDORNINDEX

INDEX MAP FOR: VAN DORN PARTITIONS

IN THE SW 1/4 OF THE NW 1/4 SECTION 14, TOWNSHIP 5 SOUTH, RANGE 31 EAST, W.M., CITY OF UKIAH, UMATILLA COUNTY, OREGON.

9-07
RK
09-122-B