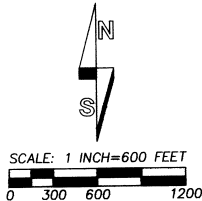
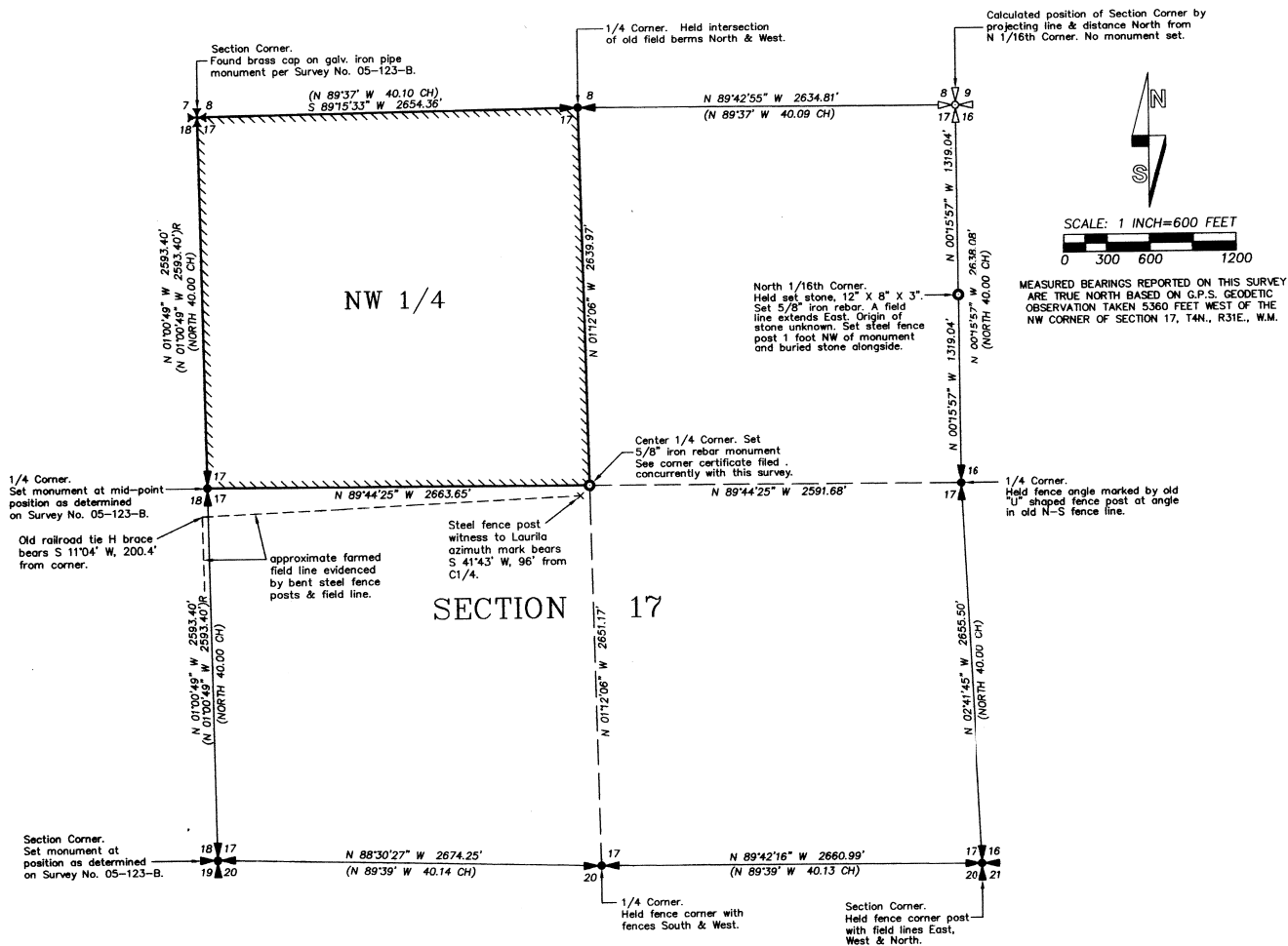


# RECORD OF SURVEY



## NARRATIVE

THIS SURVEY WAS MADE AT THE REQUEST OF TOM LANDRETH TO MONUMENT THE NORTHWEST QUARTER OF SECTION 17, T4N., R31E., W.M. THE NORTHWEST QUARTER OF SECTION 17 IS OWNED BY VIRGINIA LOWE. THE BOUNDARIES OF THE NORTHWEST QUARTER WERE ALSO "POSTED" WITH INTER-VISIBLE STEEL FENCE POSTS TO LOCATE LINE BETWEEN MONUMENTED CORNERS.

THE AREA HAS BEEN EXTENSIVELY FARMED SINCE THE GLO SURVEY MADE IN 1866. IN 1916, THE COAST AND GEODETIC SURVEY ESTABLISHED TRIANGULATION STATION "LAURILA", APPROXIMATELY 192 FEET EAST OF THE SOUTH 1/4 CORNER OF SECTION 17. IN 1963, A AZIMUTH MARK WAS ESTABLISHED FOR THE STATION, SOUTHWEST OF THE CENTER 1/4 CORNER OF SECTION 17 AS DETERMINED ON THIS SURVEY. THE AZIMUTH MARK IS REFERENCED BY A WITNESS SIGN ON STEEL FENCE POST WHICH COULD PARTLY EXPLAIN THE LOCATION OF THE OLD FIELD LINE SOUTH OF THE SOUTH LINE OF THE NORTHWEST QUARTER OF SECTION 17 AS DETERMINED ON THIS SURVEY.

POSITIONS FOR THE SOUTHWEST CORNER AND WEST 1/4 CORNERS OF SECTION 17 WERE DETERMINED BY THIS SURVEYOR ON SURVEY NO. 05-123-B, IN 2005. THE NORTHWEST CORNER OF SECTION 17 WAS MONUMENTED UNDER SURVEY NO. 05-123-B.

AFTER CONFIRMATION BY SURVEY, I HELD THE INTERSECTION OF FIELD BERMS NORTH AND WEST FOR THE NORTH FOR THE NORTH 1/4 CORNER OF SECTION 17.

AT THE SOUTH 1/4 CORNER OF SECTION 17, I HELD THE FENCE CORNER INTERSECTION FOR THE SOUTH 1/4 CORNER. THIS FENCE INTERSECTION WAS ALSO HELD BY SURVEYOR WILLIAM HAGEDORN, IN 1986 UNDER SURVEY NO. 86-33-B WHEN HE SURVEYED THE SOUTH FORK MICROWAVE SITE. THERE WAS A FENCE LINE EXTENDING EAST FROM THE CORNER POINT AT THE TIME OF THE HAGEDORN SURVEY.

AT THE SOUTHEAST CORNER OF SECTION 17, I HELD A RAILROAD THE FENCE POST WITH OLD FIELD LINES EXTENDING SOUTH, WEST AND NORTH.

FOR THE EAST 1/4 CORNER OF SECTION 17, I HELD THE SLIGHT ANGLE POINT IN A OLD NORTH-SOUTH FENCE LINE. THE ANGLE POINT WAS MARKED WITH A OLD "U" SHAPED FENCE POST, DIFFERENT FROM OTHER FENCE POSTS IN THE AREA. IN DIGGING AROUND THIS FENCE POST, WE RECOVERED ROTTED CHUNKS OF WOOD AND OLD SURVEY RIBBON, BURIED UNDERGROUND.




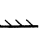
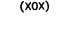
AT THE NORTH 1/16TH CORNER BETWEEN SECTIONS 16 AND 17, WE FOUND A SET, UNMARKED STONE AT A FIELD LINE EXTENDING EAST, HELD THE POSITION AND SET A NEW REBAR MONUMENT.

OTHER THAN SURVEY REFERENCES NOTED, WE DID NOT FIND SURVEY RECORD REFERENCES TO ANY OF THE CORNERS REMONUMENTED ON THIS SURVEY.

SEE CORNER CERTIFICATES FOR MONUMENTED PUBLIC LAND SURVEY CORNERS, FILED CONCURRENTLY WITH THIS RECORD OF SURVEY.

THE SURVEY WAS MADE WITH TRIMBLE 5700 SERIES GEODETIC G.P.S. RECEIVERS OPERATED IN REAL TIME KINEMATIC MODE. G.P.S. TIES TO CONTROLLING CORNERS AND NEW CORNERS ESTABLISHED WERE VERIFIED BY REDUNDANT G.P.S. MEASUREMENTS.

## LEGEND

-  SECTION CORNER MONUMENTED WITH 2 3/8" BRASS CAP ON 1 1/4" X 30" GALVANIZED IRON PIPE. SEE CORNER CERTIFICATE FILED CONCURRENTLY.
-  1/4 CORNER MONUMENTED WITH 2 3/8" BRASS CAP ON 1 1/4" X 30" GALVANIZED IRON PIPE. SEE CORNER CERTIFICATE FILED CONCURRENTLY.
-  SET 5/8 BY 30" IRON REBAR WITH 1 1/4" RED PLASTIC CAP MARKED "OR PLS 1106 WA PLS 17372".
-  FOUND 2 1/2" BRASS CAP ON GALVANIZED IRON PIPE MONUMENT. CORNER REESTABLISHED ON SURVEY NO. 05-123-B.
-  SET INTERVISIBLE STEEL FENCE POSTS ON PROPERTY LINE.
- (XOX) RECORD DIMENSION FROM GLO SURVEY BY W.H. ODELL, UNDER CONTRACT NO. 114, DATED JULY 2, 1866.
- (XOX)R RECORD DIMENSION FROM SURVEY NO. 05-123-B.

REGISTERED  
PROFESSIONAL  
LAND SURVEYOR

*William R. Wells*

OREGON  
JULY 22, 1977  
WILLIAM R. WELLS  
1106  
RENEWS 6/30/08

WILLIAM R. WELLS, PLS  
2602 N.E. RIVERSIDE PLACE  
P.O. BOX 1696  
PENDLETON, OR 97801  
PHONE: (541) 276-6362

DATE: FEB. 2007 DR. BY: JMW  
CK. BY: WRW NO: 06-1098

PROJECT:

LANDRETH  
SURVEY FOR:  
TOM LANDRETH  
OF LAND OWNED BY VIRGINIA LOWE

LOCATED IN SECTION 17,  
T4N., R31E., W.M.  
UMATILLA COUNTY, OREGON.

Umatilla County Surveyor  
Date: 03-07  
Checked: RK  
07-30-B