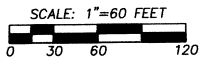
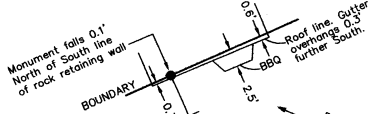


# RECORD OF SURVEY



MONUMENTS ARE ESTABLISHED ON THE SOUTH LINE OF RESERVE ADDITION. DISTANCES BETWEEN MONUMENTS WERE CALCULATED BY SINGLE PROPORTION MEASURE ON THE OVERLAP LINE OF HILLVIEW ADDITION BETWEEN FOUND MONUMENTS AT THE N.E. CORNER OF LOT 1 AND N.W. CORNER OF LOT 3 & INTERSECTED WITH THE SOUTH LINE OF RESERVE ADDITION ON HILLVIEW ADDITION LOT LINES. THE COURSE BETWEEN HILLVIEW PLAT MONUMENTS AT THE N.E. CORNER OF LOT 1 AND N.W. CORNER OF LOT 3 IS S 66°27'43" W, 293.16'.

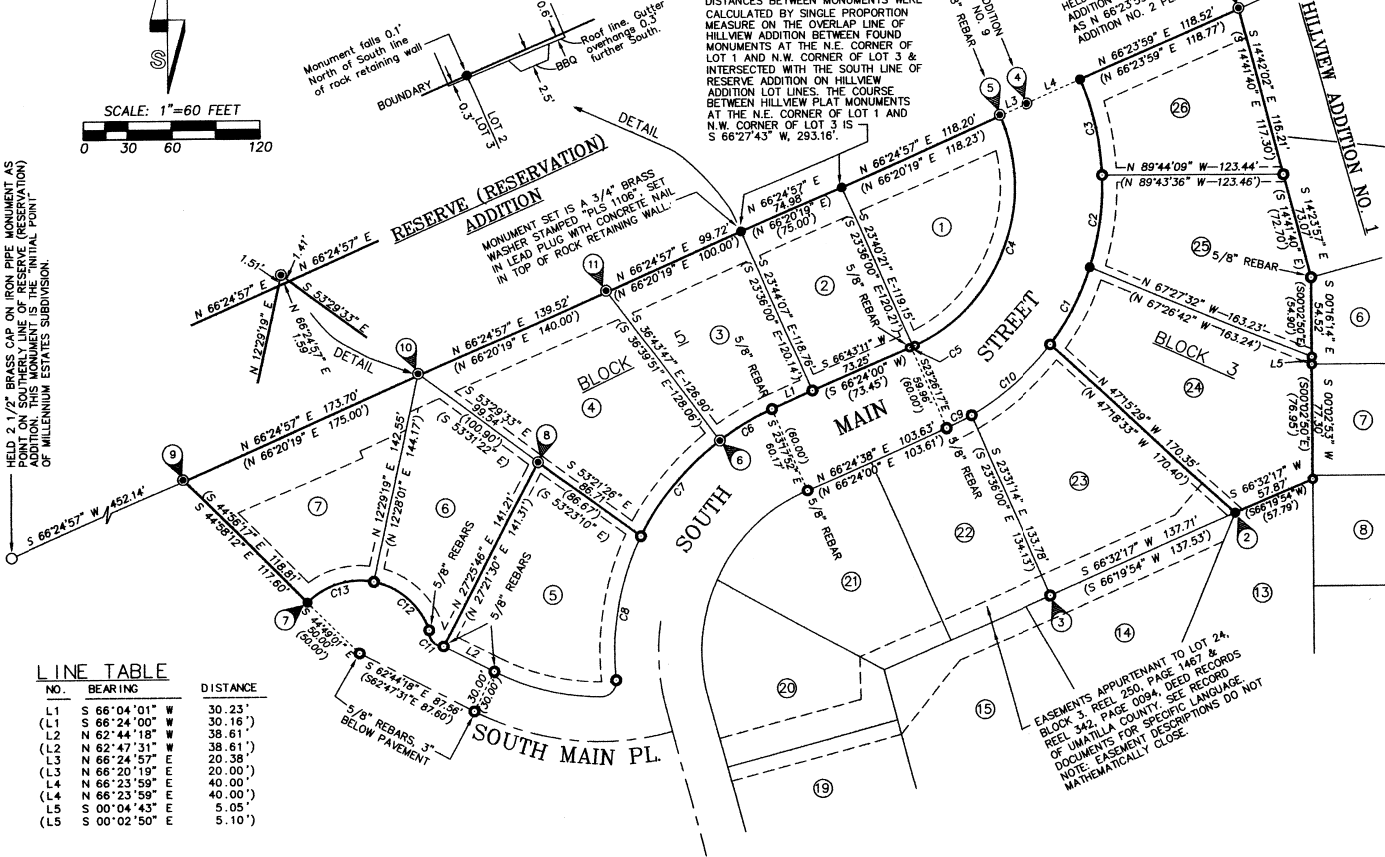
Held 2 1/2" BRASS CAP ON IRON PIPE MONUMENT AS POINT ON SOUTHERN LINE OF RESERVE (RESERVATION) OF MILLENNIUM ESTATES SUBDIVISION.



MONUMENT SET IS A 3/4" BRASS MONUMENT STAMPED WASHER SET IN LEAD PLUG WITH CONCRETE NAIL IN TOP OF ROCK RETAINING WALL.

"BASIS OF BEARINGS" HELD LINE BETWEEN RESERVE ADDITION MONUMENTS 9 & 10 AS N 66°23'59" E PER HILLVIEW ADDITION NO. 2 PLAT.

HELD RESERVE ADDITION MONUMENT NO. 10. THE ORIGINAL STONE WITH "X" FOR LINE. STONE MONUMENT IS BURIED 10" BELOW GROUND.



## LEGEND

- SET 5/8" BY 24" IRON REBAR WITH 1 1/4" RED PLASTIC CAP MARKED "OR PLS 1106 WA PLS 17372", UNLESS OTHERWISE NOTED.
- FOUND AND HELD POSITION OF ORIGINAL HILLVIEW ADDITION NO. 2 PLAT MONUMENT. MONUMENTS ARE 1/2" REBAR UNLESS OTHERWISE NOTED.
- ⊙ FOUND ORIGINAL HILLVIEW ADDITION NO. 2 PLAT MONUMENT OUT OF POSITION. CALCULATED TRUE POSITION BASED ON THIS SURVEY. SEE CORRESPONDING NUMBER IN NOTE TABLE.
- (XOX) RECORD DIMENSION FROM THE PLAT OF HILLVIEW ADDITION NO. 2.
- Ⓜ INDICATES LOT NUMBER IN BLOCKS 3 OR 5, HILLVIEW ADDITION NO. 2.
- - - INDICATES LINE OF EASEMENT OF RECORD. EASEMENTS OF RECORD ARE SHOWN BUT NOT ANNOTATED. CONSULT RECORD EASEMENT DOCUMENTS FOR WIDTHS AND OTHER CONDITIONS. ALL LOTS IN BLOCKS 3 & 5 OF HILLVIEW ADDITION HAVE A 5 FOOT UTILITY EASEMENTS ON ALL SIDE LOT LINES.

## NOTE TABLE

- 1 THE INITIAL POINT FOR HILLVIEW ADDITION NO. 2, A 2" DIA. IRON PIPE BURIED 1 FOOT BELOW GROUND BEARS N 14°42'02" W, 0.72' FROM CALCULATED POINT ON SOUTH LINE OF RESERVE ADDITION.
- 2 REESTABLISHED CORNER POINT BY SINGLE PROPORTION MEASUREMENT BETWEEN ADJACENT CORNER POINTS.
- 3 FOUND AND HELD A CONCRETE NAIL WITH BRASS WASHER AT ASPHALT SURFACE. ORIGIN UNKNOWN.
- 4 RESERVE ADDITION MONUMENT NO. 9, FOUND & HELD A 3 1/2" BRASS DISK FLUSH WITH ASPHALT PAVING.
- 5 FOUND BENT 5/8" REBAR BEARS N 23°29'45" W, 0.87' FROM CALCULATED POINT ON SOUTH LINE OF RESERVE ADDITION.
- 6 FOUND BENT 1/2" REBAR BEARS S 63°55'01" W, 0.49' FROM CALCULATED POSITION. POSITION WAS CALCULATED ALONG CURVE, BY SINGLE PROPORTION MEASURE BETWEEN ADJACENT CORNERS.
- 7 CALCULATED POSITION BY HOLDING RECORD PLAT ANGLE & DISTANCE MEASURED FROM MONUMENT AT CENTER OF CURVE - DE-SAC, BACK SIGHTING CENTERLINE STREET P.C. MONUMENT.
- 8 CALCULATED POSITION WITH REFERENCE TO ADJACENT FOUND MONUMENTS N.W. AND S.E.. FOUND MONUMENT BEARS S 23°28'13" E, 0.55' FROM CALCULATED POSITION.
- 9 FOUND 1/2" REBAR BEARS N 44°58'12" W, 1.36' FROM CALCULATED POINT ON SOUTH LINE OF RESERVE ADDITION.
- 10 FOUND 1/2" REBAR BEARS N 12°29'19" E, 1.51' & N 53°29'33" W, 1.41' FROM CALCULATED POSITIONS ON THE SOUTH LINE OF RESERVE ADDITION.
- 11 FOUND 1/2" REBAR BEARS N 36°43'47" W, 1.14' FROM CALCULATED POINT ON SOUTH LINE OF RESERVE ADDITION.

NO.	BEARING	DISTANCE
L1	S 66°04'01" W	30.23'
L2	S 66°24'00" W	30.16'
L3	N 62°44'18" W	38.61'
L4	N 62°47'31" W	38.61'
L5	N 66°24'57" E	20.38'
L6	N 66°20'19" E	20.00'
L7	N 66°23'59" E	40.00'
L8	N 66°23'59" E	40.00'
L9	S 00°04'43" E	5.05'
L10	S 00°02'50" E	5.10'

NO.	DELTA	RADIUS	LENGTH	CHORD	CHORD BRG
C1	18°55'51"	179.78'	59.40'	59.13'	S 27°42'09" W
C2	20°28'35"	179.78'	64.25'	59.04'	S 27°36'15" W
C3	21°09'57"	179.78'	64.15'	63.91'	S 07°59'56" W
C4	88°51'35"	119.78'	185.77'	63.81'	S 12°49'20" E
C5	0°45'50"	119.78'	187.17'	66.04'	N 13°02'18" W
C6	13°09'23"	179.86'	41.30'	67.05'	S 21°08'35" W
C7	27°14'01"	179.86'	41.26'	68.70'	N 20°53'41" E
C8	32°06'24"	179.86'	100.79'	1.60'	S 66°22'30" W
C9	6°04'50"	179.78'	19.08'	1.55'	N 66°01'45" E
C10	23°17'03"	179.78'	73.06'	41.21'	N 59°58'03" E
C11	98°37'50"	10.00'	17.21'	41.17'	N 59°49'43" E
C12	60°01'20"	50.00'	52.38'	84.69'	N 39°46'21" E
C13	56°22'03"	50.00'	49.19'	84.61'	N 39°39'11" E
C14				99.47'	N 10°04'56" E
C15				99.45'	N 10°00'00" E
C16				19.07'	N 63°48'11" E
C17				19.12'	N 63°21'01" E
C18				72.56'	N 48°48'36" E
C19				72.45'	N 48°40'46" E
C20				15.17'	N 40°20'41" W
C21				15.12'	S 40°35'05" E
C22				50.02'	S 48°26'18" E
C23				50.09'	S 48°26'20" E
C24				47.23'	N 73°22'01" E
C25				47.23'	N 73°18'47" E

## NARRATIVE:

THIS SURVEY WAS MADE AT THE REQUEST OF CHAD WINDHAM TO RECOVER OR REMONUMENT LOT CORNERS ON LOTS 24, 25 AND 26, BLOCK 3 AND LOTS 1 THROUGH 4 AND 6 AND 7 OF BLOCK 5, HILLVIEW ADDITION NO. 2. MONUMENTS FOUND OR ESTABLISHED ARE SHOWN AND NOTED ON THIS RECORD OF SURVEY. RECOVERED ORIGINAL PLAT MONUMENTS ALONG THE NORTH LINE OF BLOCK 5, OVERLAP ONTO THE RESERVE ADDITION. ALSO, THE RECOVERED "INITIAL POINT" MONUMENT OF THE HILLVIEW NO. 2 SUBDIVISION OVERLAPS ONTO RESERVE ADDITION. OVERLAP DIMENSIONS ARE NOTED, AS ARE THE DIMENSIONS OF PORTIONS OF LOTS SOUTH OF THE RESERVE ADDITION, WHERE NEW MONUMENTS WERE SET ON THE NORTH LINE OF HILLVIEW NO. 2 ADDITION, THEY ARE ESTABLISHED ON THE SOUTH LINE OF THE RESERVE ADDITION, THE SENIOR BOUNDING LINE.

MANY OF THE CURVES ON LOT BOUNDARIES ARE NON-TANGENT BECAUSE FOUND PLAT MONUMENT POSITIONS WERE HELD. RECORD CURVE RADIUS DIMENSIONS WERE HELD IN CALCULATING CURVE DATA. DISTANCES MEASURED BETWEEN RECOVERED PLAT MONUMENTS FIT THE RECORD REASONABLY WELL IN MOST CASES, BUT THERE ARE SUBSTANTIAL ERRORS IN RECORD PLAT BEARINGS BETWEEN FOUND MONUMENTS.

WHERE EXISTING PLAT MONUMENTS WERE RECOVERED, NEW MONUMENTS WERE NOT ESTABLISHED. SOME OF THE ORIGINAL PLAT MONUMENTS ARE BENT. IF PLAT MONUMENTS WERE NOT HELD FOR POSITION, THE BEARING AND DISTANCE FROM THE CALCULATED POSITION TO THE EXISTING MONUMENT IS NOTED.

THIS SURVEY WAS MADE USING TRIMBLE 5700 GEODETIC G.P.S. RECEIVERS OPERATED IN REAL TIME KINEMATIC MODE AND WITH A SOKKIA SET 48 FIVE SECOND TOTAL STATION. NEW MONUMENTS WERE ESTABLISHED BY RADIAL METHODS AND VERIFIED BY SEPARATE OBSERVATIONS TO DIFFERENT BACK SIGHTS.

REGISTERED PROFESSIONAL LAND SURVEYOR  
*Will. Rubel*  
 OREGON  
 JULY 22, 1977  
 WILLIAM R. WELLS  
 1106  
 RENEWS 6/30/08

WILLIAM R. WELLS, PLS  
 2602 N.E. RIVERSIDE PLACE  
 P.O. BOX 1696  
 PENDLETON, OR 97801  
 PHONE: (541) 276-6362

DATE: 08/06 DR. BY: JMW/WRW  
 CK. BY: JMW NO: 06-1079  
 REC'D BY: JMW

PROJECT: WINDHAM/ROTI  
 SURVEY FOR:  
 CHAD & CARLA WINDHAM  
 LOTS 24, 25 & 26, BLOCK 3 & LOTS 1, 2, 3, 4, 6 & 7, BLOCK 5, HILLVIEW ADDITION NO. 2, IN THE CITY OF PENDLETON,  
 SITUATED IN THE SW 1/4 OF SECTION 11, T2N., R32E., W.M., UMATILLA COUNTY, OREGON.

Umatilla County Survey  
 Date: 7-06  
 Rec'd by: KR  
 No. 06-502-B

11CB