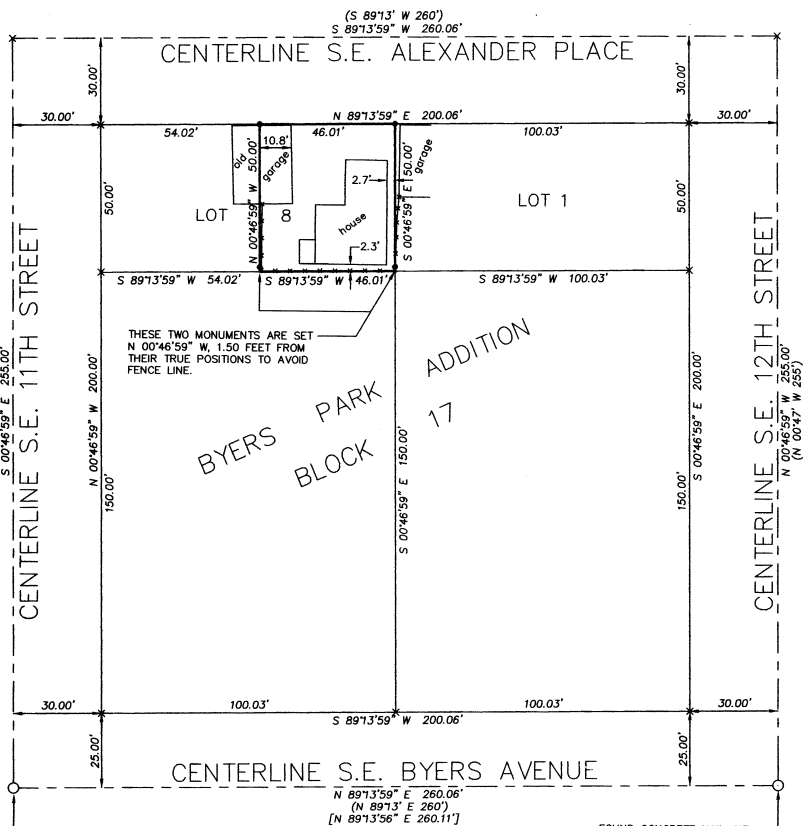
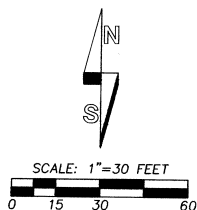


# RECORD OF SURVEY

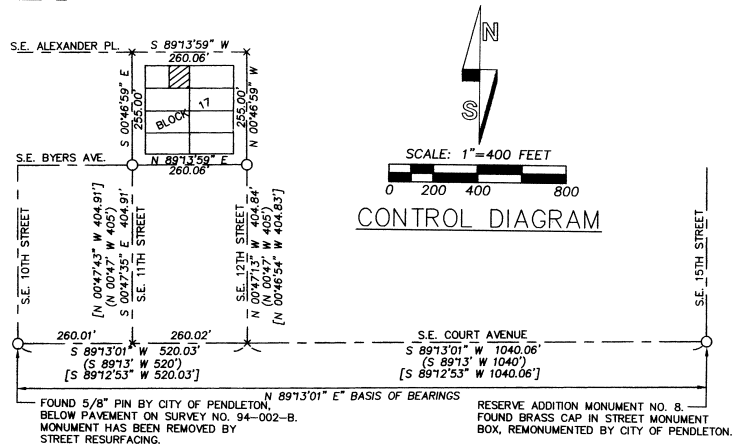


THESE TWO MONUMENTS ARE SET N 00°46'59" W, 1.50 FEET FROM THEIR TRUE POSITIONS TO AVOID FENCE LINE.

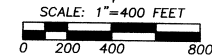
CONCRETE NAIL WITH BRASS WASHER AS REESTABLISHED ON SURVEY NO. 94-002-B HAS BEEN REMOVED BY SEWER LINE CONSTRUCTION. RE-ESTABLISHED POSITION WITH REFERENCE TO TIES MADE ON SURVEY NO. 94-002-B, AND TIES TO THE TWO REMAINING OLD LEAD PLUGS IN FACE OF CURB ON NORTH SIDE OF STREET.

FROM REESTABLISHED POINT POSITION:  
LEAD PLUG BEARS N 47°51' W, 28.82' (28.9' RECORD)  
LEAD PLUG BEARS N 48°58' E, 29.14' (29.3' RECORD)

FOUND CONCRETE NAIL WITH BRASS WASHER AS REESTABLISHED ON SURVEY NO. 94-002-B, FROM LEAD PLUG REFERENCES IN FACES OF CURBS, FOUND IN CITY OF PENDLETON RECORDS.



CONTROL DIAGRAM



### LEGEND

- - SET 5/8" BY 24" IRON REBAR WITH 1 1/4" RED PLASTIC CAP MARKED "ORPLS 1106 WA PLS 17372".
- - MONUMENT FOUND AS NOTED.
- x - CALCULATED POINT ONLY, NOT SET OR FOUND.
- (XOX) - RECORD DIMENSION FROM PLAT OF RESERVE ADDITION OR PLAT OF BYERS PARK ADDITION.
- [XOX] - RECORD DIMENSION FROM SURVEY NO. 94-002-B.
- - FENCE LINE, NOT ALL ARE SHOWN.

### NOTE:

RECORD DIMENSIONS FOR LOTS IN BLOCK 17 OF BYERS PARK ADDITION ARE 50 BY 100 FEET, AT RIGHT ANGLES TO ONE ANOTHER.

### NARRATIVE:

THIS SURVEY WAS MADE AT THE REQUEST OF DAVE VANDERLIP AND PEGGY BERRY TO LOCATE AND MONUMENT THE BOUNDARIES OF THE EAST 46 FEET OF LOT 8, BLOCK 17, BYERS PARK ADDITION TO PENDLETON.

SURVEY CONTROL POINTS UTILIZED IN MAKING THE SURVEY ARE SHOWN AND NOTED. BLOCK 17 OF BYERS PARK ADDITION IS BASICALLY A REPLAT OF THE SOUTH 200 FEET OF BLOCK 11 OF RESERVE. (ALSO KNOWN AS RESERVATION). ADDITION, THEREFORE, MONUMENTS ESTABLISHED IN THE RESERVE ADDITION WILL ALSO CONTROL BLOCK 17 OF BYERS PARK ADDITION. I USED LINES AT A RIGHT ANGLE TO THE CENTER LINE OF THE SE COURT AVENUE BASELINE TO EXTEND NORTH FROM RECOVERED OR REESTABLISHED MONUMENT POSITIONS AT INTERSECTION OF CENTER LINES OF SE BYERS AVENUE WITH SE 11TH AND SE 12TH STREETS, MEASURING NORTH THE RECORD DISTANCES FROM THE BYERS PARK ADDITION PLAT.

THE BOUNDARIES OF THE EAST 46 FEET OF LOT 8, BLOCK 17, BYERS PARK ADDITION ARE MONUMENTED AS SHOWN.

THE SURVEY WAS MADE BY A 2 PERSON CREW USING A SOKKIA SET 48 FIVE SECOND TOTAL STATION BY A COMBINATION OF CLOSED TRAVERSES AND RADIAL TIES. MONUMENTS WERE ESTABLISHED BY RADIAL METHODS AND VERIFIED BY SEPARATE OBSERVATIONS TO DIFFERENT BACK SIGHTS.

THIS SURVEY WAS FOR BOUNDARY ONLY. EASEMENTS OR ENCUMBRANCES WHICH MAY AFFECT THE EAST 46 FEET OF LOT 8, BLOCK 17, BYERS PARK ADDITION WERE NOT INVESTIGATED OR ADDRESSED.

REGISTERED PROFESSIONAL LAND SURVEYOR

*Will. R. Wells*

OREGON  
JULY 22, 1977  
WILLIAM R. WELLS  
1106  
RENEWS 6/30/08

WILLIAM R. WELLS, PLS  
2602 N.E. RIVERSIDE PLACE  
P.O. BOX 1696  
PENDLETON, OR 97801  
PHONE: (541) 276-6362

DATE: 08/06 DR. BY: JMW/WRW  
CK. BY: WRW NO: 06-1072

PROJECT: *vanderlip*  
SURVEY FOR:  
PEGGY BERRY  
OF THE EAST 46 FEET OF LOT 8,  
BLOCK 17, BYERS PARK ADDITION,  
LOCATED IN THE SE 1/4,  
SECTION 2, T2N., R32E., W.M.,  
CITY OF PENDLETON,  
UMATILLA COUNTY, OREGON

Umatilla County Surveyor

Date: 8-06

020C