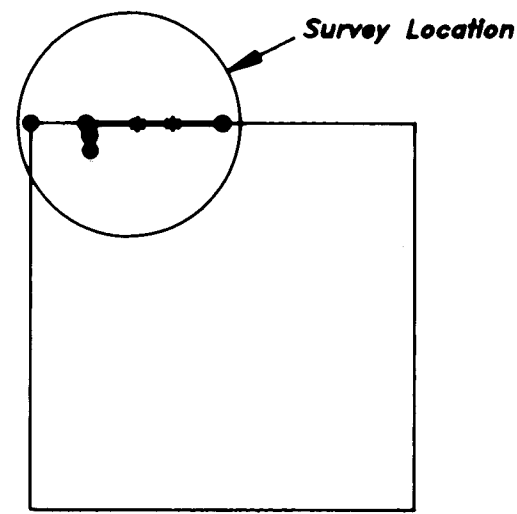
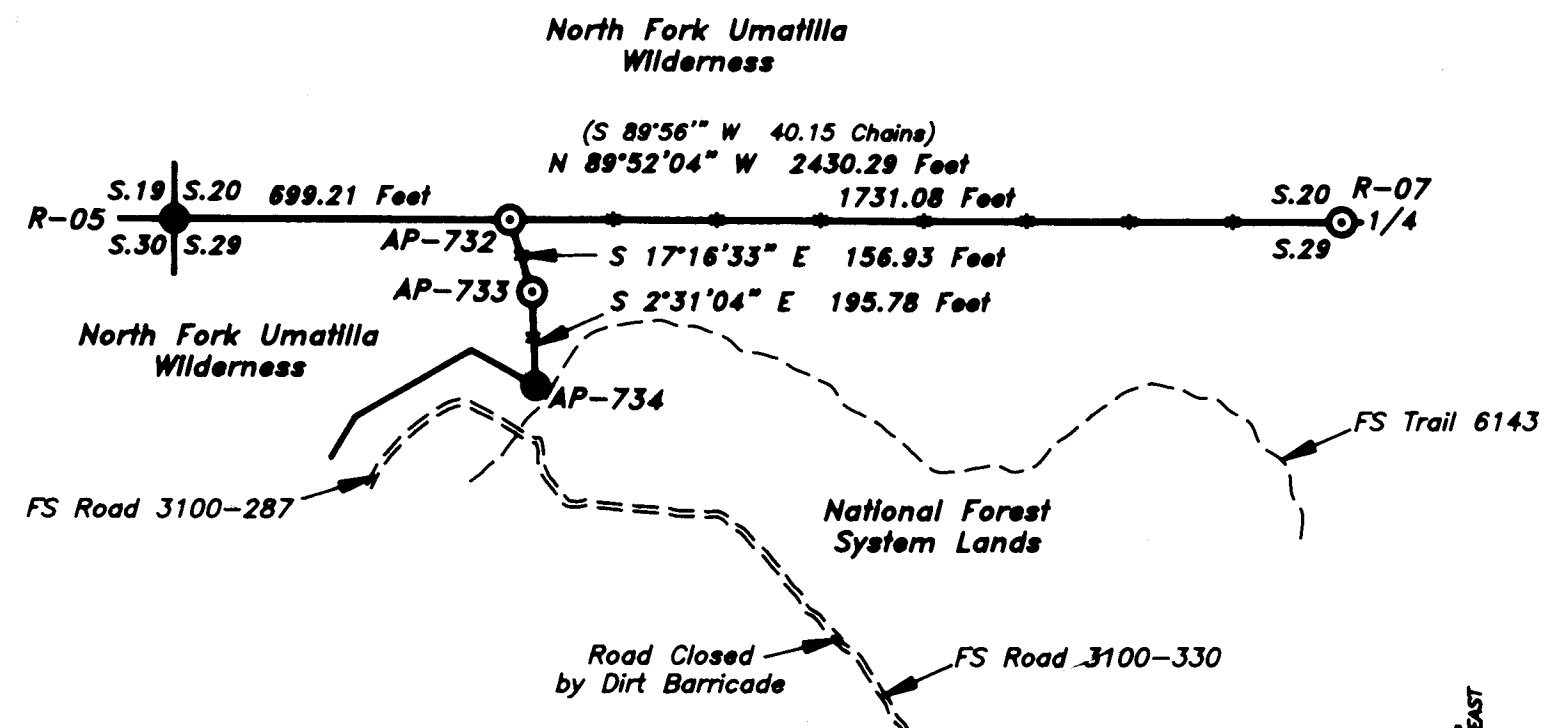


Survey for
Umatilla National Forest
of
North Fork Umatilla Wilderness
From 1/4 Corner of sections 20 and 29 to Angle Point 734
Located in T. 3 N., R. 38 E.,
Willamette Meridian
Umatilla County, Oregon
June - August, 2004

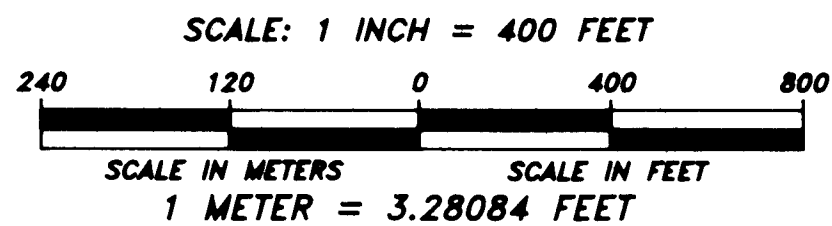


Section 29 Diagram
Not to Scale

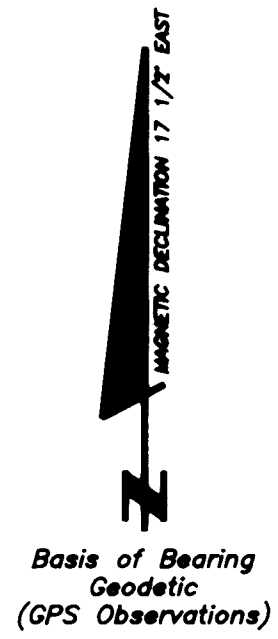


LEGEND

- MONUMENT FOUND
- MONUMENT SET
- POSTED WILDERNESS BOUNDARY
- () RECORD MEASUREMENT (KIMBRELL, 1903)



BEARINGS SHOWN ARE MEAN GEODETIC BEARINGS AND DISTANCES ARE GROUND MEASUREMENTS BASED ON A MEAN PROJECT ELEVATION OF 5000 FEET.



I CERTIFY THAT THIS SURVEY WAS PERFORMED AT THE REQUEST OF THE UMATILLA NATIONAL FOREST

David A. Schlaich 11/17/04
FOREST SUPERVISOR DATE

REGISTERED PROFESSIONAL LAND SURVEYOR

David A. Schlaich
OREGON
JULY 16, 1987
DAVID A. SCHLAICH
2308
RENEWAL DATE: 06/30/2008

I, David A. Schlaich, a Registered Land Surveyor in the state of Oregon, hereby certify that this plat and the notes hereon are a true and correct representation of a survey I conducted from June 14 to August 31 of 2004, at the request of the Umatilla National Forest, in accordance with the statutes of the state of Oregon and the Bureau of Land Management's 1973 Manual of Surveying Instructions.

David A. Schlaich 11/17/2004
DAVID A. SCHLAICH -- RLS 2308
UMATILLA NATIONAL FOREST
2517 S.W. HAILEY AVENUE
PENDLETON, OREGON 97801
PHONE: (541) 278-3716

Narrative

Purpose:
The purpose of this survey was to monument and mark the boundary of the North Fork Umatilla Wilderness from the 1/4 corner of sections 19 and 20 to Angle Point 734.

History:
1899 - 1903, John W. Kimbrell, U.S. Deputy Surveyor, subdivided the township under General Land Office Contract No. 700.

1984, The North Fork Umatilla Wilderness is entered into the National Wilderness Preservation System by the Act of June 26, 1984 (Public Law 98-328).

1987, The legal boundary description of the North Fork Umatilla Wilderness is approved by the Regional Forester, Pacific Northwest Region of the U.S. Forest Service.

1996, David A. Schlaich, Registered Land Surveyor No. 2308, establishes the Wilderness Boundary of the North Fork Umatilla Wilderness from Angle Point 734 to Angle Point 799. Survey is on file at the Supervisor's Office of the Umatilla National Forest located at Pendleton, Oregon.

2000, David A. Schlaich, Registered Land Surveyor No. 2308, re-monuments the corner of sections 19, 20, 29 and 30 from original evidence. Corner recordation form R6-7100-57 on file at the Umatilla County Surveyor's Office.

Procedures:
The description utilized to locate the wilderness boundary was obtained from the open 2320 Files located in the Supervisor's Office of the Umatilla National Forest located at Pendleton, Oregon.

This segment of the wilderness boundary as described starts at a point on the 4600 foot contour on the section line between sections 20 and 29 (AP-731). The boundary then follows along the section line to a point where it intersects the crest of a ridge (AP-732). The boundary then ascends along the crest of the ridge to a point which is 100 feet northerly of and perpendicular to the centerline of USFS Road 3100-287 (AP-734).

This survey commenced at the 1/4 corner of sections 20 and 29, which was discovered to be located at an elevation greater than 4600 feet, and this survey terminated at AP-734, which was established in 1996.

Angle Point 732 was established on the section line between sections 20 and 29 on the crest of a ridge as described in the legal boundary description. Angle Point 733 was established on the crest of the ridge as called for in the boundary description. I found during this survey that the metes and bounds measurements of the Legal Boundary Description from Angle Point 732 to Angle Point 734 did not follow the crest of the ridge as described, so I ignored the metes and bounds measurements when establishing this Angle Point.

The survey was conducted using three Trimble 4700 GPS (Global Positioning System) dual frequency receivers and a Topcon GPT-6005C Total Station.

The Trimble 4700 GPS receivers provided network and local control in conjunction with National Geodetic Survey's OPUS (On-line Positioning User Service) system. The Base Stations used in conjunction with this project were CORS (Continuously Operating Reference Station) stations GOLDENDALE OBSER, CORS ARP, LIND HALL CORS ARP, and SPOKANE 1 CORS ARP. The GPS sessions were conducted using static measurement techniques and the measurements were processed using Trimble's Geomatics Office Software (version 1.62).

All GPS measurements were made in accordance with "Standards and Guidelines For Cadastral Surveys Using Global Positioning Methods" dated May 9, 2001, version 1.0 by U.S. Department of Agriculture, Forest Service and U.S. Department of Interior, Bureau of Land Management.

The Topcon GPT-6005C Total Station was used to run random traverses between GPS established points, set the corners established by this survey and make measurements to bearing trees.

Bureau of Land Management's WinCMM (version 2.0.2) software program was used to adjust traverse measurements using a least squares adjustment, compute corner positions, corner moves and posting offsets.

Distance measurements to the bearing trees were measured at the tree's side center 1 foot above the root crown. Bearing tree diameters were measured at breast height.

The wilderness boundary was posted by setting 6 foot steel U channel posts with "National Forest Wilderness" signs attached within one foot of the surveyed boundary.

The field notes for this survey are on file at the Supervisor's Office of the Umatilla National Forest located at Pendleton, Oregon.

04-212-B
Umatilla County Surveyor
Date 11-04
Rec'd by KR
No. 04-212-B

Survey for
Umatilla National Forest
of
North Fork Umatilla Wilderness
From 1/4 Corner of sections 20 and 29 to Angle Point 734
Located in T. 3 N., R. 38 E.,
Willamette Meridian
Umatilla County, Oregon
June - August, 2004

Corner Information

R-05

Section corner of sections 19, 20, 29 and 30.

History of original corner establishment:

1899, John W. Kimbrell, U.S. Deputy surveyor, while surveying the township under General Land Office Contract No. 700 established the corner as follows:
Set fir post 3 ft long 3 ins Sq 24 ins in the ground for Cor of Secs 19-20-29 and 30 marked T3N S20 on NE R38E S29 on SE S30 on SW and S19 on NW faces with 2 notches on S and 5 notches on S edges, from which:
a Willow 3 ins diam bears N68°E 17 lks dist marked T3NR38ES20B.T.
a Willow 3 ins diam bears S2°E 44 lks dist marked T3NR38ES29B.T.
a Tamarack 9 ins diam bears S1°W 175 lks dist marked T3NR38ES30B.T.
a Willow 3 ins diam bears N69°W 41 lks dist marked T3NR38ES19B.T.
NOTE: The General Land Office rejected John Kimbrell's 1899 survey.

1903, John W. Kimbrell, U.S. Deputy surveyor, while resurveying the township under General Land Office Contract No. 700 established the corner as follows:
Set basalt stone 18 X 9 X 6 ins, 12 ins in the ground for cor of secs 19, 20, 29 and 30 marked with 2 notches on S 5 notches on E sides, and raised a mound of stone 2 ft. base 1 1/2 ft high W of cor, pits impracticable.
From this cor the old sec cor, a post marked and witnessed bears N 595 lks dist. I destroy cor & marks on bearing trees.

2000, David A. Schlaich, Registered Land Surveyor No. 2308, Found a basalt stone 14 inches by 10 inches by 5 inches with 5 grooves on East face of the stone. Set in place of the stone a 2 1/2 inch diameter by 30 inch long aluminum pipe, with a 3 1/4 inch diameter aluminum cap, 22 inches in the ground (partially buried stone on North side of monument), Marked new BT's:
15 inch diameter Fir bears N. 85 1/2° E., 42.9 feet, scribed T3N R38E S20° BT.
11 inch diameter Western Larch bears S. 20° E., 14.9 feet, scribed T3N R38E S29° BT.
10 inch diameter Lodgepole Pine bears S. 43 1/2° W., 10.6 feet, scribed T3N R38E S30° BT.
24 inch diameter Western Larch bears N. 42 1/2° W., 56.9 feet, scribed T3N R38E S19° BT.
The bearing trees are double blazed and have a 3/4" diameter brass washer stamped "RLS 2308" nailed to the lower blaze near the "BT" scribing.

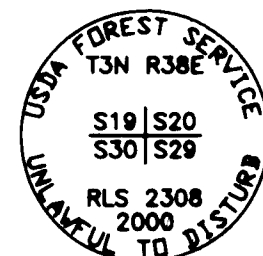
Description of corner evidence found:

Found a 2 1/2" aluminum pipe, with a 3 1/4" aluminum cap, projecting 10" above the ground with a portion of the original basalt stone visible on the North side of the monument, marked as shown, from which:
16" Douglas Fir bears N. 83 1/4° E., 42.9 feet, scribing T3NR38ES20° BT visible on double blaze with 3/4" brass washer "RLS 2308" nailed to the lower blaze.
11" Western Larch bears S. 23° E., 14.9 feet, scribing T3NR38ES29° BT visible on double blaze with 3/4" brass washer "RLS 2308" nailed to the lower blaze.
10" Lodgepole Pine bears S. 39 1/2° W., 10.6 feet, with pitched over double blaze and 3/4" brass washer "RLS 2308" nailed to the lower blaze.
25" Western Larch bears N. 45 1/4° W., 56.9 feet, scribing T3NR38ES19° BT visible on double blaze with 3/4" brass washer "RLS 2308" nailed to the lower blaze.

Description of monument and accessories I established to perpetuate the original location of this corner:

DATUM: NAD83(CORS96) (EPOCH:2002.0000)
STATE PLANE COORDINATES: Oregon North Zone in International Feet

Latitude	Longitude	Northing(y)	Easting(x)
45°43'02.83424" North	118°05'50.53253" West	756798.731	8815688.885



R-07

1/4 section corner of sections 20 and 29.

History of original corner establishment:

1899, John W. Kimbrell, U.S. Deputy surveyor, while surveying the township under General Land Office Contract No. 700 established the corner as follows:
Set fir post 3 ft long 3 ins Sq 24 ins in the ground for 1/4 Sec Cor marked 1/4 S20 on N face 29 on S face from which
a fir 10 ins diam bears N18°W 30 lks dist marked 1/4S20BT.
a fir 28 ins diam bears S35°E 4 lks dist marked 1/4S29BT.
NOTE: The General Land Office rejected John Kimbrell's 1899 survey.

1903, John W. Kimbrell, U.S. Deputy surveyor, while resurveying the township under General Land Office Contract No. 700 established the corner as follows:
Set granite stone 16 X 12 X 6 ins 10 ins in the ground for 1/4 sec cor, marked 1/4 on N face from which
a fir 22 ins diam bears S56°E 29 lks dist marked 1/4S29BT.
a fir 22 ins diam bears N71°W 39 lks dist marked 1/4S20BT.
From this cor. the old 1/4 sec cor, a post marked and witnessed bears N1 1/2°W 605 lks dist. I destroy post cor. and marks on bearing trees.

Description of corner evidence found:

Found stone 14" X 12" X 6" with no marks visible set 2" in the ground, from which:
32" Douglas Fir bears S. 50° E., 19.1 feet, with healed blaze (record S 56° E).
27" Douglas Fir bears N. 71° W., 23.5 feet, with axe marks and scribing visible on almost completely healed blaze (record 39 lks = 25.7 feet).

Description of monument and accessories I established to perpetuate the original location of this corner:

I replace the stone with a 2 1/2" by 28" aluminum pipe, with 3 1/4" aluminum cap, set 21" in the ground and bury the stone on the south side of the monument which is marked as shown. Marked new bearing trees:
11" Douglas Fir bears N. 66 1/4° E., 24.3 feet, scribed 1/4S20° BT on double blaze with 3/4" brass washer stamped "RLS 2308" nailed to the lower blaze.
18" Douglas Fir bears N. 12 1/2° W., 31.2 feet, scribed 1/4S20° BT on double blaze with 3/4" brass washer stamped "RLS 2308" nailed to the lower blaze.

DATUM: NAD83(CORS96) (EPOCH:2002.0000)
STATE PLANE COORDINATES: Oregon North Zone in International Feet

Latitude	Longitude	Northing(y)	Easting(x)
45°43'02.77890" North	118°05'16.28928" West	756865.513	8818117.532

AP-732
North Fork Umatilla Wilderness

History of original corner establishment:

None

Description of corner evidence found:

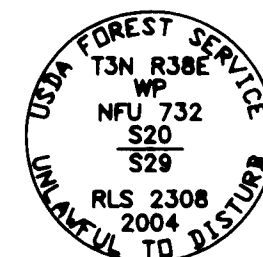
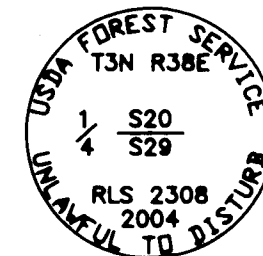
None

Description of monument and accessories I established to perpetuate the original location of this corner:

Set a 2 1/2" by 28" aluminum pipe, with 3 1/4" aluminum cap, 16" in the ground with a white SurvKap Mag. reference set in the bottom of the hole, marked as shown, from which:
6" Douglas Fir bears N. 5 1/2° E., 28.3 feet, scribed WPS20° BT on double blaze with 3/4" brass washer stamped "RLS 2308" nailed to the lower blaze.
9" Douglas Fir bears S. 50° W., 53.3 feet, scribed WPS29° BT on double blaze with 3/4" brass washer stamped "RLS 2308" nailed to the lower blaze.

DATUM: NAD83(CORS96) (EPOCH:2002.0000)
STATE PLANE COORDINATES: Oregon North Zone in International Feet

Latitude	Longitude	Northing(y)	Easting(x)
45°43'02.81832" North	118°05'40.68051" West	756817.915	8816387.624



AP-733

North Fork Umatilla Wilderness

History of original corner establishment:

None

Description of corner evidence found:

None

Description of monument and accessories I established to perpetuate the original location of this corner:

Set a 5/8" by 30" rebar, with 3 1/4" aluminum cap, 29" in the ground, marked as shown, from which:
5" Douglas Fir bears S. 66° E., 61.8 feet, scribed WB/733° BT on double blaze with 3/4" brass washer stamped "RLS 2308" nailed to the lower blaze.
5" Douglas Fir bears S. 22 1/2° E., 53.6 feet, scribed WB/733° BT on double blaze with 3/4" brass washer stamped "RLS 2308" nailed to the lower blaze.

DATUM: NAD83(CORS96) (EPOCH:2002.0000)
STATE PLANE COORDINATES: Oregon North Zone in International Feet

Latitude	Longitude	Northing(y)	Easting(x)
45°43'01.33931" North	118°05'40.02387" West	756669.565	8816438.652

AP-734
North Fork Umatilla Wilderness

History of original corner establishment:

1996, David A. Schlaich, Land Surveyor Umatilla National Forest, while surveying the boundary of the North Fork Umatilla Wilderness established the corner as follows:

Set on the crest of a ridge 100 feet northerly of and perpendicular to the centerline of road 3100-287, a 5/8" by 36" rebar, with 3 1/4" aluminum cap, flush with the ground, from which:
15" Englemann Spruce bears N. 53° E., 30.9 feet scribed WB/734° BT.
21" Western Larch bears N. 58 1/2° W., 23.6 feet scribed WB/734° BT.
Shamrock Spring bears N. 73 3/4° W., 160.7 feet.
The bearing trees are double blazed and have a 3/4" diameter brass washer stamped "RLS 2308" nailed to the lower blaze near the "BT" scribing.

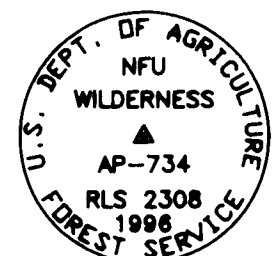
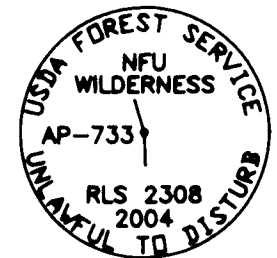
Description of corner evidence found:

Found a 3 1/4" diameter aluminum cap, set flush with the ground, marked as shown, from which:
17" Englemann Spruce bears N. 53° E., 30.9 feet scribing WB/734° BT visible on partially healed double blaze and 3/4" brass washer "RLS 2308" nailed to the lower blaze.
22" Western Larch bears N. 59° W., 23.6 feet scribing WB/734° BT visible on partially healed double blaze.

Description of monument and accessories I established to perpetuate the original location of this corner:

DATUM: NAD83(CORS96) (EPOCH:2002.0000)
STATE PLANE COORDINATES: Oregon North Zone in International Feet

Latitude	Longitude	Northing(y)	Easting(x)
45°42'59.40883" North	118°05'39.90268" West	756474.377	8816453.067



REGISTERED
PROFESSIONAL
LAND SURVEYOR

David A. Schlaich
OREGON
JULY 16, 1987
DAVID A. SCHLAICH
2308

RENEWAL DATE: 06/30/2006