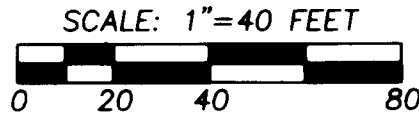
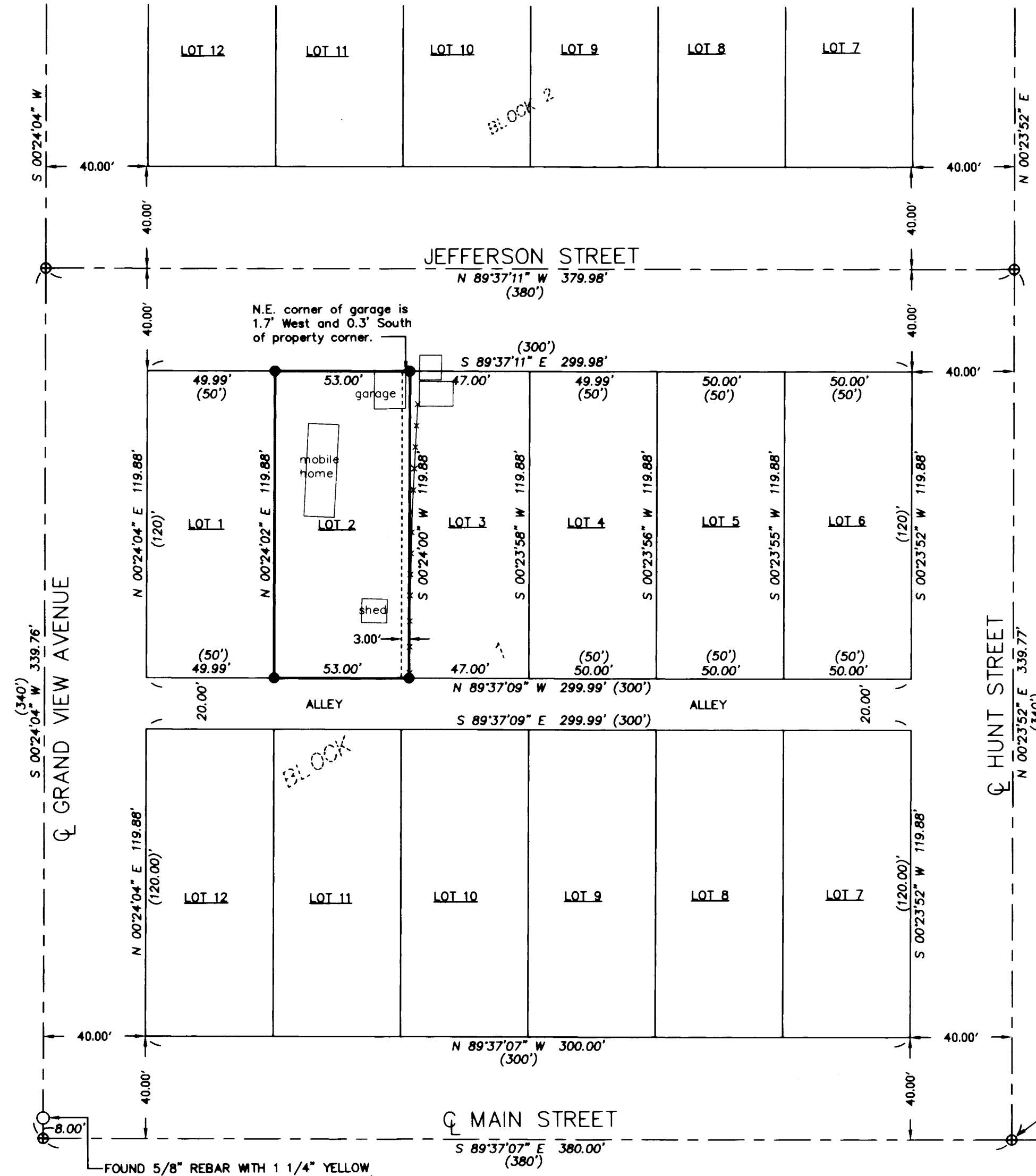


# RECORD OF SURVEY



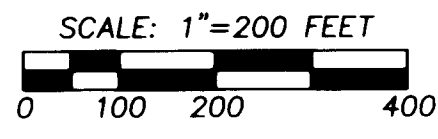
BASIS OF BEARINGS: BEARINGS ARE BASED ON THE LINE BETWEEN THE MONUMENT AT THE WEST 1/4 CORNER OF SECTION 19 AND THE STONE WITH "X" AT THE 1/16TH CORNER BETWEEN SECTIONS 19 AND 24 BEING N 00°24'04" E, PER SURVEY NO. 00-015-C.



FOUND 5/8" REBAR WITH 1 1/4" YELLOW PLASTIC CAP MONUMENTING THE WEST 1/4 CORNER OF SECTION 19, PER SURVEY NO. 95-159-B. THE CENTERLINE OF MAIN STREET BEARS S 00°24'04" W., 8.00' FROM SAID MONUMENT.

FOUND STONE WITH "X" MONUMENTING THE 1/16TH CORNER BETWEEN SECTIONS 19 AND 24. SHOWN ON SURVEY NO. 95-159-B. LOCATED THE CENTERLINE OF GRAND VIEW AVENUE AND COLLEGE STREET N 00°24'04" E., 17.00' FROM STONE, PER SURVEY NO. 97-184-B AND AS INDICATED ON RECORD PLATS.

FOUND PUNCHED RAILROAD SPIKE AT INTERSECTION OF HUNT AND COLLEGE STREETS, PER SURVEY NO. 97-184-B. ALSO FOUND RAILROAD SPIKE FOR CENTERLINE OF HUNT STREET EXTENDING NORTH, BEARS N 89°43'34" W., 10.00'.



SURVEY CONTROL DIAGRAM

INTERSECTION OF CENTERLINES OF GRAND VIEW AVENUE AND MAIN STREET. CALCULATED INTERSECTION S 00°24'04" W., 8.00' FROM CAPPED REBAR MONUMENT FOUND FOR THE WEST 1/4 CORNER OF SECTION 19, PER SURVEY NO. 97-184-B.

FOUND RAILROAD SPIKE AT INTERSECTION OF MAIN STREET AND SECOND STREET. SEE SURVEY NO. G-13-A.

### LEGEND

- - SET 5/8" BY 24" REBAR WITH A 1 1/4" YELLOW PLASTIC CAP MARKED "OR PLS 1106, WA PLS 17372".
- - FOUND MONUMENT AS NOTED.
- ⊕ - CALCULATED POINT, NOT SET OR FOUND.
- (XOX) - RECORD DIMENSION FROM RECORDED PLAT.
- (XOX)R1 - RECORD DIMENSION FROM SURVEY NO. 00-015-C.
- - EXISTING FENCELINE.

NOTE: RECORD DIMENSIONS FOR LOTS IN THE PLAT OF C.A. ROSE'S ADDITION TO THE TOWN OF CENTERVILLE ARE 50 FEET BY 120 FEET.

### NARRATIVE

THIS SURVEY WAS MADE AT THE REQUEST OF PATTI DUNN TO MONUMENT THE OVERALL BOUNDARY OF LOT 2 AND THE WEST 3 FEET OF LOT 3, C.A. ROSE'S ADDITION.

MONUMENTS HELD FOR CONTROL ARE SHOWN. BLOCKS AND LOTS WITHIN C.A. ROSE'S ADDITION WERE PROPORTIONED AS SHOWN.

THIS SURVEY WAS MADE WITH A 2 PERSON CREW USING A SOKKIA SET 48 FIVE SECOND TOTAL STATION BY A COMBINATION OF CLOSED TRAVERSES AND RADIAL TIES. MONUMENTS WERE ESTABLISHED BY RADIAL METHODS AND VERIFIED BY SEPARATE OBSERVATIONS FROM DIFFERENT BACKSIGHTS.

RAILROAD SPIKE CALLED ON SURVEY NO. 97-184-B WAS NOT FOUND. CALCULATED POSITION PER SURVEY NO. 97-184-B.

FOUND RAILROAD SPIKE AT INTERSECTION OF MAIN STREET AND SECOND STREET. SEE SURVEY NO. G-13-A.

REGISTERED PROFESSIONAL LAND SURVEYOR

*William R. Wells*

OREGON  
JULY 22, 1977  
WILLIAM R. WELLS  
1106  
RENEWS 6/30/04

WILLIAM R. WELLS, PLS  
2602 N.E. RIVERSIDE PLACE  
P.O. BOX 1696  
PENDLETON, OR 97801  
PHONE: (541) 276-6362

DATE: 1/04 DR. BY: DMT  
CK. BY: WRW NO: 04-909

PROJECT:

SURVEY FOR:  
PATTI DUNN

LOT 2 AND THE WEST 3 FEET OF LOT 3, BLOCK 1, C.A. ROSE'S ADDITION TO THE TOWN OF CENTERVILLE, NOW ATHENA, SITUATED IN THE SW 1/4 NW 1/4 SECTION 19, TOWNSHIP 4 NORTH, RANGE 35 EAST, W.M., UMATILLA COUNTY, OREGON.

RECEIVED BY  
Umatilla County Surveyor  
Date 2-04  
Rec'd by KK  
No. 04-13-B