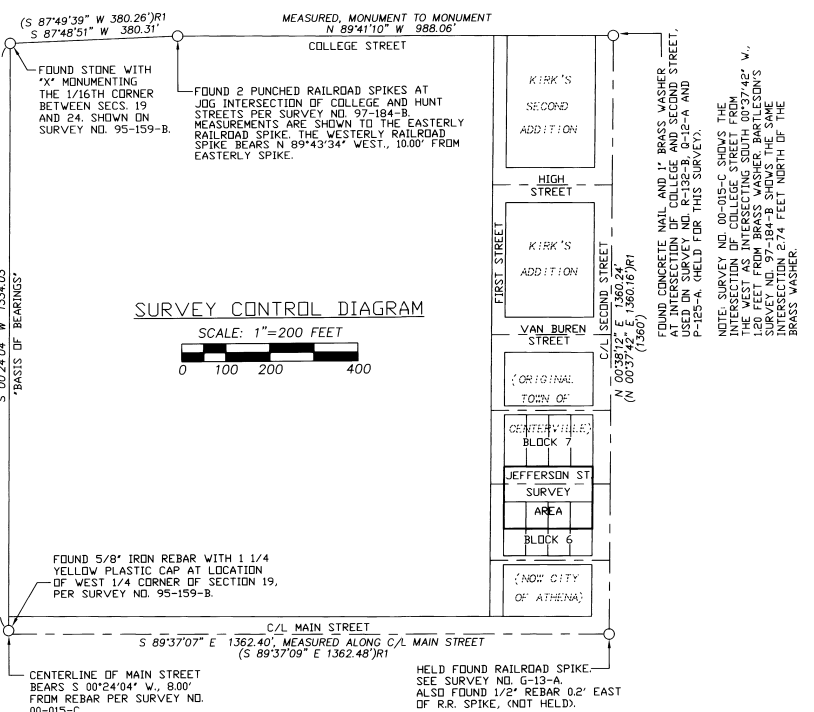
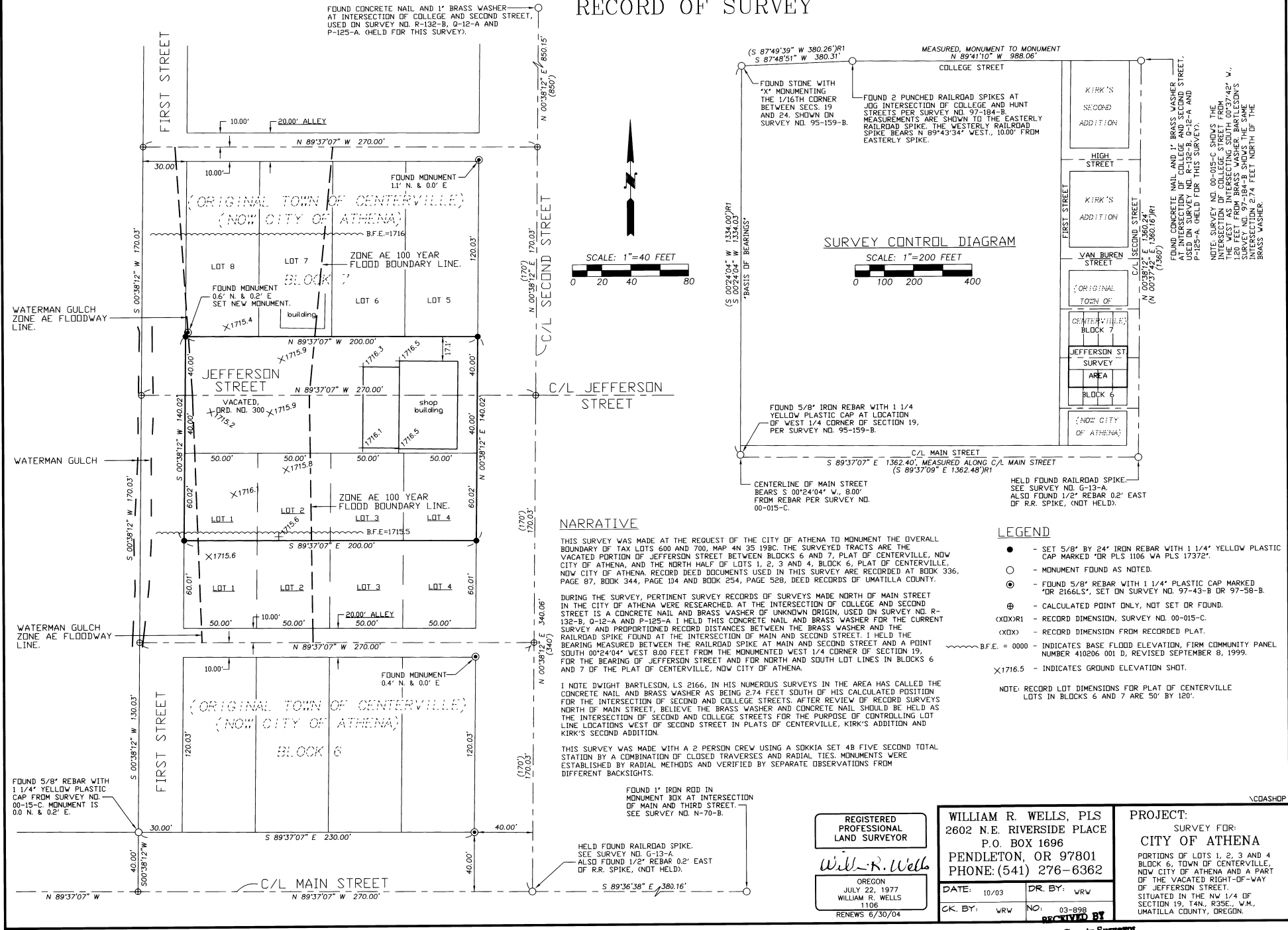


RECORD OF SURVEY



NARRATIVE

THIS SURVEY WAS MADE AT THE REQUEST OF THE CITY OF ATHENA TO MONUMENT THE OVERALL BOUNDARY OF TAX LOTS 600 AND 700, MAP 4N 35 19BC. THE SURVEYED TRACTS ARE THE VACATED PORTION OF JEFFERSON STREET BETWEEN BLOCKS 6 AND 7, PLAT OF CENTERVILLE, NOW CITY OF ATHENA, AND THE NORTH HALF OF LOTS 1, 2, 3 AND 4, BLOCK 6, PLAT OF CENTERVILLE, NOW CITY OF ATHENA. RECORD DEED DOCUMENTS USED IN THIS SURVEY ARE RECORDED AT BOOK 336, PAGE 87, BOOK 344, PAGE 104 AND BOOK 254, PAGE 528, DEED RECORDS OF UMATILLA COUNTY.

DURING THE SURVEY, PERTINENT SURVEY RECORDS OF SURVEYS MADE NORTH OF MAIN STREET IN THE CITY OF ATHENA WERE RESEARCHED. AT THE INTERSECTION OF COLLEGE AND SECOND STREET IS A CONCRETE NAIL AND BRASS WASHER OF UNKNOWN ORIGIN, USED ON SURVEY NO. R-132-B, 0-12-A AND P-125-A. I HELD THIS CONCRETE NAIL AND BRASS WASHER FOR THE CURRENT SURVEY AND PROPORTIONED RECORD DISTANCES BETWEEN THE BRASS WASHER AND THE RAILROAD SPIKE FOUND AT THE INTERSECTION OF MAIN AND SECOND STREET. I HELD THE BEARING MEASURED BETWEEN THE RAILROAD SPIKE AT MAIN AND SECOND STREET AND A POINT SOUTH 00°24'04" WEST 800 FEET FROM THE MONUMENTED WEST 1/4 CORNER OF SECTION 19, FOR THE BEARING OF JEFFERSON STREET AND FOR NORTH AND SOUTH LOT LINES IN BLOCKS 6 AND 7 OF THE PLAT OF CENTERVILLE, NOW CITY OF ATHENA.

I NOTE DWIGHT BARTLESON, LS 2166, IN HIS NUMEROUS SURVEYS IN THE AREA HAS CALLED THE STATION BY A COMBINATION OF CLOSED TRAVERSES AND RADIAL TIES. MONUMENTS WERE ESTABLISHED BY RADIAL METHODS AND VERIFIED BY SEPARATE OBSERVATIONS FROM DIFFERENT BACKSIGHTS.

THIS SURVEY WAS MADE WITH A 2 PERSON CREW USING A SOKKIA SET 48 FIVE SECOND TOTAL STATION BY A COMBINATION OF CLOSED TRAVERSES AND RADIAL TIES. MONUMENTS WERE ESTABLISHED BY RADIAL METHODS AND VERIFIED BY SEPARATE OBSERVATIONS FROM DIFFERENT BACKSIGHTS.

LEGEND

- - SET 5/8" BY 24" IRON REBAR WITH 1 1/4" YELLOW PLASTIC CAP MARKED "OR PLS 1106 VA PLS 17372".
 - - MONUMENT FOUND AS NOTED.
 - ⊙ - FOUND 5/8" REBAR WITH 1 1/4" PLASTIC CAP MARKED "OR 2166LS", SET ON SURVEY NO. 97-43-B OR 97-58-B.
 - ⊕ - CALCULATED POINT ONLY, NOT SET OR FOUND.
 - (XX)R1 - RECORD DIMENSION, SURVEY NO. 00-015-C.
 - (XX)R2 - RECORD DIMENSION FROM RECORDED PLAT.
 - ~~~~~ B.F.E. = 0000 - INDICATES BASE FLOOD ELEVATION, FIRM COMMUNITY PANEL NUMBER 410206 001 D, REVISED SEPTEMBER 8, 1999.
 - ×1716.5 - INDICATES GROUND ELEVATION SHOT.
- NOTE: RECORD LOT DIMENSIONS FOR PLAT OF CENTERVILLE LOTS IN BLOCKS 6 AND 7 ARE 50' BY 120'.

REGISTERED PROFESSIONAL LAND SURVEYOR
William R. Wells
OREGON
JULY 22, 1977
WILLIAM R. WELLS
1106
RENEWS 6/30/04

WILLIAM R. WELLS, PLS
2602 N.E. RIVERSIDE PLACE
P.O. BOX 1696
PENDLETON, OR 97801
PHONE: (541) 276-6362

DATE: 10/03 DR. BY: WRW
CK. BY: WRW NO: 03-898
RECEIVED BY

PROJECT:
SURVEY FOR:
CITY OF ATHENA
PORTIONS OF LOTS 1, 2, 3 AND 4
BLOCK 6, TOWN OF CENTERVILLE,
NOW CITY OF ATHENA AND A PART
OF THE VACATED RIGHT-OF-WAY
OF JEFFERSON STREET.
SITUATED IN THE NW 1/4 OF
SECTION 19, T4N, R33E, W4M,
UMATILLA COUNTY, OREGON.

Umatilla County Surveyor
Date: 10-03
Rec'd By: KR
10-2010-R