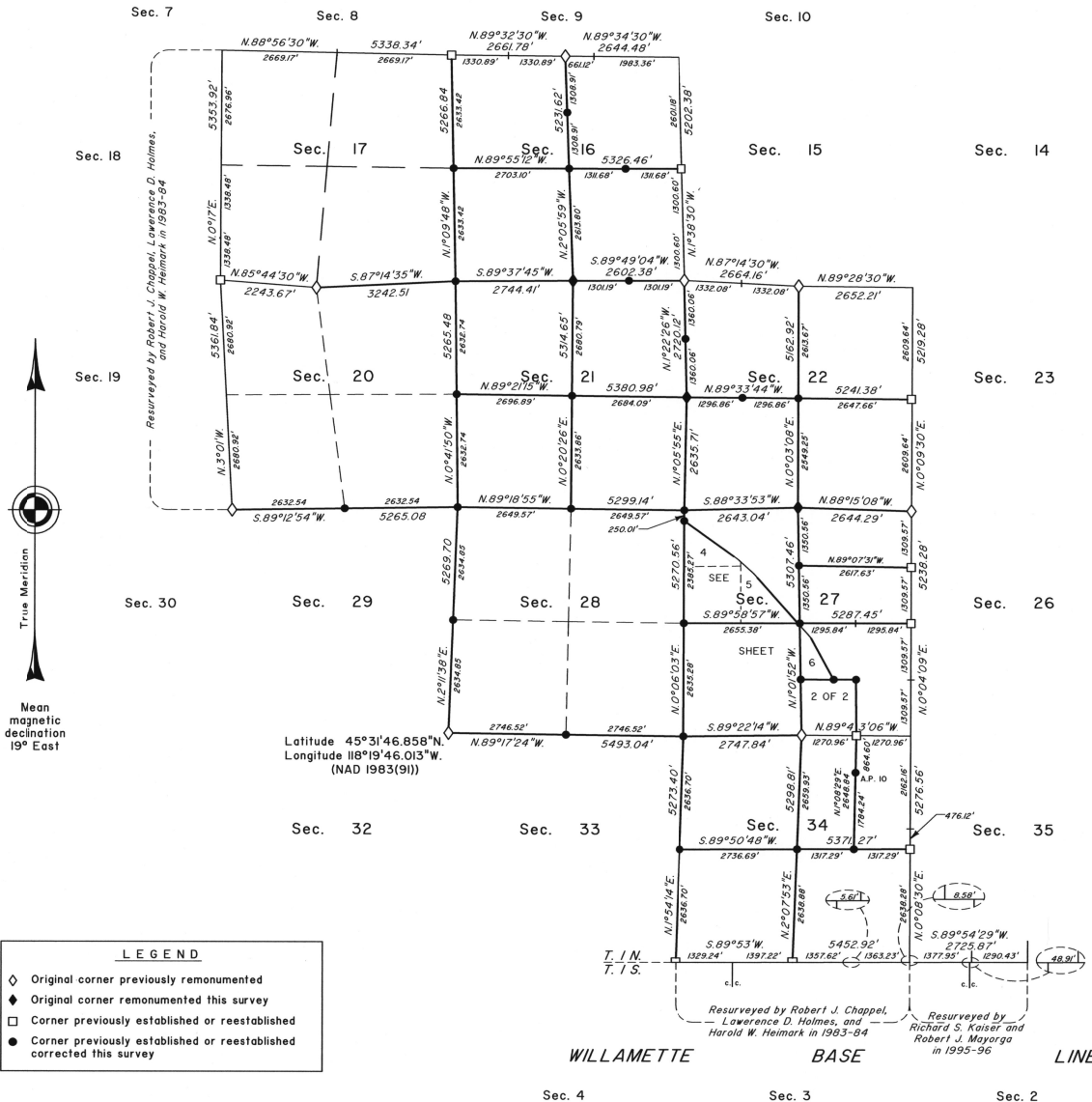


# TOWNSHIP 1 NORTH, RANGE 36 EAST, OF THE WILLAMETTE MERIDIAN, OREGON

SHEET 1 OF 2

## CORRECTIVE DEPENDENT RESURVEY AND CORRECTIVE SURVEY



A history of surveys is contained in the field notes.

This plat represents a corrective dependent resurvey of a portion of the subdivision lines, T. 1 N., R. 36 E., Willamette Meridian, Oregon, designed to restore the corners in their true original locations according to the best available evidence, the corrective survey of the subdivision of sections 16, 21, 22, 27, and 34, and the corrective survey of a portion of the westerly right-of-way of the Union Pacific Railroad in section 27.

The distances and directions shown on this plat were calculated in Cadastral Measurement Management for Windows (WinCMM), computer software that incorporates a least squares adjustment routine, using the survey information from the official plats accepted March 17, 2000, and field ties made to the following found original corners: 1/4 section corner of sections 16 and 21, 1/4 section corner of sections 21 and 22, and the 1/4 section corner of sections 22 and 27. The bearings and distances are reported to the nearest second and 0.01 foot.

Except as shown hereon, the lottings and areas are as shown on the plat approved March 31, 1883, and the plat accepted March 17, 2000.

The survey was executed by Richard S. Kaiser, Cadastral Surveyor, beginning April 17, 2001, and completed May 8, 2001, pursuant to Special Instructions dated April 5, 2001, under Group Number 1974, Oregon.

Timber in this area consists of fir, pine and larch.

At the request of the U.S. Forest Service, the true area for each quarter-quarter section is reported for all lands under their jurisdiction. Where the true area is within 5% of the record area, the quarter-quarter section will retain its aliquot part designation even though the area changes. The quarter-quarter section will continue to be divided by legal subdivision. Where the record area changes by more than 5% or the quarter-quarter section is badly distorted, it has been assigned a lot number and may be further divided only by supplemental plat.

**NOTE:**

Unless otherwise noted the lightweight lines were surveyed by Richard S. Kaiser, Philip G. Griffin, and Bryan S. Seibold in 1997-1999.

UNITED STATES DEPARTMENT OF THE INTERIOR  
BUREAU OF LAND MANAGEMENT

Portland, Oregon June 21, 2002

This plat is strictly conformable to the approved field notes, and the survey, having been correctly executed in accordance with the requirements of law and the regulations of this Bureau, is hereby accepted.

For the Director

*Mary J. M. Hentel*

Chief Cadastral Surveyor of Oregon

TOWNSHIP I NORTH, RANGE 36 EAST, OF THE WILLAMETTE MERIDIAN, OREGON  
CORRECTIVE DEPENDENT RESURVEY AND CORRECTIVE SURVEY

SHEET 2 OF 2

LEGAL SUBDIVISION	OFFICIAL AREA
SECTION 16	
NE 1/4 NE 1/4	39.44 Acres
SE 1/4 NE 1/4	39.28 Acres
E 1/2 NW 1/4 NE 1/4	19.76 Acres
NE 1/4 SE 1/4	39.11 Acres
NE 1/4 SW 1/4	40.76 Acres
SE 1/4 SW 1/4	41.07 Acres
SW 1/4 SW 1/4	41.24 Acres
NW 1/4 SW 1/4	40.92 Acres
SE 1/4 NW 1/4	40.49 Acres
SW 1/4 NW 1/4	40.62 Acres
NW 1/4 NW 1/4	40.31 Acres

Sec. 21

Sec. 22

Sec. 23

LEGAL SUBDIVISION	OFFICIAL AREA
SECTION 22	
NE 1/4 NE 1/4	39.72 Acres
SE 1/4 NE 1/4	39.69 Acres
SW 1/4 NE 1/4	39.72 Acres
NW 1/4 NE 1/4	39.75 Acres
NE 1/4 SE 1/4	39.41 Acres
SE 1/4 SE 1/4	39.38 Acres
SW 1/4 SE 1/4	38.92 Acres
NW 1/4 SE 1/4	38.95 Acres
NE 1/4 SW 1/4	38.45 Acres
SE 1/4 SW 1/4	38.80 Acres
SW 1/4 SW 1/4	39.44 Acres
NW 1/4 SW 1/4	39.09 Acres
NE 1/4 NW 1/4	40.05 Acres
SE 1/4 NW 1/4	39.55 Acres

Sec. 28

Sec. 27

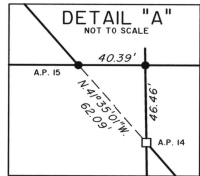
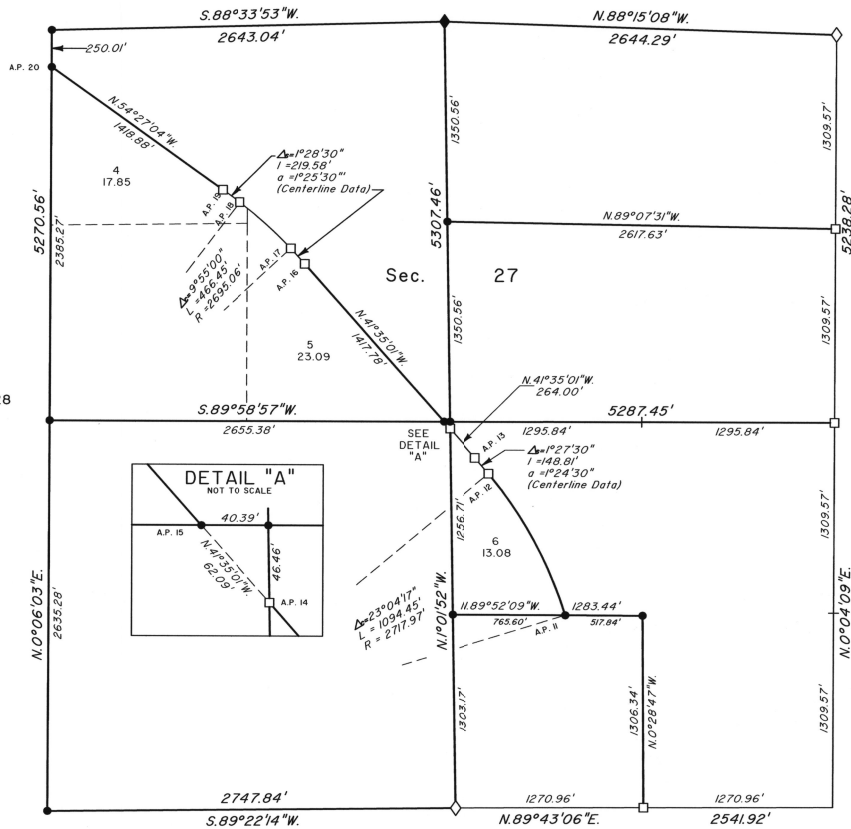
Sec. 26

LEGAL SUBDIVISION	OFFICIAL AREA
SECTION 21	
SE 1/4 NE 1/4	41.42 Acres
SW 1/4 NE 1/4	41.13 Acres
NW 1/4 NE 1/4	40.50 Acres
NE 1/4 SE 1/4	40.46 Acres
SE 1/4 SE 1/4	40.20 Acres
SW 1/4 SE 1/4	40.19 Acres
NW 1/4 SE 1/4	40.45 Acres
NE 1/4 SW 1/4	40.58 Acres
SE 1/4 SW 1/4	40.22 Acres
SW 1/4 SW 1/4	40.21 Acres
NW 1/4 SW 1/4	40.57 Acres
NE 1/4 NW 1/4	41.85 Acres
SE 1/4 NW 1/4	41.49 Acres
SW 1/4 NW 1/4	41.11 Acres
NW 1/4 NW 1/4	41.47 Acres

Sec. 33

Sec. 34

Sec. 35



LEGAL SUBDIVISION	OFFICIAL AREA
SECTION 34	
SW 1/4 NE 1/4	39.76 Acres
NW 1/4 NE 1/4	39.06 Acres
NE 1/4 SE 1/4	40.23 Acres
SE 1/4 SE 1/4	40.93 Acres
SW 1/4 SE 1/4	40.92 Acres
NW 1/4 SE 1/4	40.22 Acres
NE 1/4 SW 1/4	41.37 Acres
SE 1/4 SW 1/4	41.29 Acres
SW 1/4 SW 1/4	41.29 Acres
NW 1/4 SW 1/4	41.36 Acres
NE 1/4 NW 1/4	41.77 Acres
SE 1/4 NW 1/4	41.69 Acres
SW 1/4 NW 1/4	41.51 Acres
NW 1/4 NW 1/4	41.59 Acres

LEGAL SUBDIVISION	OFFICIAL AREA
SECTION 27	
NE 1/4 NE 1/4	39.84 Acres
NW 1/4 NE 1/4	40.45 Acres
SW 1/4 SE 1/4	38.25 Acres
NE 1/4 SW 1/4	40.63 Acres
SE 1/4 SW 1/4	41.02 Acres
SW 1/4 SW 1/4	41.25 Acres
NW 1/4 SW 1/4	40.85 Acres
SW 1/4 NW 1/4	40.82 Acres



NOTE:

The lightweight lines were surveyed by Richard S. Kaiser, Philip G. Griffin, and Bryan S. Seibold in 1997-99.

LEGEND	
◇	Original corner previously remonumented
◆	Original corner remonumented this survey
□	Corner previously established or reestablished
■	Corner previously established or reestablished, corrected this survey

UNITED STATES DEPARTMENT OF THE INTERIOR  
BUREAU OF LAND MANAGEMENT

Portland, Oregon June 21, 2002

This plat is strictly conformable to the approved field notes, and the survey, having been correctly executed in accordance with the requirements of law and the regulations of this Bureau, is hereby accepted.

For the Director

*Mary J. M. Hantel*

Chief Cadastral Surveyor of Oregon

