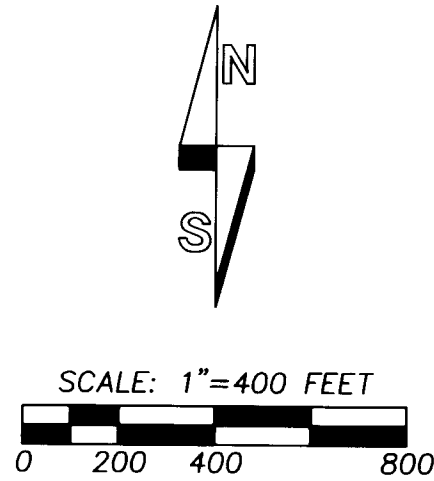
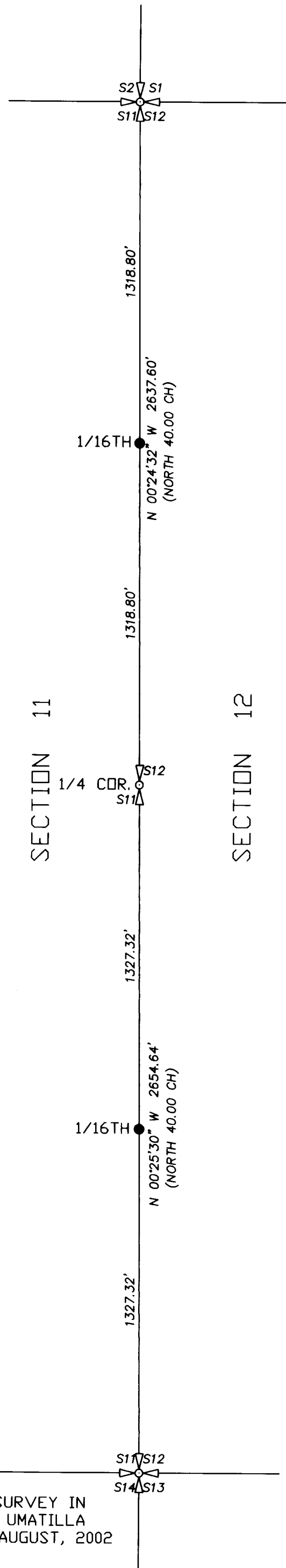


RECORD OF SURVEY

SECTIONS 11 & 12, T5S., R31E., W.M.,
UMATILLA COUNTY, OREGON



BASIS OF BEARINGS: BEARINGS ARE ROTATED TO TRUE NORTH BASED ON G.P.S. GEODETIC OBSERVATION 150 FEET WEST OF THE CENTER 1/4 CORNER OF SECTION 14. THE CENTER 1/4 CORNER OF SECTION 14 IS LOCATED 2630 FEET SOUTH AND 2641 FEET WEST OF THE SOUTHWEST CORNER OF SECTION 12.



LEGEND

- FOUND MONUMENTED PUBLIC LAND SURVEY CORNER, CORNER RECORD FILED PREVIOUSLY. CORNERS ARE MONUMENTED WITH 2 1/2" BRASS CAP ON 1 1/4" GALVANIZED IRON PIPES.
- SET 5/8" BY 30" REBAR WITH 1 1/4" YELLOW PLASTIC CAP MARKED "DR PLS 1106 WA PLS 17372".
- (XOX) - RECORD DIMENSION FROM ORIGINAL GLO SURVEY BY GEORGE S. PERSHIN, U.S. DEPUTY SURVEYOR, UNDER CONTRACT NO. 373 DATED SEPTEMBER 17, 1880.

NARRATIVE

THIS SURVEY WAS MADE AT THE REQUEST OF THE MELVIN AND GLENDA CHRISTIAN TO ESTABLISH THE SOUTH 1/16TH AND NORTH 1/16TH CORNERS ON THE SECTION LINE COMMON TO SECTIONS 11 AND 12.

THE SECTION AND ONE-QUARTER SECTION CORNERS ON THIS LINE HAVE BEEN PREVIOUSLY RECOVERED AND REMONUMENTED, CORNER CERTIFICATES FOR THESE CORNERS ARE FILED SEPARATELY IN THE OFFICE OF THE UMATILLA COUNTY SURVEYOR.

CONTROLLING CORNERS WERE TIED BY STATIC OR REAL TIME KINEMATIC G.P.S. METHODS WITH TRIMBLE 5700 GEODETIC UNITS. THE 1/16TH CORNERS WERE ESTABLISHED BY G.P.S. REAL TIME KINEMATIC METHODS.

SEE ADJACENT SURVEY IN SECTION 14 FOR UMATILLA COUNTY, DATED AUGUST, 2002

CHRISTIANI

REGISTERED
PROFESSIONAL
LAND SURVEYOR

William R. Wells

OREGON
JULY 22, 1977
WILLIAM R. WELLS
1106

RENEWS 6/30/04

WILLIAM R. WELLS, PLS
2602 N.E. RIVERSIDE PLACE
P.O. BOX 1696
PENDLETON, OR 97801
PHONE: (541) 276-6362

DATE: 09/02 DR. BY: WRW
CK BY: WRW NO: 02-823

PROJECT:
SURVEY FOR:
MELVIN & GLENDA CHRISTIAN

LOCATED IN SECTIONS 11 & 12,
T5S., R31E., W.M.,
UMATILLA COUNTY, OREGON

Umatilla County Surveyor

Date 9-02

Rec'd By KE

No. 02-208-B

02-208-B