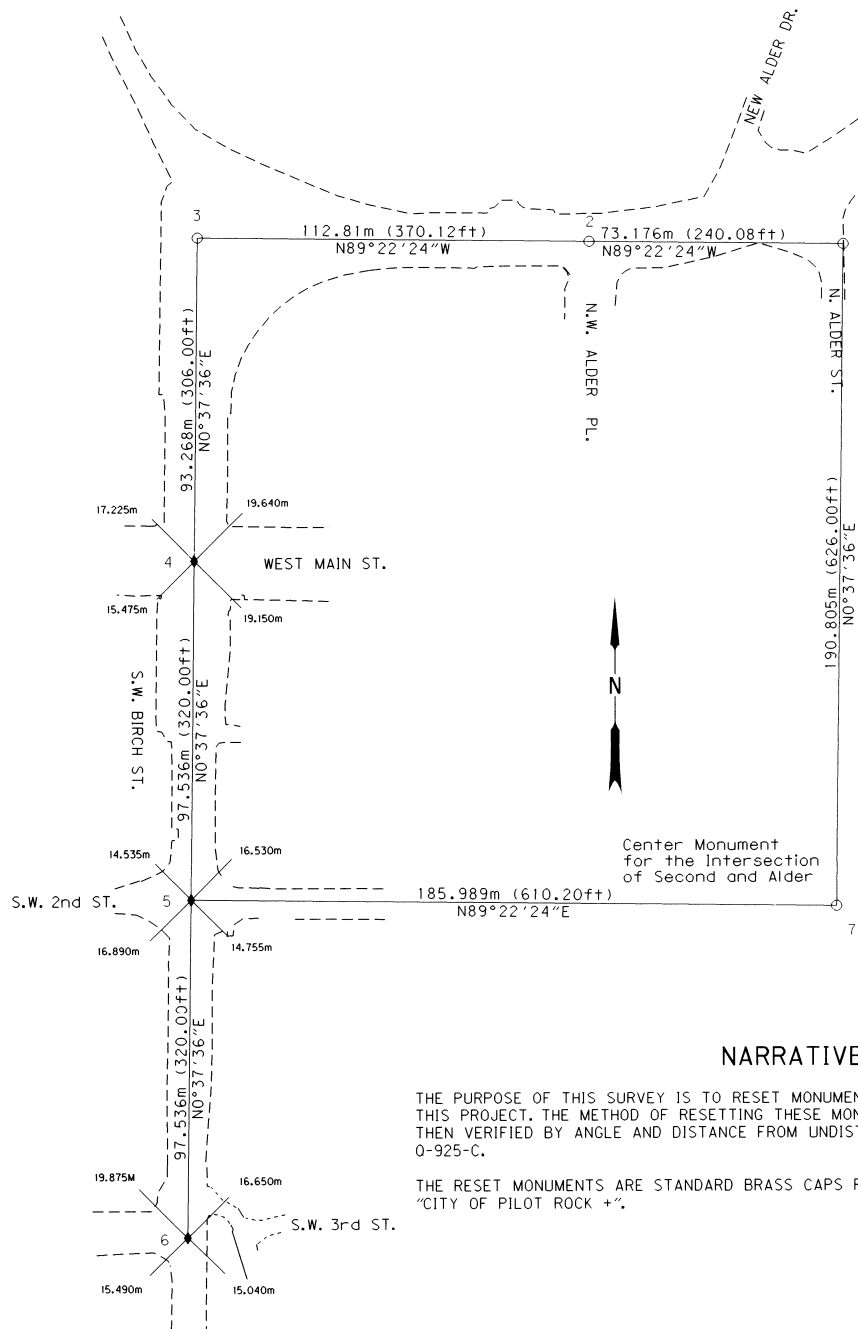


N.W. 1/4 SEC. 16 T.1 S. R.32 E. W. M.



LEGEND	
○	FOUND MONUMENT
◆	RESET BRASS CAP

PT	DESCRIPTION
1	FD 2 IN BRASS DISK SET IN CONCRETE IN MONUMENT BOX, MARKED CITY OF PILOT ROCK, 0-925-C 1979
2	FD 2 IN BRASS DISK SET IN CONCRETE IN MONUMENT BOX, MARKED CITY OF PILOT ROCK, 0-925-C 1979
3	FD 2 IN BRASS DISK SET IN CONCRETE IN MONUMENT BOX, MARKED CITY OF PILOT ROCK, 0-925-C 1979
4	RESET 2 1/2 IN BRASS CAP ON 1 1/2 IN DIA 24 IN IRON PIPE SET IN MONUMENT BOX, MARKED CITY OF PILOT ROCK
5	RESET 2 1/2 IN BRASS CAP ON 1 1/2 IN DIA 24 IN IRON PIPE SET IN MONUMENT BOX, MARKED CITY OF PILOT ROCK
6	RESET 2 1/2 IN BRASS CAP ON 1 1/2 IN DIA 24 IN IRON PIPE SET IN MONUMENT BOX, MARKED CITY OF PILOT ROCK
7	FD 2 IN BRASS DISK SET IN CONCRETE IN MONUMENT BOX, MARKED CITY OF PILOT ROCK, 0-925-C 1979

NARRATIVE

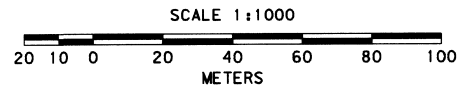
THE PURPOSE OF THIS SURVEY IS TO RESET MONUMENTS DISTURBED DURING THE CONSTRUCTION OF THIS PROJECT. THE METHOD OF RESETTING THESE MONUMENTS WAS SWING TIES AND STRADDLE TIES; THEN VERIFIED BY ANGLE AND DISTANCE FROM UNDISTURBED MONUMENTS AS PER COUNTY SURVEY 0-925-C.

THE RESET MONUMENTS ARE STANDARD BRASS CAPS FURNISHED BY THE COUNTY SURVEYOR STAMPED "CITY OF PILOT ROCK +".

REGISTERED PROFESSIONAL LAND SURVEYOR

K W Eddy
 OREGON
 FEBRUARY 14, 1985
 KEN W. EDDY
 2129

EXPIRES 12/31/03 *12/02*



TO CONVERT METERS TO FEET DIVIDE BY 0.3048

OREGON DEPARTMENT OF TRANSPORTATION

RESET SURVEY MAP

PILOT ROCK RESET SURVEY

HIGHWAY 28

UMATILLA COUNTY

FOR O.D.O.T. REGION 5 80788 KIK RD., HERMISTON, OR 97838

JUNE 5, 2001

SHEET 1 OF 1