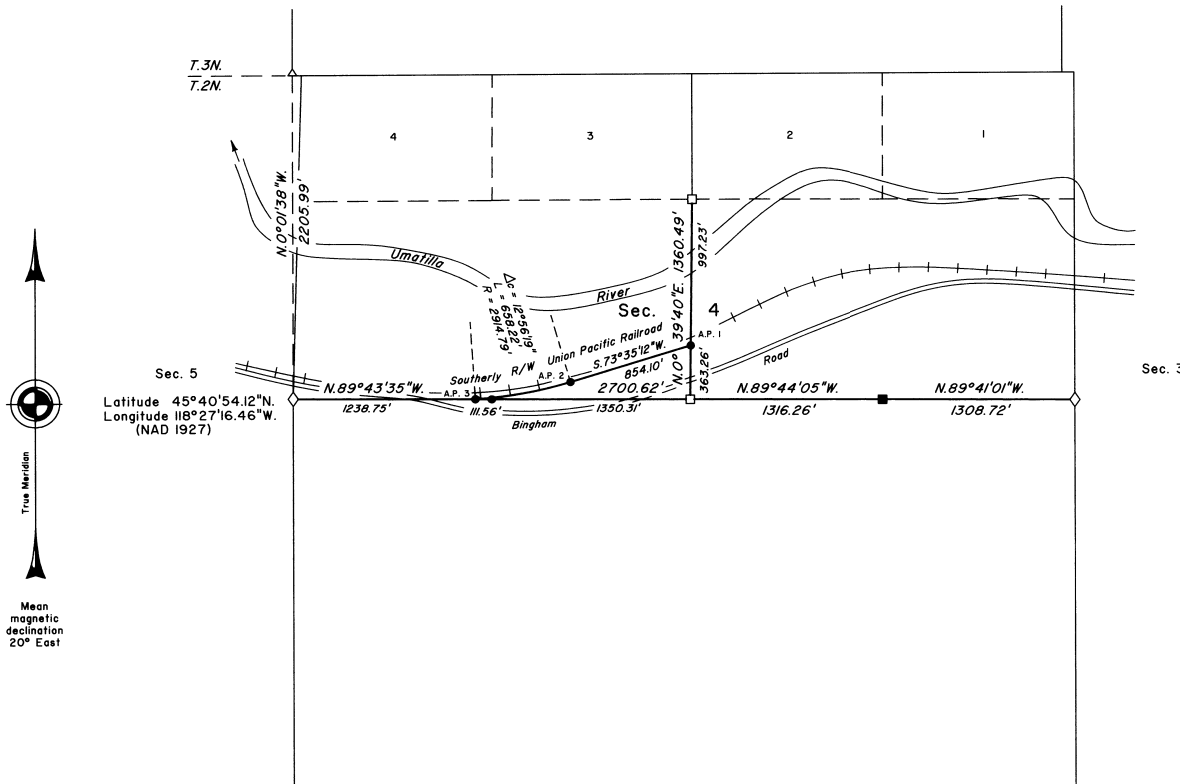


# TOWNSHIP 2 NORTH, RANGE 35 EAST, OF THE WILLAMETTE MERIDIAN, OREGON

## SUBDIVISION OF SECTION 4 AND SURVEY

Sec. 32

Sec. 33



A history of surveys is contained in the field notes.

This plat represents the subdivision of a portion of section 4, and the metes-and-bounds survey of a portion of the southerly right-of-way of the Union Pacific Railroad in section 4, T. 2 N., R. 35 E., Willamette Meridian, Oregon.

Measured distances and directions have been adjusted by Cadastral Measurement Management (CMM), computer software that incorporates a least squares adjustment routine. The adjusted bearings and distances are reported to the nearest second and 0.01 foot.

Except as shown hereon, the lottings and areas are as shown on the plat approved June 14, 1890.

The survey was executed by Bryan S. Seibold, Cadastral Surveyor, beginning May 8, 2000, and completed June 1, 2000, pursuant to Special Instructions dated April 21, 2000, under Group Number 1948, Oregon.

Timber in this area consists of pine and cottonwood.

**NOTE:**

The area of the tract of land between the southerly right-of-way of the Union Pacific Railroad and the center lines of section 4, in the SE 1/4 of the NW 1/4 of section 4, is 5.20 acres.

LEGEND

- ◇ Original corner previously remonumented
- Corner previously established or reestablished
- Corner previously established or reestablished; remonumented this survey
- Corner established or reestablished this survey

UNITED STATES DEPARTMENT OF THE INTERIOR  
BUREAU OF LAND MANAGEMENT

Portland, Oregon September 5, 2000

This plat is strictly conformable to the approved field notes, and the survey, having been correctly executed in accordance with the requirements of law and the regulations of this Bureau, is hereby accepted.

For the Director

Chief Cadastral Surveyor of Oregon

RECEIVED BY  
 Official Survey Register  
 Date 12-00  
 Rec'd by SE  
 No. 00-259-B

