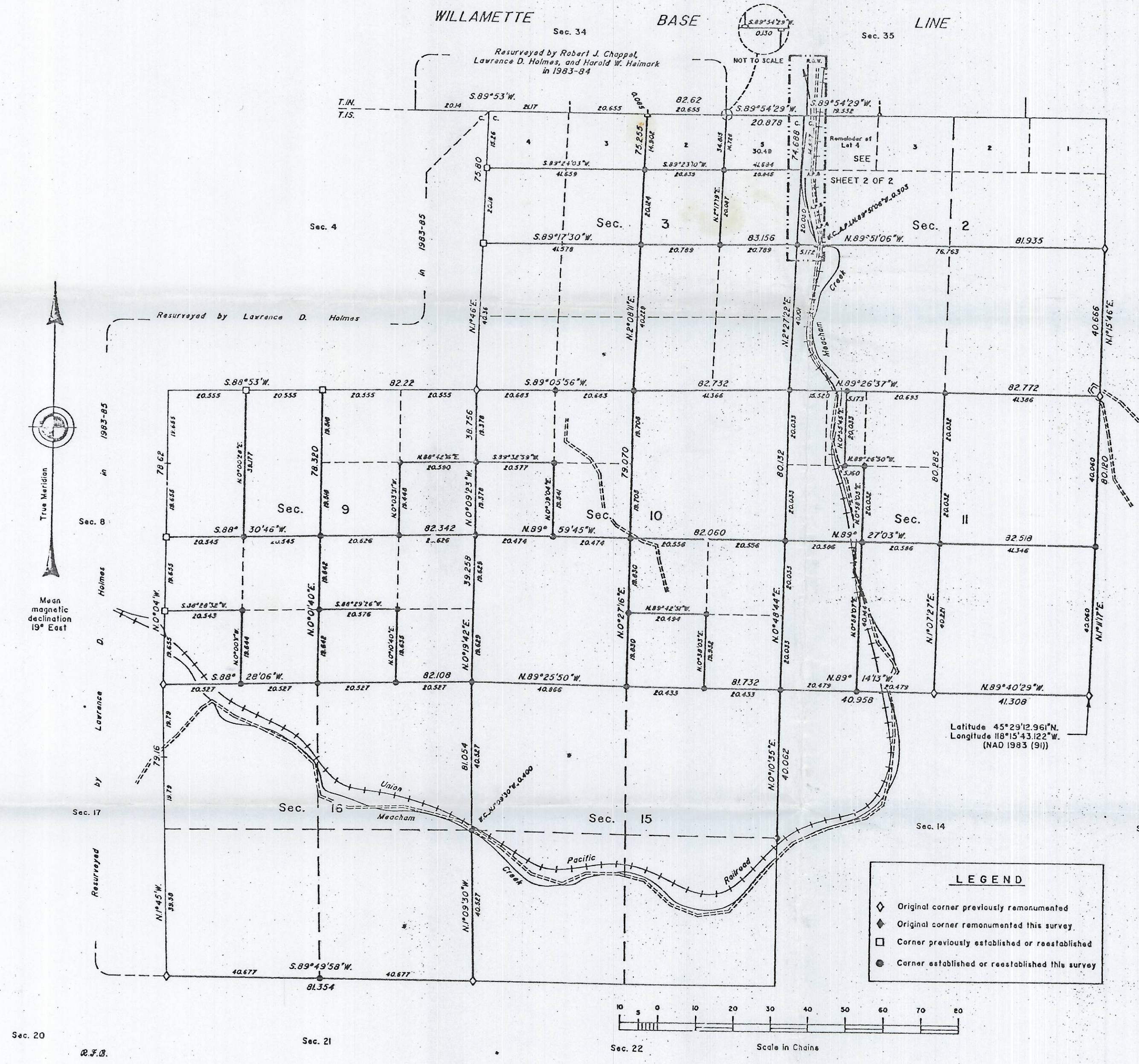


# TOWNSHIP I SOUTH, RANGE 36 EAST, OF THE WILLAMETTE MERIDIAN, OREGON

## CORRECTIVE DEPENDENT RESURVEY AND SURVEY, DEPENDENT RESURVEY, SUBDIVISION OF SECTIONS 2, 9, 10 AND 11, AND SURVEY



A history of surveys is contained in the field notes.

This plat represents a corrective dependant resurvey of a portion of the subdivisional lines, the corrective survey of section 3, the dependent resurvey of a portion of the north boundary (Willamette Base Line) and subdivisional lines, T. I. S., R. 36 E., Willamette Meridian, Oregon, designed to restore the corners in their true original locations according to the best available evidence, the subdivision of sections 2, 9, 10 and 11, and the metes-and-bounds survey of a portion of the westerly right-of-way line of the Union Pacific Railroad in section 2.

Sec. 1. Measured distances and directions have been adjusted by Cadastral Measurement Management (CMM), a computer program that incorporates a least squares adjustment routine. The adjusted bearings and distances are reported to the nearest second and 0.001 chain.

Except as shown hereon, the lottings and areas are as shown on the plat approved March 31, 1883.

The survey was executed by Richard S. Kaiser and Robert J. Mayorga, Cadastral Surveyors, beginning September 6, 1995, and completed July 11, 1996, pursuant to Special Instructions dated August 9, 1995, and Supplemental Special Instructions dated May 10, 1996, under Group Number 1784, Oregon.

Timber in this area consists of Douglas fir, ponderosa pine, alder and western larch.

At the request of the U.S. Forest Service, the true area for each quarter-quarter section is reported for all lands under their jurisdiction. Where the true area is within 5% of the record area, the quarter-quarter section will retain its aliquot part designation even though the area changes. The quarter-quarter section will continue to be divided by legal subdivision. Where the record area changes by more than 5% or the quarter-quarter section is badly distorted, it has been assigned a lot number and may be further divided only by supplemental plat.

UNITED STATES DEPARTMENT OF THE INTERIOR  
BUREAU OF LAND MANAGEMENT

Portland, Oregon June 23, 1998

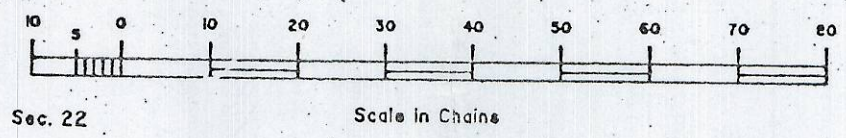
Sec. 13. This plat is strictly conformable to the approved field notes, and the survey, having been correctly executed in accordance with the requirements of law and the regulations of this Bureau, is hereby accepted.

For the Director

*Wayne D. Gardner*  
Chief Cadastral Surveyor of Oregon

**LEGEND**

- ◊ Original corner previously remonumented
- ◈ Original corner remonumented this survey
- Corner previously established or reestablished
- Corner established or reestablished this survey

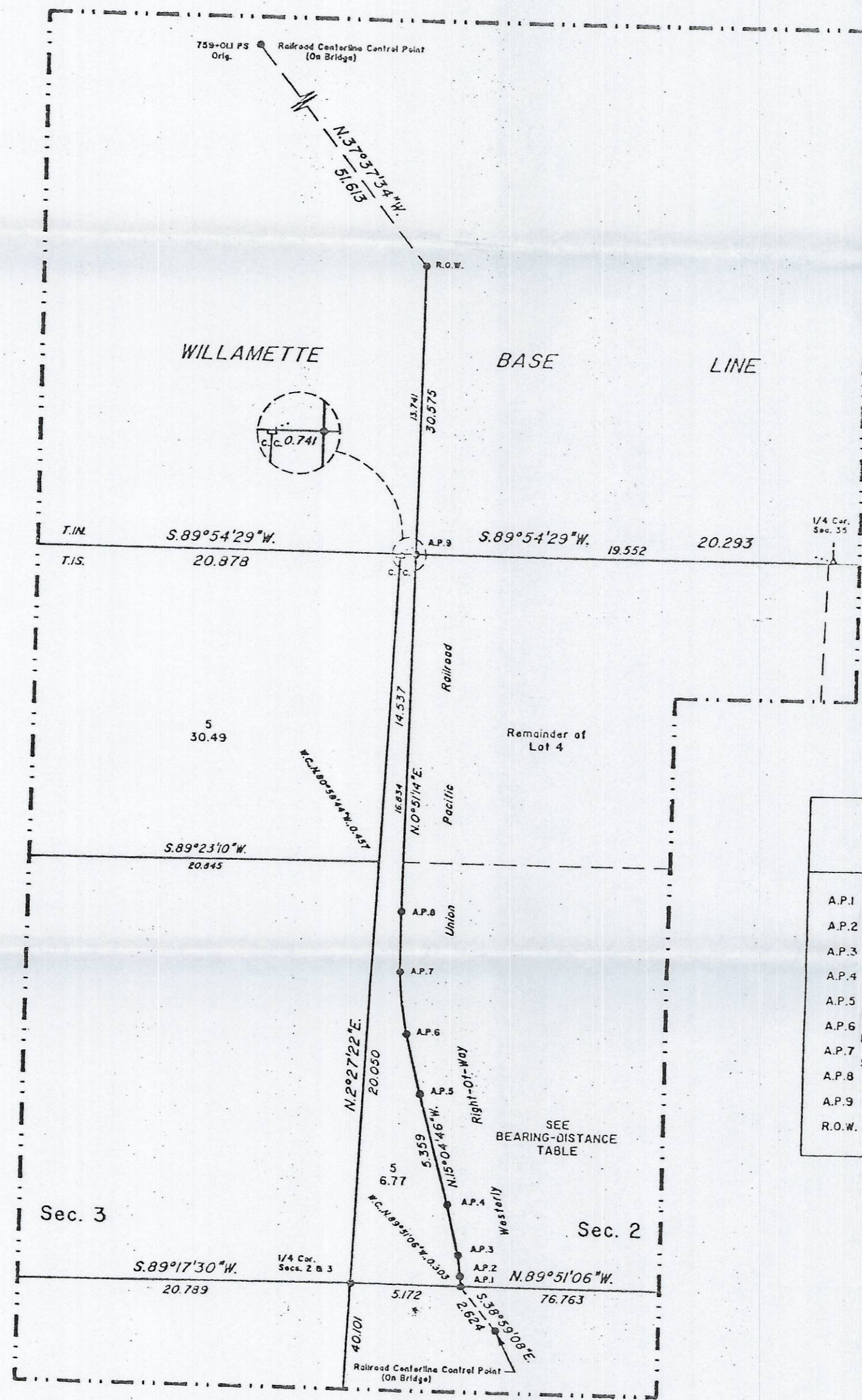


Sec. 20 R.F.B. Sec. 21

RECEIVED BY  
Umatilla County Surveyor  
Date 5-2000  
Rec'd By KX  
No. 00-109-B

TOWNSHIP 1 SOUTH, RANGE 36 EAST, OF THE WILLAMETTE MERIDIAN, OREGON  
DEPENDENT RESURVEY AND SURVEY

SHEET 2 OF 2



LEGAL SUBDIVISION	OFFICIAL AREA
SECTION 3	
SE 1/4 NE 1/4	41.72 Acres
SW 1/4 NE 1/4	41.80 Acres
NE 1/4 SE 1/4	41.60 Acres
SE 1/4 SE 1/4	41.49 Acres
SW 1/4 SE 1/4	41.56 Acres
NW 1/4 SE 1/4	41.67 Acres
NE 1/4 SW 1/4	41.75 Acres
SE 1/4 SW 1/4	41.64 Acres
SW 1/4 SW 1/4	41.73 Acres
NW 1/4 SW 1/4	41.84 Acres
SE 1/4 NW 1/4	41.86 Acres
SW 1/4 NW 1/4	41.93 Acres

LEGAL SUBDIVISION	OFFICIAL AREA
SECTION 9	
SE 1/4 NE 1/4	40.00 Acres
SW 1/4 SE 1/4	40.34 Acres
NE 1/4 SW 1/4	40.33 Acres
SE 1/4 SW 1/4	40.31 Acres
NW 1/4 SW 1/4	40.36 Acres
NE 1/4 NW 1/4	40.18 Acres
SE 1/4 NW 1/4	40.17 Acres

LEGAL SUBDIVISION	OFFICIAL AREA
SECTION 10	
NE 1/4 NE 1/4	41.19 Acres
SE 1/4 NE 1/4	41.07 Acres
SW 1/4 NE 1/4	40.73 Acres
NW 1/4 NE 1/4	40.85 Acres
NE 1/4 SE 1/4	41.01 Acres
SE 1/4 SE 1/4	40.89 Acres
NW 1/4 SE 1/4	40.80 Acres
NE 1/4 NW 1/4	40.48 Acres
SE 1/4 NW 1/4	40.28 Acres
NW 1/4 NW 1/4	40.14 Acres

LEGAL SUBDIVISION	OFFICIAL AREA
SECTION 11	
SW 1/4 SW 1/4	41.12 Acres
NW 1/4 SW 1/4	41.23 Acres
SW 1/4 NW 1/4	41.29 Acres
W 1/2 NW 1/4 NW 1/4 & W 1/2 E 1/2 NW 1/4 NW 1/4	31.05 Acres

BEARING AND DISTANCE TABLE	
Metes-and-Bounds Survey Westery R/W Union Pacific Railroad	
A.P.1	Radius = 7062.2' Δ- 0°15'10" Chord = N.4°27'11"W. 0.472
A.P.2	Radius = 78118' Δ- 4°55'43" Chord = N.7°00'34"W. 1.018
A.P.3	Spiral Segment Chord = N.13°16'15"W. 2.415
A.P.4	N.15°04'46"W. 5.359
A.P.5	Spiral Segment Chord = N.13°43'38"W. 2.917
A.P.6	Radius = 143213' Δ- 7°57'10" Chord = N.7°06'46"W. 3.011
A.P.7	Spiral Segment Chord = N.0°29'54"W. 2.917
A.P.8	N.0°51'14"E. 16.834
A.P.9	N.0°51'14"E. 13.741
R.O.W.	

LEGEND	
◊	Original corner previously remonumented
◆	Original corner remonumented this survey
□	Corner previously established or reestablished
●	Corner established or reestablished this survey

UNITED STATES DEPARTMENT OF THE INTERIOR  
BUREAU OF LAND MANAGEMENT  
Portland, Oregon June 23, 1998

This plat is strictly conformable to the approved field notes, and the survey, having been correctly executed in accordance with the requirements of law and the regulations of this Bureau, is hereby accepted.

For the Director  
*Wayne J. Anderson*  
Chief Cadastral Surveyor of Oregon

RECEIVED BY  
Umatilla County Surveyor  
Date 5-2000  
Rec'd By KR  
No. 00-109-B