

SECTION 33 & 34 T. 4 N., R. 32 E., W.M.  
SECTION 4 T. 3 N., R. 32 E., W.M.

LEGEND	
●	SET 16 mm x 762 mm IRON ROD WITH ALUMINUM CAP, STATE HWY RIGHT OF WAY (S.H.R.W.)
○	FOUND MONUMENT AS NOTED

NARRATIVE

THE PURPOSE OF THIS SURVEY IS TO ESTABLISH HORIZONTAL CONTROL TO RE-ESTABLISH THE ORIGINAL HIGHWAY ALIGNMENT FOR THE REPLACEMENT OF SOUTH FORK COLD SPRINGS (GRANGE HALL) BRIDGE NO. 4739, LOCATED AT 36.96 K.M. ON THE PENDLETON-COLD SPRINGS HIGHWAY. RIGHT OF WAY ACQUIREMENT NECESSARY TO THIS PROJECT WAS DETERMINED FROM THE RE-ESTABLISHED ALIGNMENT BY THESE CONTROL POINTS. THE ORIGINAL ALIGNMENT DATA (STATE HWY. DRG. NO. 4B-7-5 AND SURVEY FILE NO. 93-979-C) WERE CONVERTED TO METRIC AND SURVEY MEASUREMENTS WERE PERFORMED WITH THE METRIC SYSTEM. COORDINATES SHOWN ARE ASSUMED COORDINATES.

THE SURVEY IS LOCATED IN: SECTIONS 33 & 34, T. 4 N., R. 32 E., W.M. AND SECTION 4, T. 3 N., R. 32 E., W.M., UMATILLA COUNTY, OREGON.

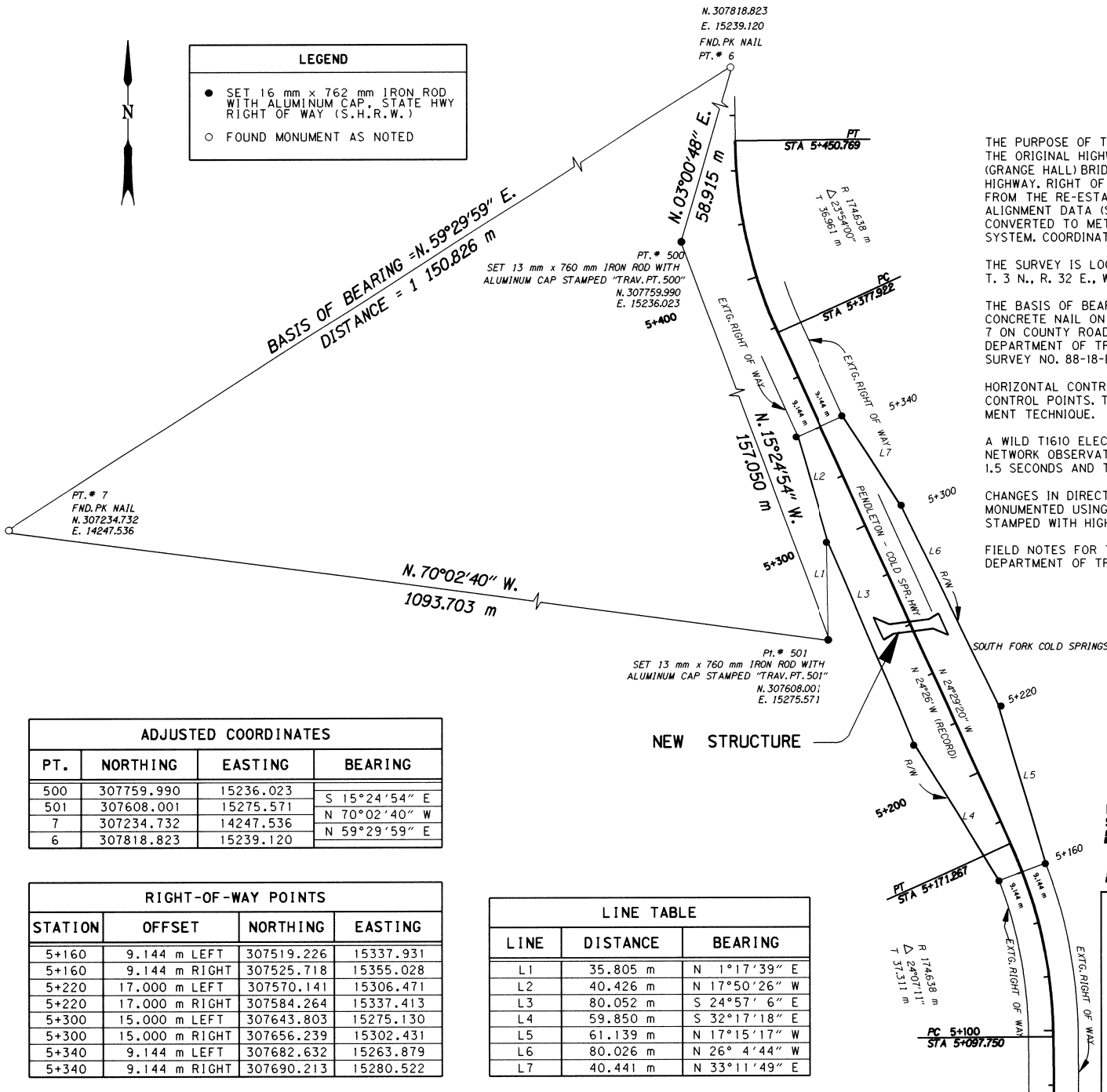
THE BASIS OF BEARING FOR THE SURVEY WAS ESTABLISHED FROM FOUND POINT NO. 6, A CONCRETE NAIL ON PENDLETON-COLD SPRINGS HIGHWAY AND A CONCRETE NAIL, POINT NO. 7 ON COUNTY ROAD NO. 850 AS ESTABLISHED IN SURVEY NO. 93-079-C FILED BY OREGON DEPARTMENT OF TRANSPORTATION. SURVEY NO. 93-079-C WAS BASED ON THE PREVIOUS SURVEY NO. 88-18-B FILED BY WILLIAM R. WELLS, P.L.S. ALL BEARINGS SHOWN ARE TRUE.

HORIZONTAL CONTROL FOR THE PROJECT WAS DEVELOPED BY ESTABLISHING A NETWORK OF CONTROL POINTS. THE OBSERVATIONS WERE ADJUSTED USING A LEAST SQUARES ADJUSTMENT TECHNIQUE.

A WILD T1610 ELECTRONIC THEODOLITE AND D11600 DISTOMAT WERE USED TO MAKE THE NETWORK OBSERVATIONS. THE T1610 THEODOLITE HAS A STANDARD ANGULAR ERROR OF +/- 1.5 SECONDS AND THE D11600 HAS A STANDARD DISTANCE ERROR OF +/- 2 PPM.

CHANGES IN DIRECTION OF RIGHT-OF-WAY AND CONTROL POINT REFERENCES WERE MONUMENTED USING CAPPED 16 mm x 762 mm IRON RODS WITH A POST AND PLACARD STAMPED WITH HIGHWAY STATION AND DISTANCE FROM CENTERLINE OF HIGHWAY.

FIELD NOTES FOR THIS SURVEY ARE ON FILE IN BOOK NO. 3188 LOCATED IN THE OREGON DEPARTMENT OF TRANSPORTATION OFFICE IN SALEM, OREGON.



REGISTERED  
PROFESSIONAL  
LAND SURVEYOR

*K. W. Eddy*  
OREGON  
FEBRUARY 14, 1988  
KEN W. EDDY  
2129

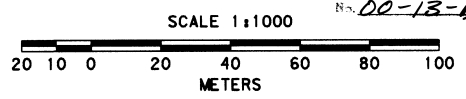
EXPIRES 12/31/01

RECEIVED BY  
Date: 01-2000  
By: KK  
No. 00-13-B

ADJUSTED COORDINATES			
PT.	NORTHING	EASTING	BEARING
500	307759.990	15236.023	
501	307608.001	15275.571	S 15°24'54" E
7	307234.732	14247.536	N 70°02'40" W
6	307818.823	15239.120	N 59°29'59" E

RIGHT-OF-WAY POINTS			
STATION	OFFSET	NORTHING	EASTING
5+160	9.144 m LEFT	307519.226	15337.931
5+160	9.144 m RIGHT	307525.718	15355.028
5+220	17.000 m LEFT	307570.141	15306.471
5+220	17.000 m RIGHT	307584.264	15337.413
5+300	15.000 m LEFT	307643.803	15275.130
5+300	15.000 m RIGHT	307656.239	15302.431
5+340	9.144 m LEFT	307682.632	15263.879
5+340	9.144 m RIGHT	307690.213	15280.522

LINE TABLE		
LINE	DISTANCE	BEARING
L1	35.805 m	N 1°17'39" E
L2	40.426 m	N 17°50'26" W
L3	80.052 m	S 24°57'6" E
L4	59.850 m	S 32°17'18" E
L5	61.139 m	N 17°15'17" W
L6	80.026 m	N 26°4'44" W
L7	40.441 m	N 33°11'49" E



OREGON DEPARTMENT OF TRANSPORTATION  
RIGHT-OF-WAY MONUMENTATION MAP  
SOUTH FORK COLD SPRINGS BRIDGE SECTION  
PENDLETON - COLD SPRINGS HIGHWAY  
UMATILLA COUNTY  
FOR O.D.O.T. REGION 5 80788 KIK RD., HERMISTON, OR 97838  
NOVEMBER 19, 1999 SHEET 1 OF 1