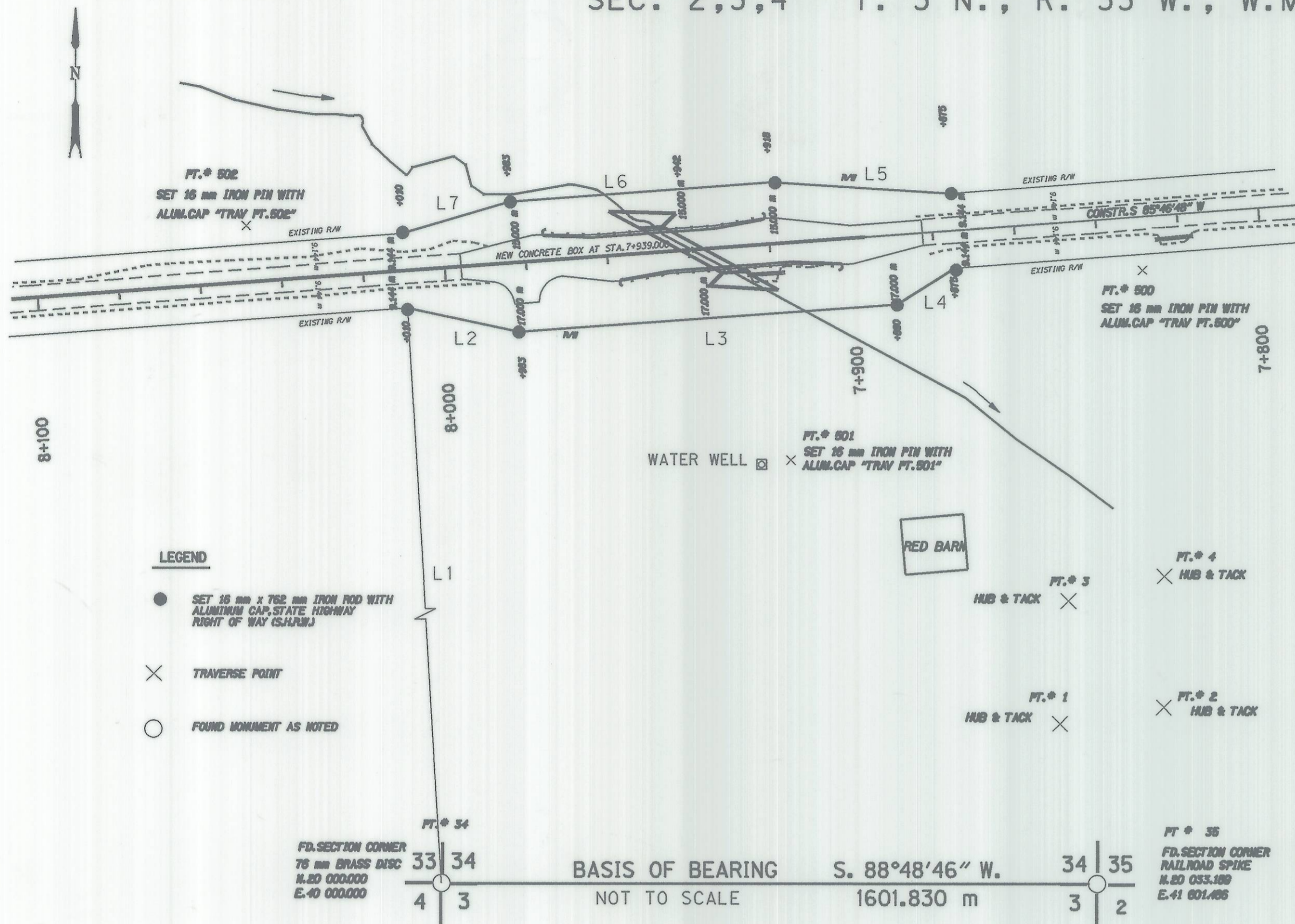
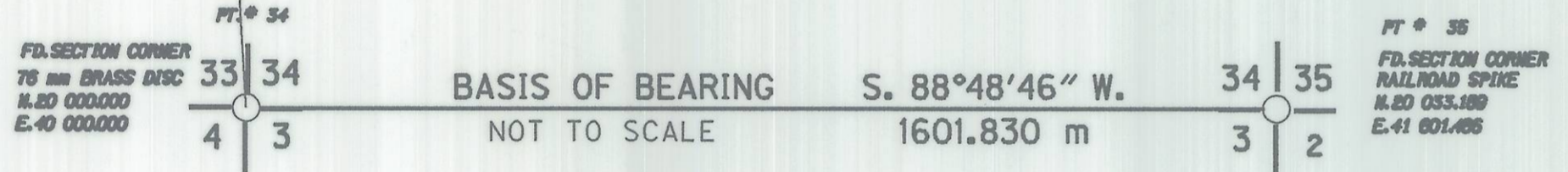


SEC. 22,26,27,33,34,35 T. 4 N., R. 33 W., W.M.
 SEC. 2,3,4 T. 3 N., R. 33 W., W.M.



- LEGEND**
- SET 16 mm x 762 mm IRON ROD WITH ALUMINUM CAP, STATE HIGHWAY RIGHT OF WAY (S.H.R.W.)
 - × TRAVERSE POINT
 - FOUND MONUMENT AS NOTED



NARRATIVE SURVEY

THE PURPOSE OF THIS SURVEY IS TO ESTABLISH HORIZONTAL CONTROL FOR THE REPLACEMENT OF WEST FORK GREASEWOOD CREEK BRIDGE NO. 04783 LOCATED AT KM 12.576 (MILEPOST 7.86 ON THE ATHENA-HOLDMAN STATE HIGHWAY NO. 334, RIGHT-OF-WAY ACQUIREMENT NECESSARY TO THIS PROJECT WAS DETERMINED FROM THE ORIGINAL ALIGNMENT DATA FOUND IN STATE HWY. DRG. NO. 6B-21-10. THE CONTROL POINTS AND SURVEY MEASUREMENTS WERE CONVERTED TO METRIC.

THE SURVEY IS LOCATED IN SECTION 22, 26, 27, 33, 34 35, T. 4 N., R. 33 W. AND SECTION 2, 3, 4, T. 3 N., R. 33 W., W.M., UMATILLA COUNTY, OREGON. METRIC COORDINATES ARE ASSUMED. THE BASIS OF BEARING FOR THE SURVEY WAS ESTABLISHED BY USING FOUND SECTION CORNERS, REFERENCE FILE SURVEY MAP NO. 85-121-A IN THE UMATILLA COUNTY SURVEYOR OFFICE. ALL BEARINGS SHOWN ARE TRUE.

HORIZONTAL CONTROL FOR THE PROJECT WAS DEVELOPED BY ESTABLISHING A NETWORK OF CONTROL POINTS. THE OBSERVATIONS WERE ADJUSTED BY USING A LEAST SQUARES ADJUSTMENT TECHNIQUE.

A WILD T1610 ELECTRONIC THEODOLITE AND DI1600 DISTOMAT WERE USED TO MAKE THE NETWORK OBSERVATIONS. THE T1610 THEODOLITE HAS A STANDARD ANGULAR ERROR OF +/- 1.5 SECONDS AND THE DI1600 HAS A STANDARD DISTANCE ERROR OF +/- 2 PPM.

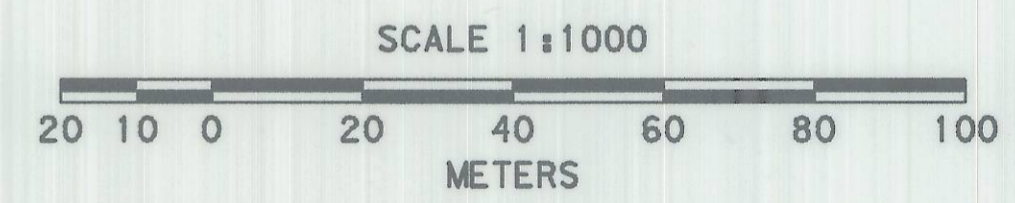
CHANGES IN THE DIRECTION OF RIGHT-OF-WAY AND CONTROL POINT REFERENCES WERE MONUMENTED USING CAPPED 16 mm x 762 mm IRON RODS WITH A POST AND PLACARD STAMPED WITH HIGHWAY STATION AND DISTANCE FROM CENTERLINE OF HIGHWAY.

RECORD WIDTHS HELD UNLESS OTHERWISE NOTED. FIELD NOTES FOR THIS SURVEY ARE ON FILE IN BOOK NO 3571 LOCATED IN THE OREGON DEPARTMENT OF TRANSPORTATION OFFICE IN SALEM, OREGON.

| LINE TABLE | | |
|------------|------------|---------------|
| LINE | DISTANCE | BEARING |
| L1 | 3430.103 m | N 20°56'21" W |
| L2 | 28.120 m | S 78°00'12" E |
| L3 | 93.000 m | N 85°46'49" E |
| L4 | 16.933 m | N 58°08'08" E |
| L5 | 43.892 m | N 87°26'49" E |
| L6 | 64.500 m | S 85°46'49" W |
| L7 | 27.628 m | S 73°32'34" W |

| ADJUSTED COORDINATES | | | |
|----------------------|-----------|-----------|---------------|
| PT. | NORTHING | EASTING | BEARING |
| 1 | 21331.604 | 41507.508 | S 89°57'31" E |
| 2 | 21300.906 | 41532.755 | N.04°08'17" W |
| 3 | 22280.650 | 41461.874 | S 89°46'42" E |
| 4 | 22280.487 | 41504.011 | N 05°45'30" W |
| 500 | 23216.243 | 41409.648 | S 61°59'18" W |
| 501 | 23165.464 | 41314.194 | N53°23'52" W |
| 502 | 23220.855 | 41239.616 | |

REGISTERED PROFESSIONAL LAND SURVEYOR
K. W. Eddy
 OREGON
 FEBRUARY 14, 1985
 KEN W EDDY
 2129
 EXPIRES 12/31/01



| TEMPORARY EASEMENT | | | |
|--------------------|--------------|-----------|-----------|
| STATION | OFFSET | NORTHING | EASTING |
| 7+942.000 | 15.000 m Rt. | 23232.664 | 41291.873 |
| 8+017.000 | 49.000 m Rt. | 23261.053 | 41214.574 |
| 8+028.000 | 38.000 m Rt. | 23249.273 | 41204.414 |
| 8+010.000 | 9.144 m Rt. | 23221.820 | 41224.488 |
| 7+936.000 | 17.000 m Lt. | 23201.192 | 41300.211 |
| 7+873.000 | 55.000 m Lt. | 23167.931 | 41365.837 |
| 7+863.000 | 43.000 m Lt. | 23180.635 | 41374.927 |
| 7+875.000 | 9.144 m Lt. | 23213.516 | 41360.468 |

| RIGHT-OF-WAY POINTS | | | |
|---------------------|--------------|-----------|-----------|
| STATION | OFFSET | NORTHING | EASTING |
| 7+875.000 | 9.144 m Rt. | 23231.754 | 41359.122 |
| 7+918.000 | 15.000 m Rt. | 23234.393 | 41315.309 |
| 7+983.000 | 15.000 m Rt. | 23229.647 | 41250.984 |
| 8+010.000 | 9.144 m Rt. | 23221.820 | 41224.488 |
| 8+010.000 | 9.144 m Lt. | 23203.582 | 41225.834 |
| 7+983.000 | 17.000 m Lt. | 23197.734 | 41253.339 |
| 7+890.000 | 17.000 m Lt. | 23204.577 | 41346.087 |
| 7+875.000 | 9.144 m Lt. | 23213.516 | 41360.468 |

RECEIVED BY
 Umatilla County Surveyor
 Date 01-2000
 Rec'd By KK
 No. 00-008-B

OREGON DEPARTMENT OF TRANSPORTATION
 RIGHT-OF-WAY MONUMENTATION MAP
 W. FK. GREASEWOOD CR. BRIDGE
 ATHENA - HOLDMAN HWY
 UMATILLA COUNTY

FOR O.D.O.T. REGION 5 80788 KIK RD., HERMISTON, OR 97830
 OCTOBER 6, 1999 SHEET 1 OF 1