

RECORD OF SURVEY

DECEMBER, 1998

LEGEND

- - SET 5/8" X 30" IRON PIN WITH A YELLOW PLASTIC CAP MARKED "OR PLS 1106, WA PLS 17312".
- - FOUND PLAT MONUMENT FROM YOUNG'S 2ND ADDITION.
- ⊙ - FOUND PLAT MONUMENT FROM BLAKEY ADDITION.
- ⊕ - CALCULATED POINT ONLY, NOT SET OR FOUND.
- ⊖ - POWER POLE.
- - TELEPHONE PEDISTAL.
- - EXISTING FENCELINE.
- ① - LOT NUMBER, YOUNG'S 2ND ADDITION OR BLAKEY ADDITION.
- (X)X(R)1 - RECORD DIMENSION FROM PARTITION PLAT NO. 1990-01.
- (X)X(R)2 - RECORD DIMENSION FROM BLAKEY ADDITION.

EXISTING EASEMENT NOTES

- Ⓐ - 60 FOOT PRIVATE ROAD EASEMENT CREATED ON PARTITION PLAT NUMBER 1990-01.
- Ⓑ - 20 FOOT PUBLIC SEWER EASEMENT CREATED ON PARTITION PLAT NUMBER 1990-01.
- Ⓒ - 20 FOOT PUBLIC WATER EASEMENT CREATED ON PARTITION PLAT NUMBER 1990-01.
- Ⓓ - 20 FOOT UTILITY EASEMENT TO CITY OF PENDLETON, REEL 151, PAGE 1511, DEED RECORDS.
- Ⓔ - 60 FOOT INGRESS-EGRESS EASEMENT REFERRED TO IN DEED TO UMATILLA COUNTY EDUCATION SERVICE DISTRICT, REEL 142, PAGE 446, DEED RECORDS.
- Ⓕ - EASEMENT FOR ELECTRICAL LINES "ALONG FENCES AND IN SCAB LAND" GRANTED TO UMATILLA ELECTRIC COOPERATIVE ASSOCIATION IN BOOK 260, PAGE 514 DEED RECORDS AND ASSIGNED TO PACIFIC POWER & LIGHT CO. IN BOOK 275, PAGE 158, DEED RECORDS.

NARRATIVE OF SURVEY

THIS SURVEY WAS MADE AT THE REQUEST OF STEVE COREY, REPRESENTING ST. ANTHONY HOSPITAL, TO RECOVER OR REINFORCE THE BOUNDARIES OF PARCEL 2 OF PARTITION PLAT NO. 1990-01. ADDITIONALLY, ENCROACHMENTS WERE OBSERVED AND ARE NOTED.

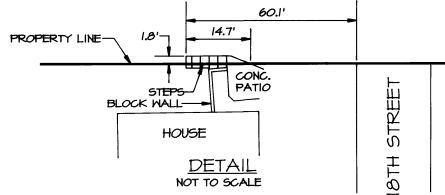
NO MONUMENTS WERE RECOVERED WHICH COULD BE IDENTIFIED AS THOSE ESTABLISHED ON PARTITION PLAT NO. 1990-01. TO RE-ESTABLISH THE BOUNDARIES OF PARCEL 2 OF PARTITION PLAT NO. 1990-01, I HELD THE NORTH LINE OF BLAKEY ADDITION AS DETERMINED BY FOUND PLAT MONUMENTS. I HELD MONUMENTS FOUND ALONG THE EAST LINE OF YOUNG'S 2ND ADDITION FOR THE WEST LINE OF SAID PARCEL 2. I HELD THE RECORD DISTANCE OF 444.56 FEET FROM THE SOUTHWEST CORNER OF SAID PARCEL 2 TO ESTABLISH THE SOUTHEAST CORNER OF PARCEL 2. THE NORTH LINE OF SAID PARCEL 2 WAS CALCULATED FROM THE SOUTHEAST CORNER OF PARCEL 2, BY RECORD BEARING AND DISTANCES AS REPORTED ON PARTITION PLAT NO. 1990-01, TERMINATING AT THE FOUND MONUMENT AT THE NORTHWEST CORNER OF SAID PARCEL 2.

THE SURVEY WAS MADE WITH A 2 PERSON CREW USING A SOKKIA SET 4B AUTOMATIC FIVE SECOND TOTAL STATION. MEASUREMENTS WERE MADE BY A COMBINATION OF RADIAL TIES AND CLOSED TRAVERSES. MONUMENTS WERE ESTABLISHED BY RADIAL METHODS AND VERIFIED BY SEPARATE OBSERVATIONS.

REGISTERED
PROFESSIONAL
LAND SURVEYOR

William R. Wells

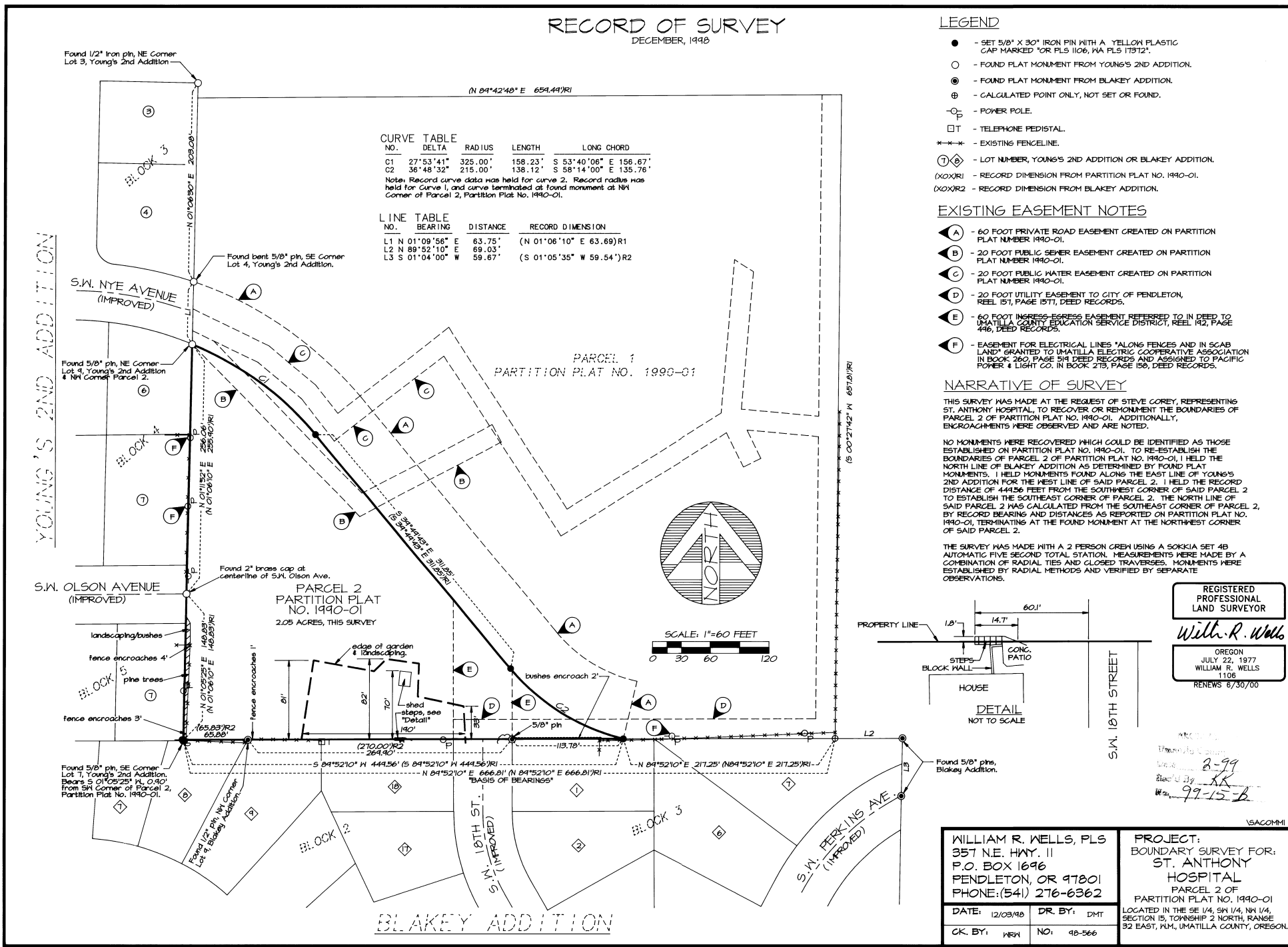
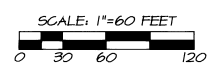
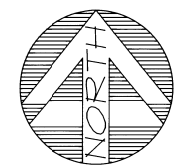
OREGON
JULY 22, 1977
WILLIAM R. WELLS
1108
RENEWS 8/30/00



NO.	DELTA	RADIUS	LENGTH	LONG CHORD
C1	27°53'41"	325.00'	158.23'	S 53°40'06" E 156.67'
C2	36°48'32"	215.00'	138.12'	S 58°14'00" E 135.76'

Note: Record curve data was held for curve 2. Record radius was held for Curve 1, and curve terminated at found monument at NW Corner of Parcel 2, Partition Plat No. 1990-01.

NO.	BEARING	DISTANCE	RECORD DIMENSION
L1	01°09'58" E	63.75'	(N 01°06'10" E 63.69')R1
L2	N 89°52'10" E	69.03'	
L3	01°04'00" W	59.67'	(S 01°05'35" W 59.54')R2



WILLIAM R. WELLS, PLS
357 N.E. HWY. 11
P.O. BOX 1696
PENDLETON, OR 97801
PHONE: (541) 276-6362

PROJECT:
BOUNDARY SURVEY FOR:
ST. ANTHONY
HOSPITAL
PARCEL 2 OF
PARTITION PLAT NO. 1990-01
LOCATED IN THE SE 1/4, SW 1/4, NW 1/4,
SECTION 15, TOWNSHIP 2 NORTH, RANGE
32 EAST, NM, UMATILLA COUNTY, OREGON.

DATE: 12/03/98 DR. BY: DMT
CK. BY: KRM NO: 98-566

VSACOMMI