

RECORD OF SURVEY
SITUATED IN THE S.W. 1/4,
SECTION 29 AND S.E. 1/4 SECTION 30,
T. 4 N., R. 29 E., W.M.
UMATILLA COUNTY, OREGON
 DECEMBER 4, 1997

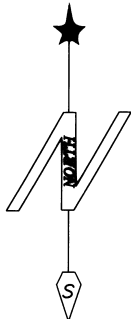
SURVEYED BY:
TOM NELSON & ASSOCIATES
 4120 SE INTERNATIONAL WAY, SUITE A-108
 MILWAUKIE, OREGON 97222
 PHONE: 503/652-1852

SURVEYED FOR:
PACIFIC GAS & TRANSMISSION
 224 SW FIRST AVENUE
 PORTLAND, OREGON 97204
 PHONE: 503/243-3261

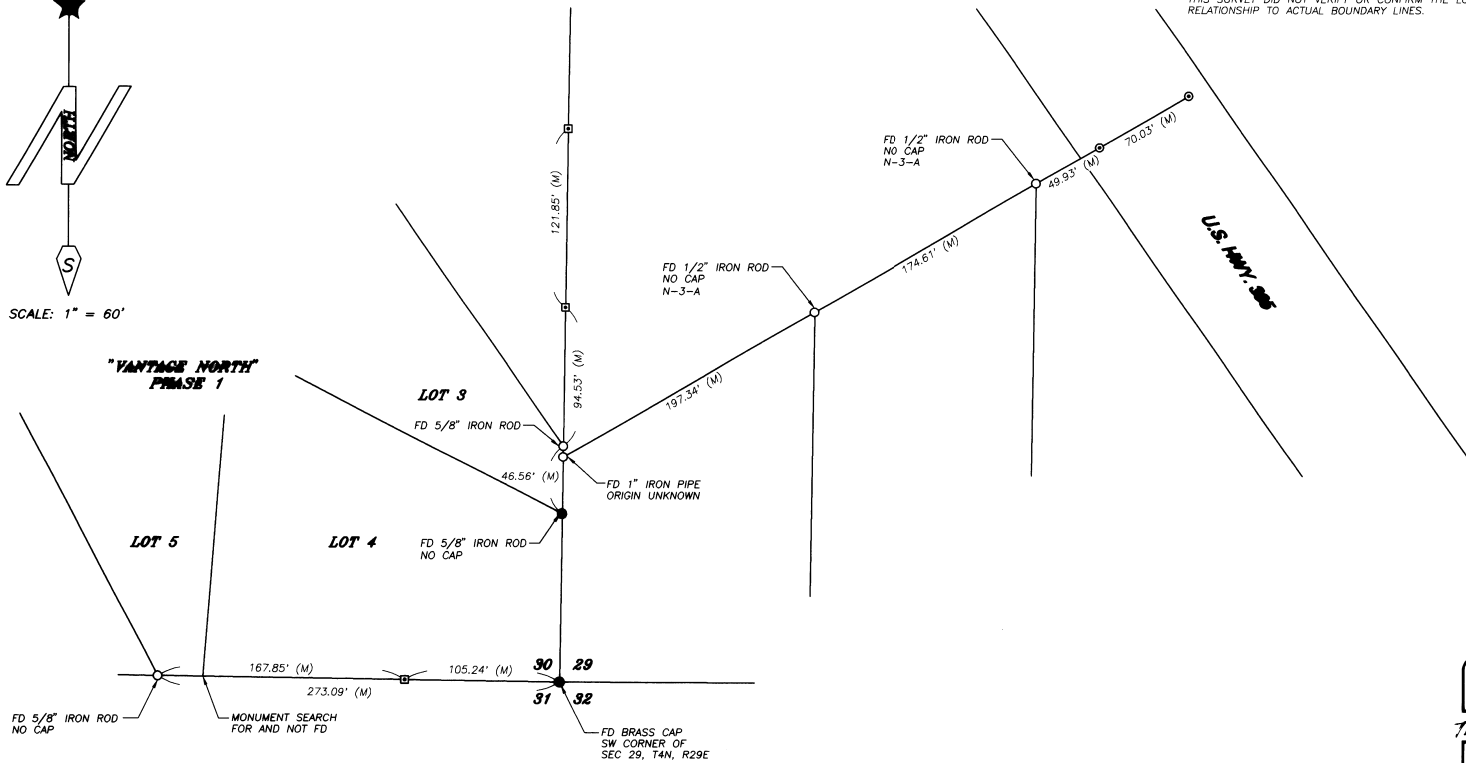
MORALE:

THE PURPOSE OF THIS SURVEY WAS TO REFERENCE FOUND MONUMENTS PRIOR TO PIPELINE CONSTRUCTION AND RESET DISTURBED MONUMENTS AFTER CONSTRUCTION ACTIVITIES. MONUMENTS SHOWN AS FOUND WERE REFERENCED ON SEPTEMBER 6, 1997 AND REPLACED WITH A MONUMENT AS NOTED ON NOVEMBER 3, 1997.

THIS SURVEY DID NOT VERIFY OR CONFIRM THE LOCATION OF MONUMENTS IN RELATIONSHIP TO ACTUAL BOUNDARY LINES.



SCALE: 1" = 60'



LEGEND

- FOUND MONUMENT AS NOTED ON 09/06/1997
 RESET WITH 5/8" x 30" IRON ROD WITH YELLOW PLASTIC CAP STAMPED "PLS 2351" ON 11/03/1997
- ⊙ SET P.K. NAIL AND SHINER IN ASPHALT REFERENCE POINT
- ⊠ SET 2x2 HUB AND TACK - REFERENCE POINT
- FOUND MONUMENT AS NOTED, NOT DISTURBED
- (M) MEASURED DIMENSION

REGISTERED
 PROFESSIONAL
 LAND SURVEYOR
 Thomas G. Nelson
 OREGON
 JULY 26, 1998
 THOMAS G. NELSON
 #2351

RENEWAL 12/31/98
 PROJECT NO.: N97037
 SHEET 1 OF 1

RECEIVED BY
 Umatilla County Surveyor
 Date 12-97
 Rec'd By [Signature]
 No. 97-243-B