

**SURVEY FOR  
UMATILLA NATIONAL FOREST  
OF  
AP-584 TO AP-585  
TOWER UNIT  
NORTH FORK JOHN DAY WILDERNESS  
LOCATED IN  
THE SW1/4 OF SECTION 28,  
T. 6 S., R. 34 E., W.M.  
UMATILLA COUNTY, OREGON  
SEPTEMBER, 1997**

I, DAVID A. SCHLAICH, A REGISTERED LAND SURVEYOR IN THE STATE OF OREGON, HEREBY CERTIFY THAT THIS PLAT AND THE NOTES HEREON ARE A TRUE AND CORRECT REPRESENTATION OF A SURVEY I CONDUCTED FROM JUNE THROUGH SEPTEMBER OF 1997, AT THE REQUEST OF THE UMATILLA NATIONAL FOREST, IN ACCORDANCE WITH THE STATUTES OF THE STATE OF OREGON AND THE 1973 B.L.M. MANUAL OF SURVEYING INSTRUCTIONS.

REGISTERED  
PROFESSIONAL  
LAND SURVEYOR  
*David A. Schlaich*  
OREGON  
JULY 16, 1987  
DAVID A. SCHLAICH  
2308  
RENEWS 06/30/98

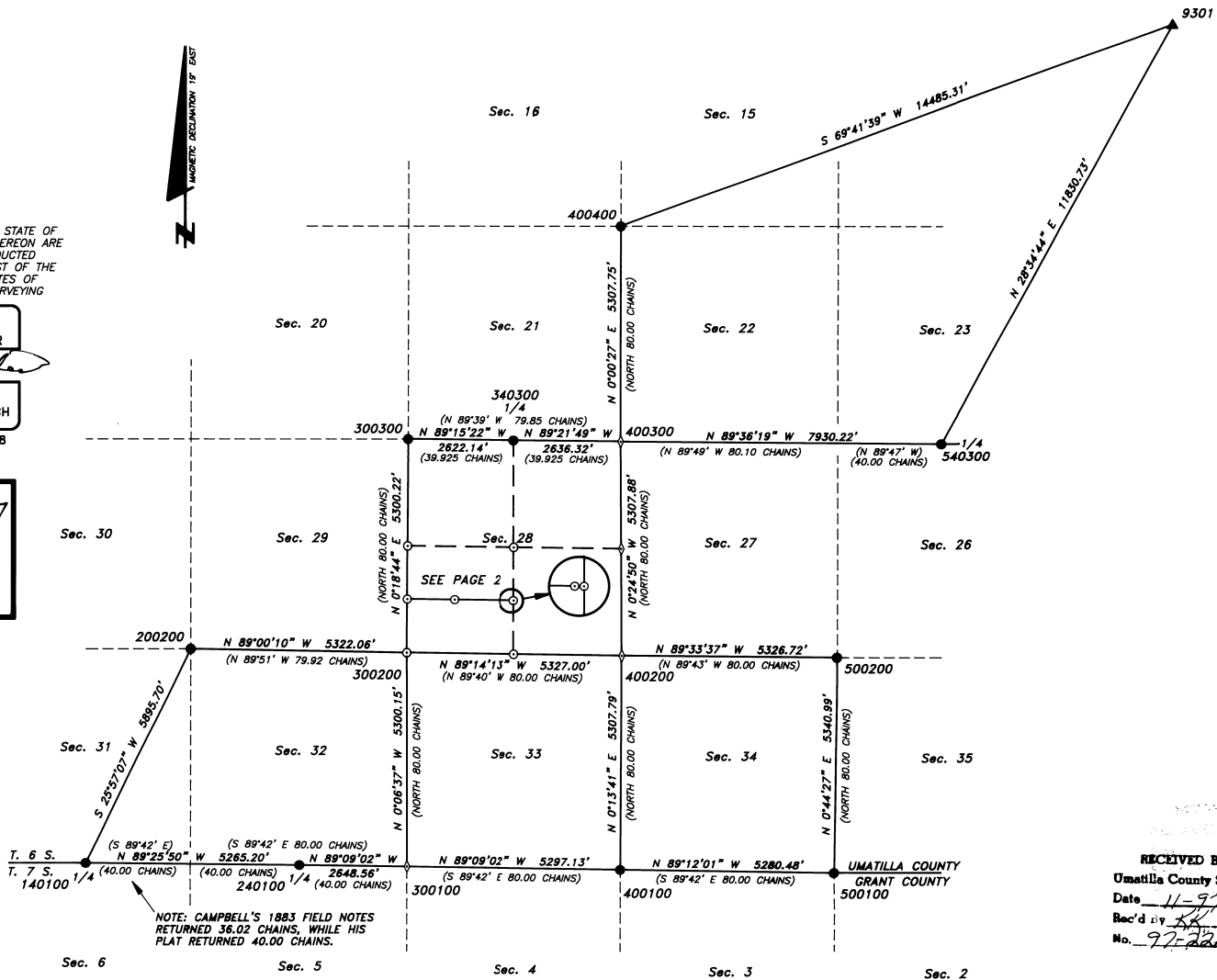
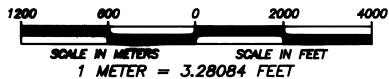
DAVID A. SCHLAICH -- RLS 2308  
UMATILLA NATIONAL FOREST  
2517 S.W. HAILEY AVENUE  
PENDLETON, OREGON 97801  
PHONE: (541) 278-3747

REVIEWED BY:  
*Dennis F. Taylor* Nov 4, 1997  
SIGNATURE DATE  
I CERTIFY THAT THIS SURVEY WAS PERFORMED AT THE REQUEST OF THE UMATILLA NATIONAL FOREST SUPERVISOR  
*[Signature]* 11/4/97  
DATE

**LEGEND**

- ▲ GPS POINT
- CORNER FOUND
- CORNER SET
- ◇ PROPORTIONED CORNER NOT SET
- ( ) RECORD MEASUREMENT (FRANK W. CAMPBELL 1883)

SCALE: 1 INCH = 2000 FEET



RECEIVED BY  
Umatilla County Surveyor  
Date 11-97  
Rec'd by [Signature]  
No. 97-228

**SURVEY FOR  
UMATILLA NATIONAL FOREST  
OF  
AP-584 TO AP-585  
TOWER UNIT  
NORTH FORK JOHN DAY WILDERNESS  
LOCATED IN  
THE SW1/4 OF SECTION 28,  
T. 6 S., R. 34 E., W.M.  
UMATILLA COUNTY, OREGON  
SEPTEMBER, 1997**



REGISTERED  
PROFESSIONAL  
LAND SURVEYOR

*David A. Schlaich*

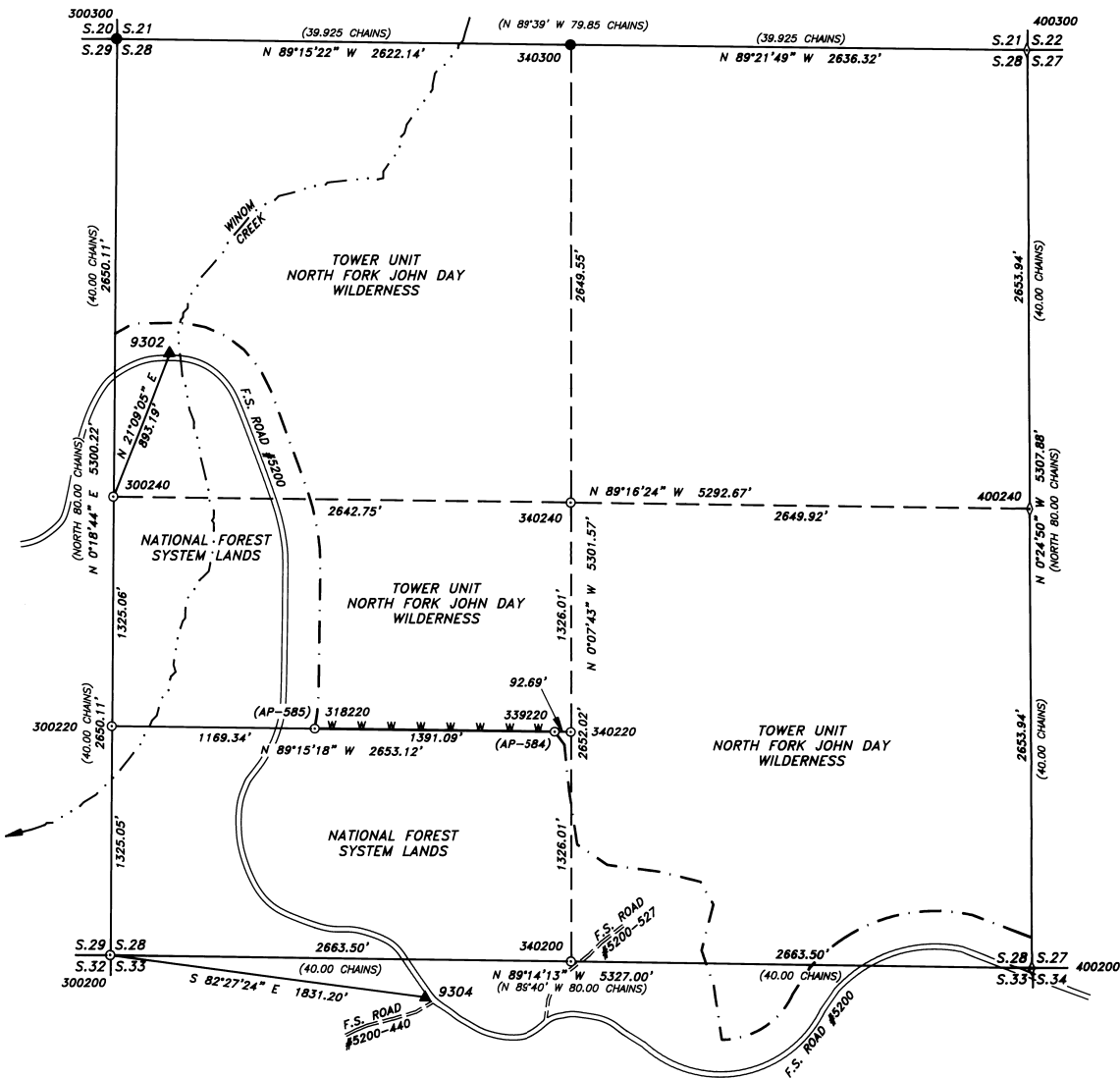
OREGON  
JULY 16, 1987  
DAVID A. SCHLAICH  
2308  
RENEWS 06/30/98

**LEGEND**

- ▲ GPS POINT
- CORNER FOUND
- CORNER SET
- ◇ PROPORTIONED CORNER NOT SET
- W W W POSTED WILDERNESS BOUNDARY
- WILDERNESS BOUNDARY
- ( ) RECORD MEASUREMENT (FRANK W. CAMPBELL 1883)

SCALE: 1 INCH = 500 FEET

SCALE IN METERS      SCALE IN FEET  
1 METER = 3.28084 FEET



**RECEIVED BY**  
Umatilla County Surveyor

Date 11-97  
Rec'd by AK  
No. 97-221-B

**SURVEY FOR  
UMATILLA NATIONAL FOREST  
OF  
AP-584 TO AP-585  
TOWER UNIT  
NORTH FORK JOHN DAY WILDERNESS  
LOCATED IN  
THE SW1/4 OF SECTION 28,  
T. 6 S., R. 34 E., W.M.  
UMATILLA COUNTY, OREGON  
SEPTEMBER, 1997**

**NARRATIVE:**

**PURPOSE:**

THE PURPOSE OF THIS SURVEY WAS TO MONUMENT AND MARK THE BOUNDARY OF TOWER UNIT OF THE NORTH FORK JOHN DAY WILDERNESS FROM ANGLE POINT 584 TO ANGLE POINT 585.

**HISTORY:**

1883, FRANK W. CAMPBELL, U.S. DEPUTY SURVEYOR, SURVEYED THE EXTERIOR BOUNDARIES AND SUBDIVIDED THE TOWNSHIP UNDER GENERAL LAND OFFICE CONTRACT NUMBER 468.

1986, CLAYTON J. MARTIN, REGISTERED LAND SURVEYOR NO. 1910, SURVEYED SECTION 2, T. 7 S., R. 34 E. (GRANT COUNTY MAP SURVEY NO. 909).

1993, DENNIS L. GAYLORD, REGISTERED LAND SURVEYOR NO. 1636, REMONUMENTED THE CORNER OF SECTIONS 15, 16, 21 & 22, THE CORNER OF SECTIONS 20, 21, 28 & 29, THE 1/4 CORNER OF SECTIONS 21 & 28, THE 1/4 CORNER OF SECTIONS 23 & 26, THE CORNER OF SECTIONS 29, 30, 31 & 32, THE CORNER OF SECTIONS 26, 27, 34 & 35, AND THE 1/4 CORNER OF SECTION 31, T. 6 S., R. 34 E., & SECTION 6, T. 7 S., R. 34 E., FROM ORIGINAL EVIDENCE.

1993, DAVID A. SCHLAICH, REGISTERED LAND SURVEYOR NO. 2308, PERFORMED THE NORTH FORK JOHN DAY GPS CONTROL SURVEY WHICH ESTABLISHED GEODETIC CONTROL FOR THIS SURVEY (UMATILLA COUNTY SURVEY NO. 94-007-B; GRANT COUNTY MAP OF SURVEY NO. 1310).

1994, DENNIS L. GAYLORD, REGISTERED LAND SURVEYOR NO. 1636, REMONUMENTED THE 1/4 CORNER OF SECTION 32, T. 6 S., R. 34 E., AND SECTION 5, T. 7 S., T. 34 E., AND THE CORNER OF SECTIONS 33 & 34, T. 6 S., R. 34 E., & SECTIONS 3 & 4, T. 7 S., R. 34 E., FROM ORIGINAL EVIDENCE.

**PROCEDURES:**

THE DESCRIPTION UTILIZED TO LOCATE THE WILDERNESS BOUNDARY WAS OBTAINED FROM THE OPEN 2320 FILES LOCATED IN THE SUPERVISOR'S OFFICE OF THE UMATILLA NATIONAL FOREST LOCATED AT PENDELTON, OREGON.

THIS SEGMENT OF THE WILDERNESS BOUNDARY AS DESCRIBED ASCENDS A SPUR RIDGE TO THE CENTER SOUTH 1/16 CORNER OF SECTION 28 (AP-584). THE BOUNDARY THEN FOLLOWS THE EAST-WEST CENTERLINE OF THE SOUTHWEST 1/4 OF SECTION 28 TO A POINT WHICH IS 200 FEET EASTERLY AND PERPENDICULAR TO THE CENTERLINE OF FOREST ROAD 5200 (AP-585). THE BOUNDARY THEN PARALLELS FOREST ROAD 5200, 200 FEET EASTERLY AND NORTHERLY OF IT'S CENTERLINE.

DURING THE COURSE OF THIS SURVEY I FIND THAT THE CS1/16 CORNER OF SECTION 28 DOES NOT FALL ON THE SPUR RIDGE AS ASSUMED BY THE WILDERNESS BOUNDARY DESCRIPTION. THEREFORE IN ORDER TO PROTECT THE INTENT OF THE DESCRIPTION, I PLACED AP-584 AT THE INTERSECTION OF THE SPUR RIDGE WITH THE EAST-WEST CENTERLINE OF THE SOUTHWEST 1/4 OF SECTION 28. AP-585 WAS ESTABLISHED AT A POINT ON THE EAST-WEST CENTERLINE OF THE SOUTHWEST 1/4 OF SECTION 28 WHICH IS 200 FEET EASTERLY AND PERPENDICULAR TO THE CENTERLINE OF FOREST ROAD 5200 AS DESCRIBED.

A DILIGENT SEARCH WAS CONDUCTED DURING THE COURSE OF THIS SURVEY FOR ALL THE PUBLIC LAND SURVEY CORNERS WHICH CONTROL SECTION 28. NO ADDITIONAL CORNERS WERE FOUND, SO I DECLARE THEM LOST AND REESTABLISH THE LOST CORNERS OF SECTION 28 BY PROPORTIONATE MEASUREMENT.

THE SURVEY WAS CONDUCTED IN TWO PHASES. A GPS PHASE WHICH TIED TO ALL OF THE EXISTING CORNERS AND PROVIDED GEODETIC CONTROL FOR THE PROJECT AND A CONVENTIONAL SURVEY PHASE WHICH MONUMENTED AND MARKED THE BOUNDARY LINE.

THE GPS PHASE OF THE PROJECT WAS CONDUCTED USING FEDERAL GEODETIC CONTROL COMMITTEE (FGCC) ORDER C, SECOND ORDER, CLASS 1 GPS SURVEY SPECIFICATIONS. ALL COORDINATES PROVIDED ARE NAD83(1991) VALUES BASED ON THE OREGON HIGH PRECISION GPS CONTROL NETWORK.

THE EQUIPMENT USED WAS 3 TRIMBLE 4000SSE, DUAL FREQUENCY, RECEIVERS WITH EXTERNAL L1 & L2 GEODETIC ANTENNAS, NIKON TRIBRACHS AND STANDARD SURVEY TRIPODS. WILD'S HEIGHT HOOK SYSTEM WAS USED TO MEASURE ANTENNA HEIGHTS.

FAST STATIC CARRIER PHASE MEASUREMENTS AND DATA PROCESSING WAS USED ON ALL BASELINE MEASUREMENTS. THE BASELINE MEASUREMENTS WERE EVALUATED BY EXAMINATION OF STATISTICAL QUALITY INDICATORS AND LOOP CLOSURE ANALYSIS. THE BASELINE MEASUREMENTS WERE THEN ADJUSTED BY LEAST SQUARES USING EXISTING GPS POINTS 9301, 9302, 200200 (9303), 9304 AND 500200 (9305) AS FIXED CONTROL. THESE CONTROL POINTS ALSO PROVIDE THE SURVEY'S BASIS OF BEARING.

THE CONVENTIONAL PHASE OF THE SURVEY WAS CONDUCTED USING A TOPCON GTS-4 TOTAL STATION. THE ANGLE AND DISTANCE MEASUREMENTS WERE PROCESSED AND ADJUSTED BY LEAST SQUARES USING THE BUREAU OF LAND MANAGEMENT'S PC PROGRAM CMM (CADASTRAL MEASUREMENT MANAGEMENT). THIS PC PROGRAM WAS ALSO USED TO COMPUTE CORNER PROPORTIONS, SUBDIVIDE SECTION 28, CORNER MOVES AND POSTING OFFSETS.

BEARING TREES AND CORNER REFERENCES WERE TIED USING EITHER THE TOPCON GTS-4 OR A WARREN-KNIGHT SURVEYOR'S COMPASS (MAGNETIC DECLINATION 19' EAST). DISTANCE MEASUREMENTS TO THE BEARING TREES WERE TAKEN AT SIDE CENTER 1 FOOT ABOVE THE ROOT CROWN. TREE DIAMETER'S WERE MEASURED AT BREAST HEIGHT. ALL NEW BEARING TREES ARE DOUBLE BLAZED AND HAVE A 3/4" BRASS WASHER STAMPED "PLS 2308" NAILED TO THE LOWER BLAZE BY THE "BT" SCRIBING.

THE WILDERNESS BOUNDARY WAS MARKED BY SETTING 6 1/2 FOOT BROWN FIBERGLASS POSTS WITH WILDERNESS BOUNDARY DECALS WITHIN ONE FOOT OF THE SURVEYED BOUNDARY.

FIELD BOOKS ARE ON FILE AT THE SUPERVISOR'S OFFICE OF THE UMATILLA NATIONAL FOREST LOCATED AT PENDELTON, OREGON.

**DATUM: NAD83(1991) OREGON HIGH PRECISION GPS NETWORK  
STATE PLANE COORDINATES: OREGON NORTH ZONE IN METERS**

NO.	LATITUDE	LONGITUDE	NORTHING(Y)	EASTING(X)
9301	45°03'16.20048" N	118°33'49.63525" W	156045.070	2652489.051
9302	45°01'16.87511" N	118°38'07.71542" W	152230.033	2646929.107
9304	45°00'40.12007" N	118°37'47.13980" W	151106.234	2647405.677
140100	44°59'51.07854" N	118°40'02.35262" W	149525.027	2644480.263
200200	45°00'43.40740" N	118°39'26.45244" W	151157.715	2645229.447
240100	44°59'50.56198" N	118°38'49.10373" W	149545.675	2646084.395
300100	44°59'50.17439" N	118°38'12.25966" W	149552.272	2646891.362
300200	45°00'42.49302" N	118°38'12.40264" W	151166.681	2646851.011
300220	45°00'55.57266" N	118°38'12.30158" W	151167.352	2646843.989
300240	45°01'08.65228" N	118°38'12.20110" W	151974.022	2646836.788
300300	45°01'34.81141" N	118°38'12.00154" W	152781.360	2646822.535
318220	45°00'55.42259" N	118°37'56.02948" W	151573.946	2647200.169
339220	45°00'55.24407" N	118°37'56.67156" W	151578.249	2647624.002
340200	45°00'42.14294" N	118°37'35.34030" W	151174.642	2647662.517
340220	45°00'55.23218" N	118°37'35.38172" W	151578.537	2647652.242
340240	45°01'08.32140" N	118°37'35.42314" W	151982.430	2647641.968
340300	45°01'34.47536" N	118°37'35.50589" W	152789.463	2647621.438
400100	44°59'49.39918" N	118°36'58.57237" W	149565.770	2648505.297
400200	45°00'41.79285" N	118°36'58.27857" W	151182.707	2648474.024
400240	45°01'07.98963" N	118°36'58.54537" W	151990.964	2648449.332
400300	45°01'34.18637" N	118°36'58.81217" W	152799.220	2648424.642
400400	45°02'26.57975" N	118°36'58.80238" W	154416.010	2648387.153
500100	44°59'48.67175" N	118°35'45.11579" W	149581.032	2650114.143
500200	45°00'41.38918" N	118°35'44.15486" W	151208.297	2650068.829
540300	45°01'33.64704" N	118°35'08.43097" W	152839.365	2650840.579

NOTE: THE COORDINATES FOR THE CORNERS SET AND THE PROPORTION CORNERS WHICH WERE NOT SET WERE CALCULATED BY CMM USING A MEAN PROJECT ELEVATION OF 5300 FEET.

**9301**

JANIS 1989 (T. 6 S., R. 34 E., SECTION 13)

FOUND A 3/4" ALUMINUM ROD, WITH A 3 1/4" ALUMINUM CAP, PROJECTING 1/2" OUT OF A ROCK OUTCROP, MARKED AS SHOWN.



**9302**

WINOM CREEK 1993, (T. 6 S., R. 34 E., SECTION 28)

FOUND A 3 1/4" ALUMINUM CAP SET FLUSH WITH THE GROUND, MARKED AS SHOWN, FROM WHICH:

A METAL POST WITH LAND SURVEY MONUMENT SIGN, WEST, 4.0 FEET.



**9304**

WINOM CREEK NO. 2 1993, (T. 6 S., R. 34 E., SECTION 33)

FOUND A 3 1/4" ALUMINUM CAP SET FLUSH WITH THE GROUND, MARKED AS SHOWN, FROM WHICH:

A METAL POST WITH LAND SURVEY MONUMENT SIGN, SOUTH, 4.0 FEET.



**140100**

1/4 CORNER OF SECTION 31, T. 6 S., R. 34 E. & SECTION 6, T. 7 S., R. 34 E.

FOUND A 2 1/2" ALUMINUM PIPE, WITH A 3 1/4" ALUMINUM CAP, PROJECTING 2" OUT OF THE GROUND, MARKED AS SHOWN, FROM WHICH:



28" DEAD DOUGLAS FIR, N 40° E, 28.4 FEET, WITH HEALED DOUBLE BLAZE (ORIGINAL BT).

16" DEAD WHITE FIR, S 53 1/2° E, 57.1 FEET, WITH BURNT OUT DOUBLE BLAZE AND 3/4" BRASS WASHER STAMPED "PLS 1636" NAILED TO THE LOWER BLAZE.  
29" DEAD DOUGLAS FIR, S 56 1/2° W, 48.5 FEET, WITH BURNT OUT DOUBLE BLAZE AND 3/4" BRASS WASHER STAMPED "PLS 1636" NAILED TO THE LOWER BLAZE.  
16" DEAD WHITE FIR, N 16 1/2° W, 27.5 FEET, WITH BURNT OUT DOUBLE BLAZE AND 3/4" BRASS WASHER STAMPED "PLS 1636" NAILED TO THE LOWER BLAZE.

**NEW REFERENCES:**

RM, 5/8" BY 24" REBAR WITH YELLOW PLASTIC CAP MARKED "UMATILLA N.F.", SET 23" IN THE GROUND, N 43° E, 20.03 FEET.  
RM, 5/8" BY 24" REBAR WITH RED PLASTIC CAP MARKED "UMATILLA N.F.", SET 23" IN THE GROUND, S 45° E, 18.43 FEET.  
RM, 5/8" BY 24" REBAR WITH RED PLASTIC CAP MARKED "UMATILLA N.F.", SET 23" IN THE GROUND, S 42 1/2° W, 28.90 FEET.  
RM, 5/8" BY 24" REBAR WITH YELLOW PLASTIC CAP MARKED "UMATILLA N.F.", SET 23" IN THE GROUND, N 47 1/2° W, 11.96 FEET.

REGISTERED  
PROFESSIONAL  
LAND SURVEYOR

*David A. Schlaich*

OREGON  
JULY 16, 1987  
DAVID A. SCHLAICH  
2308

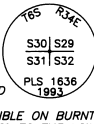
RENEWS 06/30/98

RECEIVED BY  
Umatilla County Surveyors  
Date 11-97  
Rec'd by AK  
No. 97-221-B

**SURVEY FOR  
UMATILLA NATIONAL FOREST  
OF  
AP-584 TO AP-585  
TOWER UNIT  
NORTH FORK JOHN DAY WILDERNESS  
LOCATED IN  
THE SW1/4 OF SECTION 28,  
T. 6 S., R. 34 E., W.M.  
UMATILLA COUNTY, OREGON  
SEPTEMBER, 1997**

**200200**  
CORNER OF SECTIONS 29, 30, 31 & 32, T. 6 S., R. 34 E.

FOUND A 2 1/2" ALUMINUM PIPE, SET FLUSH WITH THE GROUND, MARKED AS SHOWN, FROM WHICH:



9" DEAD LODGEPOLE PINE, N 20 1/2' E, 83.7 FT., WITH SCRIBING VISIBLE ON BURNT DOUBLE BLAZE & 3/4" BRASS WASHER STAMPED "PLS 1636" NAILED TO THE LOWER BLAZE.  
7" DEAD LODGEPOLE PINE, S 31' E, 43.1 FEET, WITH SCRIBING VISIBLE ON BURNT DOUBLE BLAZE & 3/4" BRASS WASHER STAMPED "PLS 1636" NAILED TO THE LOWER BLAZE.  
8" DEAD LODGEPOLE PINE, S 84 1/2' W, 58.4 FEET, WITH SCRIBING VISIBLE ON BURNT DOUBLE BLAZE & 3/4" BRASS WASHER STAMPED "PLS 1636" NAILED TO THE LOWER BLAZE.  
8" DEAD LODGEPOLE PINE, N 44' W, 76.3 FEET, WITH SCRIBING VISIBLE ON BURNT DOUBLE BLAZE & 3/4" BRASS WASHER STAMPED "PLS 1636" NAILED TO THE LOWER BLAZE.  
NEW REFERENCES:  
RM, 5/8" BY 24" REBAR WITH YELLOW PLASTIC CAP MARKED "UMATILLA N.F.", SET 15" IN THE GROUND, N 45' E, 33.93 FEET.  
RM, 5/8" BY 24" REBAR WITH RED PLASTIC CAP MARKED "UMATILLA N.F.", SET 16" IN THE GROUND, S 44' E, 22.04 FEET.  
RM, 5/8" BY 24" REBAR WITH RED PLASTIC CAP MARKED "UMATILLA N.F.", SET 17" IN THE GROUND, S 44 1/2' W, 20.74 FEET.  
RM, 5/8" BY 24" REBAR WITH YELLOW PLASTIC CAP MARKED "UMATILLA N.F.", SET 15" IN THE GROUND, N 41 1/2' W, 31.16 FEET.

**240100**  
1/4 CORNER OF SECTION 32, T. 6 S., R. 34 E. AND SECTION 5, T. 7 S., R. 34 E.

FOUND A 2 1/2" ALUMINUM PIPE, WITH A 3 1/4" ALUMINUM CAP, PROJECTING 5" OUT OF THE GROUND SURROUNDED BY A SMALL STONE MOUND, MARKED AS SHOWN, FROM WHICH:



15" WESTERN LARCH, N 24' E, 45.3 FEET, WITH SCRIBING VISIBLE ON DOUBLE BLAZE AND 3/4" BRASS WASHER STAMPED "PLS 1636" NAILED TO THE LOWER BLAZE.  
14" WESTERN LARCH, N 45' E, 9.2 FEET, WITH SCRIBING VISIBLE ON CHOPPED OPEN BLAZE (ORIGINAL BT).  
10" WESTERN LARCH, S 62' E, 23.1 FEET, WITH SCRIBING VISIBLE ON DOUBLE BLAZE AND 3/4" BRASS WASHER STAMPED "PLS 1636" NAILED TO LOWER BLAZE.  
24" WHITE FIR, S 20 1/2' W, 53.9 FEET, WITH SCRIBING VISIBLE ON DOUBLE BLAZE AND 3/4" BRASS WASHER STAMPED "PLS 1636" NAILED TO LOWER BLAZE.  
14" WESTERN LARCH, N 27 1/4' W, 28.9 FEET, WITH SCRIBING VISIBLE ON DOUBLE BLAZE AND 3/4" BRASS WASHER STAMPED "PLS 1636" NAILED TO LOWER BLAZE.

**300200**  
CORNER OF SECTIONS 28, 29, 32 & 33, T. 6 S., R. 34 E.

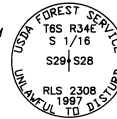
SET A 2 1/2" X 30" ALUMINUM PIPE, WITH A 3 1/4" ALUMINUM CAP, 20" IN THE GROUND, SURROUNDED BY A STONE MOUND 1 1/2" IN DIAMETER BY 10" HIGH, MARKED AS SHOWN, FROM WHICH:



RM, 5/8" BY 24" REBAR WITH YELLOW PLASTIC CAP MARKED "UMATILLA N.F.", SET 23" IN THE GROUND, N 42'21" E, 22.62 FT.  
RM, 5/8" BY 24" REBAR WITH RED PLASTIC CAP MARKED "UMATILLA N.F.", SET 22" IN THE GROUND, S 47'05" E, 19.87 FEET.  
24" WESTERN LARCH, S 89' W, 198.0 FEET, SCRIBED "T6S R34E S32" BT".  
RM, 5/8" BY 24" REBAR WITH YELLOW PLASTIC CAP MARKED "UMATILLA N.F.", SET 23" IN THE GROUND, N 46'01" W, 21.01 FEET.

**300220**  
S1/16 CORNER OF SECTIONS 28 & 29, T. 6 S., R. 34 E.

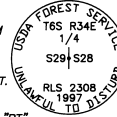
SET A 2 1/2" X 30" ALUMINUM PIPE, WITH A 3 1/4" ALUMINUM CAP, 27" IN THE GROUND SURROUNDED BY A RING OF STONES, MARKED AS SHOWN, FROM WHICH:



27" WESTERN LARCH, S 34 1/2' E, 32.9 FEET, SCRIBED "S1/16 S28" BT".  
25" WESTERN LARCH, N 63 3/4' W, 49.5 FEET, SCRIBED "S1/16 S29" BT".

**300240**  
1/4 CORNER OF SECTIONS 28 & 29, T. 6 S., R. 34 E.

SET A 2 1/2" X 30" ALUMINUM PIPE, WITH A 3 1/4" ALUMINUM CAP, 29" IN THE GROUND, MARKED AS SHOWN, FROM WHICH:



RM, 5/8" BY 24" REBAR WITH YELLOW PLASTIC CAP MARKED "UMATILLA N.F.", SET 19" IN THE GROUND, N 36'58" E, 20.44 FT.  
6" LODGEPOLE PINE, S 81 3/4' E, 52.8 FEET, MARKED "1/4 S28" BT".  
27" WESTERN LARCH, S 11' W, 90.1 FEET, SCRIBED "1/4 S29" BT".  
13" WESTERN LARCH, N 20 1/4' W, 55.4 FEET, SCRIBED "1/4 29" BT".

**300300**  
CORNER OF SECTIONS 20, 21, 28 & 29, T. 6 S., R. 34 E.

FOUND A 2 1/2" ALUMINUM PIPE, WITH A 3 1/4" ALUMINUM CAP, PROJECTING 3" OUT OF THE GROUND, MARKED AS SHOWN, FROM WHICH:

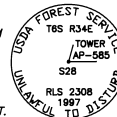


22" DEAD WESTERN LARCH, N 9 1/2' E, 45.5 FEET, WITH SCRIBING VISIBLE ON BURNT DOUBLE BLAZE AND 3/4" BRASS WASHER STAMPED "PLS 1636" NAILED TO THE LOWER BLAZE.  
8" DEAD LODGEPOLE PINE, S 79' E, 7.5 FEET, WITH SCRIBING VISIBLE ON BURNT DOUBLE BLAZE AND 3/4" BRASS WASHER STAMPED "PLS 1636" NAILED TO THE LOWER BLAZE.  
26" DEAD WESTERN LARCH, S 59' W, 87.1 FEET, WITH HEALED DOUBLE BLAZE (ORIGINAL BT).

7" DEAD LODGEPOLE PINE, N 43' W, 26.8 FEET, WITH SCRIBING VISIBLE ON BURNT DOUBLE BLAZE AND 3/4" BRASS WASHER STAMPED "PLS 1636" NAILED TO THE LOWER BLAZE.  
BURNT OFF WESTERN LARCH STUMP, N 50' W, 34.3 FEET (ORIGINAL BT).  
NEW REFERENCES:  
RM, 5/8" BY 24" REBAR WITH YELLOW PLASTIC CAP MARKED "UMATILLA N.F.", SET 23" IN THE GROUND, N 46 1/4' E, 19.66 FEET.  
RM, 5/8" BY 24" REBAR WITH RED PLASTIC CAP MARKED "UMATILLA N.F.", SET 23" IN THE GROUND, S 48 1/4' E, 18.58 FEET.  
RM, 5/8" BY 24" REBAR WITH RED PLASTIC CAP MARKED "UMATILLA N.F.", SET 23" IN THE GROUND, S 45 3/4' W, 17.84 FEET.  
RM, 5/8" BY 24" REBAR WITH YELLOW PLASTIC CAP MARKED "UMATILLA N.F.", SET FLUSH WITH THE GROUND, N 48 1/2' W, 23.32 FEET.

**318220**  
AP-585 OF TOWER UNIT, SECTION 28, T. 6 S., R. 34 E.

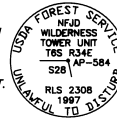
SET A 2 1/2" X 30" ALUMINUM PIPE, WITH A 3 1/4" ALUMINUM CAP, 24" IN THE GROUND, MARKED AS SHOWN, FROM WHICH:



RM, 5/8" BY 36" REBAR WITH YELLOW PLASTIC CAP MARKED "UMATILLA N.F.", SET 32" IN THE GROUND, N 12'46" E, 9.68 FT.  
RM, 5/8" BY 36" REBAR WITH RED PLASTIC CAP MARKED "UMATILLA N.F.", SET 28" IN THE GROUND, S 89'19" E, 61.31 FT.

**339220**  
AP-584 OF TOWER UNIT, SECTION 28, T. 6 S., R. 34 E.

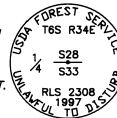
SET A 2 1/2" X 30" ALUMINUM PIPE, WITH A 3 1/4" ALUMINUM CAP, 24" IN THE GROUND, MARKED AS SHOWN, FROM WHICH:



RM, 5/8" BY 24" REBAR WITH RED PLASTIC CAP MARKED "UMATILLA N.F.", SET 21" IN THE GROUND, S 36'32" E, 95.15 FT.  
19" WESTERN LARCH, S 41 3/4' W, 21.1 FEET, SCRIBED "WB/584" BT".

**340200**  
1/4 CORNER OF SECTIONS 28 & 33, T. 6 S., R. 34 E.

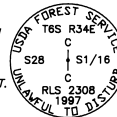
SET A 2 1/2" X 30" ALUMINUM PIPE, WITH A 3 1/4" ALUMINUM CAP, 22" IN THE GROUND, MARKED AS SHOWN, FROM WHICH:



RM, 5/8" BY 24" REBAR WITH YELLOW PLASTIC CAP MARKED "UMATILLA N.F.", SET 19" IN THE GROUND, N 32'02" E, 38.24 FT.  
5" LODGEPOLE PINE, S 48 1/4' E, 17.4 FEET, SCRIBED "1/4 S33" BT".  
9" LODGEPOLE PINE, S 10 1/4' W, 3.8 FEET, SCRIBED "1/4 S33" BT".  
RM, 5/8" BY 24" REBAR WITH YELLOW PLASTIC CAP MARKED "UMATILLA N.F.", SET 18" IN THE GROUND, N 48'57" W, 35.45 FEET.

**340220**  
C51/16 CORNER OF SECTION 28, T. 6 S., R. 34 E.

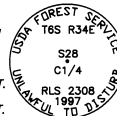
SET A 2 1/2" X 30" ALUMINUM PIPE, WITH A 3 1/4" ALUMINUM CAP, 23" IN THE GROUND, MARKED AS SHOWN, FROM WHICH:



RM, 5/8" BY 24" REBAR WITH RED PLASTIC CAP MARKED "UMATILLA N.F.", SET 21" IN THE GROUND, S 25'35" W, 83.45 FT.  
15" WESTERN LARCH, N 19 3/4' W, 106.6 FEET, SCRIBED "C51/16 S28" BT".

**340240**  
C1/4 CORNER OF SECTION 28, T. 6 S., R. 34 E.

SET A 2 1/2" X 30" ALUMINUM PIPE, WITH A 3 1/4" ALUMINUM CAP, 27" IN THE GROUND, MARKED AS SHOWN, FROM WHICH:



RM, 5/8" BY 24" REBAR WITH YELLOW PLASTIC CAP MARKED "UMATILLA N.F.", SET 20" IN THE GROUND, N 45'33" E, 19.67 FT.  
RM, 5/8" BY 24" REBAR WITH RED PLASTIC CAP MARKED "UMATILLA N.F.", SET 22" IN THE GROUND, S 44'58" E, 23.93 FT.  
12" WESTERN LARCH, S 73 1/2' W, 84.5 FEET, SCRIBED "C1/4 S28" BT".  
14" WESTERN LARCH, N 77 1/2' W, 77.6 FEET, SCRIBED "C1/4 S28" BT".

REGISTERED  
PROFESSIONAL  
LAND SURVEYOR  
*David A. Schlaich*  
OREGON  
JULY 16, 1987  
DAVID A. SCHLAICH  
2308  
RENEWS 06/30/98

RECEIVED BY  
Umatilla County Surveyor  
Date 11-97  
Rec'd by  
No. 97-221-B

**SURVEY FOR  
UMATILLA NATIONAL FOREST  
OF  
AP-584 TO AP-585  
TOWER UNIT  
NORTH FORK JOHN DAY WILDERNESS  
LOCATED IN  
THE SW1/4 OF SECTION 28,  
T. 6 S., R. 34 E., W.M.  
UMATILLA COUNTY, OREGON  
SEPTEMBER, 1997**

**340300**

1/4 CORNER OF SECTIONS 21 & 28, T. 6 S., R. 34 E.

FOUND A 2 1/2" ALUMINUM PIPE, WITH A 3 1/4" ALUMINUM CAP, PROJECTING 3" OUT OF THE GROUND, MARKED AS SHOWN, FROM WHICH:

5" DEAD WESTERN LARCH, N 39 1/2° E, 37.2 FEET, WITH SCRIBING VISIBLE ON BURNT DOUBLE BLAZE AND 3/4" BRASS WASHER STAMPED "PLS 1636" NAILED TO THE LOWER BLAZE.

21" DEAD WESTERN LARCH, S 31° E, 13.2 FEET, WITH HEALED DOUBLE BLAZE (ORIGINAL BT).

7" DEAD WESTERN LARCH, S 48° W, 32.8 FEET, WITH SCRIBING VISIBLE ON BURNT DOUBLE BLAZE AND 3/4" BRASS WASHER STAMPED "PLS 1636" NAILED TO THE LOWER BLAZE.

7" DEAD WESTERN LARCH, N 58 1/2° W, 68.2 FEET, WITH SCRIBING VISIBLE ON BURNT DOUBLE BLAZE AND 3/4" BRASS WASHER STAMPED "PLS 1636" NAILED TO THE LOWER BLAZE.

NEW REFERENCES:  
RM, 5/8" BY 24" REBAR WITH YELLOW PLASTIC CAP MARKED "UMATILLA N.F.", SET 23" IN THE GROUND, N 50 1/2° E, 18.53 FEET.

RM, 5/8" BY 24" REBAR WITH RED PLASTIC CAP MARKED "UMATILLA N.F.", SET 23" IN THE GROUND, S 7 1/2° E, 17.40 FEET.

RM, 5/8" BY 24" REBAR WITH RED PLASTIC CAP MARKED "UMATILLA N.F.", SET 23" IN THE GROUND, S 52° W, 14.52 FEET.

RM, 5/8" BY 24" REBAR WITH YELLOW PLASTIC CAP MARKED "UMATILLA N.F.", SET 21" IN THE GROUND, N 7 1/2° W, 21.58 FEET.



**400100**

CORNER OF SECTIONS 33 & 34, T. 6 S., R. 34 E. AND SECTIONS 3 & 4, T. 7 S., R. 34 E.

FOUND A 2 1/2" ALUMINUM PIPE, WITH A 3 1/4" ALUMINUM CAP, PROJECTING 4" OUT OF THE GROUND, MARKED AS SHOWN, FROM WHICH:

9" WESTERN LARCH, N 53 1/2° E, 46.4 FEET, WITH SCRIBING VISIBLE ON DOUBLE BLAZE AND 3/4" BRASS WASHER STAMPED "PLS 1636" NAILED TO THE LOWER BLAZE.

11" WESTERN LARCH, S 89° E, 47.7 FT., WITH SCRIBING VISIBLE ON DOUBLE BLAZE AND 3/4" BRASS WASHER STAMPED "PLS 1636" NAILED TO THE LOWER BLAZE.

31" WHITE FIR, S 63° W, 13.2 FEET (ORIGINAL BT).

7" LODGEPOLE PINE, N 53° W, 35.0 FEET, WITH SCRIBING VISIBLE ON DOUBLE BLAZE AND 3/4" BRASS WASHER STAMPED "PLS 1636" NAILED TO LOWER BLAZE.

33" WHITE FIR, N 35 1/2° W, 19.1 FEET, WITH SCRIBING VISIBLE ON CHOPPED BLAZE (ORIGINAL BT).



**400400**

CORNER OF SECTIONS 15, 16, 21 & 22, T. 6 S., R. 34 E.

FOUND A 2 1/2" ALUMINUM PIPE, WITH A 3 1/4" ALUMINUM CAP, SET FLUSH WITH THE GROUND SURROUNDED BY A SMALL STONE MOUND, MARKED AS SHOWN, FROM WHICH:

20" WESTERN LARCH, N 28 1/2° E, 90.4 FEET, WITH BURNT OUT BLAZE (ORIGINAL BT).

15" WESTERN LARCH, S 55° E, 76.6 FEET, WITH SCRIBING VISIBLE ON BURNT DOUBLE BLAZE AND 3/4" BRASS WASHER STAMPED "PLS 1636" NAILED TO THE LOWER BLAZE.

15" WHITE FIR, S 31 1/4° W, 28.3 FEET, WITH SCRIBING VISIBLE ON DOUBLE BLAZE AND 3/4" BRASS WASHER STAMPED "PLS 1636" NAILED TO THE LOWER BLAZE.

20" DEAD WESTERN LARCH, N 18 1/2° W, 89.8 FEET, WITH BURNT OUT BLAZE (ORIGINAL BT).

NEW REFERENCE:  
RM, 5/8" BY 24" REBAR WITH RED PLASTIC CAP MARKED "UMATILLA N.F.", SET 17" IN THE GROUND, N 51 1/2° W, 32.9 FEET.



REGISTERED  
PROFESSIONAL  
LAND SURVEYOR

*David A. Schlaich*  
OREGON  
JULY 16, 1987  
DAVID A. SCHLAICH  
2308

RENEWS 06/30/98

**500100**

CORNER OF SECTIONS 34 & 35, T. 6 S., R. 34 E., AND SECTIONS 2 & 3, T. 7 S., R. 34 E.

FOUND A 2 1/2" ALUMINUM PIPE, WITH A 2 1/2" ALUMINUM CAP, PROJECTING 24" OUT OF THE GROUND SURROUNDED BY A STONE MOUND 3 1/2" IN DIAMETER BY 19" HIGH, MARKED AS SHOWN, FROM WHICH:

8" PONDEROSA PINE, N 33° E, 17.1 FEET, WITH SCRIBING VISIBLE ON PARTIALLY HEALED BLAZE AND 3/4" BRASS WASHER STAMPED "RPLS 1910" NAILED TO THE LOWER PART OF THE BLAZE.

STONE MOUND, 2 1/2" IN DIAMETER BY 16" HIGH, N 80 1/4° E, 71.5 FEET.

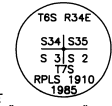
29" PONDEROSA PINE SNAG, N 83 1/2° E, 107.3 FEET, WITH SCRIBING VISIBLE ON PARTIALLY HEALED DOUBLE BLAZE (ORIGINAL BT).

10" DOUGLAS FIR, S 89° E, 73.7 FEET, WITH SCRIBING VISIBLE ON PARTIALLY HEALED BLAZE AND A 3/4" BRASS WASHER STAMPED "RPLS 1910" NAILED TO THE LOWER PART OF THE BLAZE.

38" PONDEROSA PINE, S 63° W, 103.6 FEET, WITH SCRIBING VISIBLE ON PARTIALLY CUT OPEN BLAZE (ORIGINAL BT).

24" DOWNED PONDEROSA PINE SNAG, N 65° W, 124.7 FEET, WITH SCRIBING VISIBLE ON UPPER BLAZE (ORIGINAL BT).

11" DOUGLAS FIR, N 43° W, 65.7 FEET, WITH SCRIBING VISIBLE ON PARTIALLY HEALED BLAZE AND 3/4" BRASS WASHER STAMPED "RPLS 1910" NAILED TO THE LOWER PART OF THE BLAZE.



**500200**

CORNER OF SECTIONS 26, 27, 34 & 35, T. 6 S., R. 34 E.

FOUND A 2 1/2" ALUMINUM PIPE, WITH A 2 1/2" ALUMINUM CAP, PROJECTING 4" OUT OF THE GROUND SURROUNDED BY A SMALL RING OF STONE, MARKED AS SHOWN, FROM WHICH:

ROOT HOLE OF DOWNED 7" LODGEPOLE PINE SNAG, N 34° E, 9.9 FEET, WITH SCRIBING VISIBLE (ORIGINAL BT).

10" WESTERN LARCH, N 85 1/2° E, 44.8 FEET, WITH SCRIBING VISIBLE ON DOUBLE BLAZE & 3/4" BRASS WASHER STAMPED "PLS 1636" NAILED TO THE LOWER BLAZE.

ROOT HOLE OF DOWNED 7" LODGEPOLE PINE, S 44° E, 23.8 FEET, WITH SCRIBING VISIBLE (ORIGINAL BT).

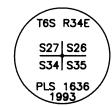
13" WESTERN LARCH, S 74° E, 25.5 FEET, WITH SCRIBING VISIBLE ON DOUBLE BLAZE & 3/4" BRASS WASHER STAMPED "PLS 1636" NAILED TO THE LOWER BLAZE.

ROOT HOLE OF DOWNED 7" LODGEPOLE PINE, S 58° W, 17.8 FEET, WITH SCRIBING VISIBLE (ORIGINAL BT).

16" WESTERN LARCH, S 43 1/4° W, 60.1 FEET, WITH SCRIBING VISIBLE ON DOUBLE BLAZE & 3/4" BRASS WASHER STAMPED "PLS 1636" NAILED TO THE LOWER BLAZE.

8" LODGEPOLE PINE SNAG, N 69° W, 17.2 FT., WITH SCRIBING VISIBLE (ORIGINAL BT).

11" WESTERN LARCH, N 18 1/2° W, 28.1 FEET, WITH SCRIBING VISIBLE ON DOUBLE BLAZE & 3/4" BRASS WASHER STAMPED "PLS 1636" NAILED TO THE LOWER BLAZE.



**540300**

1/4 CORNER OF SECTIONS 23 & 26, T. 6 S., R. 34 E.

FOUND A 2 1/2" ALUMINUM PIPE, WITH A 3 1/4" ALUMINUM CAP, SET FLUSH WITH THE GROUND SURROUNDED BY A RING OF STONES, MARKED AS SHOWN, FROM WHICH:

9" WESTERN LARCH, N 73° E, 73.5 FEET, WITH SCRIBING VISIBLE ON DOUBLE BLAZE & 3/4" BRASS WASHER STAMPED "PLS 1636" NAILED TO THE LOWER BLAZE.

15" DOUGLAS FIR, S 92° E, 52.6 FEET, WITH SCRIBING VISIBLE ON DOUBLE BLAZE & 3/4" BRASS WASHER STAMPED "PLS 1636" NAILED TO THE LOWER BLAZE.

28" DOUGLAS FIR, S 74° W, 32.2 FEET, WITH SCRIBING VISIBLE ON DOUBLE BLAZE & 3/4" BRASS WASHER STAMPED "PLS 1636" NAILED TO THE LOWER BLAZE.

10" LODGEPOLE PINE, N 20° W, 56.3 FEET, WITH SCRIBING VISIBLE ON DOUBLE BLAZE & 3/4" BRASS WASHER STAMPED "PLS 1636" NAILED TO THE LOWER BLAZE.



RECEIVED BY

Umatilla County Surveyor

Date 11-9-97

Rec'd by RE

No. 97-221-B