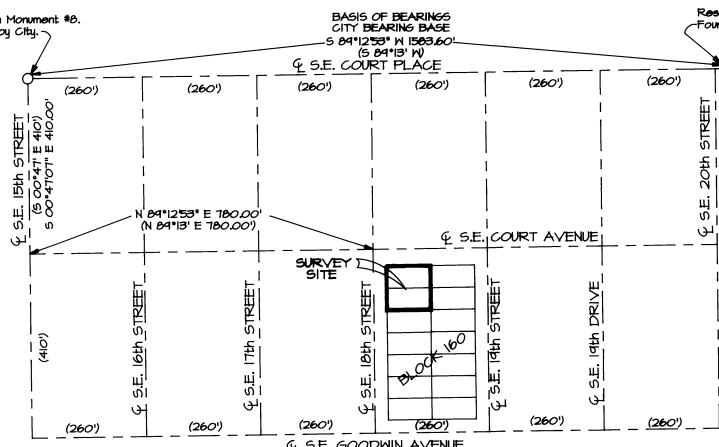


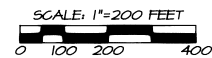
Reservation Addition Monument #8.
Found 2" brass cap by City.

BASIS OF BEARINGS
CITY BEARING BASE
S 84°12'53" N 1583.60'
(S 84°13' N)

Reservation Addition Monument #4
Found original corner stone.



CONTROL DIAGRAM



LEGEND

- - SET 5/8" BY 30" IRON PIN WITH 1/2" YELLOW PLASTIC CAP MARKED "OR PLS 1634".
- ⊙ - CHISELED "X" ON CONCRETE SLAB OR ROCK WALL AT CORNER POINT.
- - MONUMENT FOUND AS NOTED.
- (XOX) - RECORD DIMENSIONS, RESERVE ADDITION PLAT.
- ④ - LOT NUMBERS, BLOCK 160, RESERVE ADDITION.

NARRATIVE OF SURVEY

THIS SURVEY WAS MADE AT THE REQUEST OF CHAD WINDHAM, TO LOCATE AND MONUMENT BOUNDARIES OF LOTS 13 & 14, BLOCK 160, RESERVE ADDITION, PENDLETON, OREGON. CONTROLLING MONUMENTS ARE SHOWN. LOT PERIMETERS WERE LAID OUT BY RECORD ANGLE AND DISTANCE USING RESERVE ADDITION MONUMENTS NO. 2 & 14 FOR CONTROL.

THIS SURVEY WAS MADE WITH A 2 PERSON CREW USING A SOKKIA SET 4 B AUTOMATIC FIVE SECOND TOTAL STATION. THE SURVEY WAS MADE BY A COMBINATION OF CLOSED TRAVERSE AND OPEN FIELD TRAVERSE WITH RADIAL TIES, WITH ANGLES AND DISTANCES DOUBLED WHEN MEASURING TO CONTROLLING CORNERS AND SETTING MONUMENTS.

RECEIVED BY
 CHAD B. WINDHAM
 4-96
 916-598

WINDHAM

REGISTERED PROFESSIONAL LAND SURVEYOR

William R. Wells

OREGON
 JULY 14 1978
 WILLIAM L. HANLEY
 1639
 RENEWS 8/30/97

WILLIAM R. WELLS, PLS
 357 N.E. HWY. 11
 P.O. BOX 1696
 PENDLETON, OR 97801
 PHONE: (503) 276-6362

DATE: 2/10/96 DR. BY: WLH
 CK. BY: WRW NO: 46-362

PROJECT:
 SURVEY FOR:
 CHAD B. WINDHAM
 OF LOTS 13 & 14, BLOCK 160,
 RESERVE ADDITION,
 PENDLETON, OREGON.
 LOCATED IN THE NE 1/4, SECTION
 11, T2N., R32E., N1M., UMATILLA
 COUNTY, OREGON.