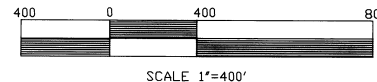


LEGEND

- FOUND 2 1/2" GLD BRASS CAP
- ⊙ FOUND 2" AL CAP ON 5/8" REBAR STAMPED PLS 933
- ⊗ SET 2 1/2" AL CAP ON 30" AL PIPE STAMPED AS NOTED
- SET 5/8"X24" REBAR WITH 2" AL CAP STAMPED OR LS 852 AND WALS 13922
- US Forest Service Property Line
- Private Property Line
- Private and Forest line in common
- (S89°54'30"E) RECORD BEARING
- (1530.00) RECORD DISTANCE
- S89°58'13"E SURVEYED BEARING
- 1320.00 SURVEYED DISTANCE

T4N, R38E, SEC30, W.M.
UMATILLA COUNTY, OREGON



PRIVATE

PRIVATE

USFS

USFS

PRIVATE

PRIVATE

ROUSE

RECORD SURVEYS

- (1) GLO 1884
- (2) GLO 1939
- (3) WELLS 93-64-C
- (4) KRUMBEIN S-155-B

NARRATIVE:

This survey was performed at the request of Mr. Dave Rouse and the Umatilla National Forest under contract number 95-14-14-17.

Coordinates for the area were determined from measurements from the TRI station McIntyre to the north. Survey adjustments were calculated using the method of least squares. All lines were posted to Forest Service Specifications.

The line on the west side of the Rouse Tract was determined by the turning the record angle from the line between the south 1/4 corner of section 30 and the corner to sections 25, 30, 36, and 31. Three pins stamped PLS 933 and recorded in Umatilla County survey S-155-E were found on line and verify the location of this line.

**REGISTERED
PROFESSIONAL
LAND SURVEYOR**

David L. Haddock
**OREGON
JULY 12, 1988
DAVID L. HADDOCK
852**

RENEWS 6-30-97

RECEIVED BY
Umatilla County Clerk
6-95
David L. Haddock
No. 95-105-B

Basis of Bearings

Bearings were determined by first determining the Oregon State Plane Coordinate (NAD83) for all the corners. Grid bearings and distances were determined from these coordinates. The bearings were rotated 1°40'56" clockwise to give the bearings shown on this plat. The grid distances were multiplied by 1.0002755464 to give the distances shown on this plat.

DAVID L. HADDOCK, Surveyor and Engineer
P.O. Box 1574 (503) 276-2174
Pendleton, OR. 97801

David L. Haddock
I hereby certify that this map is an accurate representation of a survey made under my direct supervision during June of 1995.

ROUSE SURVEY

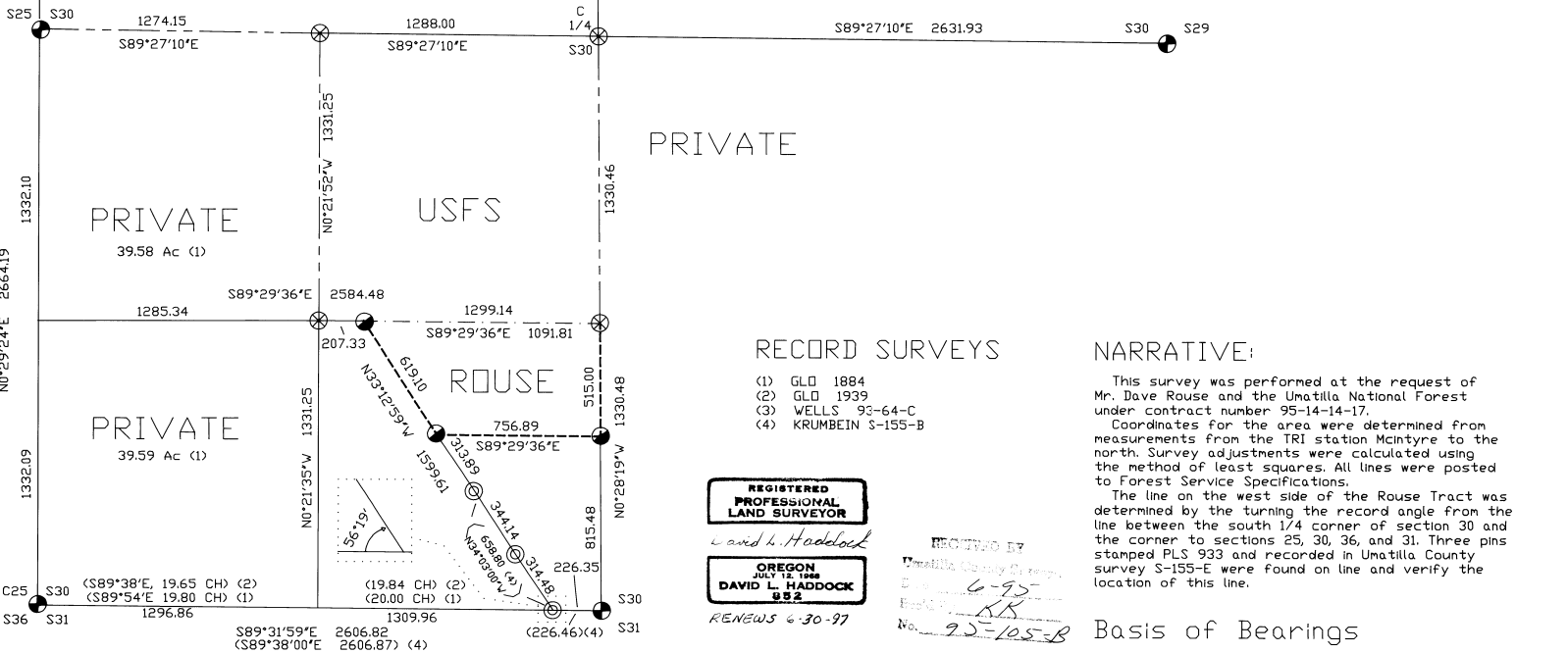
Survey for
**Dave and Bev Rouse
RT 1 Box 76
Weston, OR. 97886**

**Umatilla National Forest
2517 S.W. Hailey Avenue
Pendleton, OR. 97801**

SURVEY EQUIPMENT

WILD SYSTEM 200 GPS
GEODIMETER SYSTEM 600
ELECTRONIC TOTAL STATION

(NORTH 40.00 CH) (1)
(N0°20'E, 40.40 CH) (2)
(N0°26'55"E, 2664.02) (3)
(N0°29'24"E 2664.19



S89°31'59"E 2606.82
S89°38'00"E 2606.87 (4)