

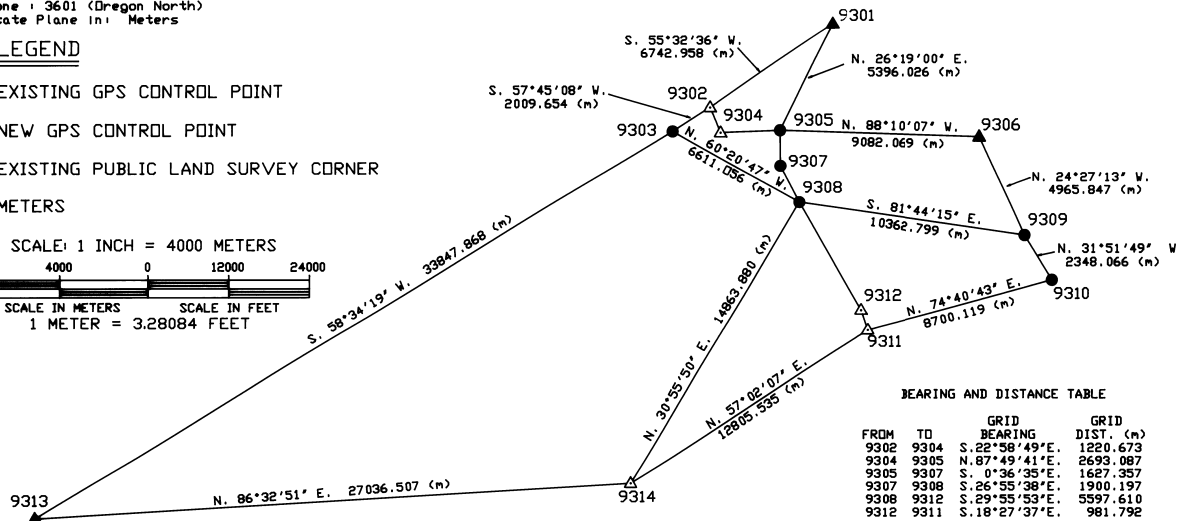
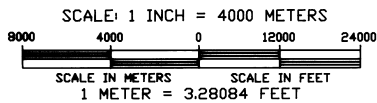
**NORTH FORK JOHN DAY GPS CONTROL SURVEY
FOR
UMATILLA NATIONAL FOREST
LOCATED IN
TOWNSHIP 6 SOUTH, RANGES 34 & 35 EAST,
TOWNSHIP 7 SOUTH, RANGES 34 & 35 EAST,
AND
TOWNSHIP 8 SOUTH, RANGES 31 & 33 EAST,
WILLAMETTE MERIDIAN
GRANT & UMATILLA COUNTIES
OREGON
SEPTEMBER THROUGH OCTOBER 1993**



Datum: NAD83(1991)
Zone: 3601 (Oregon North)
State Plane in: Meters

LEGEND

- ▲ EXISTING GPS CONTROL POINT
 - △ NEW GPS CONTROL POINT
 - EXISTING PUBLIC LAND SURVEY CORNER
- (m) METERS



BEARING AND DISTANCE TABLE

FROM	TO	GRID BEARING	GRID DIST. (m)
9302	9304	S. 22°58'49" E.	1220.673
9304	9305	N. 87°49'41" E.	2693.087
9305	9307	S. 0°36'35" E.	1627.357
9307	9308	S. 26°55'38" E.	1900.197
9308	9312	S. 29°55'53" E.	5597.610
9312	9311	S. 18°27'37" E.	981.792

No.	Latitude	Longitude	Northing (m)	Easting (m)	Ellipsoid Height (m)	Geoid Separation (m)	Orthometric Height (m)	Convergence	Scale factor
9301	45°03'16.20048" N	118°33'49.63525" W	156045.070	2652489.051	2053.272	-17.048	2070.320	1°22'23.285"	0.999896562
9302	45°01'16.87511" N	118°38'07.71542" W	152230.033	2646929.107	1519.044	-17.101	1536.145	1°19'20.258"	0.999897876
9303	45°00'43.40740" N	118°39'26.45244" W	151157.715	2645229.447	1477.475	-17.145	1494.620	1°18'24.419"	0.999898305
9304	45°00'40.12007" N	118°37'47.13990" W	151106.234	2647405.677	1583.194	-17.070	1600.264	1°19'34.850"	0.999898348
9305	45°00'41.38918" N	118°35'44.15486" W	151208.297	2650096.829	1562.488	-16.987	1579.475	1°21'02.069"	0.999898331
9306	45°00'24.84734" N	118°28'50.03195" W	150918.030	2659174.258	1578.716	-16.822	1595.538	1°25'55.759"	0.999898354
9307	44°59'48.67175" N	118°35'45.11579" W	149581.032	2650114.143	1644.567	-16.965	1661.532	1°21'01.388"	0.999898062
9308	44°58'53.14136" N	118°35'07.66825" W	147886.850	2650974.663	1509.520	-16.929	1526.449	1°21'27.945"	0.999898991
9309	44°57'56.77037" N	118°27'21.40698" W	146397.634	2661229.898	1640.144	-16.711	1656.855	1°26'58.611"	0.999900827
9310	44°56'51.16375" N	118°26'27.17792" W	144403.407	2662469.443	1627.282	-16.673	1643.955	1°27'37.070"	0.999901998
9311	44°55'43.45733" N	118°32'52.40125" W	142104.552	2654078.535	1775.886	-16.849	1792.735	1°23'03.874"	0.999903312
9312	44°56'13.86254" N	118°33'05.55102" W	143035.824	2653767.653	1754.136	-16.854	1770.990	1°22'54.549"	0.999902709
9313	44°51'30.93241" N	119°01'40.04719" W	133508.544	2616347.187	932.787	-18.008	950.795	1°02'38.652"	0.999909155
9314	44°52'05.89115" N	118°41'09.40008" W	135136.763	2643334.622	1854.461	-17.006	1871.467	1°17'11.410"	0.999908258

NARRATIVE

THE PURPOSE OF THIS SURVEY WAS TO PROVIDE HORIZONTAL CONTROL FOR PORTIONS OF THE NORTH FORK JOHN DAY WILDERNESS AND EXISTING PUBLIC LAND SURVEY CORNERS.

THIS SURVEY WAS CONDUCTED USING FEDERAL GEODETIC CONTROL COMMITTEE (FGCC) ORDER C, SECOND ORDER, CLASS 1, GPS SURVEY SPECIFICATIONS. ALL HORIZONTAL CONTROL MEETS OR EXCEEDS THESE SPECIFICATIONS. ALL COORDINATES PROVIDED ARE NAD83(1991) VALUES BASED ON THE OREGON HIGH PRECISION GPS CONTROL NETWORK.

THE SURVEY WAS CONDUCTED USING TWO TRIMBLE 4000ST AND ONE TRIMBLE 4000SE, SINGLE FREQUENCY, GLOBAL POSITIONING RECEIVERS, NIKON TRIBRACHS AND STANDARD SURVEY TRIPODS. THE ANTENNA HEIGHT MEASUREMENTS WERE MADE USING THE INTERNAL MEASURING TAPES OF THE RECEIVERS AND WERE RECORDED IN METERS.

STATIC SURVEY, CARRIER PHASE MEASUREMENTS AND DATA PROCESSING WAS USED ON ALL BASELINE MEASUREMENTS. ALL BASELINES FOR EACH SESSION WERE PROCESSED, ALTHOUGH ONLY THE INDEPENDENT (N-1) BASELINES WERE USED IN THE NETWORK. BASELINES WERE EVALUATED BY EXAMINATION OF THE STATISTICAL QUALITY INDICATORS AND LOOP CLOSURE ANALYSIS. ALL INDEPENDENT BASELINES WERE THEN ADJUSTED IN A LEAST SQUARES ADJUSTMENT PROGRAM IN TWO PHASES. THE FIRST PHASE WAS A MINIMALLY CONSTRAINED ADJUSTMENT USING THE CENTER OF THE SURVEY AREA. THE SECOND PHASE BEING A CONSTRAINED ADJUSTMENT USING THE THREE EXISTING GPS CONTROL POINTS (9301, 9306 AND 9313) AS FIXED POINTS BOTH HORIZONTALLY (LATITUDE & LONGITUDE) AND VERTICALLY (ELLIPSOID HEIGHT). THE COORDINATES OF THESE POINTS WERE ESTABLISHED BY DAVID EVANS AND ASSOCIATES UNDER CONTRACT TO THE USDA-FOREST SERVICE.

COMPUTER SOFTWARE USED IN THIS SURVEY CONSISTED OF TRIMBLE NAVIGATION'S TRIMVEC (REV. E) PROGRAM WHICH WAS USED FOR DOWNLOAD AND BASELINE PROCESSING, TRIMNET (VERSION 91.060) PROGRAM WHICH WAS USED FOR NETWORK ADJUSTMENTS. THE NATIONAL GEODETIC SURVEY'S GEDD93 PROGRAM WAS USED TO INTERPOLATE THE GEDD SEPARATION FOR EACH STATION IN ORDER TO DETERMINE ORTHOMETRIC HEIGHTS.

MEASUREMENTS SHOWN ON SHEET 2 FROM THE MONUMENTS TO THEIR REFERENCES ARE TRUE GEODETIC BEARINGS (MAGNETIC DECLINATION 20° EAST) AND ACTUAL GROUND DISTANCES IN FEET. ALL MEASUREMENTS SHOWN ON SHEET 1 ARE BASED ON NAD83(1991), OREGON NORTH ZONE STATE PLANE COORDINATES IN METERS.

I, DAVID A. SCHLAICH, A REGISTERED LAND SURVEYOR IN THE STATE OF OREGON HEREBY CERTIFY THAT THIS PLAT AND THE NOTES HEREON ARE A TRUE AND CORRECT REPRESENTATION OF A GPS CONTROL SURVEY I CONDUCTED FROM SEPTEMBER THROUGH OCTOBER OF 1993, AT THE REQUEST OF THE UMATILLA NATIONAL FOREST, IN ACCORDANCE WITH THE STATUTES OF THE STATE OF OREGON.

David A. Schlaich
DAVID A. SCHLAICH -- RLS 2308
UMATILLA NATIONAL FOREST
257 S.W. HAILLEY AVENUE
PENDLETON, OREGON 97001
PHONE (503) 278-3747

REGISTERED
PROFESSIONAL
LAND SURVEYOR
David A. Schlaich
JULY 18, 1987
DAVID A. SCHLAICH
2308
EXPIRES 12/31/94

RECEIVED BY
Donna R. Day 1-26-94
DATE
I CERTIFY THAT THIS SURVEY WAS PERFORMED AT THE REQUEST OF THE UMATILLA NATIONAL FOREST SUPERVISOR
Walter J. Mapp 1-26-94
DATE

RECEIVED BY
Walter J. Mapp
DATE
No. 74507-B

NORTH FORK JOHN DAY GPS CONTROL SURVEY
FOR
UMATILLA NATIONAL FOREST
LOCATED IN
TOWNSHIP 6 SOUTH, RANGES 34 & 35 EAST,
TOWNSHIP 7 SOUTH, RANGES 34 & 35 EAST,
AND
TOWNSHIP 8 SOUTH, RANGES 31 & 33 EAST,
WILLAMETTE MERIDIAN
GRANT & UMATILLA COUNTIES
OREGON
SEPTEMBER THROUGH OCTOBER 1993

CORNER INFORMATION

9301
 JANIS 1989 (T. 6 S., R. 34 E., SECTION 13)

FOUND A 3 1/4 INCH ALUMINUM CAP ON A 3/4 INCH ALUMINUM ROD, PROJECTING 1/2 INCH OUT OF A ROCK OUTCROP, MARKED AS SHOWN.



9302
 WINDM CREEK 1993 (T. 6 S., R. 34 E., SECTION 28)

SET A 3 1/4 INCH ALUMINUM CAP, ON A 5/8 BY 36 INCH REBAR, FLUSH WITH THE GROUND, MARKED AS SHOWN, FROM WHICH;
 A METAL FENCE POST WITH LSM (LAND SURVEY MONUMENT) SIGN BEARS, WEST, 4.0 FEET.



9303
 CORNER OF SECTIONS 29, 30, 31 & 32, T. 6 S., R. 34 E.

FOUND A 2 1/2 INCH ALUMINUM CAP, ON A 2 1/2 INCH ALUMINUM PIPE, PROJECTING 1 INCH OUT OF THE GROUND, MARKED AS SHOWN, FROM WHICH;



9' LODGEPOLE PINE BEARS, N.20 1/2°E., 83.7 FEET, SCRIBING *T6S R34E S29*BT* VISIBLE ON DOUBLE BLAZE, WITH 3/4" DIAMETER BRASS WASHER STAMPED *PLS 1636* NAILED TO LOWER BLAZE BY THE *BT* SCRIBING.
 A DOWN & DECAYED LODGEPOLE PINE'S ROOT HOLE BEARS, N.24°E., 68.6 FEET, WITH SCRIBING VISIBLE (ORIGINAL BT).
 7' LODGEPOLE PINE BEARS, S.31°E., 43.1 FEET, SCRIBING *T6S R34E S32*BT* VISIBLE ON DOUBLE BLAZE, WITH 3/4" DIAMETER BRASS WASHER STAMPED *PLS 1636* NAILED TO LOWER BLAZE BY THE *BT* SCRIBING.
 8' LODGEPOLE PINE BEARS, S.84 1/2°W., 58.4 FEET, SCRIBING *T6S R34E S31*BT* VISIBLE ON DOUBLE BLAZE, WITH 3/4" DIAMETER BRASS WASHER STAMPED *PLS 1636* NAILED TO LOWER BLAZE BY THE *BT* SCRIBING.
 8' LODGEPOLE PINE BEARS, N.44°W., 76.3 FEET, SCRIBING *T6S R34E S30*BT* VISIBLE ON DOUBLE BLAZE, WITH 3/4" DIAMETER BRASS WASHER STAMPED *PLS 1636* NAILED TO LOWER BLAZE BY THE *BT* SCRIBING.
 A DOWN & DECAYED LODGEPOLE PINE'S ROOT HOLE BEARS, N.22 3/4°E., 49.5 FEET (ORIGINAL BT).

9304
 WINDM CREEK NO.2 1993 (T. 6 S., R. 34 E., SECTION 33)

SET A 3 1/4 INCH ALUMINUM CAP, ON A 5/8 BY 36 INCH REBAR, FLUSH WITH THE GROUND, MARKED AS SHOWN, FROM WHICH;
 A METAL FENCE POST WITH LSM SIGN BEARS, SOUTH, 4.0 FEET.



9305
 CORNER OF SECTIONS 26, 27, 34 & 35, T. 6 S., R. 34 E.

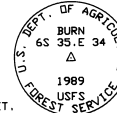
FOUND A 2 1/2 INCH ALUMINUM CAP, ON A 2 1/2 INCH ALUMINUM PIPE, PROJECTING 4 INCHES OUT OF THE GROUND IN A SMALL RING OF STONE, MARKED AS SHOWN, FROM WHICH;



7' DOWNED LODGEPOLE PINE'S ROOT HOLE BEARS, N.34°E., 9.9 FEET, SCRIBING *T6S R34E S26 BT* VISIBLE (ORIGINAL BT).
 10' WESTERN LARCH BEARS, N.85 1/2°E., 44.8 FEET, SCRIBING *T6S R34E S26**BT* VISIBLE ON DOUBLE BLAZE, WITH 3/4" DIAMETER BRASS WASHER STAMPED *PLS 1636* NAILED TO LOWER BLAZE BY THE *BT* SCRIBING.
 A DOWN AND DECAYED LODGEPOLE PINE'S ROOT HOLE BEARS, S.44°E., 23.8 FEET, SCRIBING VISIBLE (ORIGINAL BT).
 13' WESTERN LARCH BEARS, S.74°E., 25.5 FEET, SCRIBING *T6S R34E S35**BT* VISIBLE ON DOUBLE BLAZE, WITH 3/4" DIAMETER BRASS WASHER STAMPED *PLS 1636* NAILED TO LOWER BLAZE BY THE *BT* SCRIBING.
 7' DOWNED LODGEPOLE PINE'S ROOT HOLE BEARS, S.58°W., 17.8 FEET, SCRIBING *T6S R34E S34 BT* VISIBLE (ORIGINAL BT).
 16' WESTERN LARCH BEARS, S.43 1/4°W., 60.1 FEET, SCRIBING *T6S R34E S34**BT* VISIBLE ON DOUBLE BLAZE, WITH 3/4" DIAMETER BRASS WASHER STAMPED *PLS 1636* NAILED TO LOWER BLAZE BY THE *BT* SCRIBING.
 8' LODGEPOLE PINE SNAG BEARS, N.69°W., 17.2 FEET, SCRIBING *T6S R34E S27 BT* VISIBLE.
 11' WESTERN LARCH BEARS, N.18 1/2°W., 28.1 FEET, SCRIBING *T6S R34E S27**BT* VISIBLE ON DOUBLE BLAZE, WITH 3/4" DIAMETER BRASS WASHER STAMPED *PLS 1636* NAILED TO LOWER BLAZE BY THE *BT* SCRIBING.

9306
 BURN 1989 (T. 6 S., R. 35 E., SECTION 34)

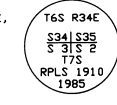
FOUND A 3 1/4 INCH ALUMINUM CAP, ON A 3/4 INCH ALUMINUM ROD, PROJECTING 4 INCHES OUT OF THE GROUND, MARKED AS SHOWN, FROM WHICH;



A METAL FENCE POST WITH ATTENTION SIGN BEARS, N.24°E., 3.4 FEET.

9307
 CORNER OF SECTIONS 2, 3, 34 & 35, T. 6 & 7 S., R. 34 E.

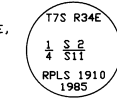
FOUND A 2 1/2 INCH ALUMINUM CAP, ON A 2 1/2 INCH ALUMINUM PIPE, PROJECTING 24 INCHES OUT OF THE GROUND, SET IN A STONE MOUND 3 1/2 FEET IN DIAMETER BY 19 INCHES HIGH, MARKED AS SHOWN, FROM WHICH;



8' PONDEROSA PINE BEARS N.33°E., 17.1 FEET, SCRIBING *T6S R34E S35 BT* VISIBLE ON PARTIALLY HEALED BLAZE, WITH A 3/4 INCH DIAMETER BRASS WASHER MARKED *RPLS 1910* NAILED TO THE BLAZE BY THE *BT* SCRIBING.
 A STONE MOUND, 2 1/2 FEET IN DIAMETER BY 16 INCHES HIGH, BEARS N.80 1/4°E., 71.5 FEET
 29' PONDEROSA PINE SNAG BEARS N.83 1/2°E., 107.3 FEET, SCRIBING *T6S R34E S2 BT* VISIBLE ON PARTIALLY HEALED DOUBLE BLAZE (ORIGINAL BT).
 10' DOUGLAS FIR BEARS S.89°E., 73.7 FEET, SCRIBING *T6S R34E S2 BT* VISIBLE ON PARTIALLY HEALED BLAZE, WITH A 3/4 INCH DIAMETER BRASS WASHER MARKED *RPLS 1910* NAILED TO THE BLAZE BY THE *BT* SCRIBING.
 98' PONDEROSA PINE BEARS S.63°W., 103.6 FEET, SCRIBING *4E S3* VISIBLE ON PARTIALLY CUT OPENED BLAZE (ORIGINAL BT).
 24' DOWNED PONDEROSA PINE SNAG BEARS N.65°W., 124.7 FEET, DOUBLE BLAZED WITH SCRIBING *T6S R34E S34* VISIBLE ON UPPER BLAZE (ORIGINAL BT).
 11' DOUGLAS FIR BEARS N.49°W., 65.7 FEET, SCRIBING *T6S R34E S34 BT* VISIBLE ON PARTIALLY HEALED BLAZE, WITH A 3/4 INCH DIAMETER BRASS WASHER MARKED *RPLS 1910* NAILED TO THE BLAZE BY THE *BT* SCRIBING.

9308
 1/4 CORNER OF SECTIONS 2 & 11, T. 7 S., R. 34 E.

FOUND A 2 1/2 INCH ALUMINUM CAP, ON A 2 1/2 INCH ALUMINUM PIPE, PROJECTING 6 INCHES OUT OF THE GROUND, MARKED AS SHOWN, FROM WHICH;



12' LODGEPOLE PINE BEARS N.80°E., 22.9 FEET, SCRIBING *1/4 S2**BT* VISIBLE ON PARTIALLY HEALED DOUBLE BLAZE, WITH A 3/4 INCH DIAMETER BRASS WASHER MARKED *RPLS 1910* NAILED TO THE LOWER BLAZE BY THE *BT* SCRIBING.
 8' LODGEPOLE PINE BEARS S.1°E., 44.7 FEET, SCRIBED WITH AN *X* ON BLAZE 4 1/2 FEET ABOVE GROUND AND *BT* ON LOWER BLAZE, WITH A 3/4 INCH DIAMETER BRASS WASHER MARKED *RPLS 1910* NAILED TO THE LOWER BLAZE BY THE *BT* SCRIBING.

9309
 CORNER OF SECTIONS 11, 12, 13 & 14, T. 7 S., R. 35 E.

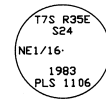
FOUND A 2 1/2 INCH ALUMINUM CAP, ON A 2 1/2 INCH ALUMINUM PIPE, PROJECTING 1 INCH OUT OF THE GROUND, SET IN A RING OF STONE 2 FEET IN DIAMETER, MARKED AS SHOWN, FROM WHICH;



13' LODGEPOLE PINE BEARS, N.53 1/2°E., 124.6 FEET, SCRIBED *T7S R35E S12 BT* ON SINGLE BLAZE (RECORD N.55°E.).
 13' DOWNED LODGEPOLE PINE SNAG, BEARS S.88°E., 13.2 FEET, SCRIBING VISIBLE ON CHOPPED OPEN BLAZE (ORIGINAL BT).
 18' LODGEPOLE PINE BEARS, N.80 1/2°W., 83.3 FEET, SCRIBED *T7S R35E S11 BT* ON SINGLE BLAZE (RECORD 83.7 FEET).
 10' LODGEPOLE PINE SNAG BEARS, N.31 3/4°W., 12.9 FEET, SCRIBING *T7S R35E S11 BT* ON PARTIALLY HEALED BLAZE (RECORD N.30°W., 12.5 FEET) (ORIGINAL BT).
 A 1 1/2 INCH ALUMINUM CAP, ON A 5/8 INCH REBAR, SET FLUSH WITH THE GROUND, MARKED *S13 12.00 FT 1106* BEARS, S.20°22'E., 12.04 FEET (RECORD S.17 1/2°E., 12.00 FEET).
 A 1 1/2 INCH ALUMINUM CAP, ON A 5/8 INCH REBAR, PROJECTING 1 INCH OUT OF THE GROUND, MARKED *S14 12.00 FT 1106* BEARS, S.42°45'W., 12.04 FEET (RECORD S.46°W., 12.00 FEET).

9310
 NE 1/16 CORNER OF SECTION 24, T. 7 S., R. 35 E.

FOUND A 2 1/2 INCH ALUMINUM CAP, ON A 2 1/2 INCH ALUMINUM PIPE, PROJECTING 4 INCHES OUT OF THE GROUND, MARKED AS SHOWN, FROM WHICH;



A 1 1/2 INCH ALUMINUM CAP, ON A 5/8 INCH REBAR, PROJECTING 2 INCHES OUT OF THE GROUND, MARKED *S24 12.00 FT 1106*, BEARS N.42°E., 12.0 FEET.
 A 5/8 INCH REBAR, PROJECTING 4 INCHES OUT OF THE GROUND, BEARS N.42 1/2°W., 12.0 FEET.

9311
 MOON MEADOW NO.1 1993 (T. 7 S., R. 35 E., SECTION 30)

SET A 3 1/4 INCH ALUMINUM CAP, ON A 5/8 BY 36 INCH REBAR, FLUSH WITH THE GROUND, MARKED AS SHOWN, FROM WHICH;
 A METAL FENCE POST WITH WILDERNESS BOUNDARY & LSM SIGNS BEARS, S.27°E., 3.0 FEET.



9312
 MOON MEADOW NO.2 1993 (T. 7 S., R. 35 E., SECTION 30)

SET A 3 1/4 INCH ALUMINUM CAP, ON A 5/8 BY 36 INCH REBAR, FLUSH WITH THE GROUND, MARKED AS SHOWN, FROM WHICH;
 A METAL FENCE POST WITH WILDERNESS BOUNDARY & LSM SIGNS BEARS, S.55°W., 3.2 FEET.



9313
 BENCH MARK N 11-43 (T. 8 S., R. 31 E., SECTION 19)

FOUND A 2 1/2 INCH BRASS DISK SET IN CONCRETE FLUSH WITH THE GROUND, MARKED AS SHOWN.



9314
 BULL PRAIRE 1993 (T. 8 S., R. 33 E., SECTION 13)

FOUND A 2 1/2 INCH ALUMINUM CAP, ON A 5/8 BY 36 INCH REBAR, FLUSH WITH THE GROUND, MARKED AS SHOWN, FROM WHICH;
 A METAL FENCE POST WITH LSM SIGN BEARS, EAST, 4.0 FEET.



REGISTERED PROFESSIONAL LAND SURVEYOR

David A. Schlaich
 OREGON
 JULY 16, 1987
 DAVID A. SCHLAICH
 2300
 EXPIRES 12/31/94

REMOVED BY
 Umatilla County Surveyors
 Date 2-94
 Field By KE
 No. 94-07-B